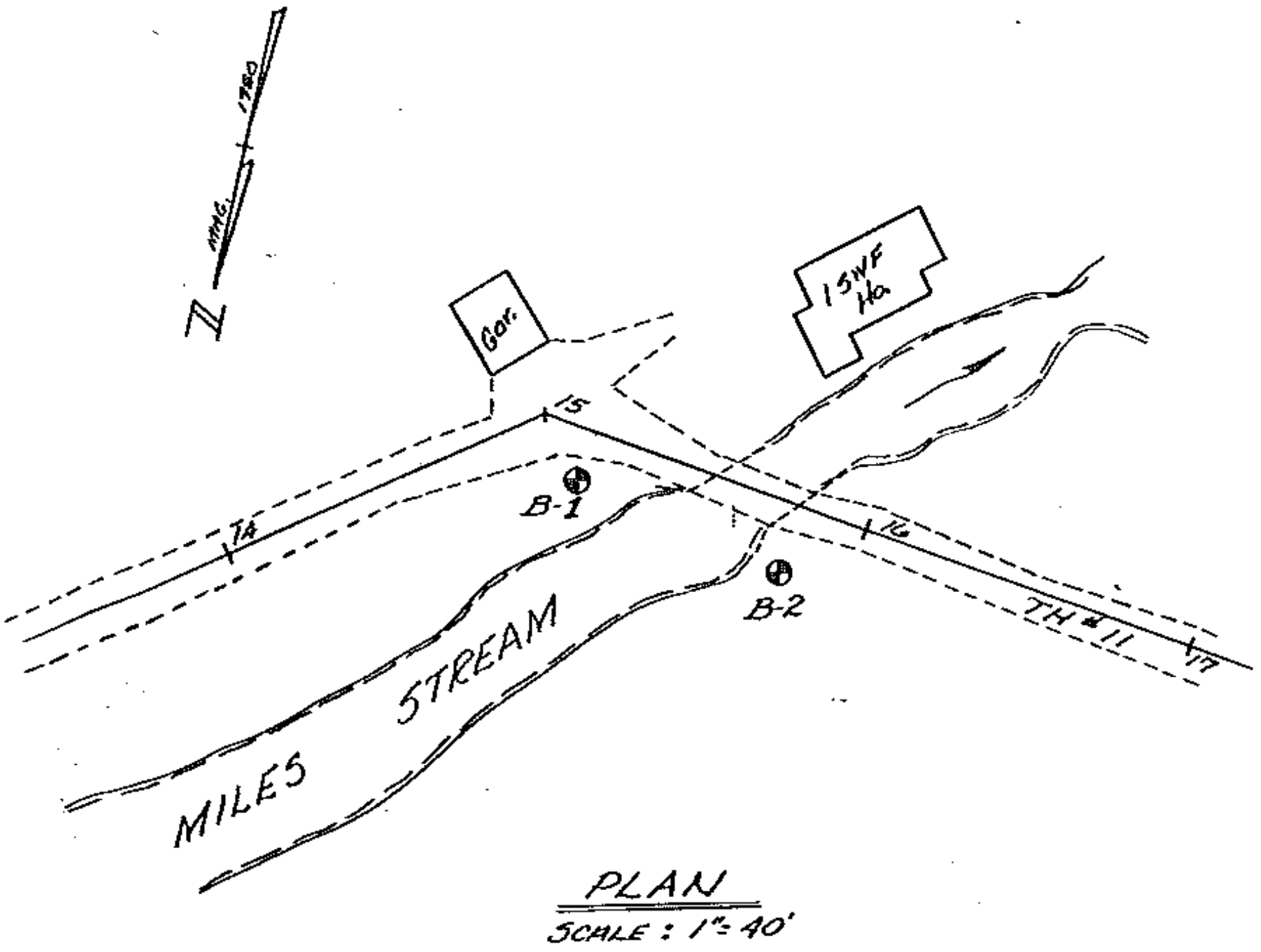


BORING No.	STATION	OFFSET	GROUND ELEV.
B-1	15+16	15' RT.	499.7
B-2	15+80	20' RT.	496.8

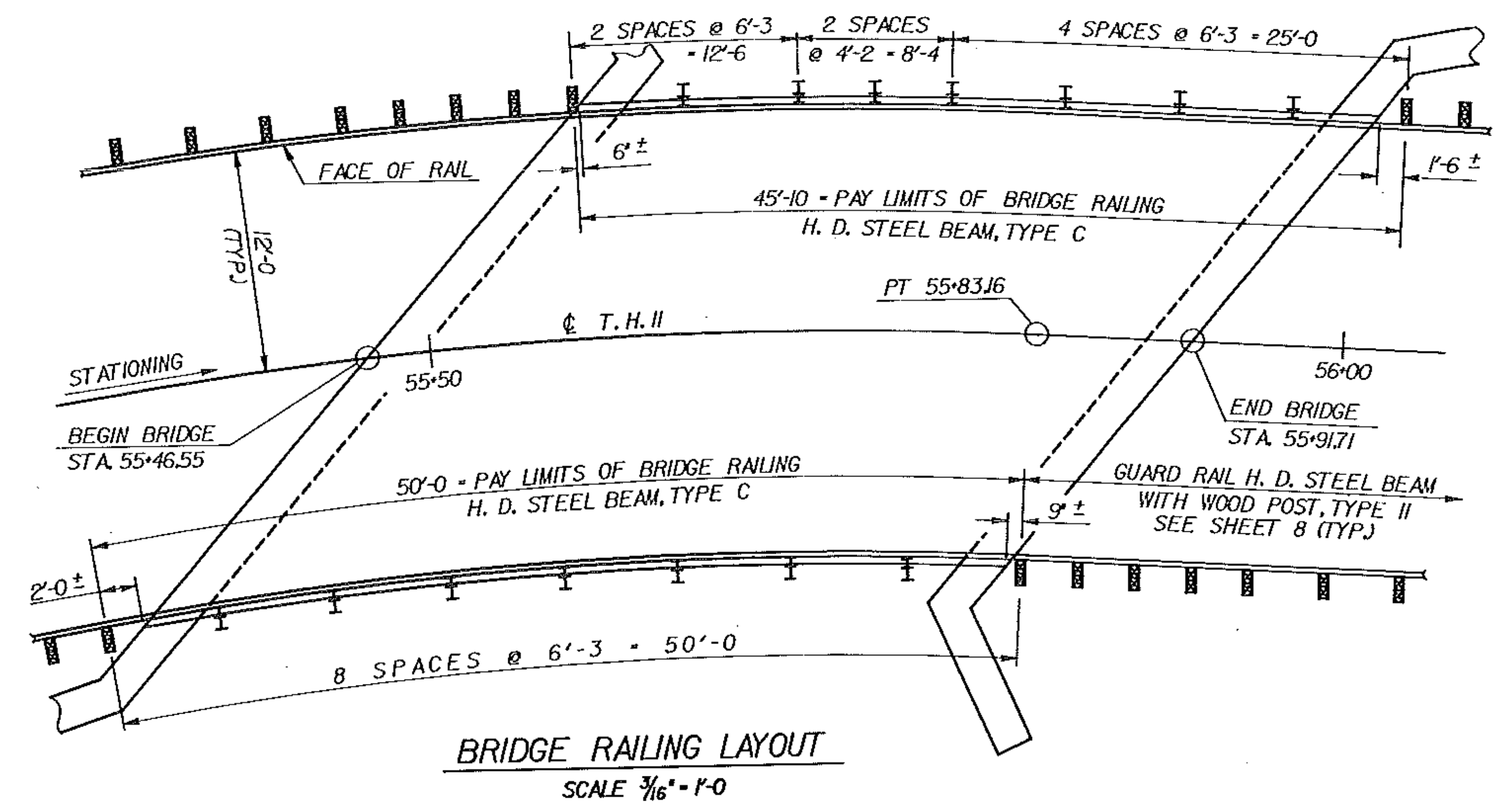
BORING NOMENCLATURE

- STANDARD PENETRATION BORINGS
- SAMPLER OUTSIDE DIAMETER 2"
- SAMPLER INSIDE DIAMETER 1 3/8"
- WEIGHT OF HAMMER 140 LBS
- HAMMER FALL 30"



GENERAL NOTES

- THE SUBSURFACE EXPLORATIONS SHOWN HEREON WERE MADE BETWEEN MAY 1982 AND MAY 1983 BY THE VERMONT AGENCY OF TRANSPORTATION.
- SOIL AND ROCK (WHERE ENCOUNTERED) CLASSIFICATION, PROPERTIES AND DESCRIPTIONS ARE BASED ON ENGINEERING INTERPRETATION OF AVAILABLE SUBSURFACE INFORMATION BY THE VERMONT AGENCY OF TRANSPORTATION AND MAY NOT NECESSARILY REFLECT ACTUAL VARIATIONS IN SUBSURFACE CONDITIONS THAT MAY BE ENCOUNTERED BETWEEN INDIVIDUAL BORING OR SAMPLE LOCATIONS.
- OBSERVED WATER LEVELS AND/OR WATER CONDITIONS INDICATED ARE AS RECORDED AT THE TIME OF EXPLORATION AND MAY VARY ACCORDING TO THE PREVAILING RAINFALL, METHODS OF EXPLORATION AND OTHER FACTORS.
- SOUND ENGINEERING JUDGEMENT WAS EXERCISED IN PREPARING THE SUBSURFACE INFORMATION PRESENTED HEREON. ANALYSIS AND INTERPRETATION OF SUBSURFACE DATA WAS PERFORMED AND INTENDED FOR AGENCY DESIGN AND ESTIMATE PURPOSES ONLY. PRESENTATION OF THE INFORMATION ON THE PLANS OR ELSEWHERE IS FOR THE PURPOSE OF PROVIDING INTERESTED USERS WITH ACCESS TO THE SAME DATA AVAILABLE TO THE AGENCY. THE SUBSURFACE INFORMATION IS PRESENTED IN GOOD FAITH AND IS NOT INTENDED AS A SUBSTITUTE FOR PERSONAL INVESTIGATION, INDEPENDENT INTERPRETATIONS, INDEPENDENT ANALYSIS OR JUDGEMENT OF THE CONTRACTOR.
- PICTORIAL STRUCTURE DETAILS SHOWN HEREON ARE FOR ILLUSTRATIVE PURPOSES ONLY AND MAY NOT BE INDICATIVE OF THE FINAL DESIGN CONDITIONS SHOWN IN THE CONTRACT PLANS.



STATE OF VERMONT	
AGENCY OF TRANSPORTATION	
TOWN OF CONCORD	Bridge No. 20
HIGHWAY NO. TH #11	Log Sta.
	Surr. Sta. 15100
BORING LOGS ~	
TOWN HIGHWAY #11 OVER MILES STREAM	
Designed by J. POTTER	Drawn by M. GARCIA
Checked by R. RANALDO date 7/83	Bridge Design Supervisor R.S. HAUPT date 7/83
PROJECT CONCORD	PROJECT NO. BRZ 1447(6)
Bridge Sheet No.	Sheet 7 of 29