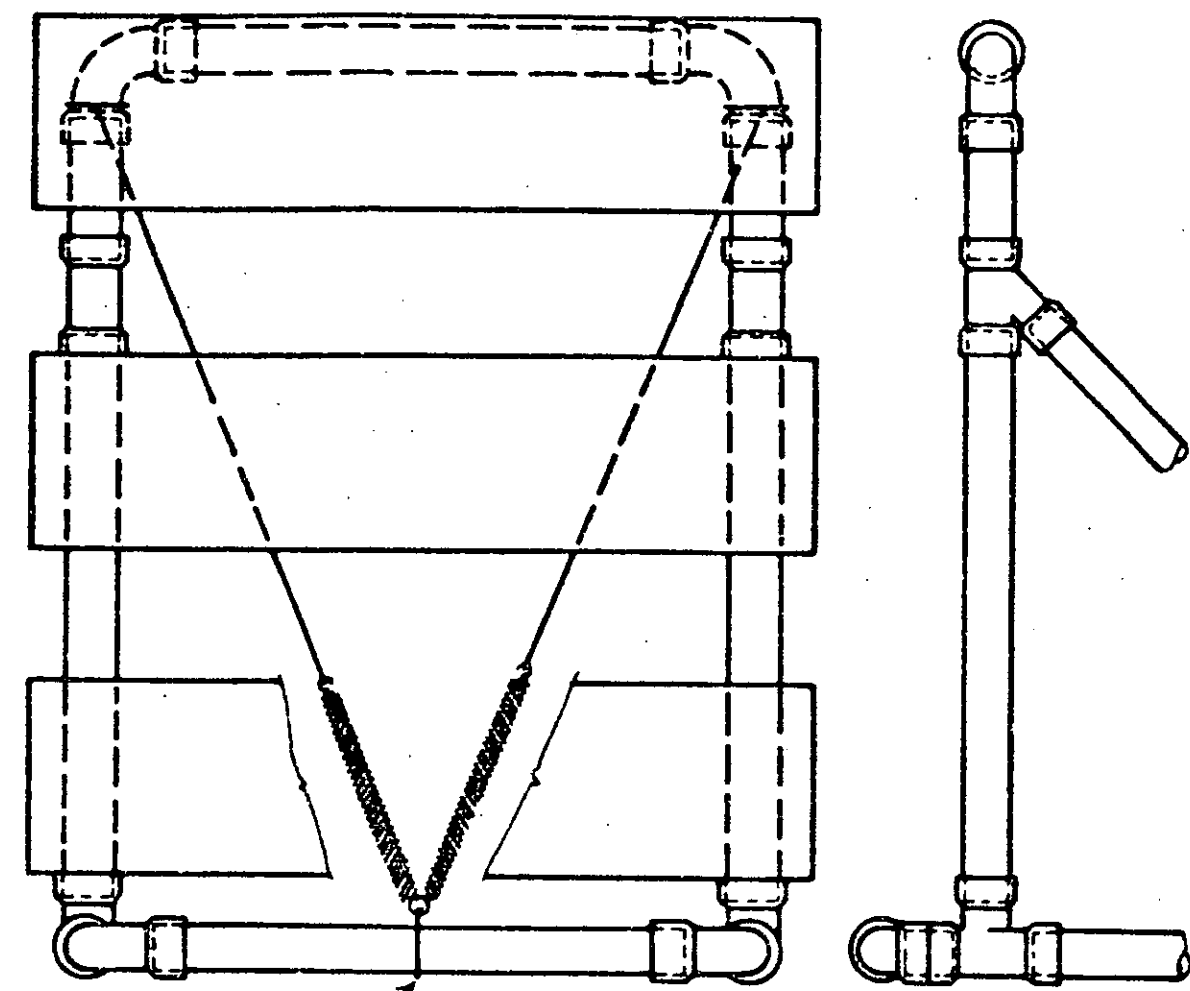
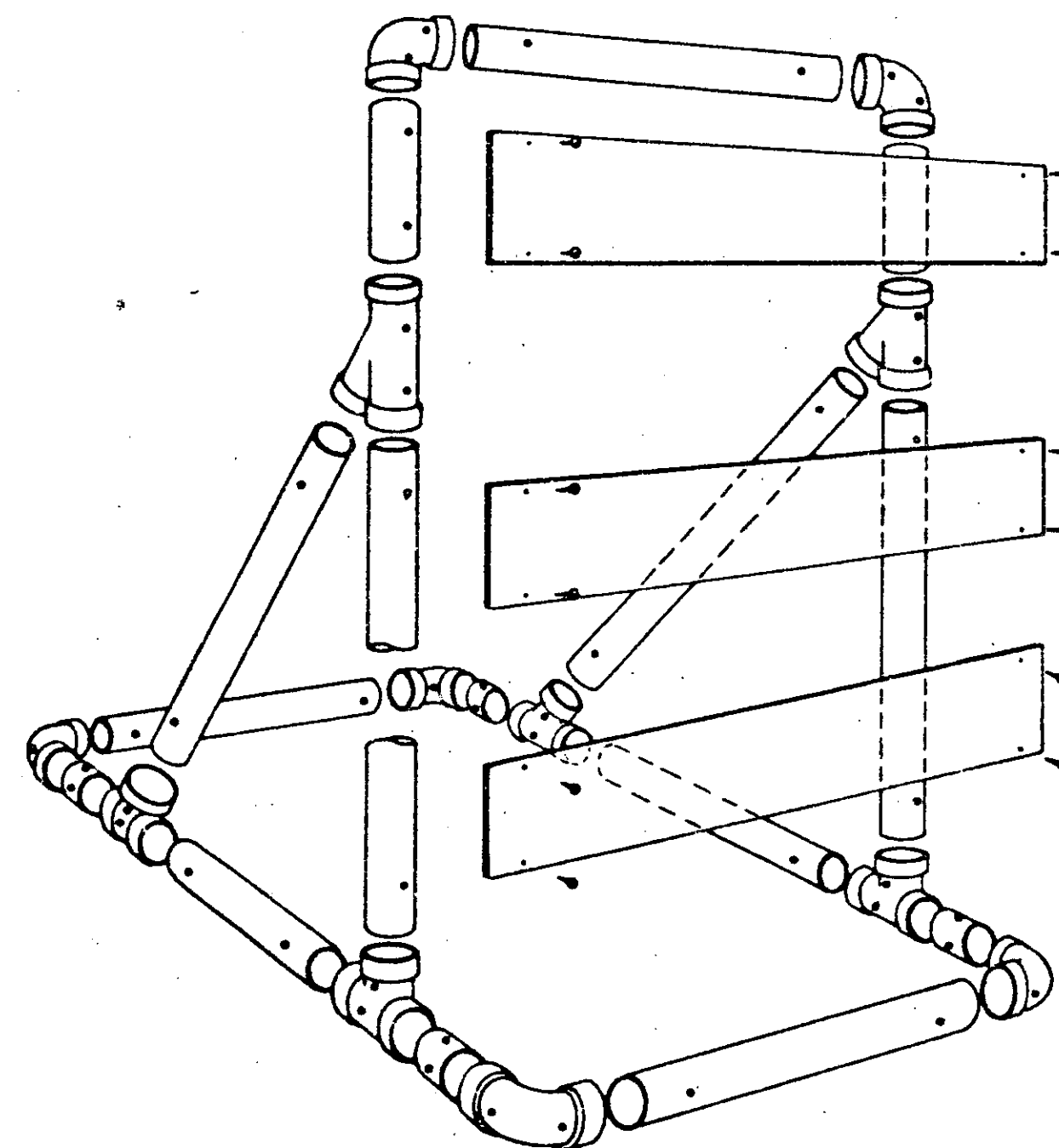


SIDE VIEW



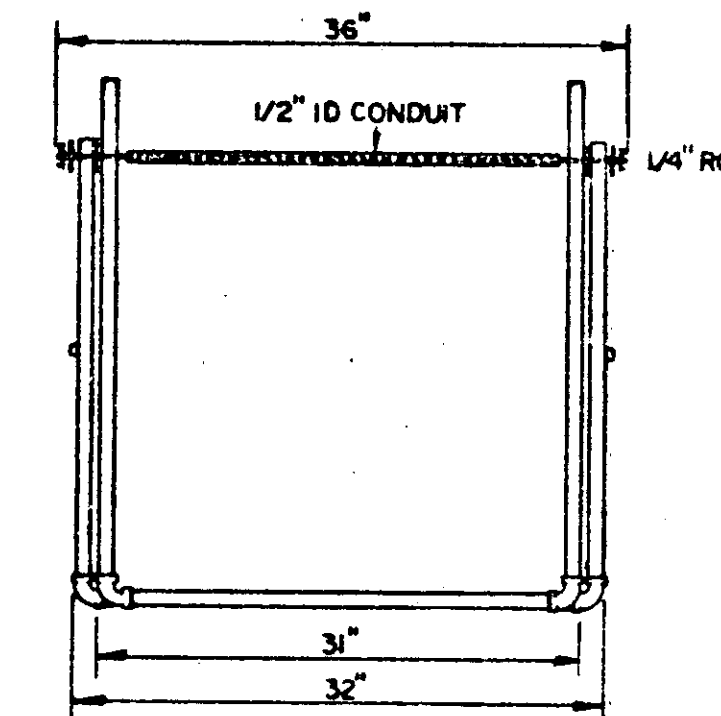
BARRICADES SHALL BE STABILIZED WITH SAND BAGS OR FLEXIBLE CONTAINERS OF SAND WHICH WILL NOT CONSTITUTE A HAZARD WHEN BARRICADE IS HIT. STABILIZERS SHALL BE SO PLACED AS NOT TO BE A HAZARD TO VEHICLES PASSING ON EITHER SIDE.
IF BARRICADE REPLACEMENT COSTS CAN BE CONSIDERED NEGLIGIBLE, GLED JOINTS MAY PROVIDE ADDITIONAL STABILITY TO THE INSTALLATION.



BARRICADE ASSEMBLY

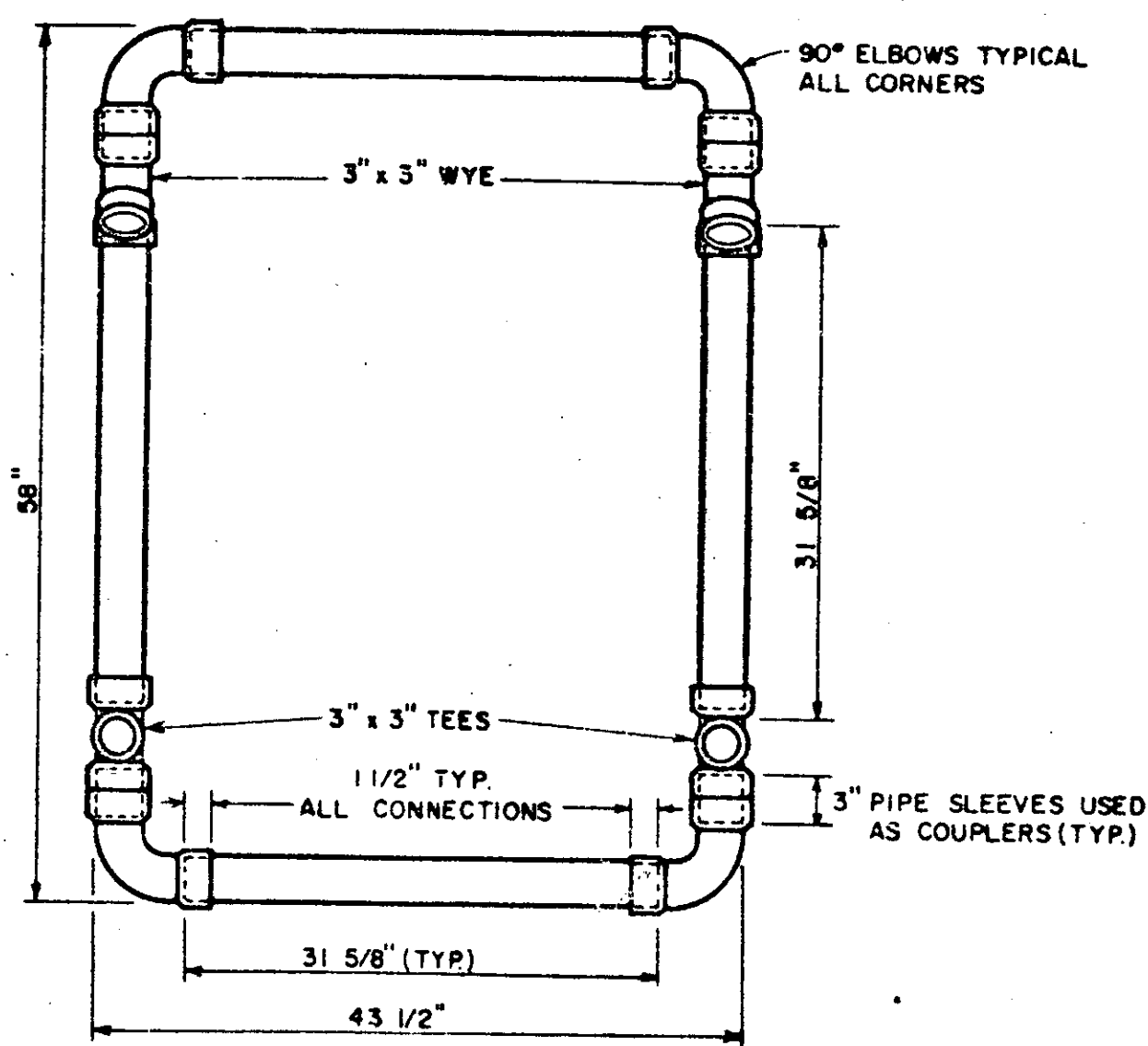
MATERIALS LIST FOR ONE BARRICADE

3" Diameter Pipe	30 LF
3" 1/4 Bend Elbow	6 EA
3" Tees	2 EA
3" Wyes	4 EA
9" x 48" x 0.25 Barricade Panels	3 EA
5/8" x 11" No. 8 Spring	2 EA
1" No. 14 Pan Head Metal Screws	12 EA
No. 14 Black Annealed Tie Wire	15 LF

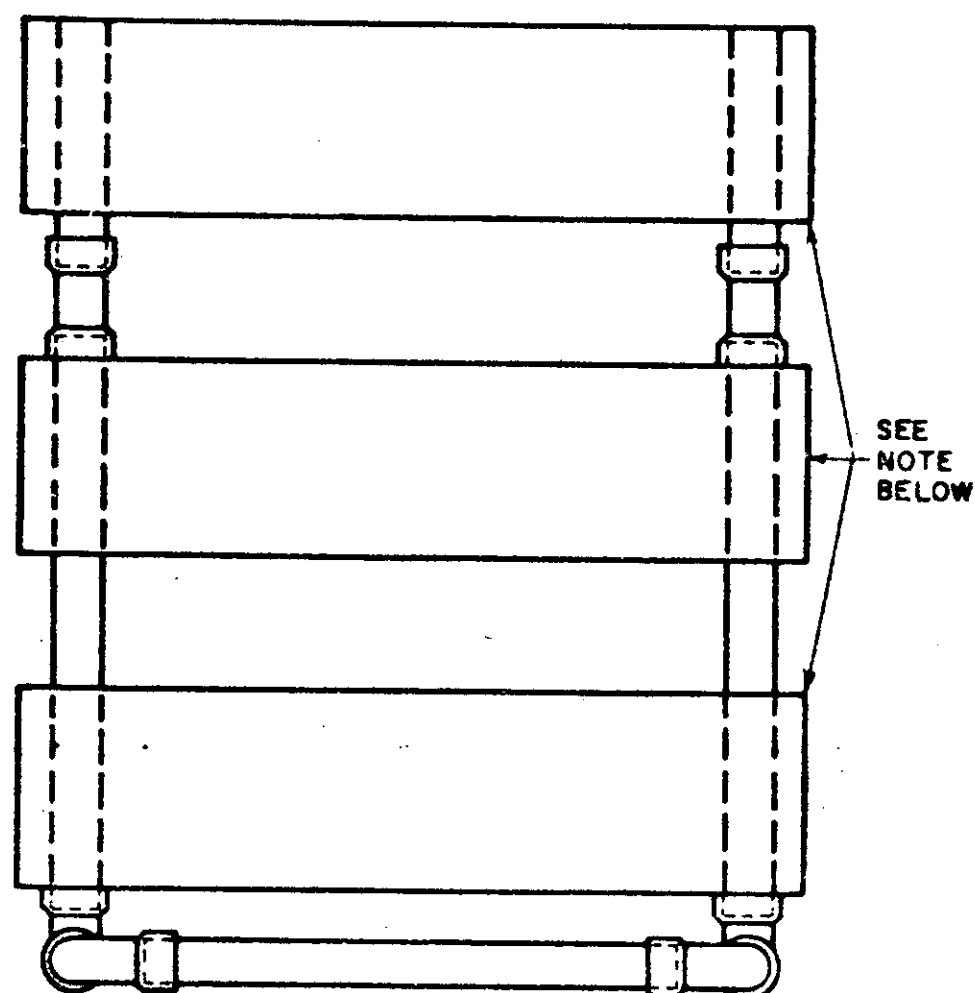


MATERIALS FOR TYPE I & II BARRICADES
20'-1" PVC
4-1" PVC 90° ELBOWS
30'-1/2" ID THINWALL CONDUIT
36'-1/4" STEEL ROD
4-1" WASHERS
24'-LIGHT DUTY CHAIN
4-METAL SCREWS
2-3/4" COTTER PINS

TYPE I BARRICADES SHALL CONSIST OF ONE HORIZONTAL PANEL.
TYPE II BARRICADES SHALL CONSIST OF AN ADDITIONAL HORIZONTAL PANEL MOUNTED BELOW THE OTHER.
SEE STD E-7 FOR USE REQUIREMENTS.

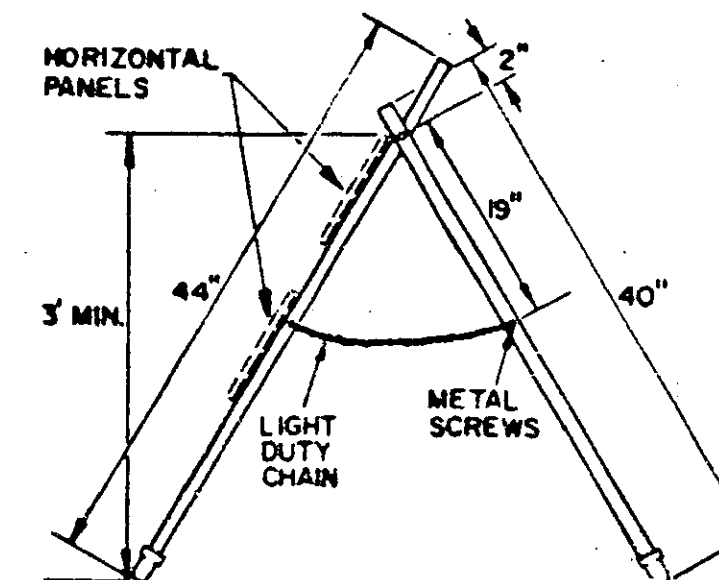


TOP VIEW OF BASE



FRONT VIEW

NOTE - 9" x 48" BARRICADE HAZARD PANELS ORANGE AND WHITE RIGHT OR LEFT. (.025 ANODIZED ALUMINUM). PANELS ATTACHED WITH 1" NO. 14 PAN HEAD METAL SCREW.



TYPE I & II BARRICADE DETAILS

REVISIONS & CORRECTIONS
JAN. 11, 1977 - REVISED ACCORDING TO FHWA REQUIREMENTS.
JUNE 8, 1977 - MATERIALS LIST ADDED.
APR. 8, 1982 - CEMENTING NOTE AND BARRICADES TYPE I & II ADDED.

APPROVED

Dec 30, 1976
DATE

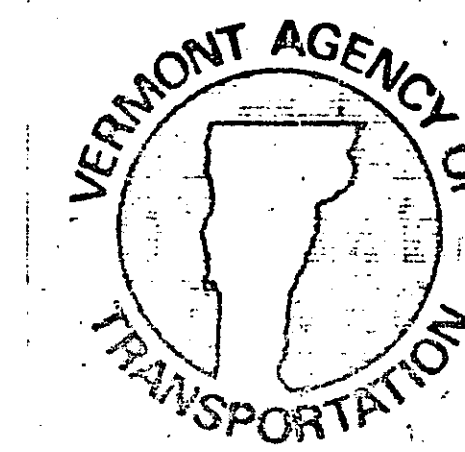
E. W. Stinchey
CHIEF ENGINEER

RO Munn
ASST. CHIEF ENGINEER

David Jones
HIGHWAY ENGINEER

TRAFFIC SIGNS

BREAKAWAY BARRICADE
DETAILS



STANDARD

E-7A