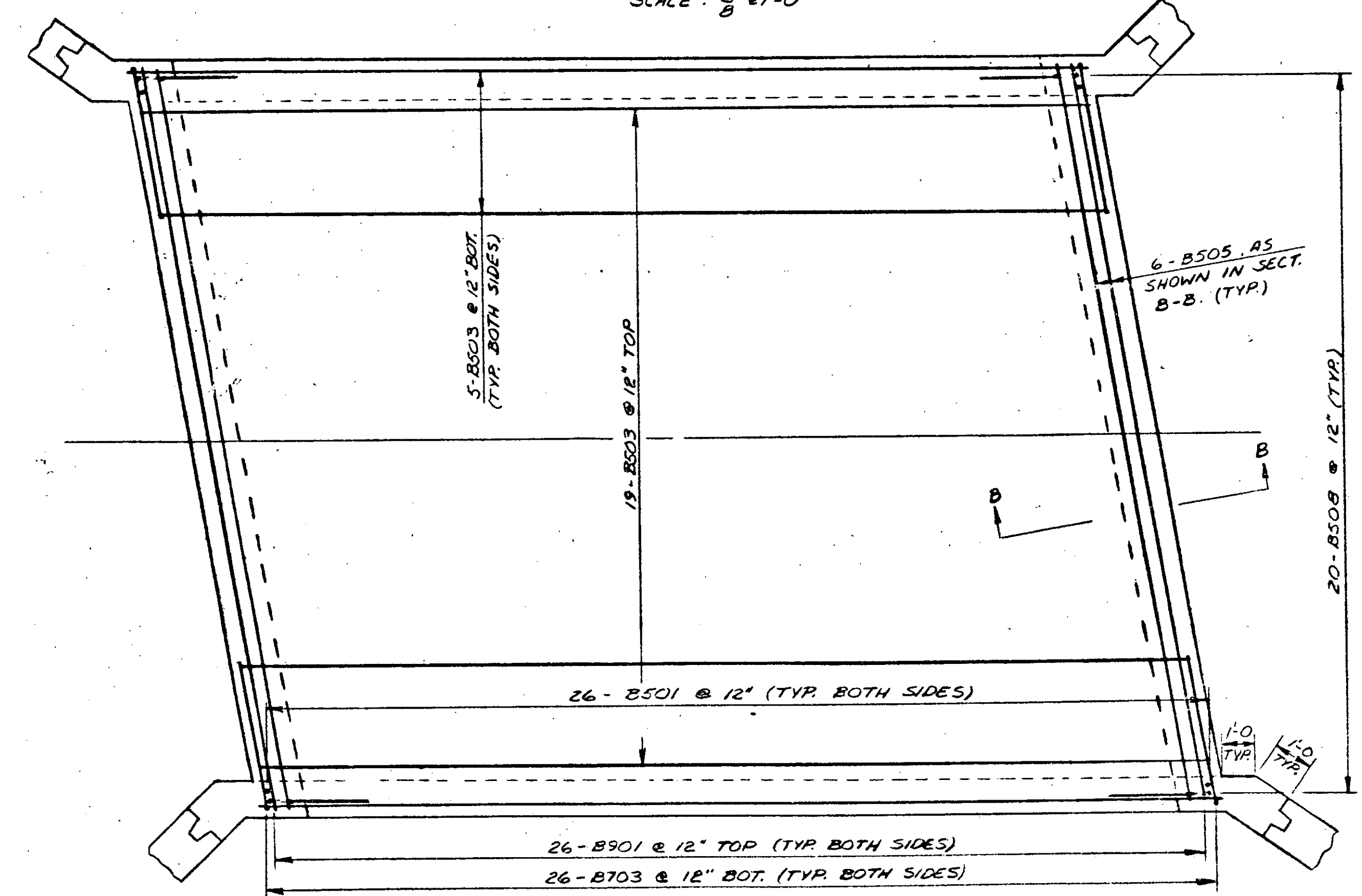
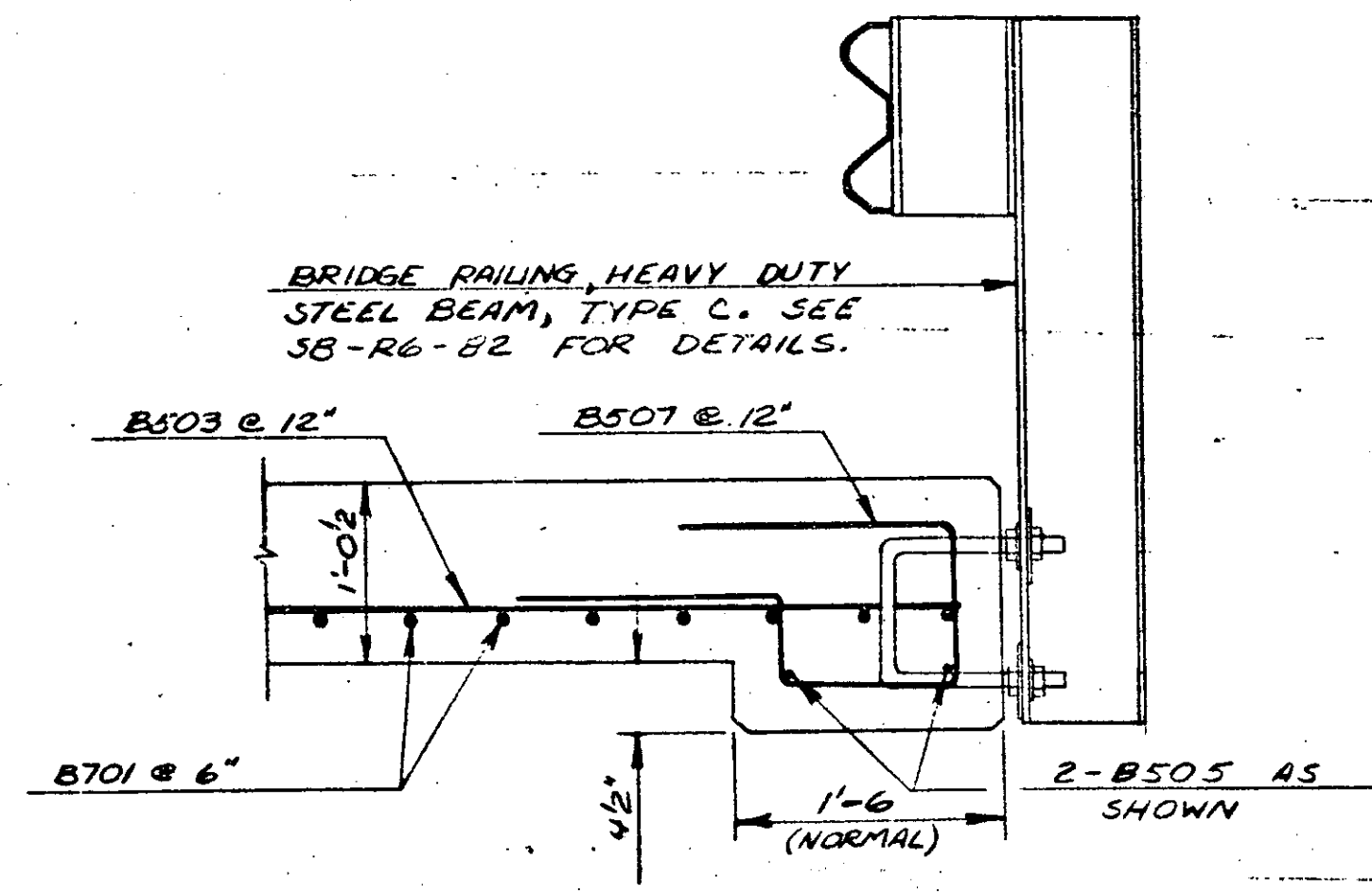


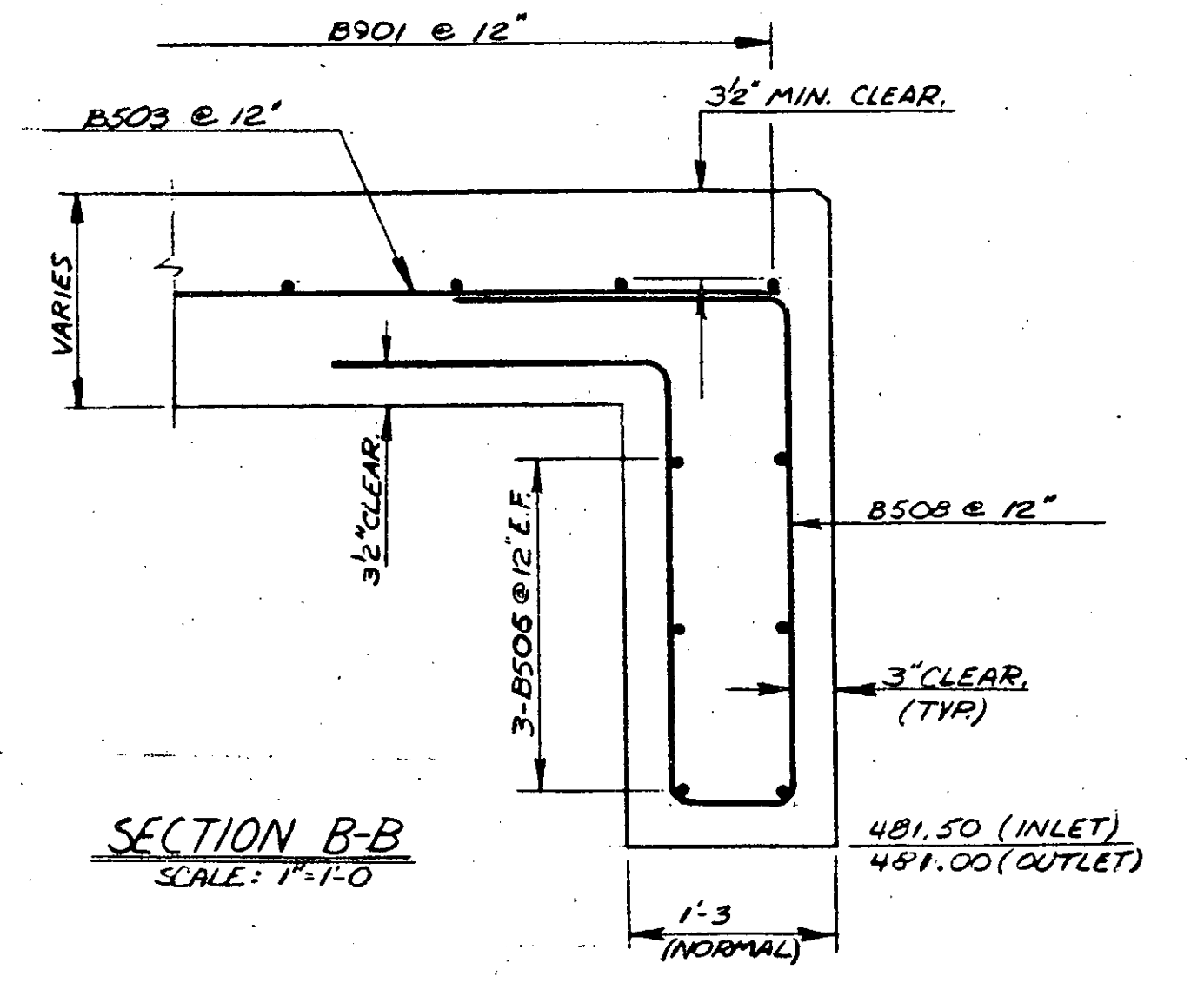
TOP SLAB REINFORCEMENT
SCALE: 3/8"=1'-0"



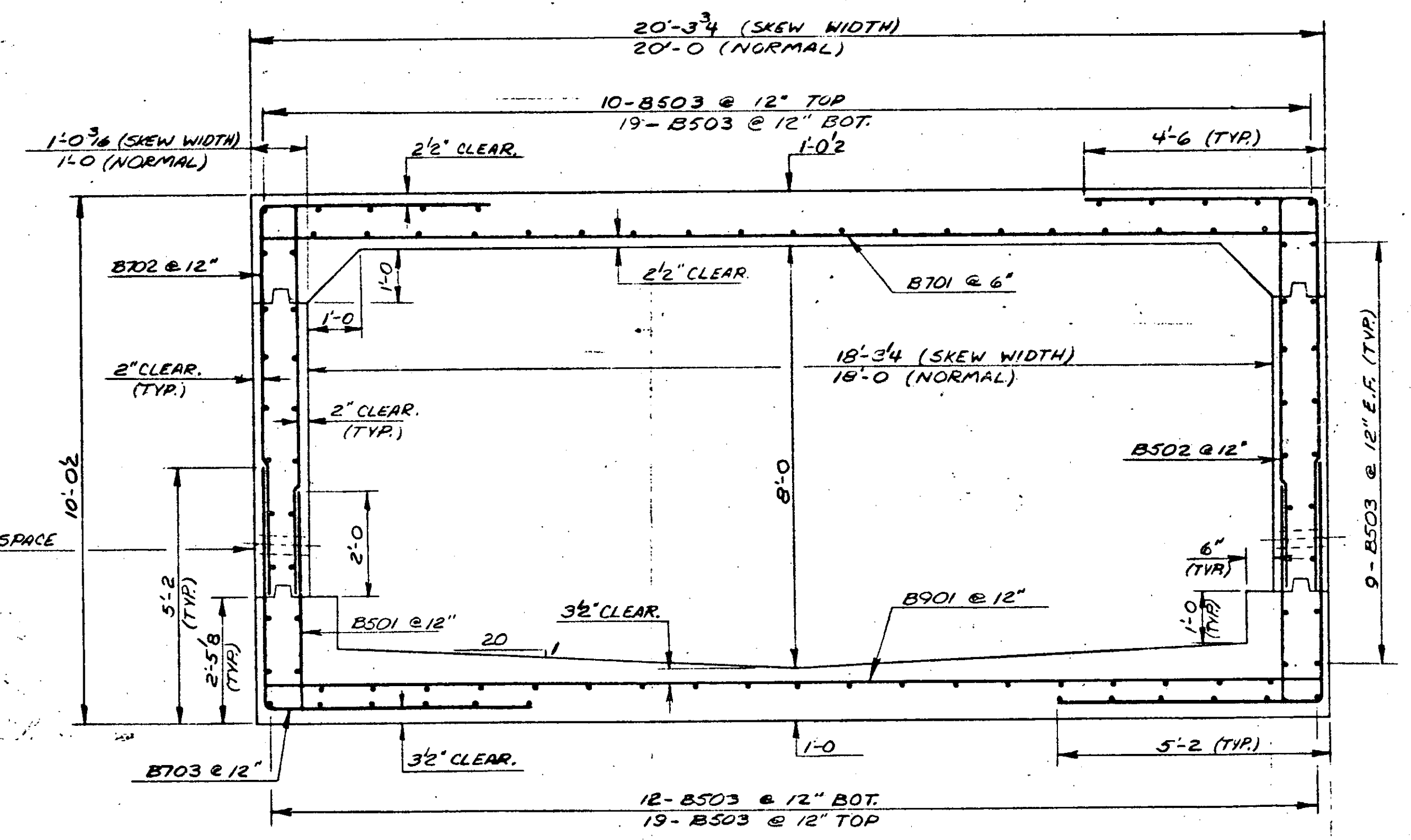
BOTTOM SLAB REINFORCEMENT
SCALE: 3/8"=1'-0"



SECTION A-A
SCALE: 1"=1'-0"



SECTION B-B
SCALE: 1"=1'-0"



TYPICAL BOX SECTION (SKEWED)
SCALE: 1/2"=1'-0"

NOTES

1. FOR ADDITIONAL GENERAL NOTES, SEE STANDARD SOB-DI-75.
2. WATER REPELLENT SHALL BE APPLIED TO ALL EXPOSED AREAS OF THE STRUCTURE, EXCEPT THE BOX INTERIOR.
3. ALL CONCRETE SHALL BE CONCRETE, CLASS B.
4. THERE SHALL BE A 72 HOUR MINIMUM WAITING PERIOD BETWEEN CONCRETE POURS ON OPPOSITE SIDES OF ANY EXPANSION OR CONSTRUCTION JOINT.
5. THE BOTTOM SLAB OF THE BOX SHALL BE SCREEDED AND FLOATED
6. ALL PREFORMED EXPANSION MATERIAL SHALL BE SUBSIDIARY TO CONCRETE, CLASS 'B'.

STATE OF VERMONT	
AGENCY OF TRANSPORTATION	
TOWN OF CHESTER	Bridge No. 60
HIGHWAY NO. TH 24 GL 3	Log Sta. 12+19
TOWN HWY. 24 OVER BROOK	
R.C. BOX REINFORCING DETAILS	
Designed by W. JARVIS	Drawn by G. SCHELLEY
Checked by D.C. WILLEY date 7-83	Bridge Design Supervisor R.L. Dahey date 9-83
PROJECT CHESTER	PROJECT NO. BRZ 1442 (R)
Bridge Sheet No.	Sheet 24 of 32