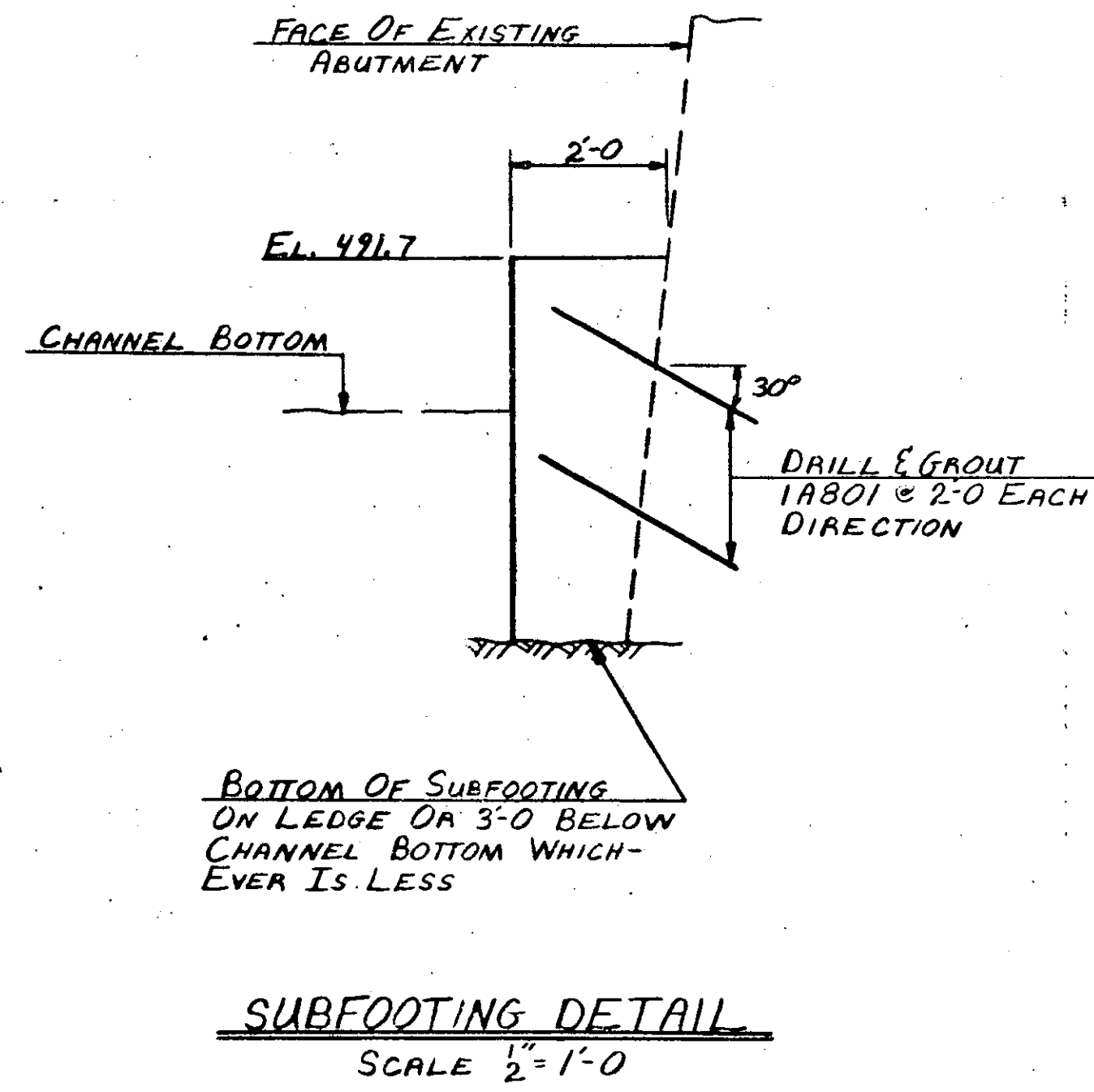
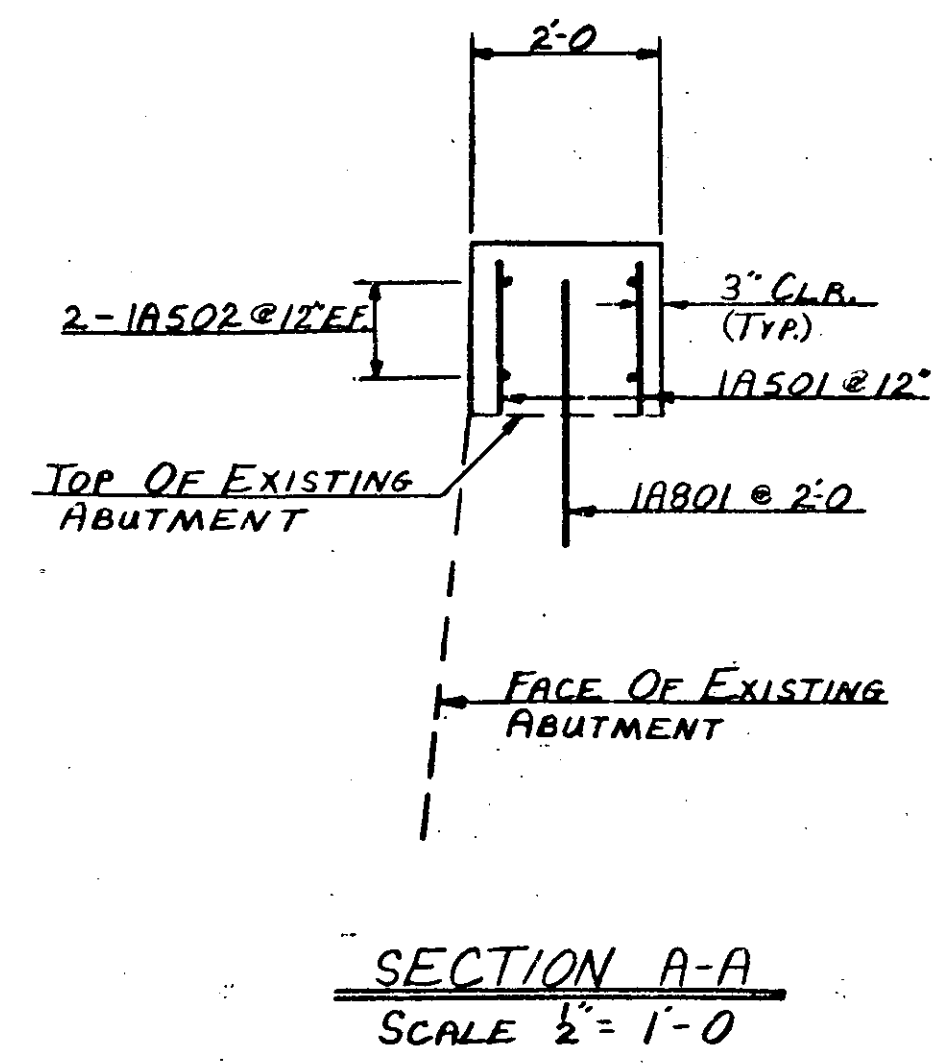
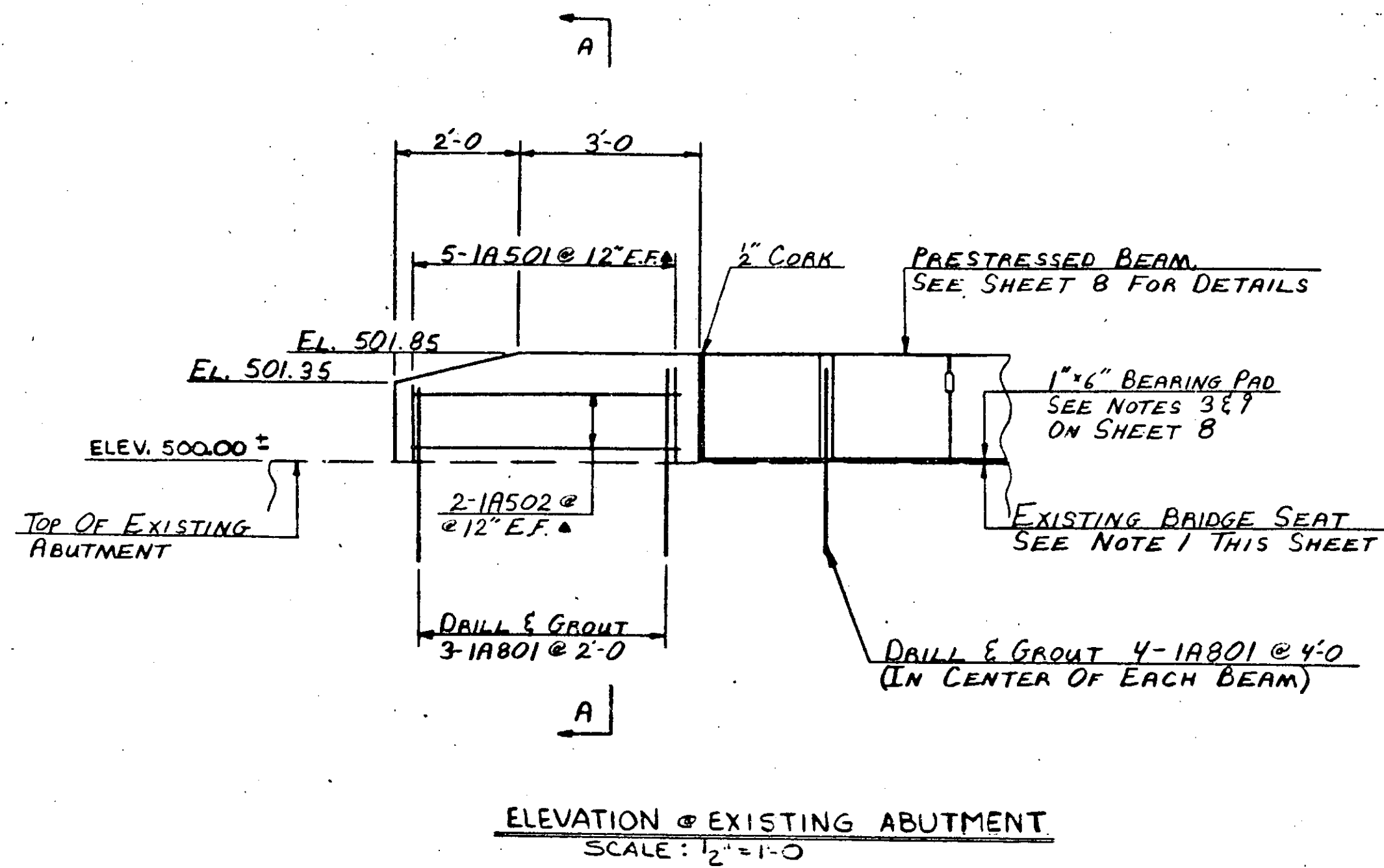


DATE	
BY	
REVISION	
NO.	
PLAN	
NOTE BOOK	
NO.	

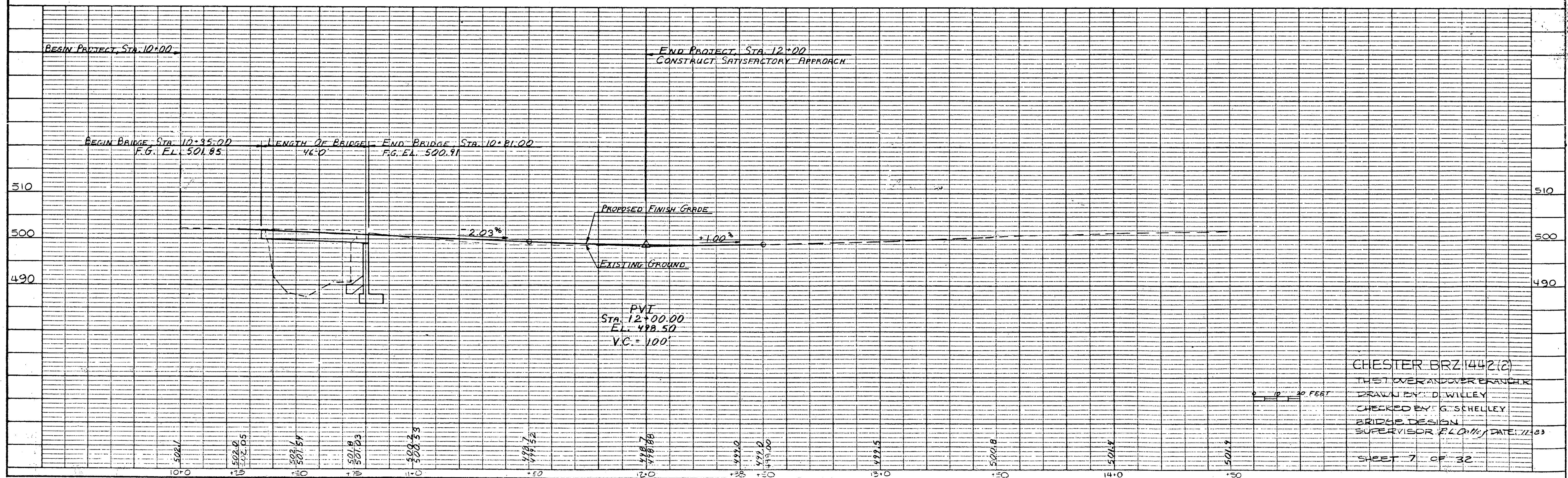


**NOTES**

1. THE BRIDGE SEAT ON ABUTMENT #1 SHALL BE LEVELED AS DIRECTED BY THE ENGINEER. ANY CONCRETE OR MORTAR REQUIRED TO LEVEL THE BRIDGE SEAT SHALL BE PAID FOR AT THE UNIT PRICE BID FOR CONCRETE, CLASS B.
2. ELEVATION IS TYPICAL FOR BOTH SIDES OF THE NEW DECK ON ABUTMENT #1 AND SHALL BE MODIFIED TO FIT FIELD CONDITIONS AS DIRECTED BY THE ENGINEER.
3. A SUBFOOTING SHALL BE POURED IN FRONT OF THE PORTION OF ABUTMENT #1 WHICH IS NOT ON LEDGE.
4. THE 1" FABRIC BEARING PADS AND 1" CORK SHALL BE PLACED ON THE BRIDGE SEAT UNDER THE BEAMS AS SHOWN ON THE ABUTMENT #2 TYPICAL SECTION ON SHEET 9.

**ABUTMENT NO. 1 DETAILS**

DATE	
BY	
REVISION	
NO.	
PROFILE	
NOTE BOOK	
NO.	



CHESTER BRZ 1442(2)  
 THE OVERLAP OVER BRANCH  
 DRAWN BY: D. WILLEY  
 CHECKED BY: G. SCHELLEY  
 BRIDGE DESIGN  
 SUPERVISOR: P.L.O. / DATE: 7/1/83  
 SHEET 7 OF 32