

BRIDGE RAILING, H.D. STEEL BEAM, TYPE D  
 T.H.57 STA. 10+33 TO STA. 10+83 RT. & LT.

ANCHOR FOR STEEL BEAM GUARD RAIL  
WITH STEEL OR WOOD POST AT OPENINGS  
 T.H. 57 STA. 11+00 RT & LT.

GUARD RAIL, H.D. STEEL BEAM WITH WOOD POST  
TYPE II (A588 STEEL) (6'-3" POST SPACING TYPICAL)

Vt. 11 STA. 4+39 RT. TO T.H.57 STA. 10+33 RT.  
 T.H.57 STA. 10+33 LT. TO Vt. 11 STA. 5+35 RT.  
 T.H.57 STA. 10+83 TO STA. 11+08 RT. & LT.

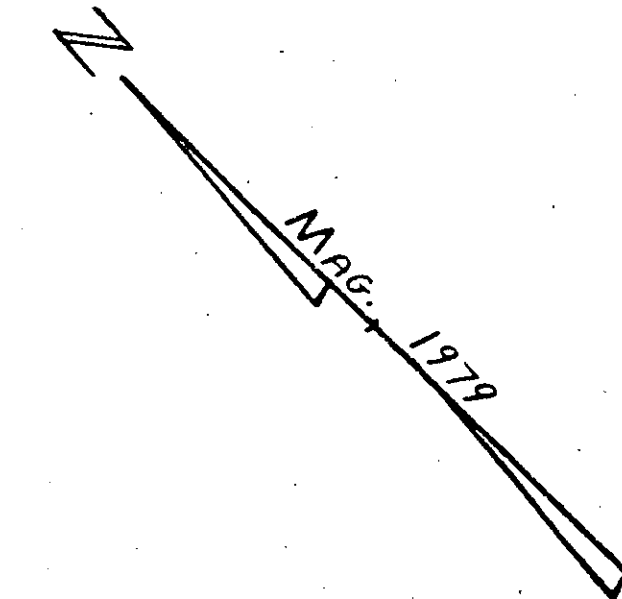
BREAKAWAY CABLE TERMINAL FOR GUARD RAIL,  
STEEL BEAM W/ WOOD POSTS, TYPE II

Vt. 11 STA. 4+39 RT.  
 Vt. 11 STA. 5+37 RT.

STONE FILL, TYPE II  
 CHAN. STA. 4+72 TO 5+25 RT.

TEMPORARY BRIDGE NOTES:

- 1) TEMPORARY BRIDGE IS TO BE LOCATED IN APPROXIMATE LOCATION AS PREVIOUS TEMPORARY CROSSINGS AND APPROXIMATELY AS SHOWN ON THIS DRAWING.
- 2) EVERY EFFORT SHALL BE MADE TO SAVE AS MANY TREES AS POSSIBLE.
- 3) FINAL LOCATION OF TEMPORARY BRIDGE, ACCESS ROAD, AND CONSTR. EASEMENTS SHALL MEET THE APPROVAL OF THE PROPERTY OWNER.



END SIDELINE STA. 6+00  
CONSTRUCT SATISFACTORY APPROACH

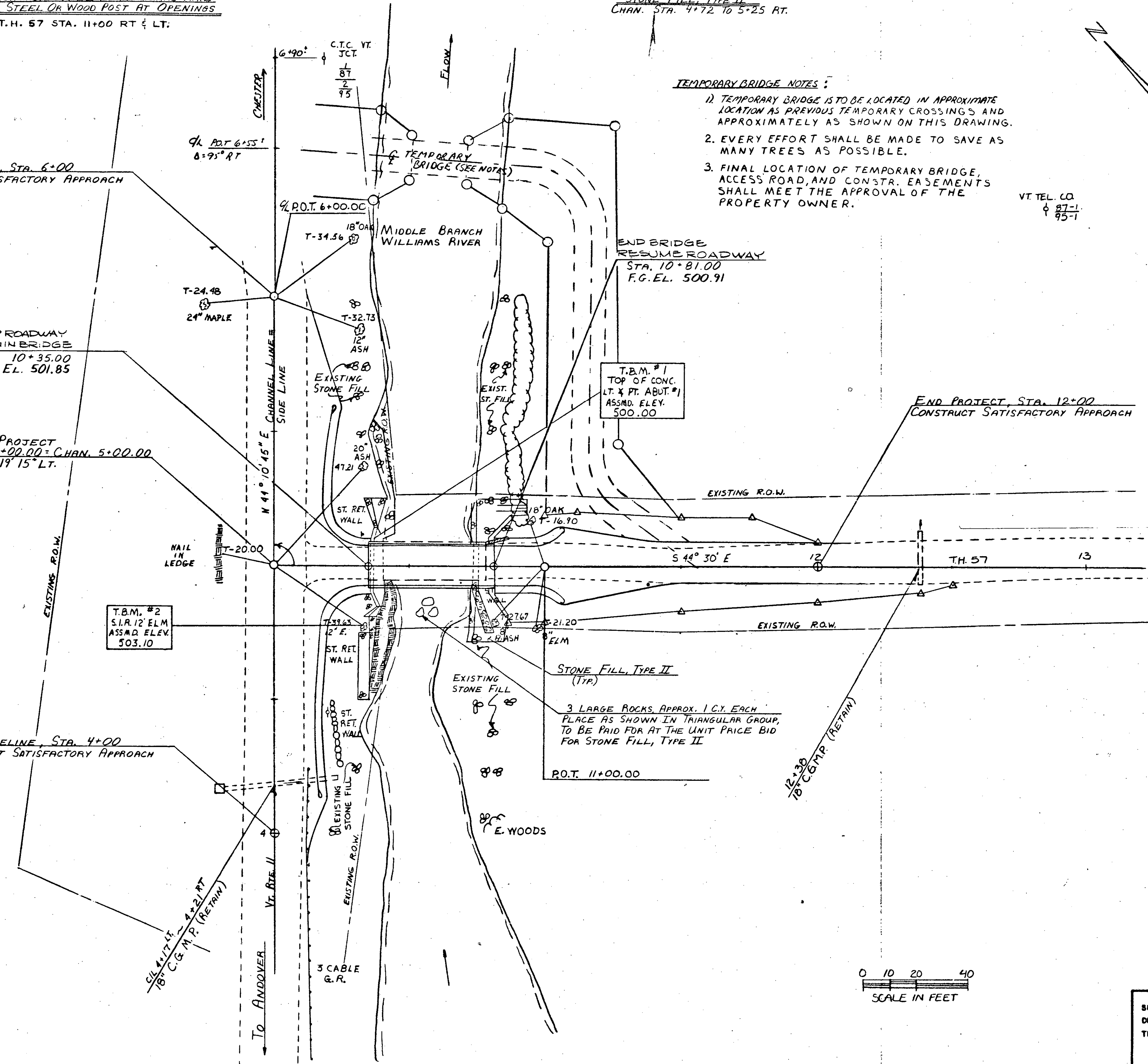
STOP ROADWAY  
BEGIN BRIDGE  
 STA. 10+35.00  
 F.G. EL. 501.85

BEGIN PROJECT  
M/L 10+00.00 = CHAN. 5+00.00  
 $\Delta = 90^\circ 19' 15" \text{ LT.}$

BEGIN SIDELINE STA. 4+00  
CONSTRUCT SATISFACTORY APPROACH

END BRIDGE  
RESUME ROADWAY  
 STA. 10+81.00  
 F.G. EL. 500.91

END PROJECT, STA. 12+00  
CONSTRUCT SATISFACTORY APPROACH



Vt. TEL. CO.  
 87-1  
 95-1

T.B.M. #1  
 TOP OF CONC.  
 LT. & PT. ABUT. #1  
 ASSMD. ELEV.  
 500.00

T.B.M. #2  
 S.I.R. 12 ELM  
 ASSMD. ELEV.  
 503.10

STONE FILL, TYPE II  
 (TIP)  
 3 LARGE ROCKS, APPROX. 1 C.Y. EACH  
 PLACE AS SHOWN IN TRIANGULAR GROUP,  
 TO BE PAID FOR AT THE UNIT PRICE BID  
 FOR STONE FILL, TYPE II



SURVEYED BY	TESSIER	DATE	12/79
DRAWN BY	ORVIS	DATE	2/80
TRACED BY	PASE	DATE	2/00
<b>CHESTER</b>			
PROJ.	NO. BRZ. 1442(2)		
SHEET	6 OF 32		