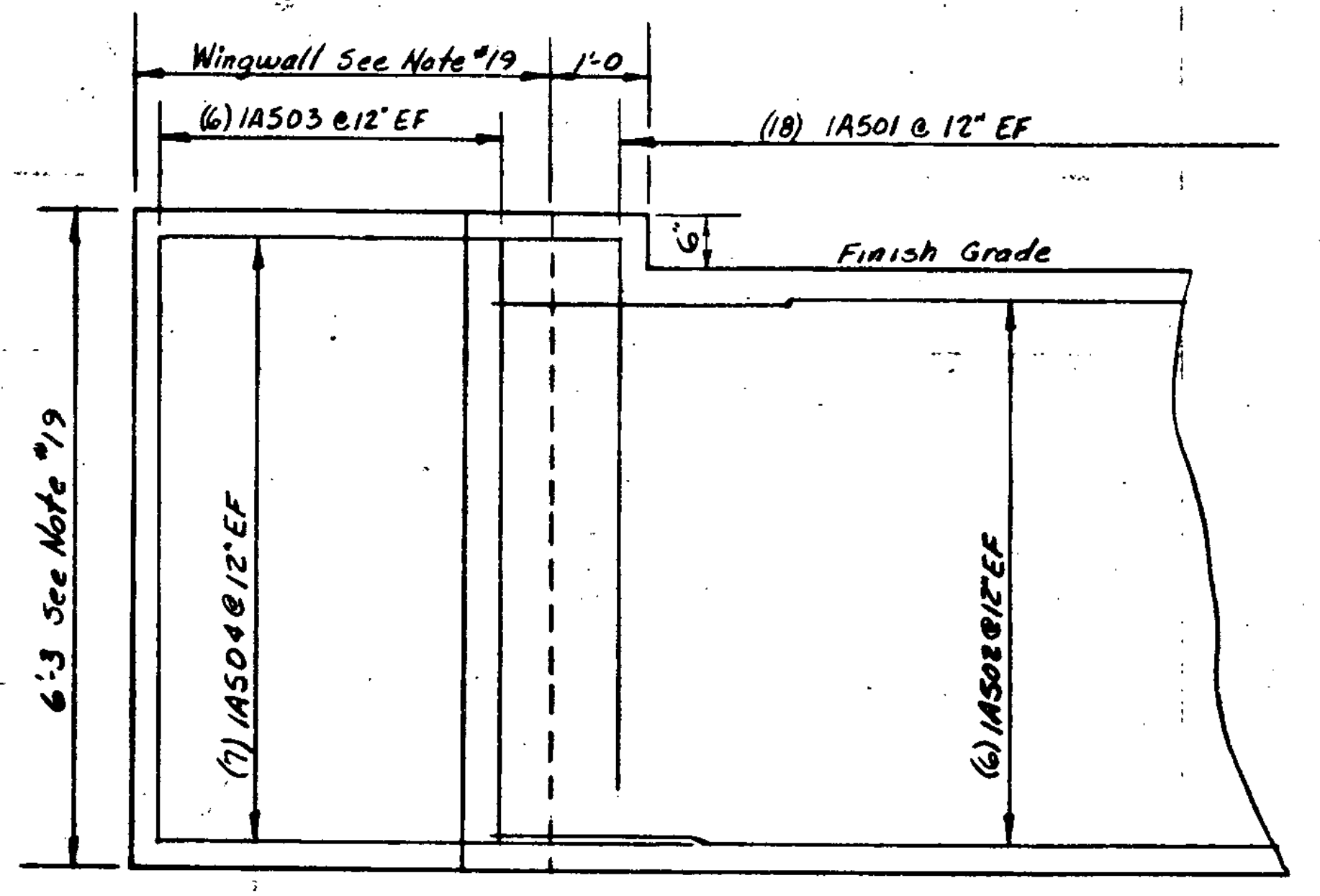


~PARTIAL PLAN AT END OF BRIDGE~
Scale 3/4" = 1'-0"



~ ELEVATION OF BACKWALL & WINGWALL ~
Scale 3/4" = 1'-0"

STATE OF VERMONT	
AGENCY OF TRANSPORTATION	
TOWN OF <i>IRASBURG</i>	Bridge No. <i>20</i>
HIGHWAY NO. <i>CLASS 3, TH 8</i>	Log Sta. <i>—</i>
	Surr. Sta. <i>—</i>
<i>TH 8 OVER BLACK RIVER</i>	
~ MISCELLANEOUS DETAILS ~	
Designed by	Drawn by <i>M. CERUTTI</i>
Checked by <i>G. SCHELLEY</i> date <i>8/93</i>	Bridge Design Supervisor <i>E. L. O'Leary</i> date <i>2-84</i>
PROJECT <i>IRASBURG</i>	PROJECT NO. <i>TH 3146</i>
Bridge Sheet No.	Sheet <i>4</i> of <i>10</i>

BRUNING 44-131 50304