

GUARD RAIL, H.D. STEEL BEAM W/WOOD POSTS, TYPE II
 M/L 12+51 Lt ~ M/L 12+87 Lt
 M/L 12+61 Rt ~ M/L 12+87 Rt
 M/L 13+49 Rt ~ TH-4 29+50 Rt
 M/L 15+49 Rt ~ TH-4 31+25 Rt

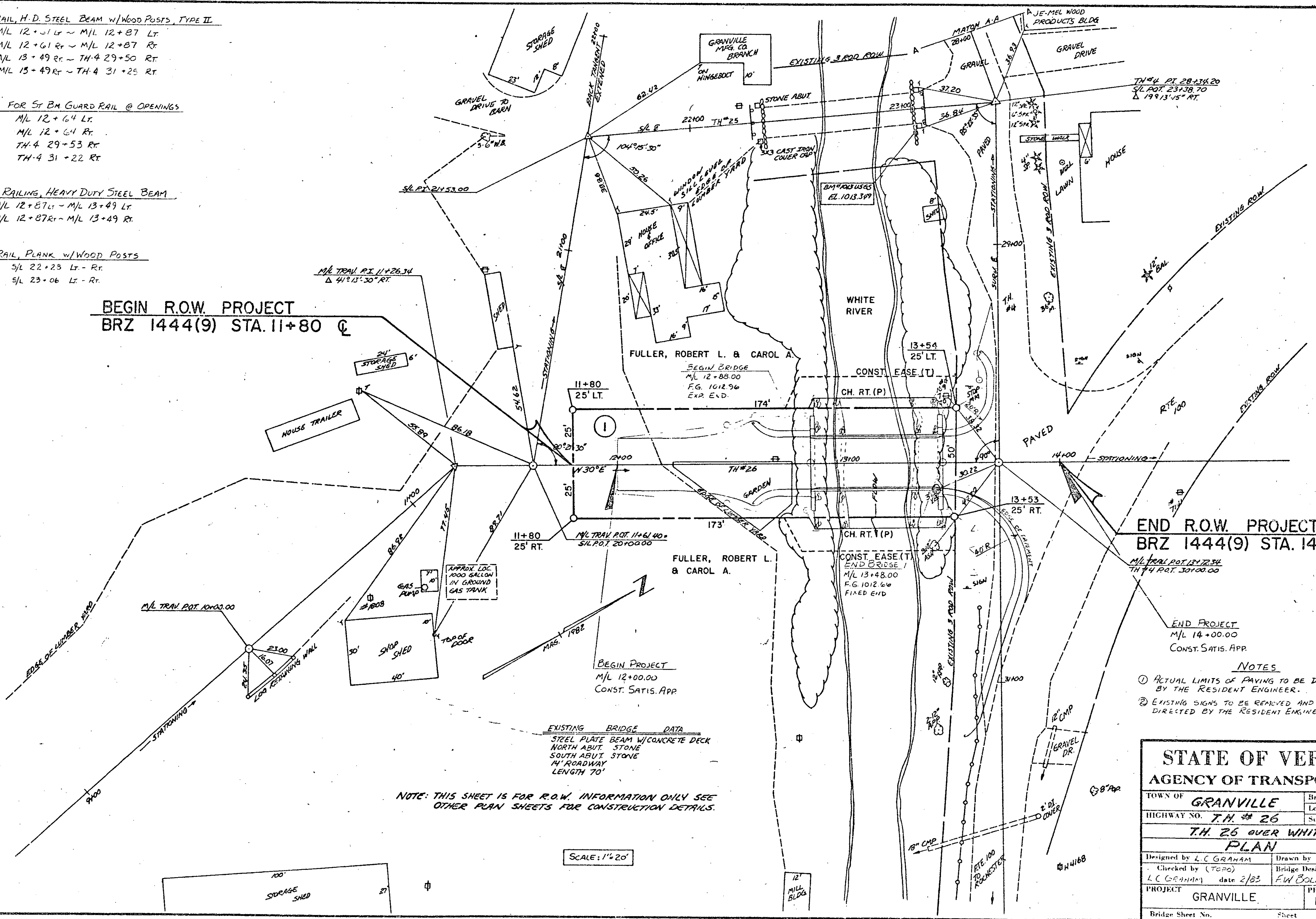
ANCHORS FOR ST BM GUARD RAIL @ OPENINGS
 M/L 12+64 Lt
 M/L 12+64 Rt
 TH-4 29+53 Rt
 TH-4 31+22 Rt

BRIDGE RAILING, HEAVY DUTY STEEL BEAM
 M/L 12+87 Lt ~ M/L 13+49 Lt
 M/L 12+87 Rt ~ M/L 13+49 Rt

GUARD RAIL, PLANK W/WOOD POSTS
 S/L 22+23 Lt - Rt
 S/L 23+06 Lt - Rt

BEGIN R.O.W. PROJECT
 BRZ 1444(9) STA. 11+80 @

END R.O.W. PROJECT
 BRZ 1444(9) STA. 14+00 @



EXISTING BRIDGE DATA
 STEEL PLATE BEAM W/CONCRETE DECK
 NORTH ABUT. STONE
 SOUTH ABUT. STONE
 14' ROADWAY
 LENGTH 70'

NOTE: THIS SHEET IS FOR R.O.W. INFORMATION ONLY SEE
 OTHER PLAN SHEETS FOR CONSTRUCTION DETAILS.

SCALE: 1" = 20'

END PROJECT
 M/L 14+00.00
 CONST. SATIS. APP.

- NOTES
- ACTUAL LIMITS OF PAVING TO BE DETERMINED BY THE RESIDENT ENGINEER.
 - EXISTING SIGNS TO BE REMOVED AND RESET AS DIRECTED BY THE RESIDENT ENGINEER.

STATE OF VERMONT	
AGENCY OF TRANSPORTATION	
TOWN OF GRANVILLE	Bridge No. 23
HIGHWAY NO. T.H. # 26	Log Sta. ---
T.H. 26 OVER WHITE RIVER	
PLAN	
Designed by L.C. GRAHAM	Drawn by L.C. GATES
Checked by (TOP) L.C. GRAHAM date 2/83	Bridge Design Supervisor F.W. BOLKUM date 2/83
PROJECT GRANVILLE	PROJECT NO. BRZ 1444(9)
Bridge Sheet No. 7	Sheet 7 of 41

BRZ 1444(9) STA. 11+80