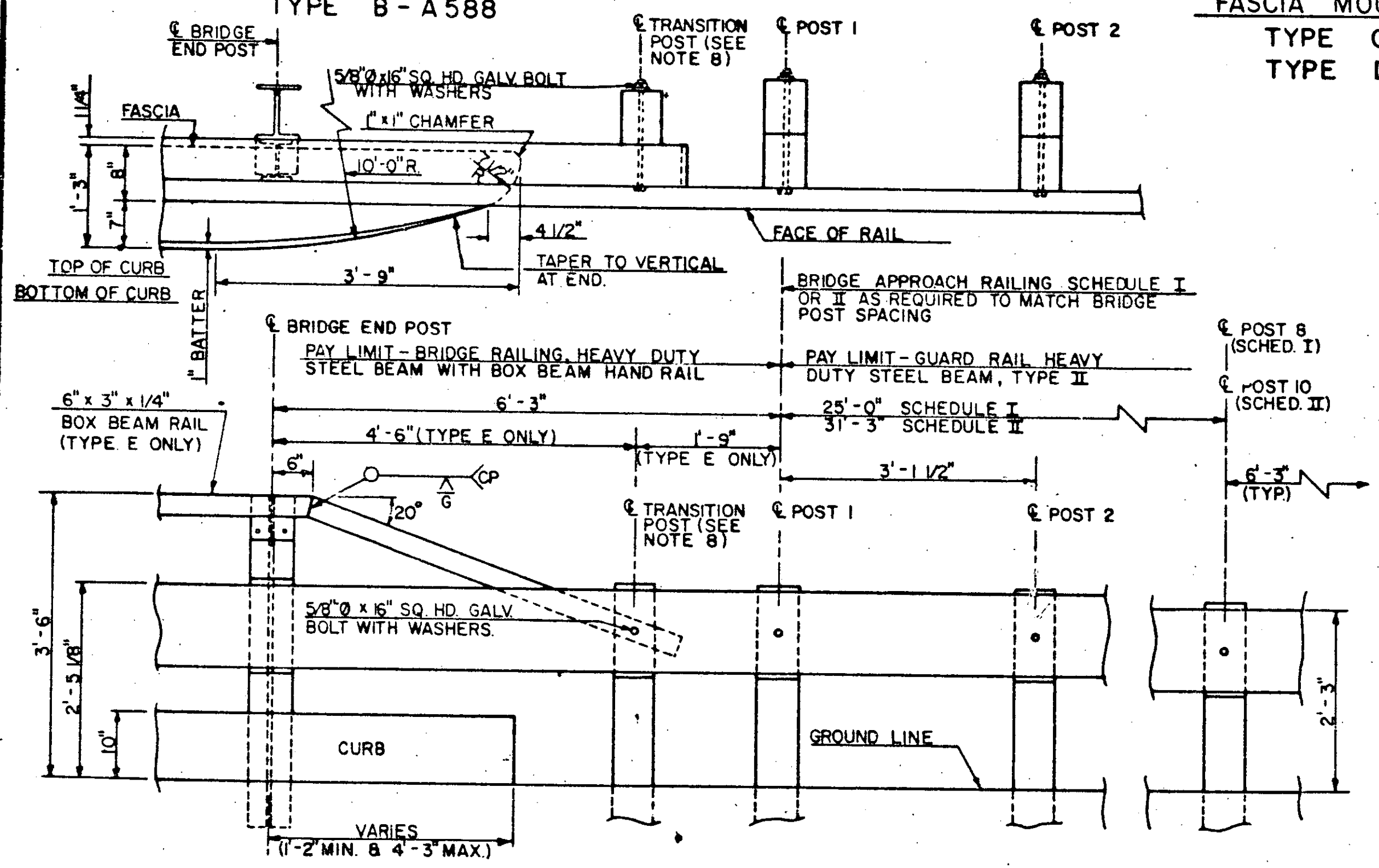


FASCIA MOUNTED STEEL POST
TYPE A - GALVANIZED
TYPE B - A588

FASCIA MOUNTED STEEL POST
TYPE C - GALVANIZED
TYPE D - A588

FASCIA MOUNTED STEEL POST
WITH BOX BEAM HAND RAIL
TYPE E - GALVANIZED

- NOTES**
- SEE STANDARD DRAWING G-1 & G-1d FOR ADDITIONAL DETAILS OF STEEL BEAM GUARD RAIL AND STANDARD SB-R46-82 FOR ADDITIONAL DETAILS OF BOX BEAM RAIL.
 - ANCHOR BOLTS, NUTS AND WASHERS SHALL BE GALVANIZED AND CONFORM WITH SECTION 714.16.
 - BRIDGE RAIL TYPES A, C, & E: HEAVY DUTY STEEL BEAM RAIL SHALL BE AASHTO M 180, CLASS B - TYPE 2. POSTS, BRACKETS AND PLATE WASHER SHALL BE ASTM A 36 STEEL. BOLTS SHALL BE ASTM A 307. ALL MATERIAL SHALL BE GALVANIZED AFTER FABRICATION TO ASTM A 123.
 - BRIDGE RAIL TYPE B & D: HEAVY DUTY STEEL BEAM RAIL SHALL BE AASHTO M 180, CLASS B - TYPE 4. POSTS, BRACKETS & PLATE WASHER SHALL BE ASTM A 588 STEEL. BOLTS SHALL BE ASTM A 325 TYPE III.
 - ALL POSTS SHALL BE SET NORMAL TO GRADE.
 - BRIDGE APPROACH RAIL HEIGHT SHALL BE TRANSITIONED TO NORMAL ROADWAY RAIL HEIGHT IN 25 FEET.
 - APPROACH RAILING SHALL BE HEAVY DUTY STEEL BEAM FOR 50 FEET FROM THE END OF THE BRIDGE.
 - FOR THE TYPE A, B, C, OR D BRIDGE RAILING, THE TRANSITION POST SHALL HAVE AN OFFSET BLOCK AND BE LOCATED AS CLOSE AS PRACTICAL TO THE MID-POINT BETWEEN THE BRIDGE END POST AND APPROACH RAIL POST I.
 - SPLICES SHALL LAP IN DIRECTION OF TRAFFIC FLOW.
 - SEE STANDARD SHEET G-1 FOR DELINEATOR DETAILS AND PLACEMENT.
 - ERECT DELINEATOR ON EVERY FIFTH POST OR APPROXIMATELY 30 FEET APART. PAYMENT SHALL BE SUBSIDIARY TO OTHER ITEMS.

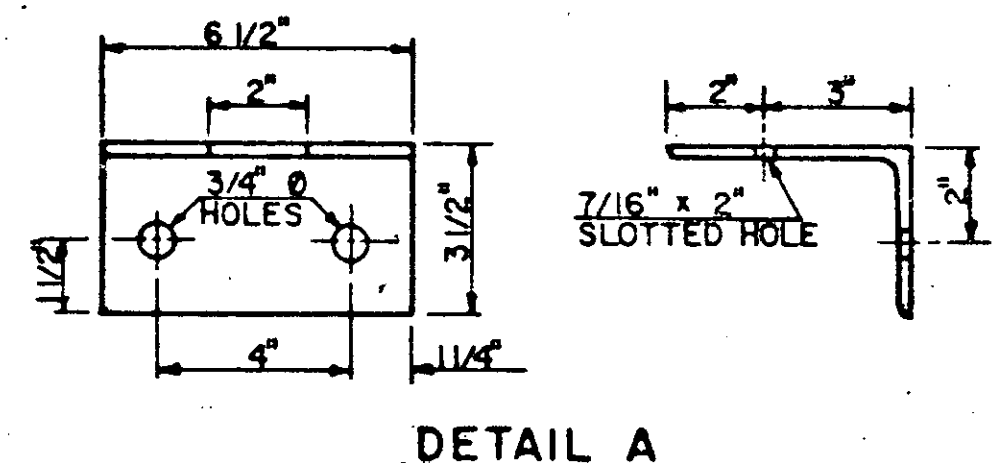


BRIDGE APPROACH DETAILS

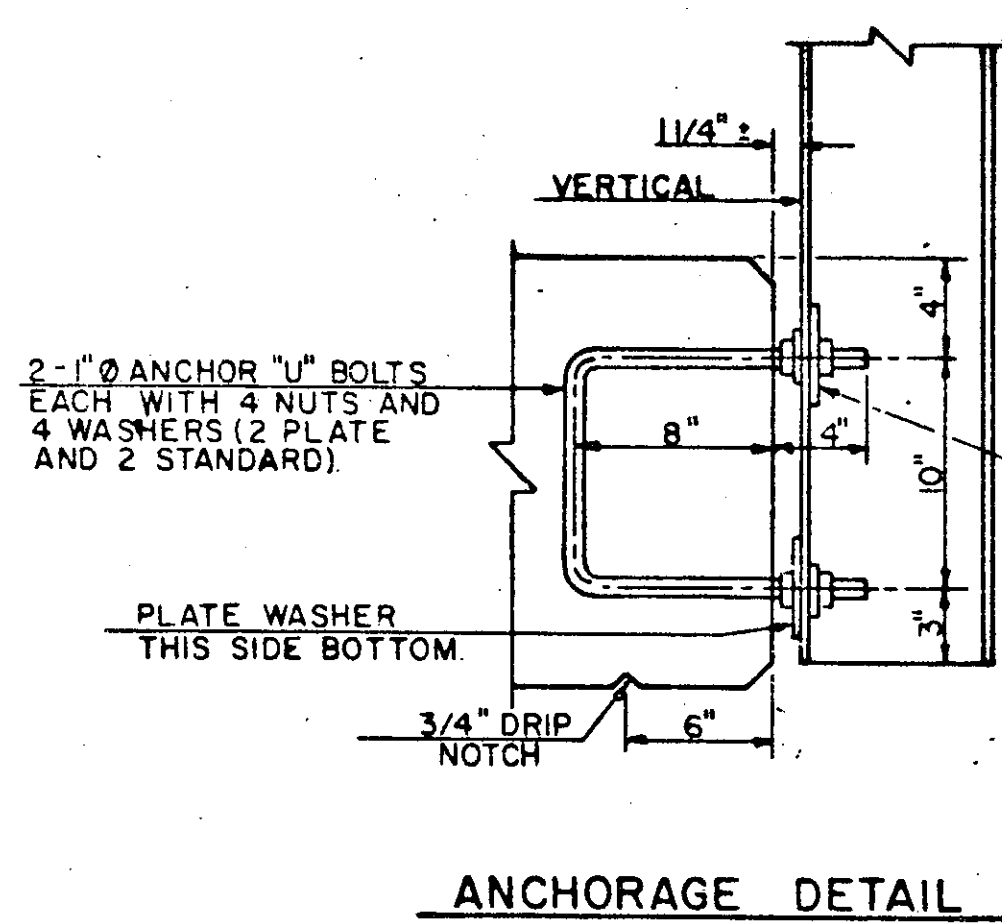
BRIDGE APPROACH RAILING
WHEN A RAIL PANEL SPLICE OCCURS AT POST NO. 1 USE SCHEDULE I FOR APPROACH RAILING. WHEN A RAIL PANEL SPLICE OCCURS AT BRIDGE END POST USE SCHEDULE II FOR APPROACH RAILING.

SCHEDULE I		
POST NO.	SPACING	PAYMENT FACTOR
1		
2	3'-11/2"	
3	3'-11/2"	1.4 x 12'-6"
4	3'-11/2"	
5	3'-11/2"	
6	4'-2"	
7	4'-2"	1.2 x 12'-6"
8	4'-2"	
9	6'-3" (TYP)	1.0 (TYP)

SCHEDULE II		
POST NO.	SPACING	PAYMENT FACTOR
1		
2	3'-11/2"	
3	3'-11/2"	
4	3'-11/2"	1.4 x 18'-9"
5	3'-11/2"	
6	3'-11/2"	
7	3'-11/2"	
8	4'-2"	
9	4'-2"	1.2 x 12'-6"
10	4'-2"	
11	6'-3" (TYP)	1.0 (TYP)



DETAIL A



ANCHORAGE DETAIL

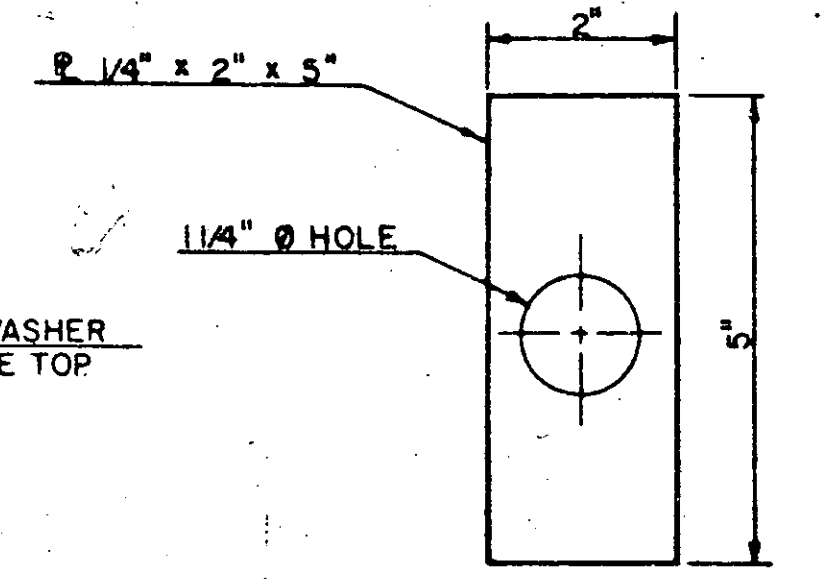
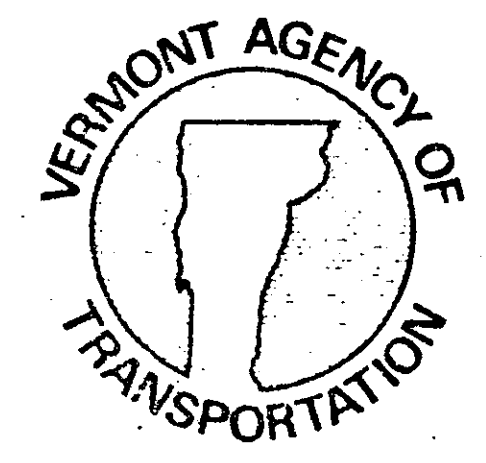


PLATE WASHER DETAIL

REVISIONS AND CORRECTIONS
REVISION DELINEATORS ADDED D.A.R. 6-18-82

APPROVED:
 DECEMBER 28, 1981
 DATE
Arthur H. Bass
 CHIEF OF DESIGN
W. M. Smith
 STRUCTURES ENGINEER
10
 DIRECTOR OF ENGINEERING AND CONSTRUCTION

**BRIDGE RAILING HEAVY DUTY STEEL BEAM
(TYPE A, TYPE B, TYPE C, AND TYPE D)
BRIDGE RAILING HEAVY DUTY STEEL BEAM
WITH BOX BEAM HAND RAIL (TYPE E)**



**STANDARD
SB-R6-82**