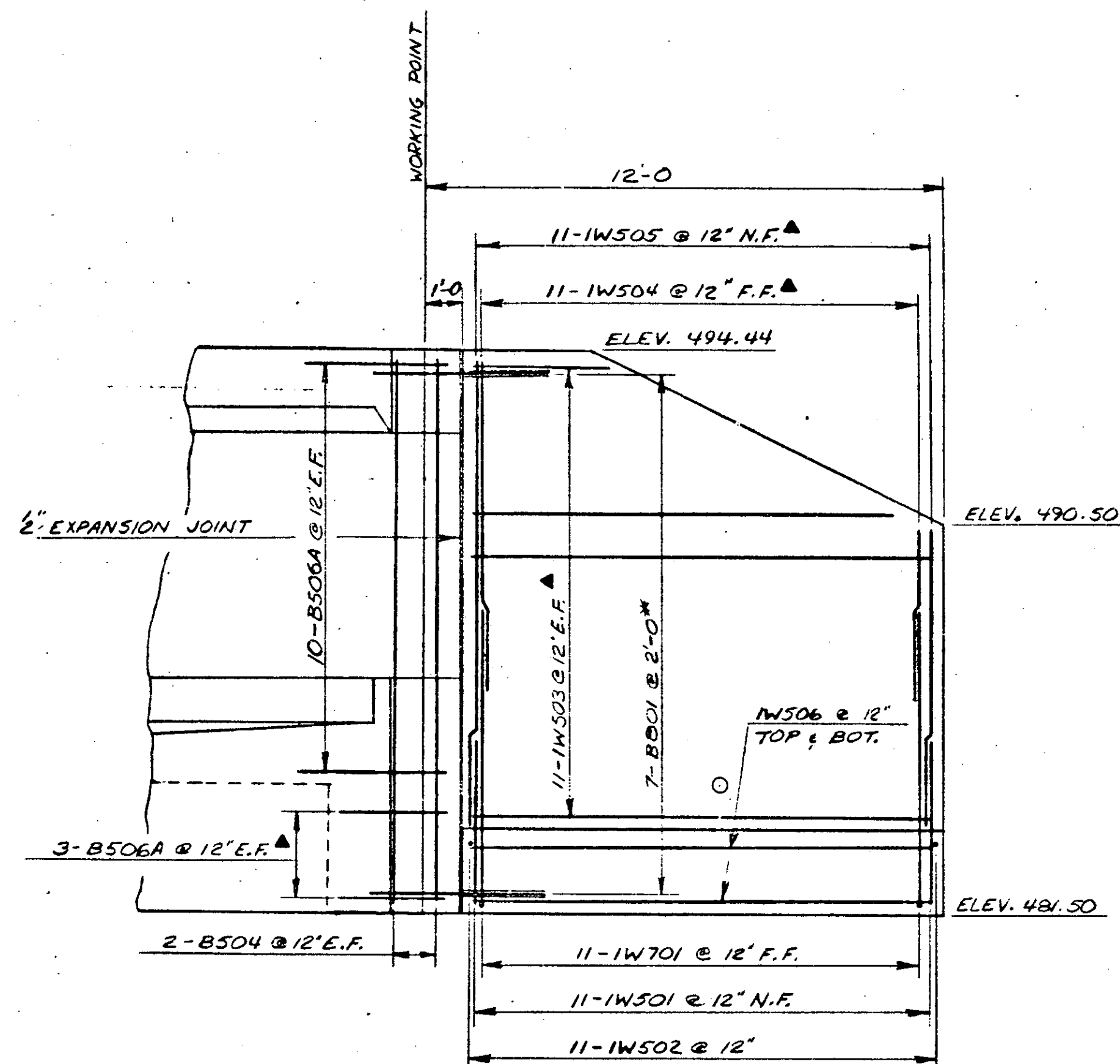
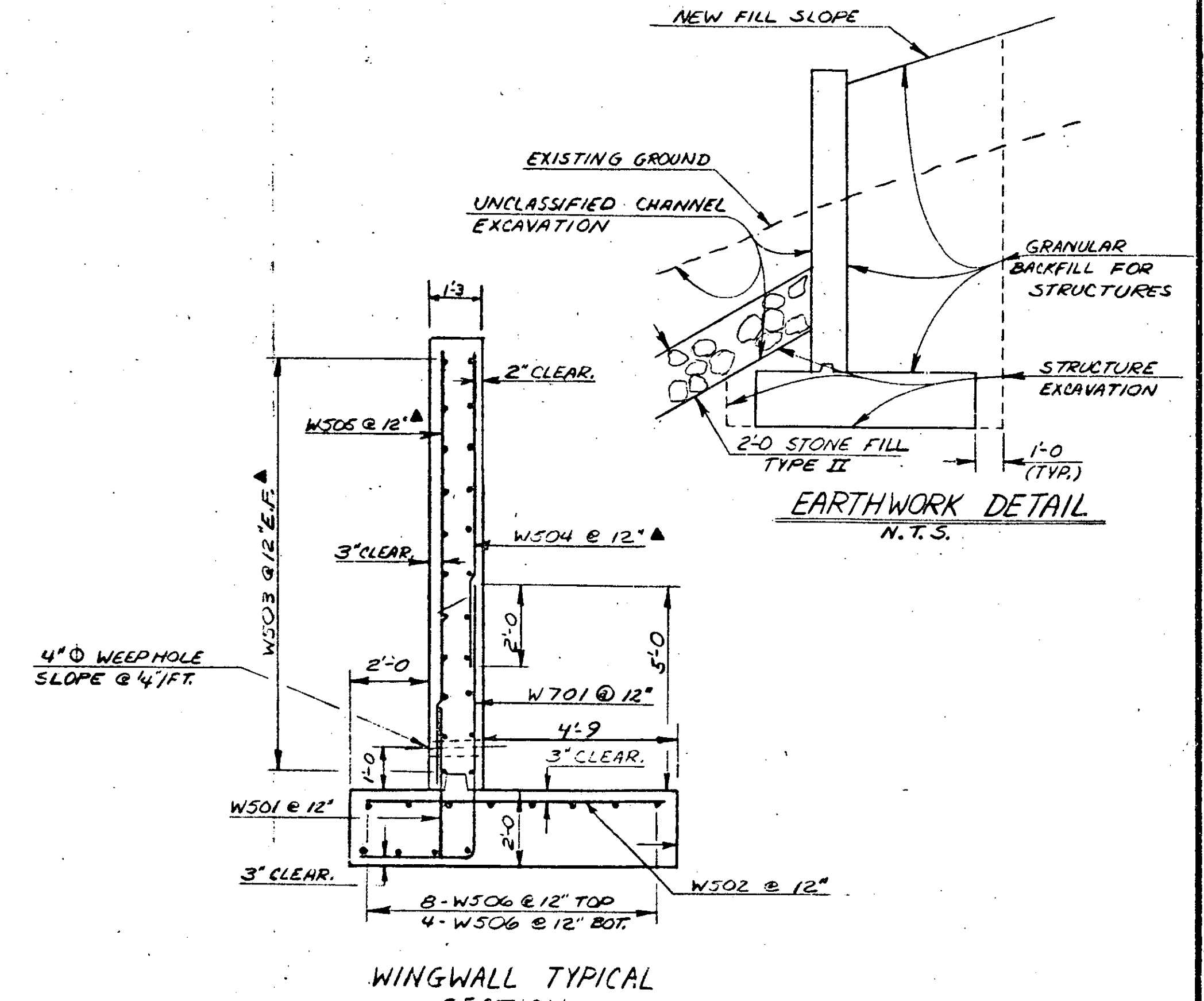


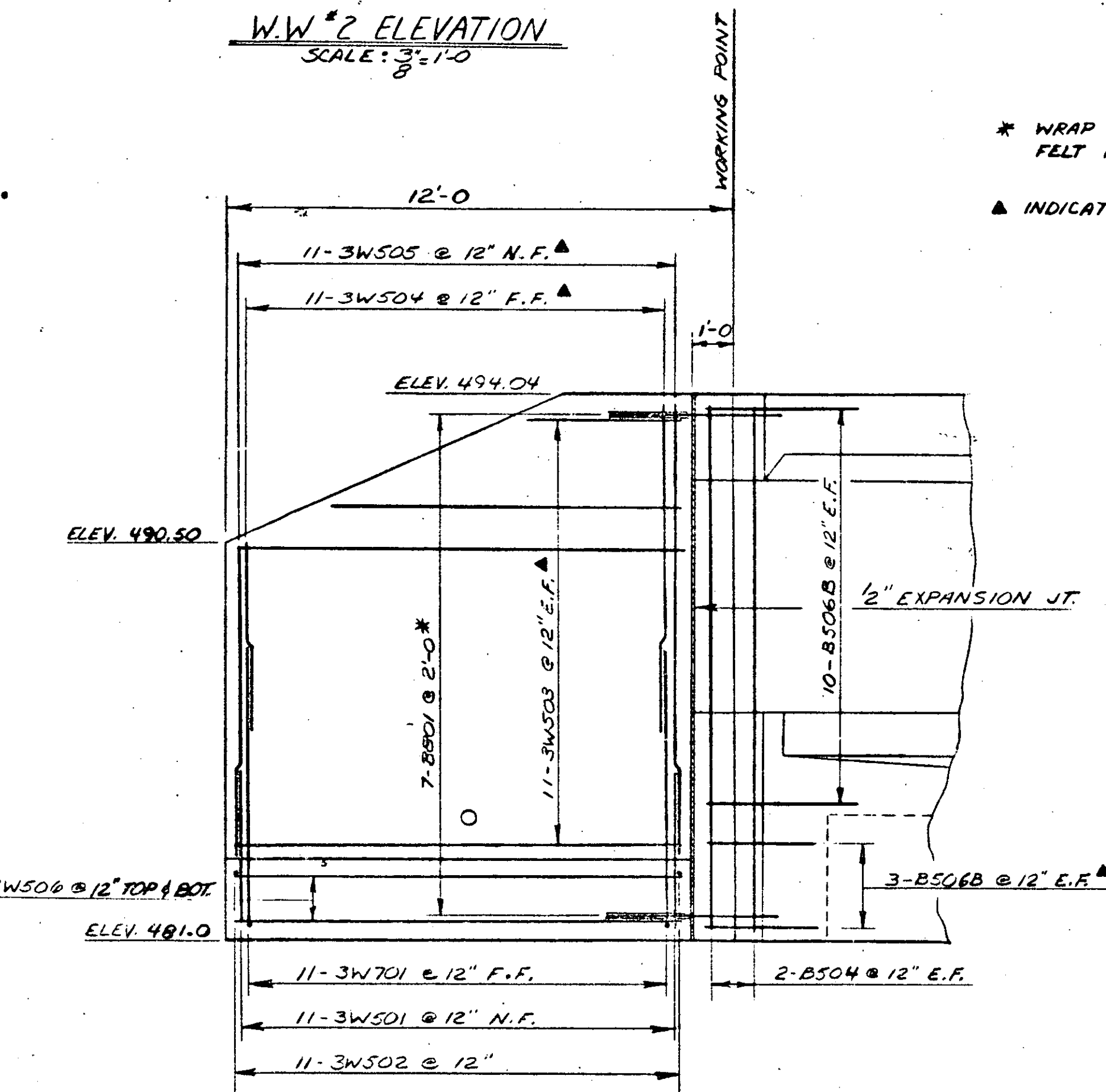
W.W. #2 ELEVATION  
SCALE: 3/8"=1'-0"



W.W. #1 ELEVATION  
SCALE: 3/8"=1'-0"

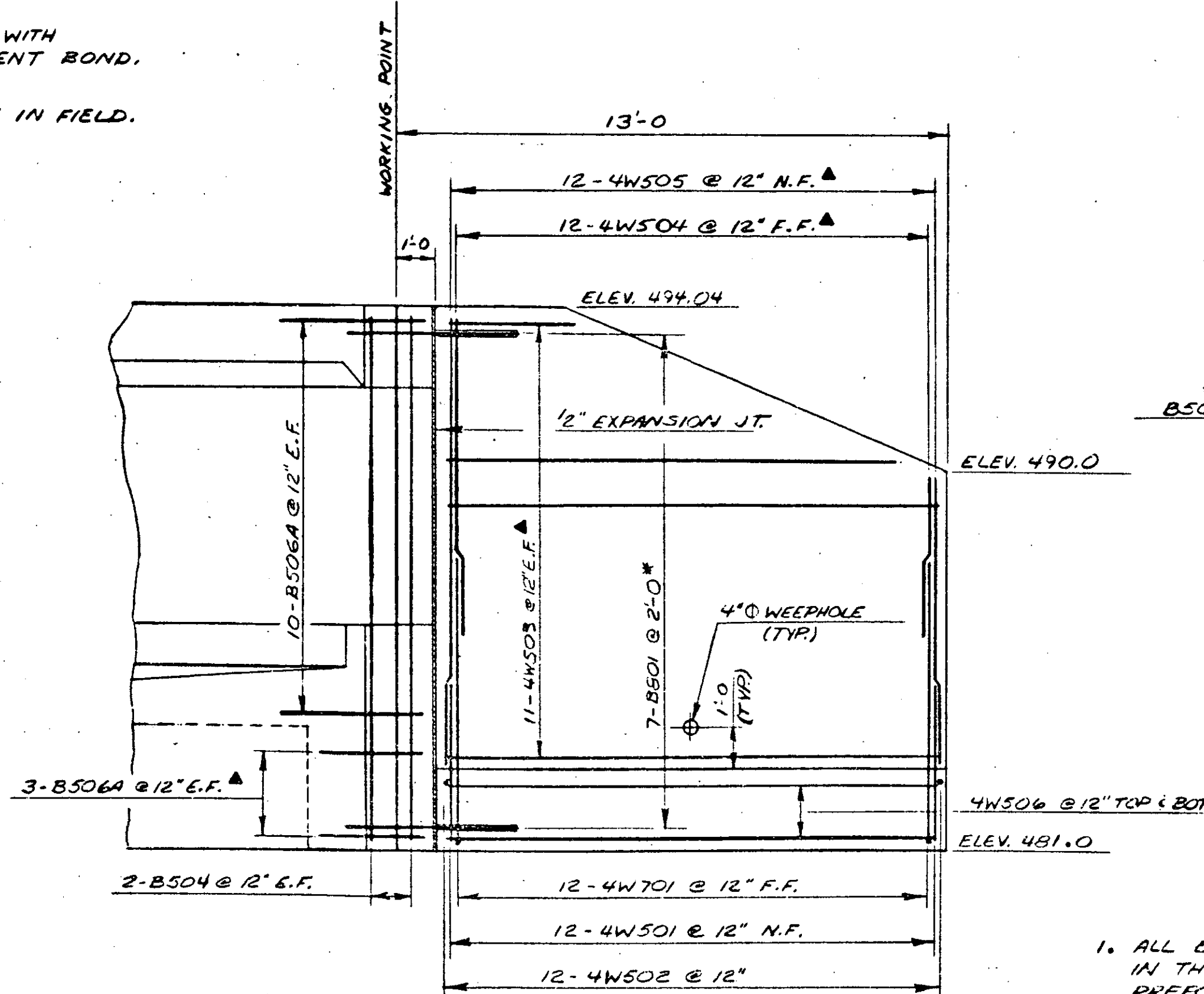


WINGWALL TYPICAL SECTION  
SCALE: 3/8"=1'-0"

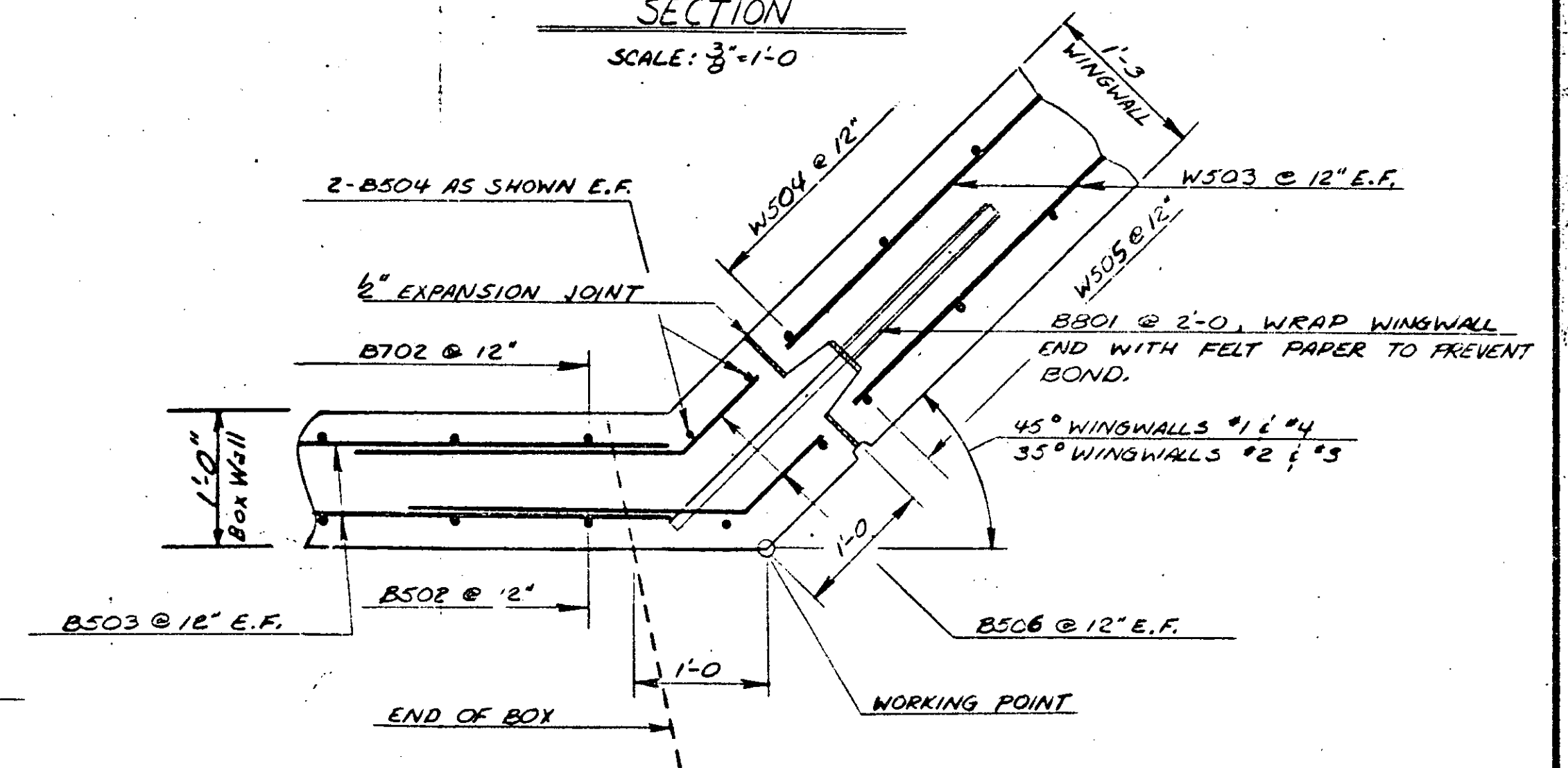


W.W. #3 ELEVATION  
SCALE: 3/8"=1'-0"

\* WRAP WINGWALL END WITH FELT PAPER TO PREVENT BOND.  
▲ INDICATES CUT TO FIT IN FIELD.



W.W. #4 ELEVATION  
SCALE: 3/8"=1'-0"



CORNER TYPICAL  
Scale 1"=1'-0"

NOTES

1. ALL EXPANSION MATERIAL TO BE USED IN THE EXPANSION JOINTS SHALL BE PREFORMED, CLOSED CELL FOAM EXPANSION MATERIAL.
2. SEE SCB-D6-73 FOR DETAILS OF CONSTRUCTION JOINTS AND VERTICAL EXPANSION JOINTS.

STATE OF VERMONT  
AGENCY OF TRANSPORTATION

TOWN OF <b>CHESTER</b>	Bridge No. <b>60</b>
HIGHWAY NO. <b>TH 24</b>	Log Sta. <b></b>
<b>TH 24 OVER BROOK</b>	Surv. Sta. <b>12+19</b>
<b>WING DETAIL &amp; REINFORCEMENT</b>	
Designed by <b>W. JEFFREY</b>	Drawn by <b>G. SCHELLEY</b>
Checked by <b>D.C. WILLEY</b> date 7-83	Bridge Design Supervisor <b>R.L. Dooley</b> date 3-83
PROJECT <b>CHESTER</b>	PROJECT NO. <b>BRZ 1442 (8)</b>
Bridge Sheet No. <b></b>	Sheet <b>25</b> of <b>32</b>