

BRIDGE RAILING, HEAVY DUTY
STEEL BEAM TYPE C
12+03 RT. TO 12+28 RT.
12+03 LT. TO 12+33 LT.
Construct Drive
Sta. 11+45 RT.

BEGIN R.O.W. PROJECT
BRZ 1442(8) REV. STA. 11+00 C

M.L. POC 12+00.0
CHAN POT 5+00.0
Δ 84°-43'-30" LT OF
TANG TO CURVE AT
12+00.0
BARRABY, MAYNARD E. &
ELEANOR E.

EXISTING BRIDGE INFORMATION

ABUTMENTS—LAID UP STONE—2.5' THICK
5-12"x6" I BEAMS, POOR CONDITION

NEWTON, WILLIAM V. &
PAULINE F.

GUARD RAIL, HEAVY DUTY STEEL
BEAM WITH WOOD POSTS, TYPE II
11+66 RT. TO 12+03 RT.
12+28 RT. TO 12+55 RT.
11+33 LT. TO 12+00 LT.
12+33 LT. TO 12+70 LT.

| | |
|-----------|--|
| DATE | |
| BY | |
| REVISION | |
| PLAN | |
| NOTE BOOK | |
| NO. | |

| | |
|-----------|--|
| DATE | |
| BY | |
| REVISION | |
| PROFILE | |
| NOTE BOOK | |
| NO. | |

POT 9+09.48
(E.YT. RT. 10)

POT 10+00.0

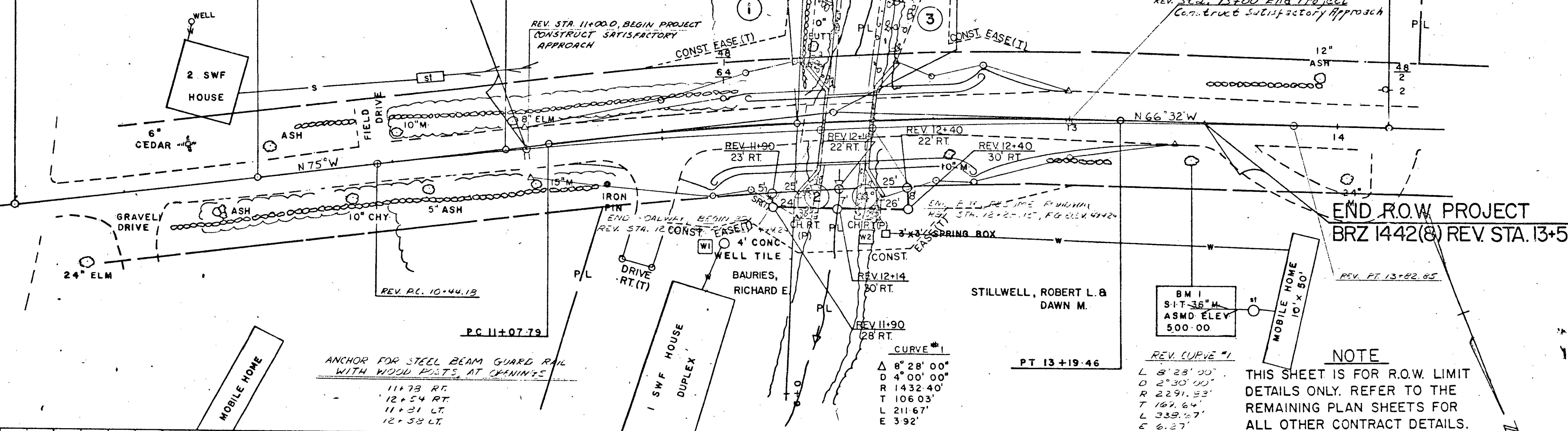
POT 10+92.0

POT 14+19.61

NEWTON
(LOT 21)

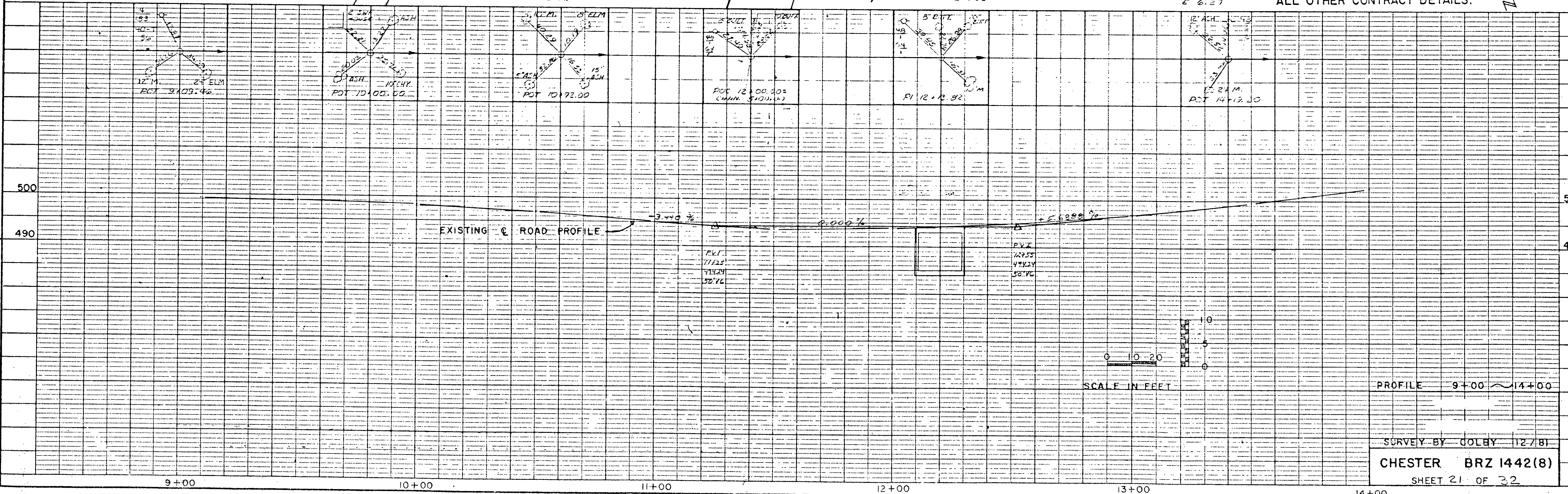
4
183
40-T
56
0

12' M



BM 1
SIT 36" W
ASMD ELEV
500.00

NOTE
THIS SHEET IS FOR R.O.W. LIMIT
DETAILS ONLY. REFER TO THE
REMAINING PLAN SHEETS FOR
ALL OTHER CONTRACT DETAILS.



SURVEY BY COLBY 11/2/81

CHESTER BRZ 1442(8)

SHEET 21 OF 32