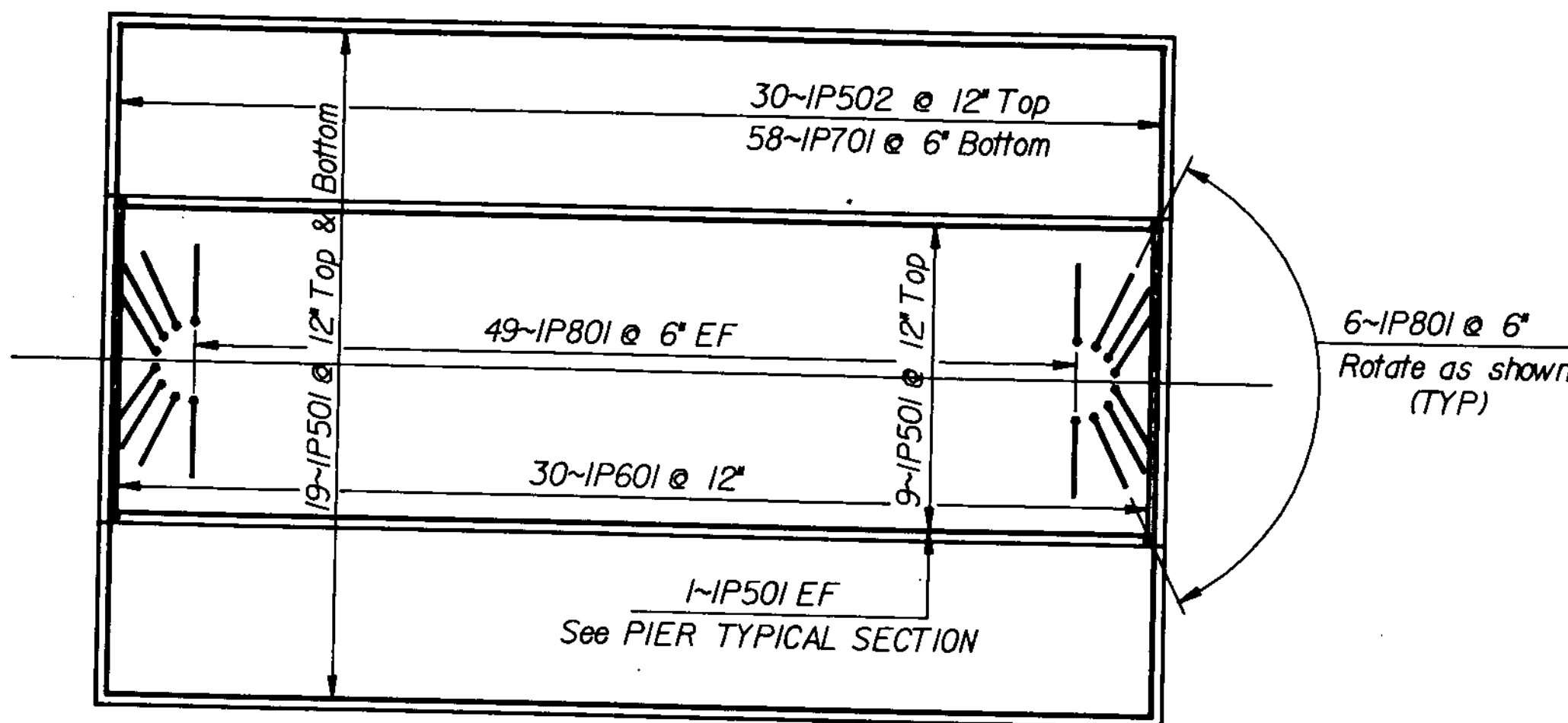
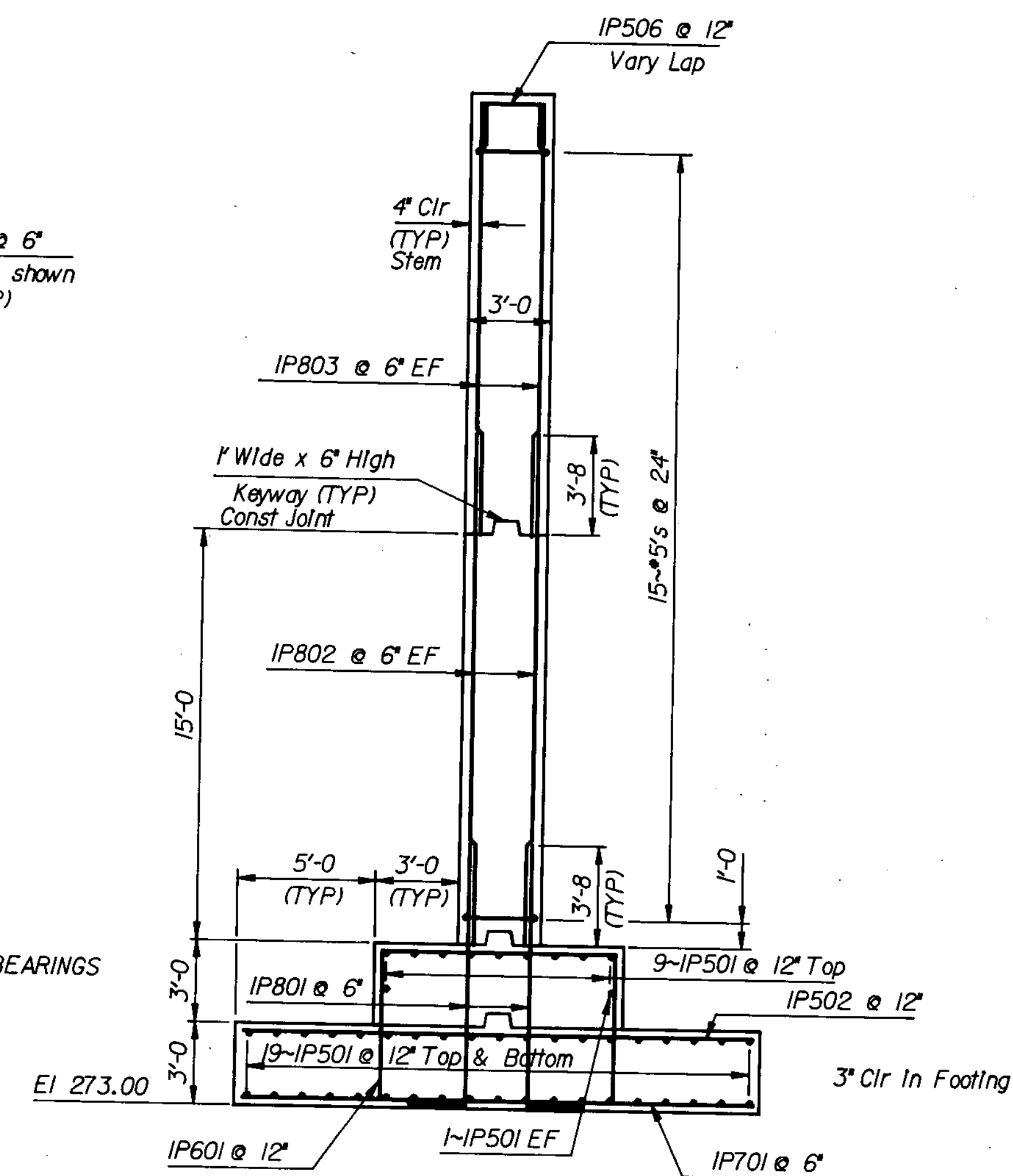


**PIER No 1 PLAN**  
Scale 1/4" = 1'-0"



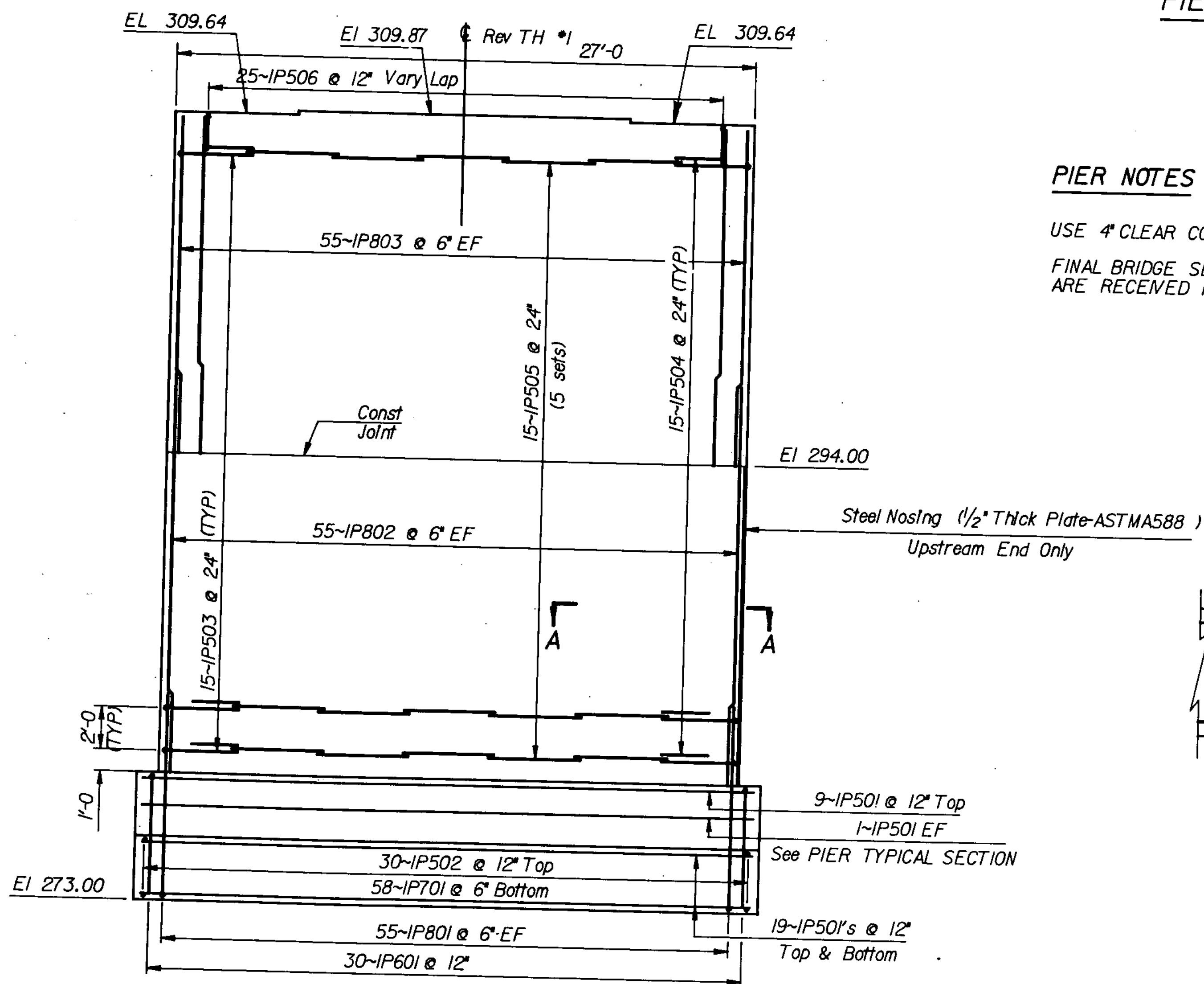
**PIER No 1 FOOTING REINFORCING STEEL**  
Scale 1/4" = 1'-0"



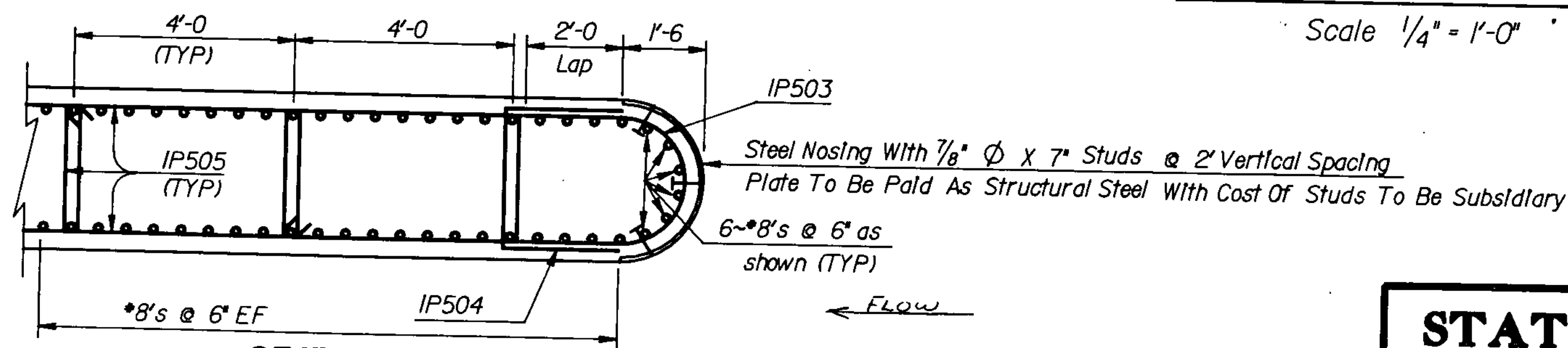
**PIER No 1 TYPICAL SECTION**  
Scale 1/4" = 1'-0"

**PIER NOTES**

USE 4" CLEAR COVER IN STEM AND 3" CLEAR COVER IN FOOTING.  
FINAL BRIDGE SEAT ELEVATIONS WILL BE ADJUSTED WHEN SHOP DRAWINGS FOR THE POT BEARINGS ARE RECEIVED FROM THE FABRICATOR.



**PIER No 1 ELEVATION**  
Scale 1/4" = 1'-0"



**SECTION A-A**  
Scale 1/2" = 1'-0"

<b>STATE OF VERMONT AGENCY OF TRANSPORTATION</b>	
Town of <b>GEORGIA</b>	Bridge No. <b>10</b>
Highway No. <b>TH #1</b>	Log Sta. <b>88+5.0</b>
<b>TH #1 over LAMOILLE RIVER</b>	
<b>PIER #1 DETAILS</b>	
Designed By <b>C.P. WILLIAMS</b>	Drawn By <b>E. BLODGETT</b>
Checked By <b>C.P. WILLIAMS</b>	Bridge Design Supervisor <b>F.W. Balkum</b>
Date <b>11/84</b>	Date <b>2/85</b>
<b>PROJECT GEORGIA</b>	<b>PROJECT NO. BRZ 1448(3)</b>
L.G.C. Info. <b>OSAK 30, 23, 63, 507, 0PR, 15W</b>	
Bridge Sheet No.	Sheet <b>27</b> of <b>61</b>