

ABUTMENT No 1 PILE LAYOUT

Scale 1/4" = 1'-0"

PILING TABLE (HP 12X53)		
LOCATION	NO OF PILES	APPROX. LENGTH
ABUT • 1	20	21'
ABUT • 2	22	31'

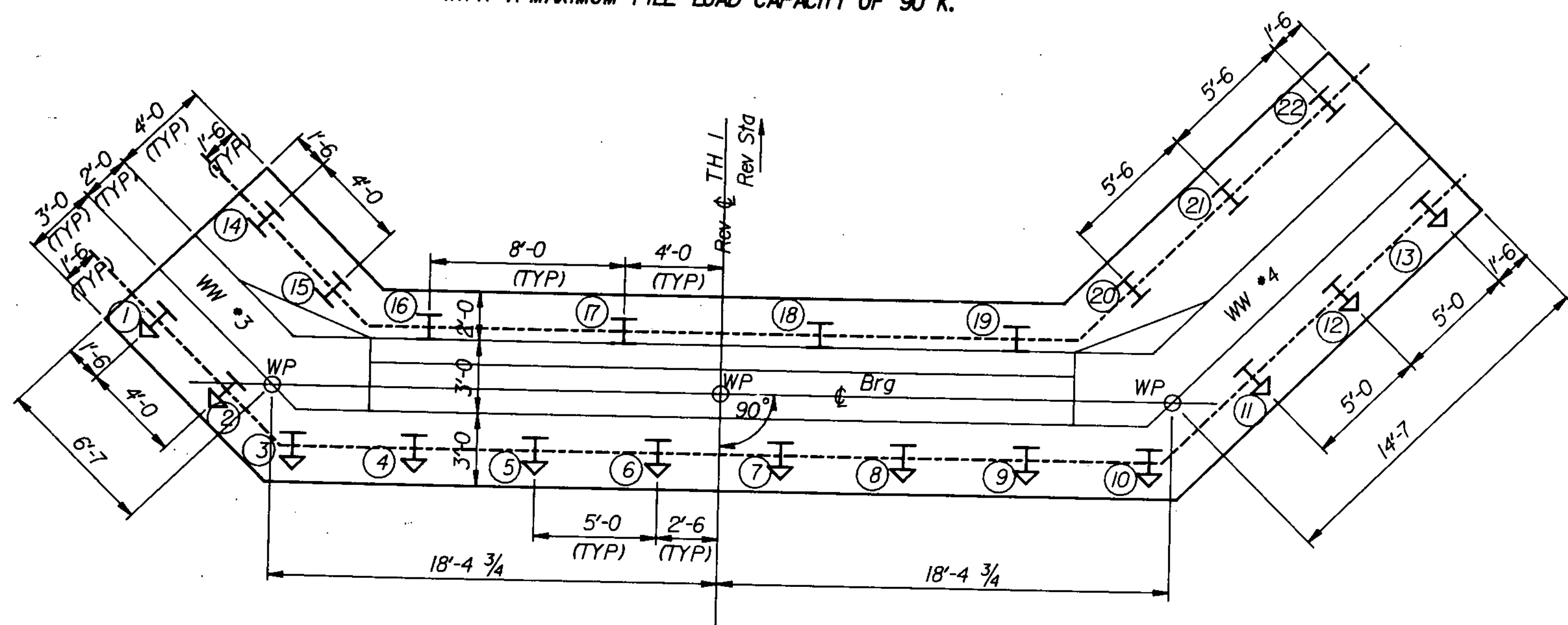
PILES ARE DESIGNED TO BE FRICTION TYPE PILES WITH A MAXIMUM PILE LOAD CAPACITY OF 90 K.

NOTE:

LAST 10' OF DESIGN PILE LENGTH SHALL NOT BE DRIVEN WITH A VIBRATORY HAMMER.

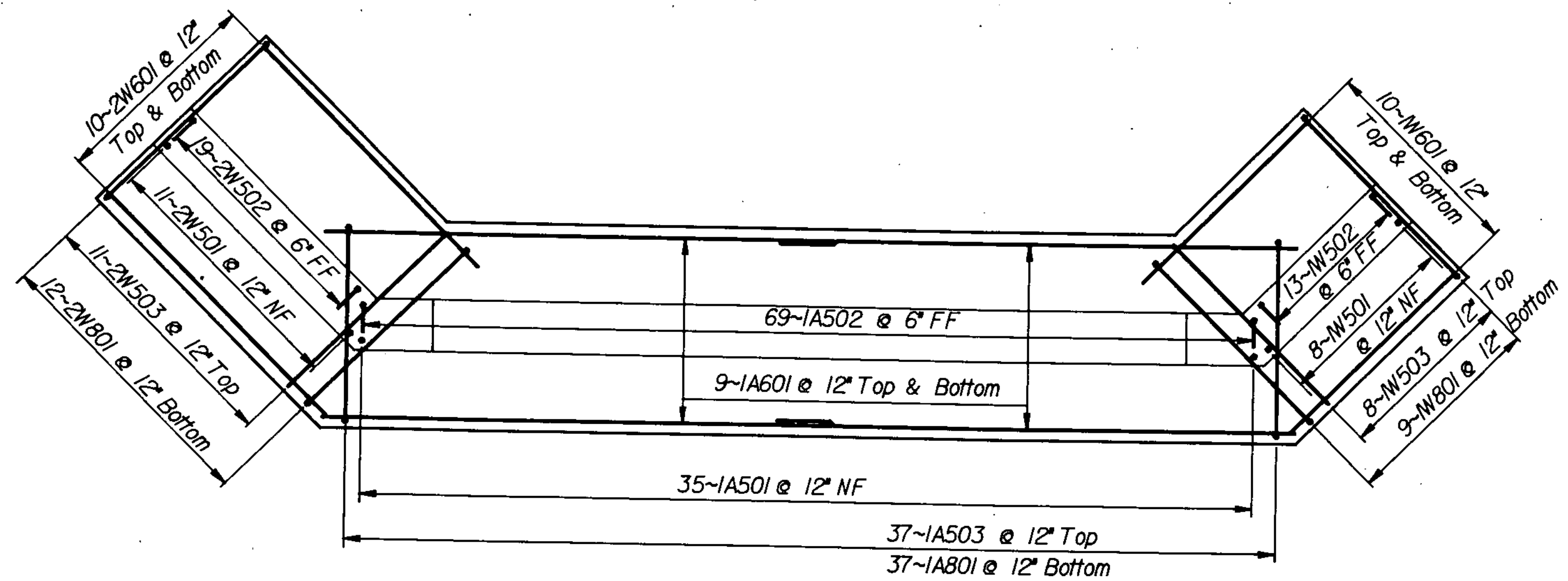
⊥ INDICATES VERTICAL PILE

↘ INDICATES DIRECTION OF BATTERED PILE BATTER TO BE 12 ON 2



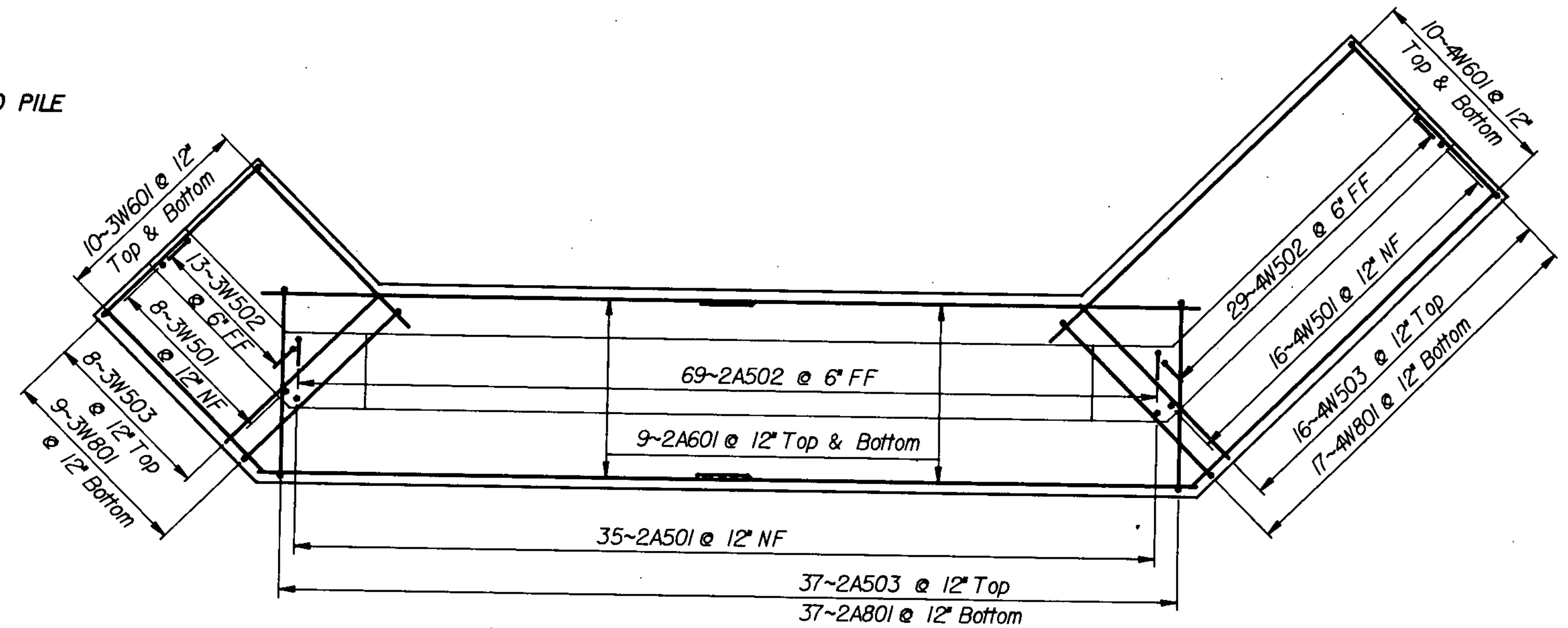
ABUTMENT No 2 PILE LAYOUT

Scale 1/4" = 1'-0"



ABUTMENT No 1 FOOTING REINFORCING PLAN

Scale 1/4" = 1'-0"



ABUTMENT No 2 FOOTING REINFORCING PLAN

Scale 1/4" = 1'-0"

STATE OF VERMONT	
AGENCY OF TRANSPORTATION	
Town Of GEORGIA	Bridge No. 10
Highway No. TH #1	Log Sta. Sta. Rev 88+15.00
TH #1 over LAMOILLE RIVER	
FOOTING REINFORCING PLAN & PILE LAYOUT	
Designed By C. WILLIAMS	Drawn By E. BLODGETT
Checked By C. WILLIAMS	Bridge Design Supervisor F. W. Bolkm
Date 12-84	Date 2/85
PROJECT GEORGIA	PROJECT NO. BRZ 1448(3)
L.G.C. Info. 05A43023638070AB1.DGN	
Bridge Sheet No.	Sheet 26 of 61