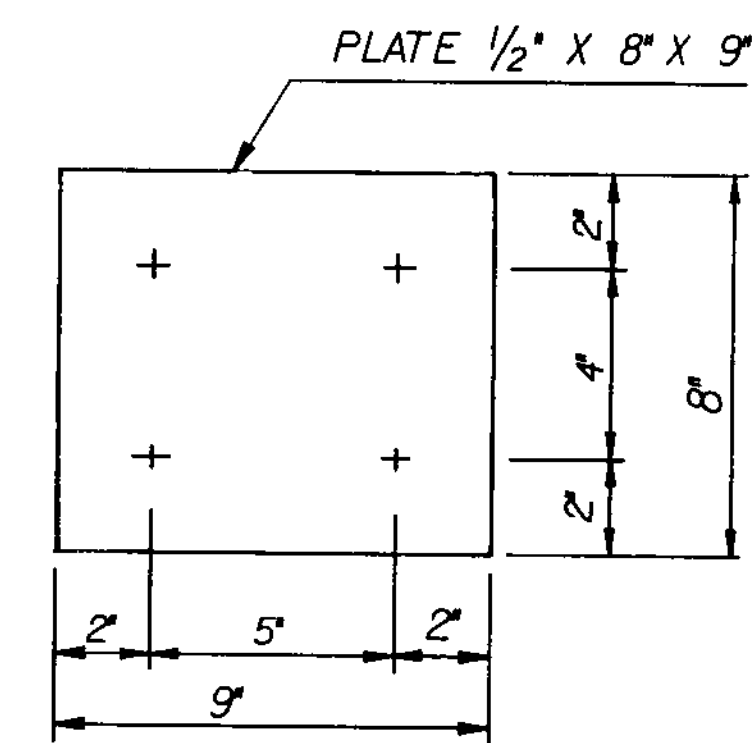


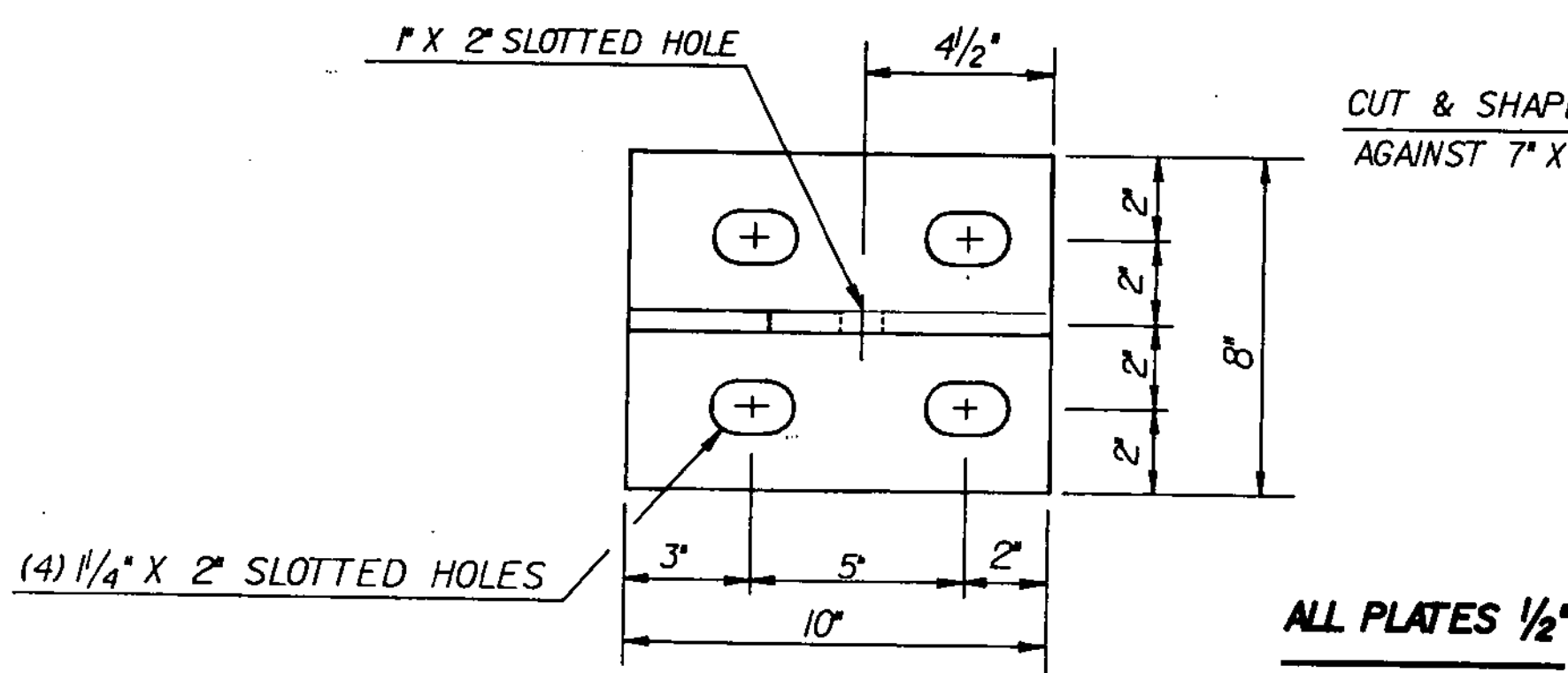
**TYPICAL SECTION BETWEEN GIRDERS AT ABUT #2**

SCALE: 3" = 1'-0"



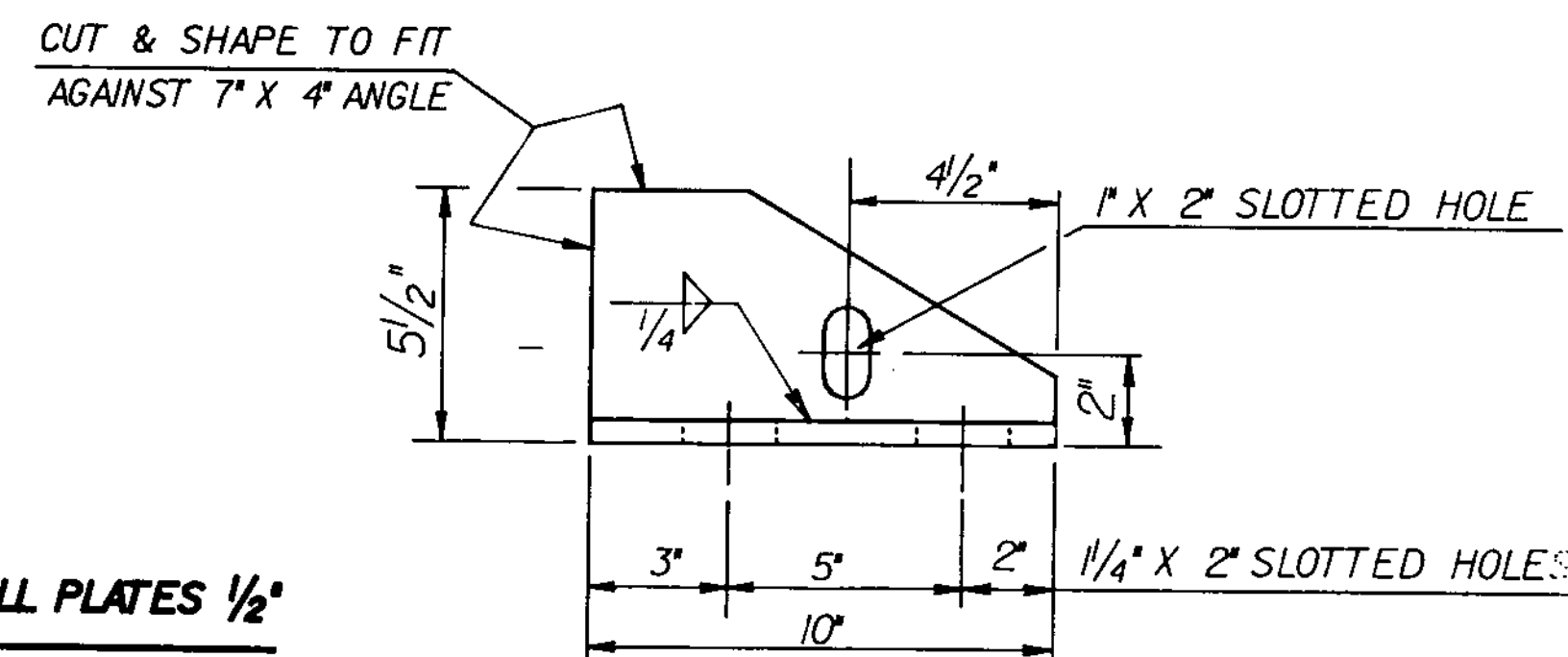
**PLATE PLAN VIEW**

SCALE: 3" = 1'-0"



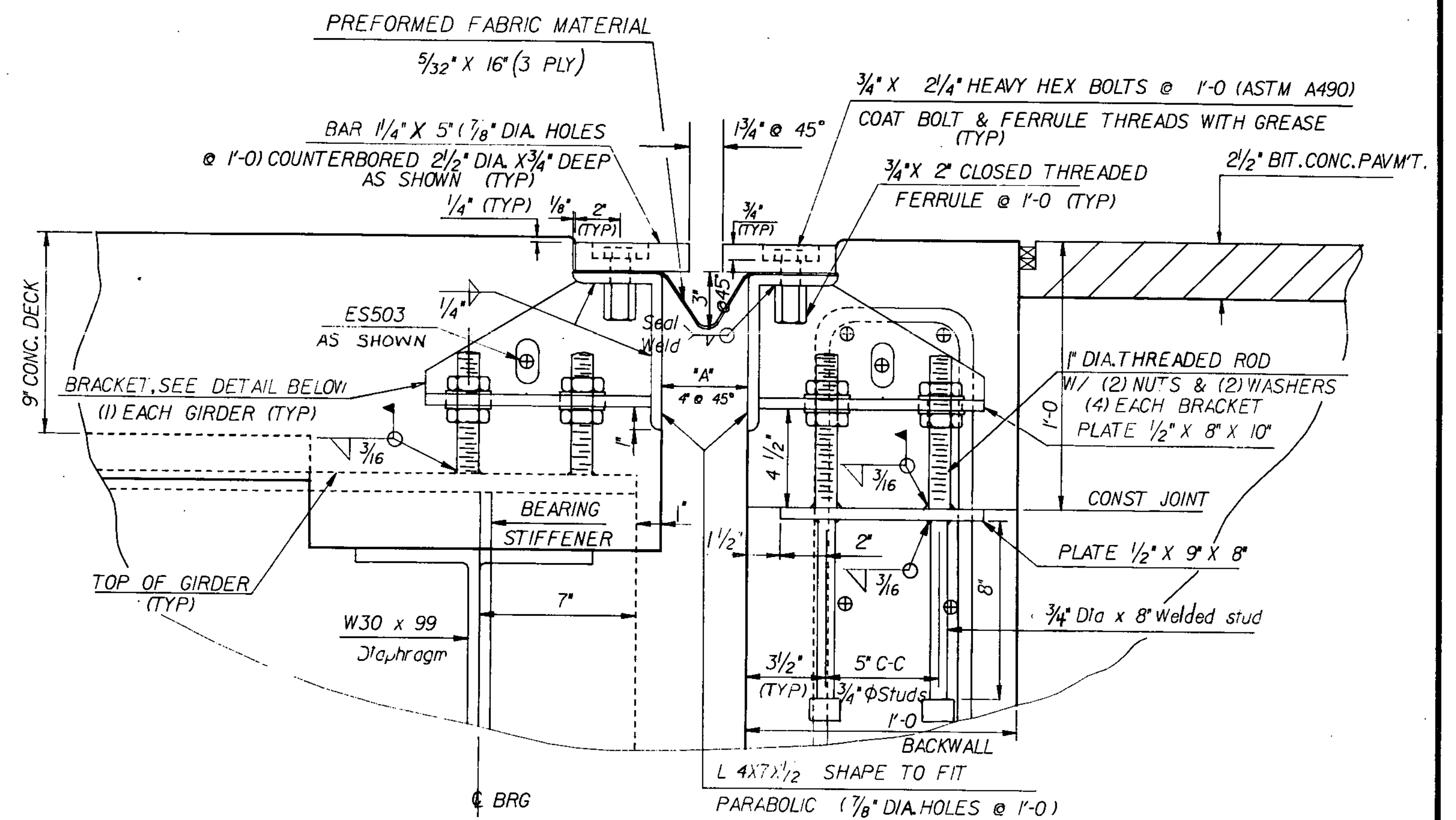
**BRACKET PLAN**

SCALE: 3" = 1'-0"



**BRACKET ELEVATION**

SCALE: 3" = 1'-0"



**TYPICAL SECTION AT GIRDERS AT ABUT #2**

SCALE: 3" = 1'-0"

**NOTES:**

1. PREFORMED FABRIC MATERIAL SHALL BE CONTINUOUS AND SHALL CONFORM TO VT. SPEC. SUBSECTION 707.13
2. BUTYL RUBBER TAPE SHALL CONFORM TO MILITARY SPEC. ML-C-1896A, TYPE II
3. ALL STEEL COMPONENTS USED IN EXPANSION JOINTS SHALL BE A.S.T.M. A36, GALVANIZED, OR METALIZED AFTER FABRICATION AS PER SECTION 731.06, UNLESS OTHERWISE NOTED.
4. COAT CONCRETE CONTACT SURFACES WITH AN EPOXY BONDING COMPOUND MEETING THE REQUIREMENTS OF SUBSECTION 719.03. PAYMENT SHALL BE INCLUDED IN THE UNIT PRICE BID FOR ITEM 516 \*ELASTOMERIC EXPANSION DAMS (3" MOVEMENT).
5. ALTERNATE EXPANSION JOINTS CAPABLE OF PROVIDING A TOTAL MOVEMENT OF 3" MAY BE SUBMITTED FOR APPROVAL TO THE ENGINEER IN LIEU OF THE DESIGN AS DETAILED (OR THE OPTION SHOWN ON SHEET 23.)
6. THE FABRICATOR SHALL SEND DETAILED DRAWINGS OF THE EXPANSION DAM TO THE STRUCTURES DIVISION FOR APPROVAL PRIOR TO FABRICATION.
7. THE ITEM \*ELASTOMERIC EXPANSION DAM (3" MOVEMENT) SHALL INCLUDE IN THE COST PER LINEAR FOOT THE FABRICATION AND ERECTION OF THE COMPLETE JOINT ASSEMBLY INCLUDING ALL STEEL PLATES, ANGLES, WELDED STUDS OR RODS, DRAIN TROUGHS, PREFORMED FABRIC MATERIAL, BUTYL RUBBER TAPE AND ANY OTHER MISCELLANEOUS HARDWARE.
8. THE 1/4" X 5" PLATES SHALL BE FURNISHED IN TWO LENGTHS (SEE EXPANSION JOINT PLAN). THE ANGLES 7" X 4" X 1/2" SHALL BE FURNISHED IN CONTINUOUS LENGTHS.

| AIR TEMP | "A" DISTANCE |
|----------|--------------|
| 0°F      | 4 13/16"     |
| 10°F     | 4 5/8"       |
| 20°F     | 4 7/16"      |
| 30°F     | 4 1/4"       |
| 45°F     | 4"           |
| 60°F     | 3 3/4"       |
| 70°F     | 3 9/16"      |
| 80°F     | 3 3/8"       |
| 90°F     | 3 3/16"      |

**STATE OF VERMONT  
AGENCY OF TRANSPORTATION**

Town Of **GEORGIA** Bridge No. **10**  
 Highway No. **TH #1** Log Sta. **88+15.0**  
**TH #1 over LAMOILLE RIVER**  
**EXPANSION JOINT DETAILS @ ABUT #2**  
 Designed By **C.P. WILLIAMS** Drawn By **E. BLODGETT**  
 Checked By **D. NEWTON** Date **1-85** Bridge Design Supervisor **F.W. BOLKUM** Date **2/85**  
 PROJECT **GEORGIA** PROJECT NO. **BRZ 1448(3)**  
 L.G.C. info. **QSAIL30,23J63B070EXP**  
 Bridge Sheet No. **22** of **61**