

GIRDER CUTOFF & SOLE PLATE DETAILS

Scale 3" = 1'-0"

PIER NO.2

TEMP	'A' DIST	'B' DIST
0°F	7 7/16"	7 3/16"
15°F	7 11/16"	7 5/16"
30°F	7 7/8"	7 1/2"
45°F	8"	7 3/8"
60°F	8 1/8"	7 3/4"
75°F	8 5/16"	7 15/16"
90°F	8 1/16"	8 1/16"

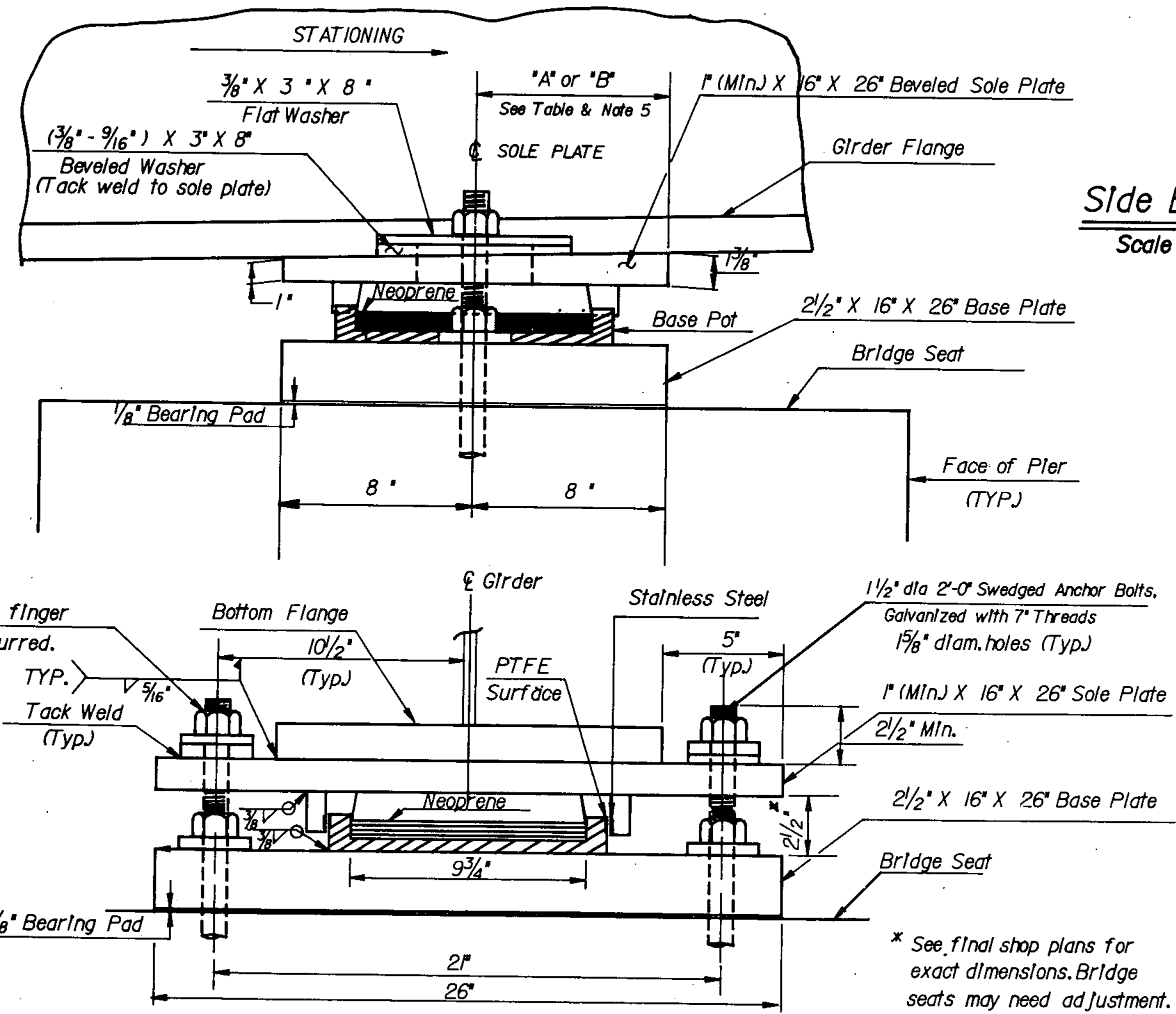
ABUTMENT NO.2

TEMP	'A' DIST	'B' DIST
0°F	3 3/16"	4 3/8"
15°F	3 1/2"	4 1/16"
30°F	3 3/4"	3 3/16"
45°F	3"	3 3/16"
60°F	2 3/4"	3 5/16"
75°F	2 1/2"	3 1/16"
90°F	2 1/8"	2 3/4"

NOTES (Piers 1 & 2)

- Bearing base plates shall be placed on a 1/8" fabric pad as specified in Section 731.01 or 731.02.
- Bearing devices shall be paid for at the unit bid price each for item 506.99, Bearing Device Assembly.
- Design Criteria: A- Unfilled T.F.E. Bearing surface bearing pressure: 3500 p.s.i.
B- Base plates to concrete beam seat bearing pressure: 1000 p.s.i.
C- Rotation capacity: 0.015 radlans (Minimum)
- The manufacturer of the bearing device assembly item 506.99 shall, in addition to the type D certification required in section 731.02, certify that the units supplied are designed to meet the loading requirements indicated below.

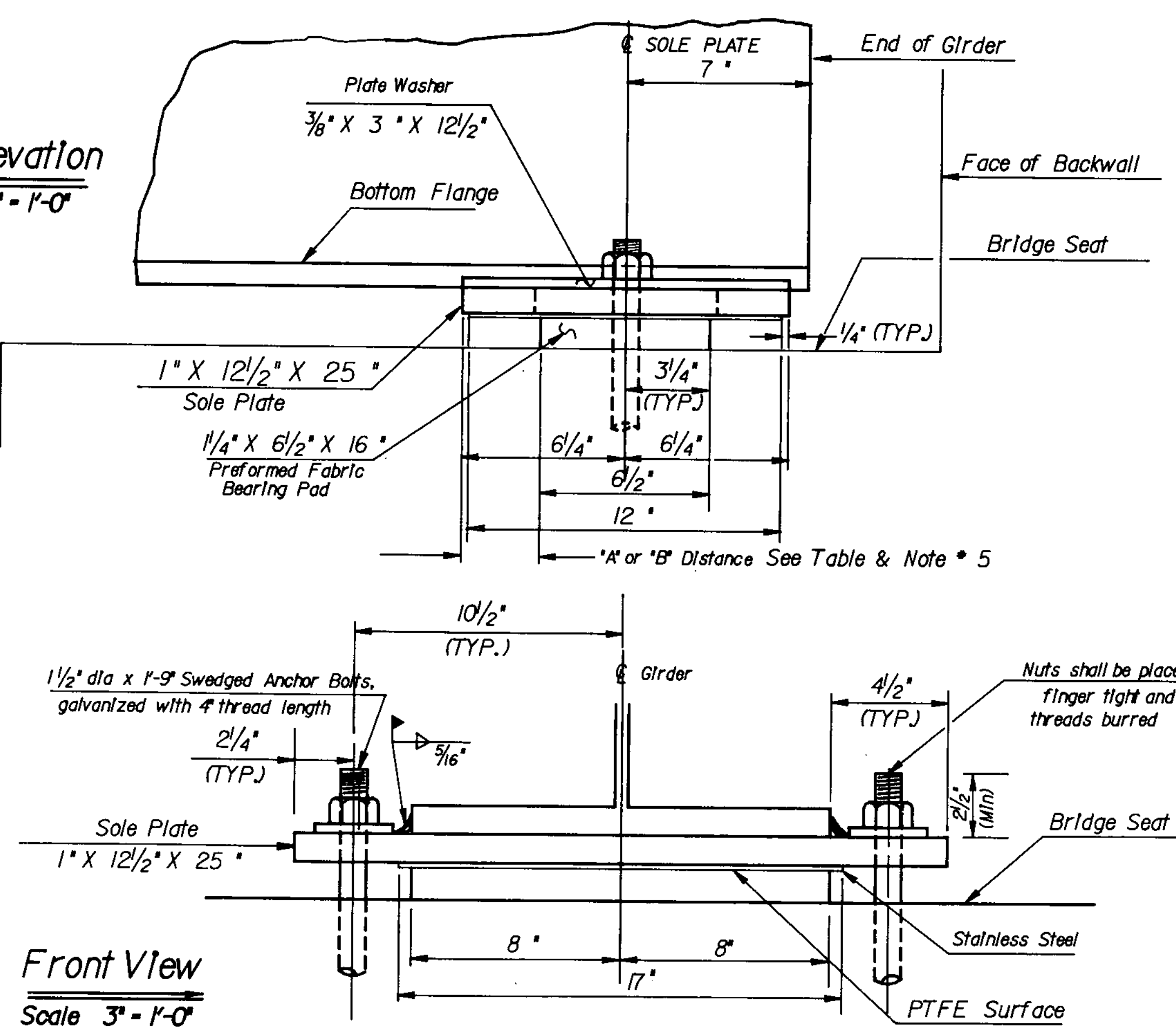
EXPANSION POT BEARING AT PIER NO.2



Side Elevation

Scale 3" = 1'-0"

EXPANSION END AT ABUTMENT NO.2



Front View

Scale 3" = 1'-0"

Expansion

Vertical	253 Kips
Longitudinal	8 Kips
Transverse	6 Kips

Notes (Abutment *2 & Pier *2)

- 'A' distance is the final setting for the bearing pad after the concrete slab, curb, and bridge rail are in place. However, most contractors like to adjust the bearing pad after the structural steel has been erected and before the concrete deck is poured. Therefore, 'B' distance is listed for contractors who set bearing pad before pouring deck. The difference, 3/8 inches, at Pier No. 2, and 9/16 inches, at Abutment No. 2, is the elongation in the bottom flange due to dead load deflection caused by the concrete slab, curbs, and bridge rail. This difference is a theoretical distance and should not be considered as a final setting. The final 'A' distance, as shown in the table, must be reached within 1/8 inch ±.
- See Notes on Sheet 20

EXPANSION BEARING DETAILS AT PIER NO.2

EXPANSION BEARING DETAILS AT ABUTMENT NO.2

STATE OF VERMONT AGENCY OF TRANSPORTATION

Town Of	GEORGIA	Bridge No.	10
Highway No.	TOWN HIGHWAY NO.1	Log Sta.	88 + 15.00
TOWN HIGHWAY NO.1 OVER THE LAMOLLE RIVER			
BEARING DEVICE DETAILS FOR ABUTMENT NO.2 & PIER NO.2			
Designed By	C.P. WILLIAMS	Drawn By	D. NEWTON & B. RYAN
Checked By	G.S. ROGERS	Date	JAN. 1985
PROJECT		BRZ 1448(3)	BRZ 1448(3)
L.G.C. Info. USA 230,327,638/08/BRG/DBN			
Bridge Sheet No.	Sheet		21 of 61