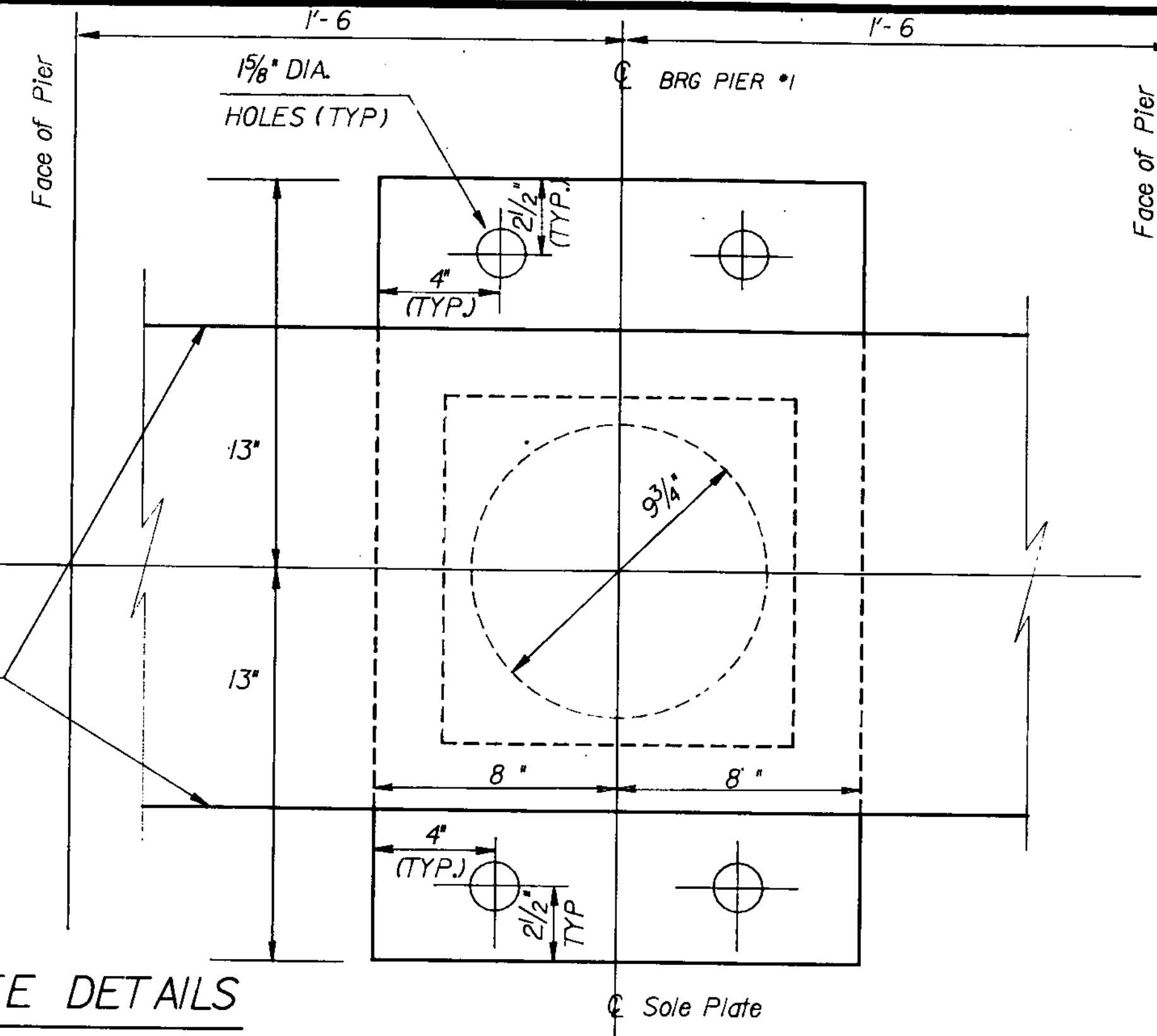


GIRDER CUTOFF & SOLE PLATE DETAILS  
Scale 3" = 1'-0"



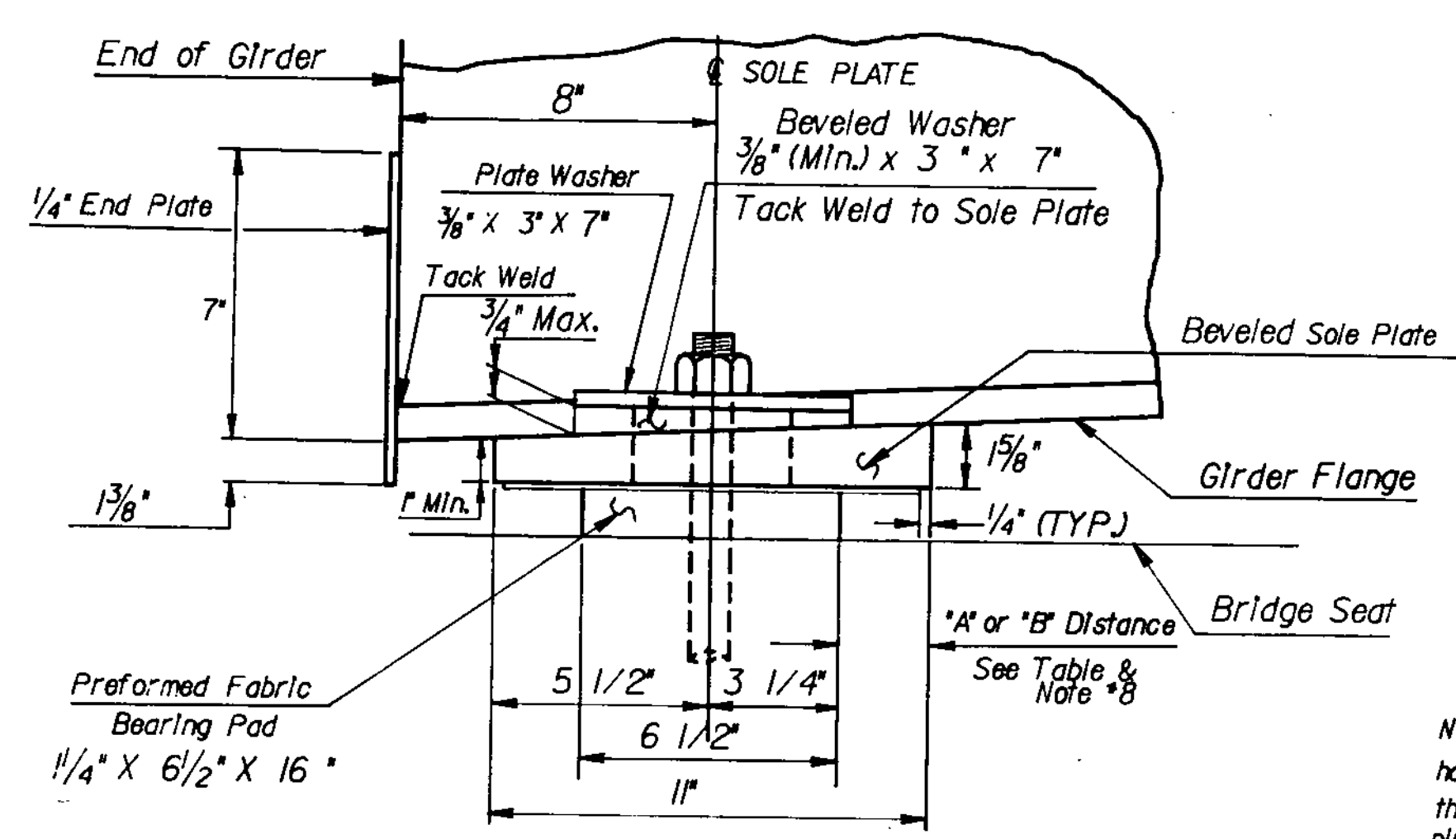
FIXED POT BEARING AT PIER NO. 1  
Scale 3" = 1'-0"

ABUTMENT NO. 1

TEMP	"A" DIST	"B" DIST
0°F	2 7/16"	2 3/4"
15°F	2 1/2"	2 11/16"
30°F	2 3/8"	2 7/16"
45°F	2 1/4"	2 1/16"
60°F	2 1/8"	2 1/16"
75°F	2"	2 1/16"
90°F	1 15/16"	2"

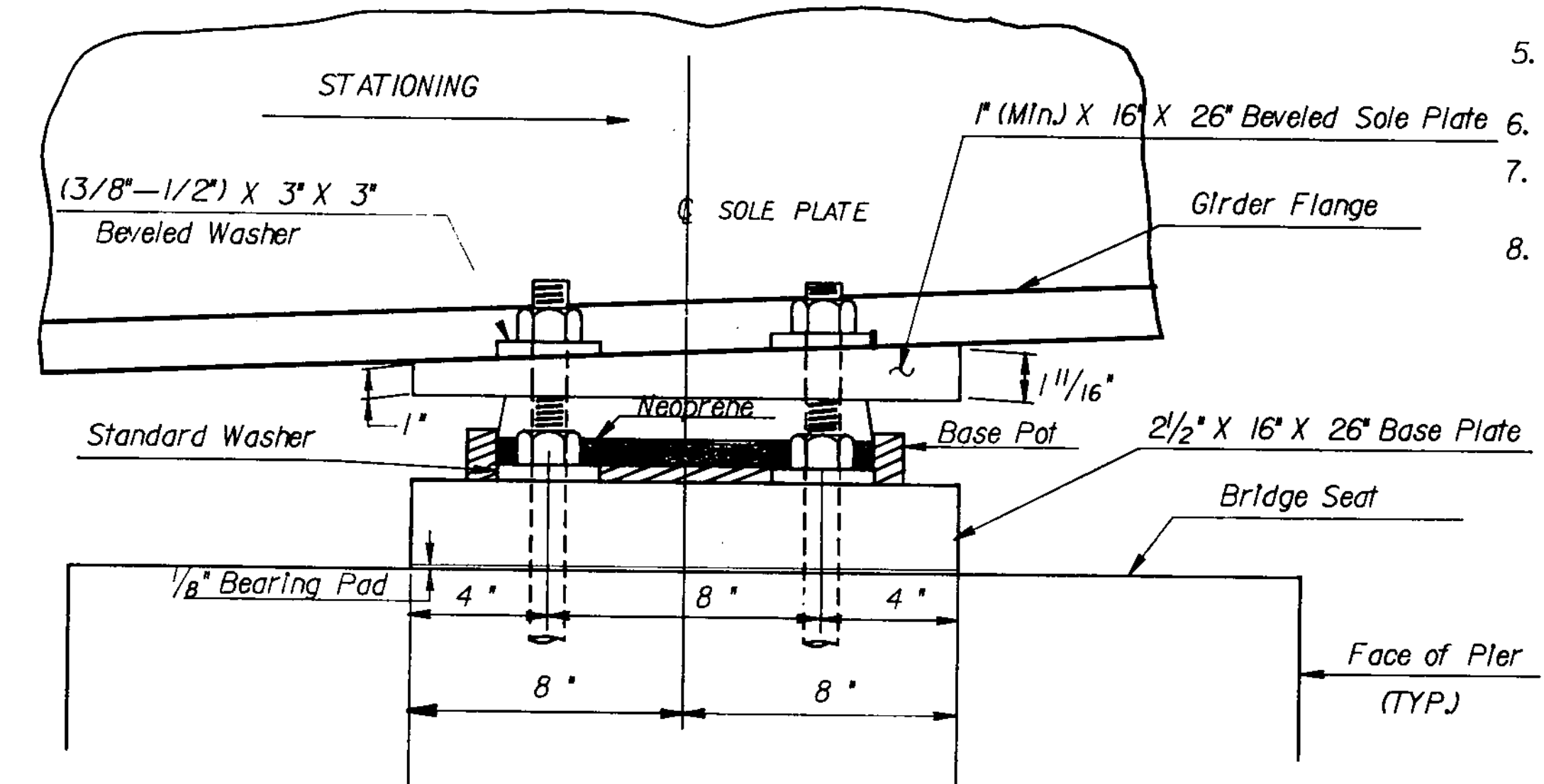
SOLE PLATE & BEARING DETAIL NOTES

1. THE EXPANSION BEARINGS SHALL CONFORM TO SUBSECTION 731.
2. FIXED BEARINGS SHALL CONFORM TO ALL APPLICABLE SECTIONS OF SUBSECTION 731 (OMIT TFE & STAINLESS STEEL).
3. BEARINGS SHALL BE PAID FOR UNDER THE ITEM "BEARING DEVICE ASSEMBLY".
4. SHOP DRAWINGS CONFORMING TO SUBSECTION 506.04 MUST BE SUBMITTED, AND INCLUDE THE WELDING PROCEDURE IF THE STAINLESS STEEL PLATE IS GOING TO BE WELDED TO THE SOLE PLATE, OR THE BONDING PROCEDURE IF THE STAINLESS STEEL PLATE IS BONDED TO THE SOLE PLATE.
5. SOLE PLATES AND WASHERS ARE TO BE GALVANIZED OR METALIZED AS PER GENERAL SPECIAL PROVISION 731.06 FOR THIS PROJECT.
6. THE CONCRETE SURFACE UNDER THE BEARINGS SHALL BE LEVEL.
7. SEE STANDARD DRAWING SCB-D9-71 DETAIL "A" FOR ADDITIONAL DETAILS FOR BLOCKING OUT THE BEARINGS IN THE CURTAIN WALLS.
8. "A" DISTANCE IS THE FINAL SETTING FOR THE BEARING PAD AFTER THE CONCRETE SLAB, CURBS, AND BRIDGE RAIL ARE IN PLACE. HOWEVER, MOST CONTRACTORS LIKE TO ADJUST THE BEARING PAD AFTER THE STRUCTURAL STEEL HAS BEEN ERECTED AND BEFORE THE CONCRETE DECK IS POURED. THEREFORE, "B" DISTANCE IS LISTED FOR CONTRACTORS WHO SET BEARING PAD BEFORE POURING DECK. THE DIFFERENCE, 3/16 INCHES AT ABUTMENT NO. 1, IS THE ELONGATION IN THE BOTTOM FLANGE DUE TO DEAD LOAD DEFLECTION CAUSED BY THE CONCRETE SLAB, CURBS, AND BRIDGE RAIL. THIS DIFFERENCE IS A THEORETICAL DISTANCE AND SHOULD NOT BE CONSIDERED AS A FINAL SETTING. THE FINAL "A" DISTANCE, AS SHOWN IN THE TABLE, MUST BE REACHED WITHIN 1/8 INCH ±.
9. ALL STEEL REQUIRED IN THE BEARINGS SHALL BE ASTM A-36.
10. SEE NOTES ON SHEET 21.

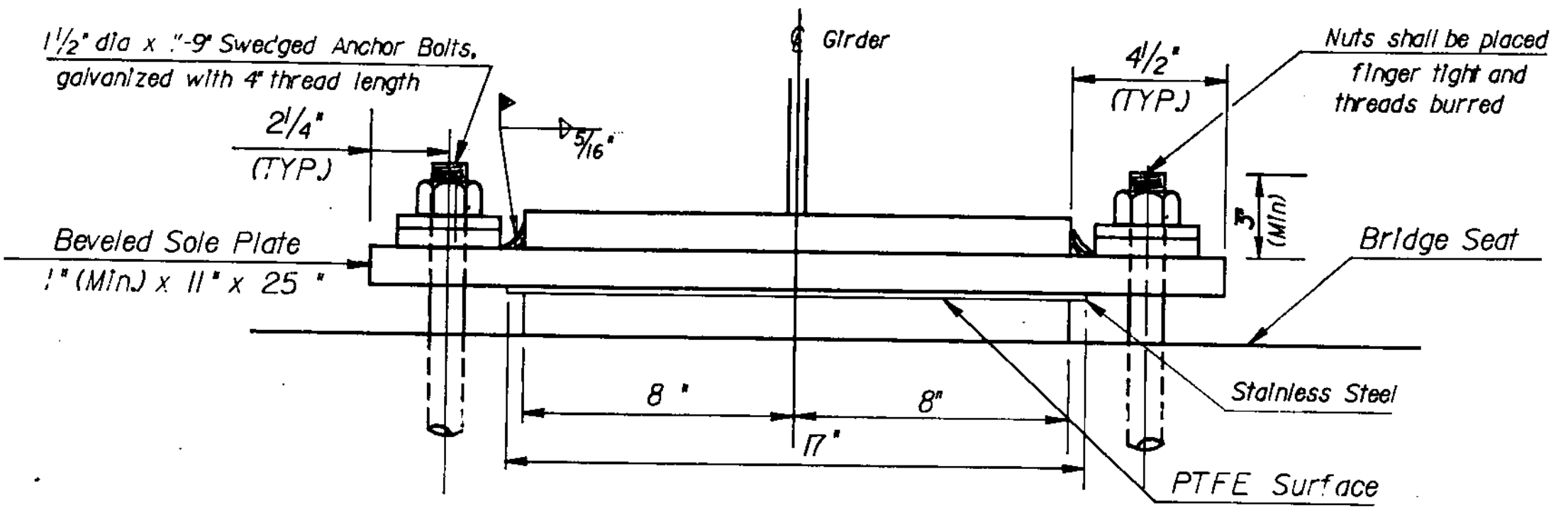


EXPANSION END AT ABUTMENT NO. 1  
Scale 3" = 1'-0"

Side Elevation  
Scale 3" = 1'-0"

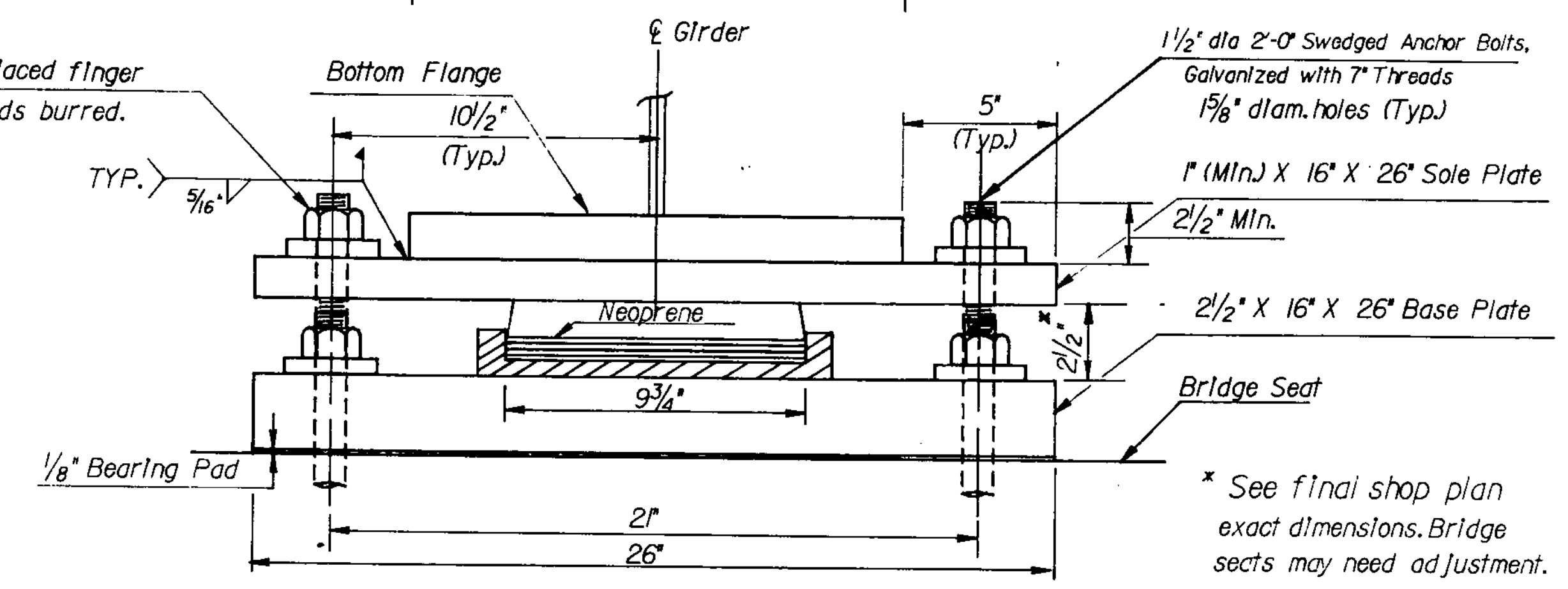


FIXED BEARING DETAILS AT PIER NO. 1  
Scale 3" = 1'-0"



EXPANSION BEARING DETAILS AT ABUTMENT NO. 1  
Scale 3" = 1'-0"

Front View  
Scale 3" = 1'-0"



FIXED BEARING DETAILS AT PIER NO. 1  
Scale 3" = 1'-0"

**STATE OF VERMONT**  
**AGENCY OF TRANSPORTATION**

Town Of **GEORGIA** Bridge No. **10**

Highway No. **TOWN HIGHWAY NO. 1** Log Sta. **88 + 15.00**

**TOWN HIGHWAY NO. 1 OVER THE LAMOILLE RIVER**

BEARING DEVICE DETAILS FOR ABUTMENT NO. 1 & PIER NO. 1

Designed By **C.P. WILLIAMS** Drawn By **M. RYAN & D. NEWTON**

Checked By **G. S. ROGERS** Date **JAN. 1985** Bridge Design Supervisor **F. W. Bolkum** Date **2/85**

PROJECT **GEORGIA** PROJECT NO. **BRZ 1448(3)**

I.G.C. Info. **USA/130.32/GEORGIA/DGN**

Bridge Sheet No. **20** of **61**