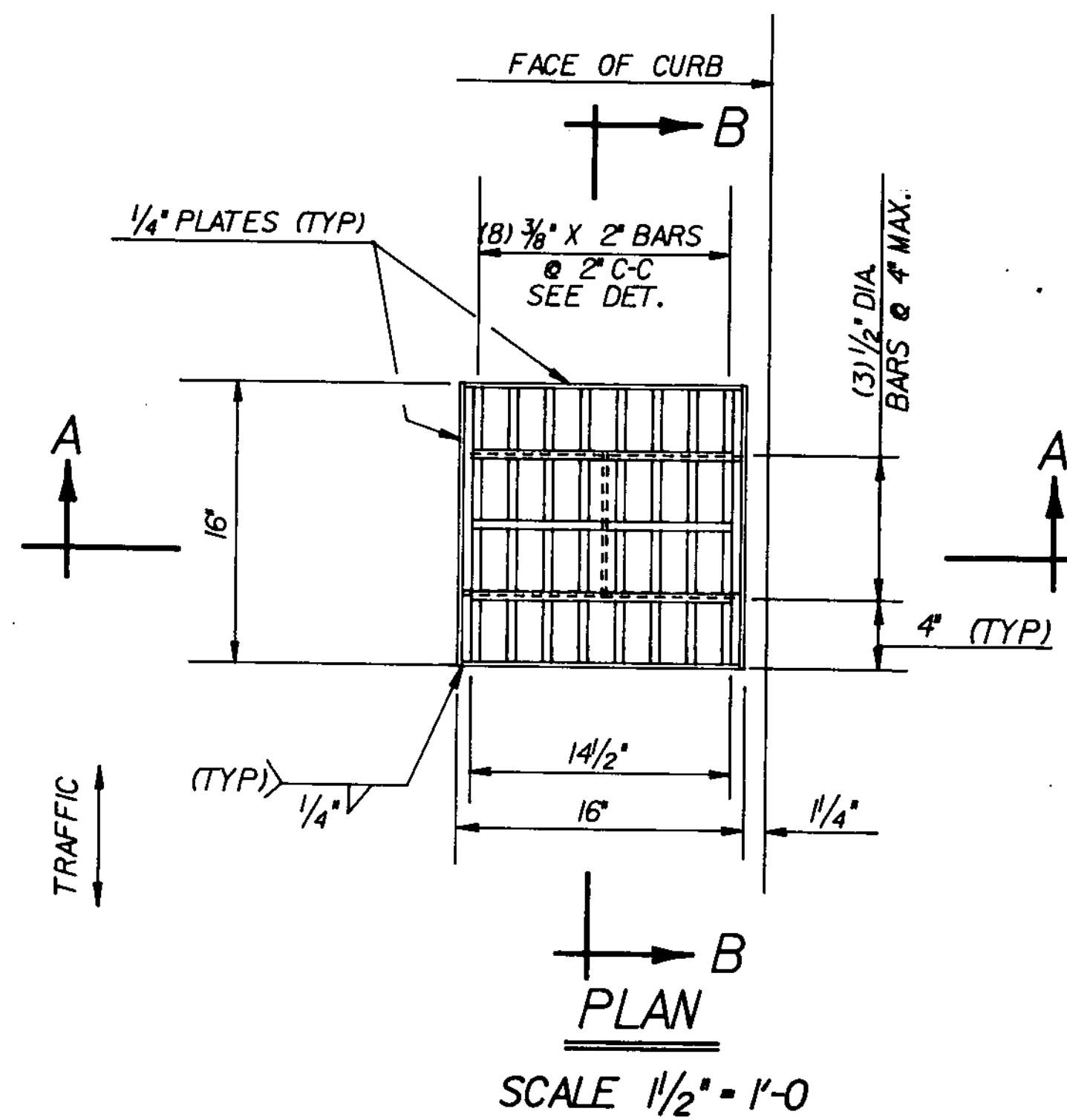
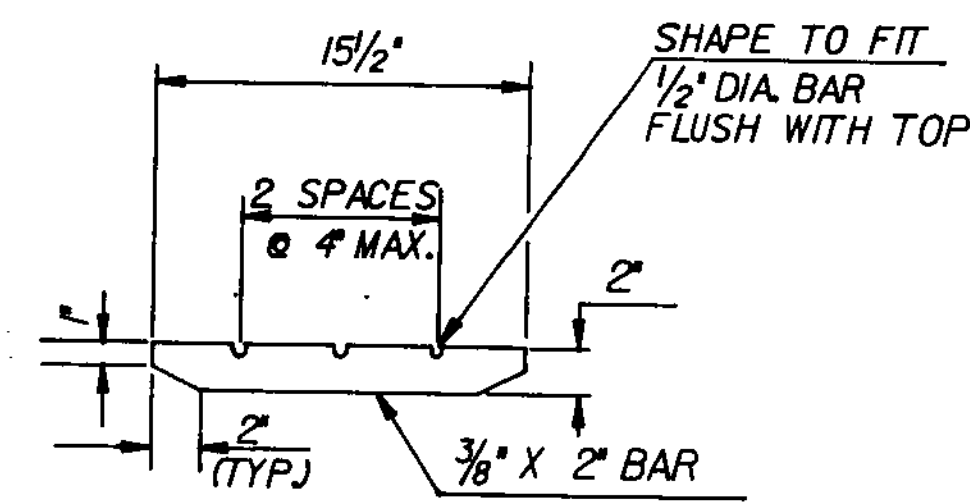


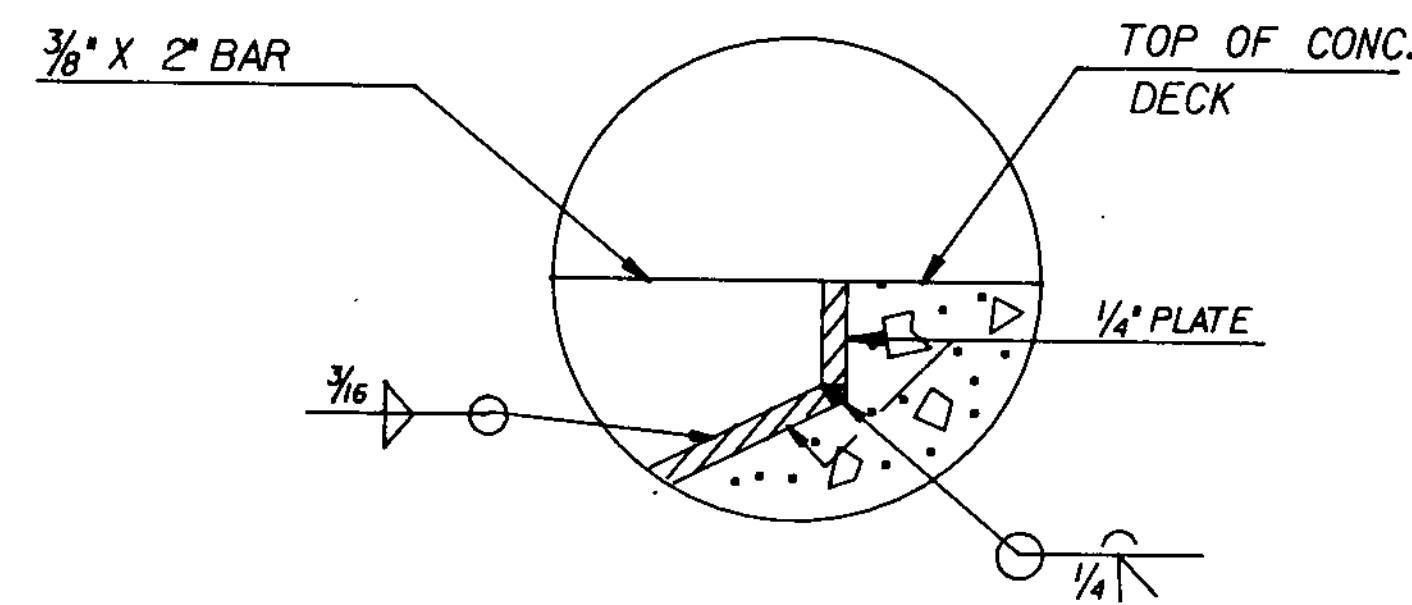
**SECTION B-B**  
SCALE: 1/2" = 1'-0"



**PLAN**  
SCALE 1/2" = 1'-0"



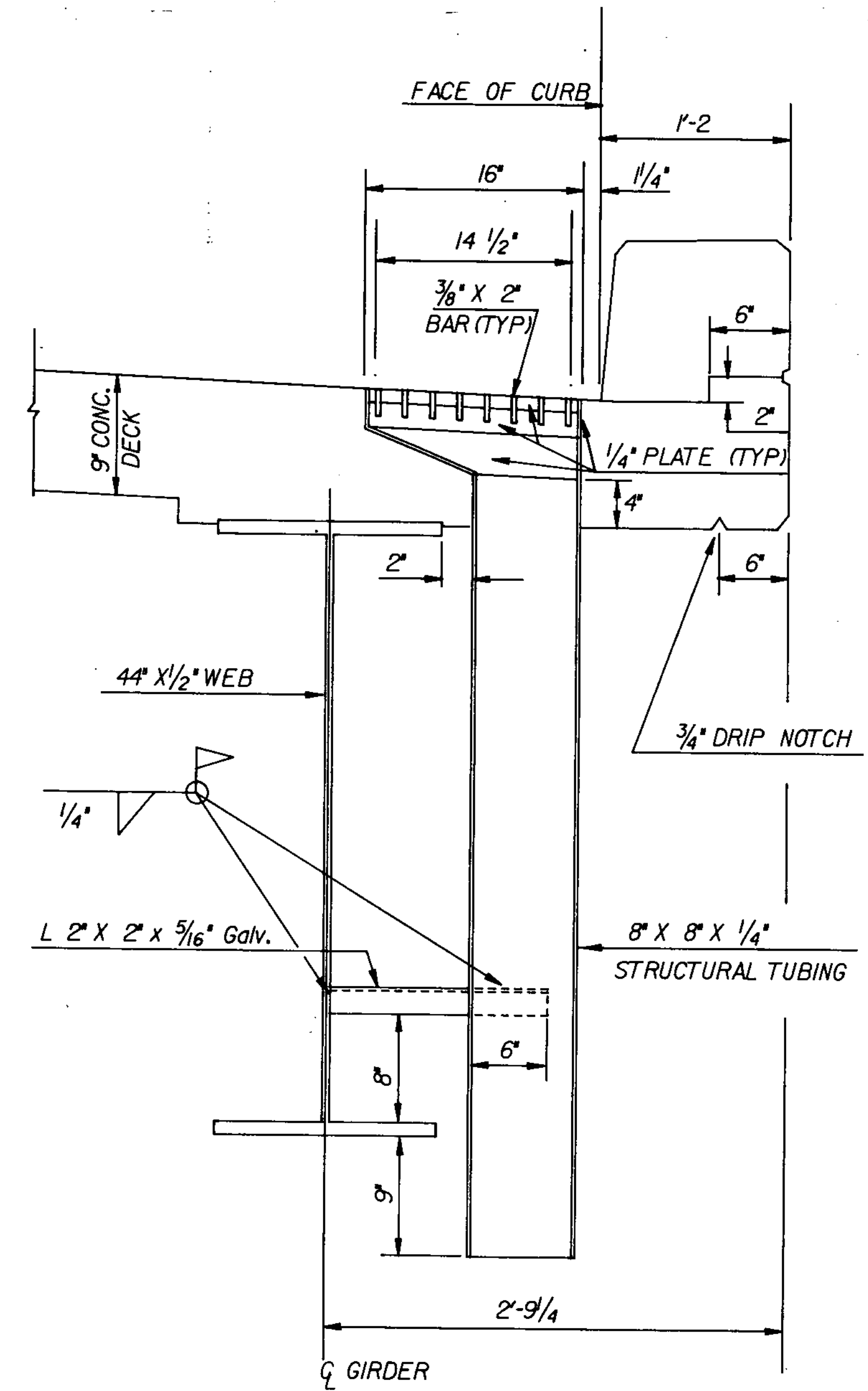
**BAR DETAIL FOR GRATE**  
SCALE: 1/2" = 1'-0"



**DETAIL 'C'**  
NTS

**NOTES**

1. HOLLOW STRUCTURAL STEEL TUBING SHALL CONFORM TO ASTM A-500 OR A-501.
2. ALL PLATES, BARS AND ANGLES SHALL CONFORM TO ASTM A-36.
3. ALL SCUPPERS SHALL BE GALVANIZED IN ACCORDANCE WITH ASTM A-123 AFTER FABRICATION.
4. THE TOP SURFACE OF SCUPPER SHALL BE SLOPED TO MATCH ROADWAY SLOPE AND GRADE.
5. THE BAR AND GRATE SECTION MAY BE PREFABRICATED PROVIDING THE GEOMETRY AND SECTION PROPERTIES ARE EQUIVALENT TO THE DETAILS SHOWN.
6. SEE SHEET 17 FOR SCUPPER LOCATIONS.
7. COAT CONCRETE CONTACT SURFACES OF SCUPPER WITH AN EPOXY BONDING COMPOUND MEETING THE REQUIREMENTS OF SUBSECTION 719.03.  
PAYMENT SHALL BE SUBSIDIARY TO THE UNIT PRICE BID FOR ITEM 506.91, STRUCTURAL STEEL (PLATE GIRDER).



**SECTION A-A**  
SCALE: 1/2" = 1'-0"

STATE OF VERMONT AGENCY OF TRANSPORTATION			
Town Of	GEORGIA	Bridge No.	10
Highway No.	TH #1	Log Sta.	
		Rev Sta.	88+5.0
TH #1 OVER LAMOILLE RIVER			
SCUPPER DETAILS			
Designed By	G. ROGERS	Drawn By	B. SCHILLEY
Checked By	G. ROGERS	Date	12-84
		Bridge Design Supervisor	F.W. Bolkom
PROJECT	GEORGIA	PROJECT NO.	BRZ 1448 (3)
L.C. Info. QSAH 30.33763B070SCU			
Bridge Sheet No.		Sheet	19 of 61