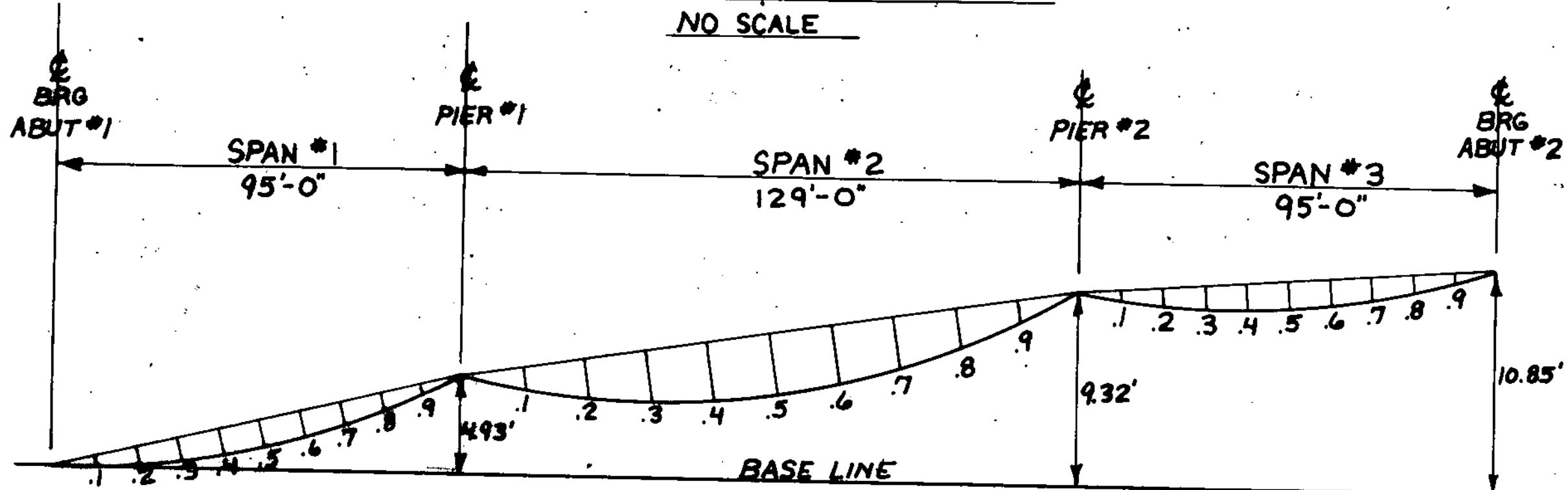


SPAN NO.	1	2	3	4	5	6	7	8	9
1	1%	2%	3%	3%	3%	3%	2%	1%	1%
2	1%	3%	5%	6%	7%	6%	5%	3%	1%
3	1%	1%	2%	3%	3%	3%	2%	1%	1%

CAMBER IN INCHES. DIMENSIONS SHOWN ARE PERPENDICULAR TO CHORDS BETWEEN SUPPORTS.

**CAMBER DIAGRAM**

NO SCALE



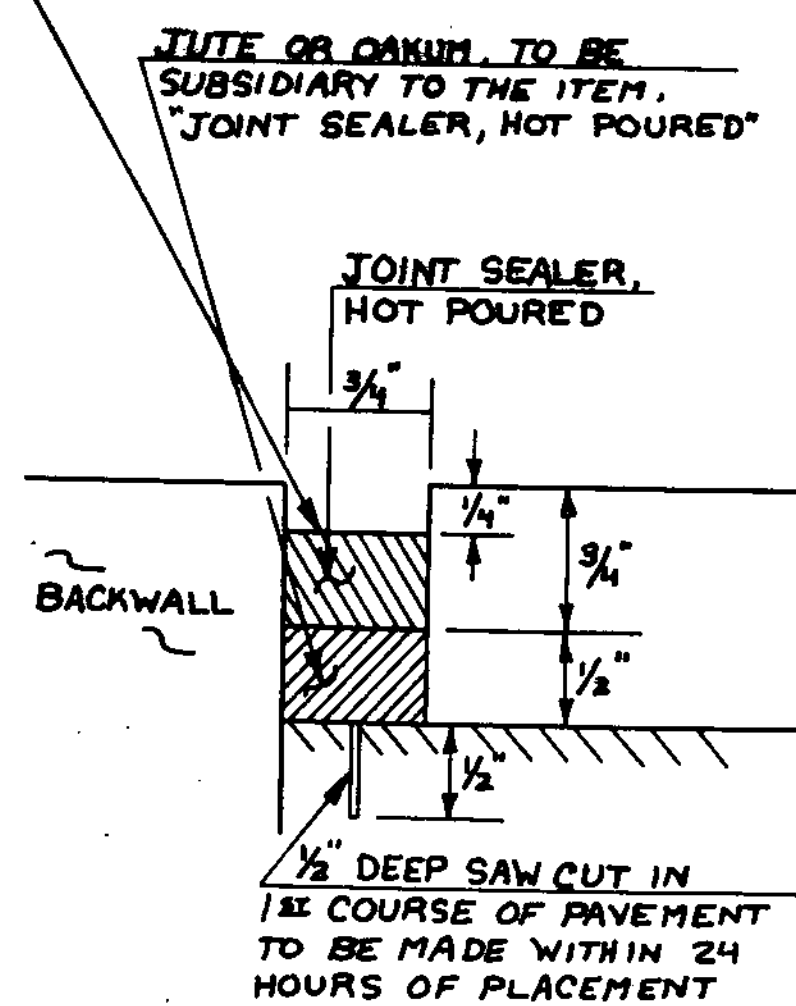
SPAN NO.	1	2	3	4	5	6	7	8	9
1	3/8"	1 1/4"	1 1/4"	1 1/4"	1 1/4"	1 1/4"	1 1/4"	1/2"	0
2	3/8"	1 1/4"	2 1/4"	2 1/4"	3"	2 1/4"	2 1/4"	1 1/4"	3/8"
3	0	1/4"	3/8"	1 1/4"	1 1/4"	1 1/4"	1 1/4"	1 1/4"	3/8"

DEFLECTIONS IN INCHES

**DEAD LOAD DEFLECTION DIAGRAM**

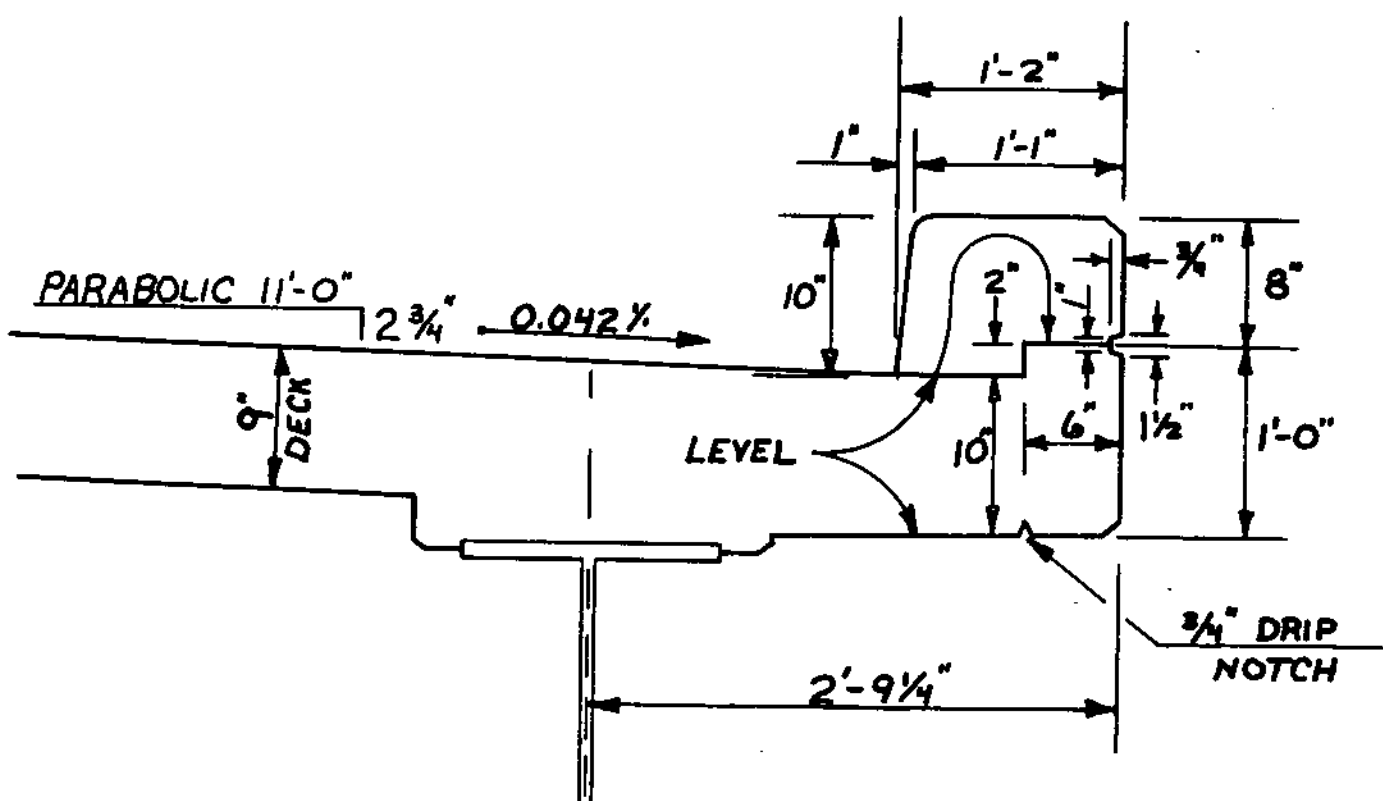
NO SCALE

3/4" WIDE x 1 1/2" DEEP SAW CUT IN 2<sup>ND</sup> COURSE OF PAVEMENT TO BE MADE WITHIN 24 HOURS OF PLACEMENT.



**JOINT SEALER DETAIL**

1" = 1"

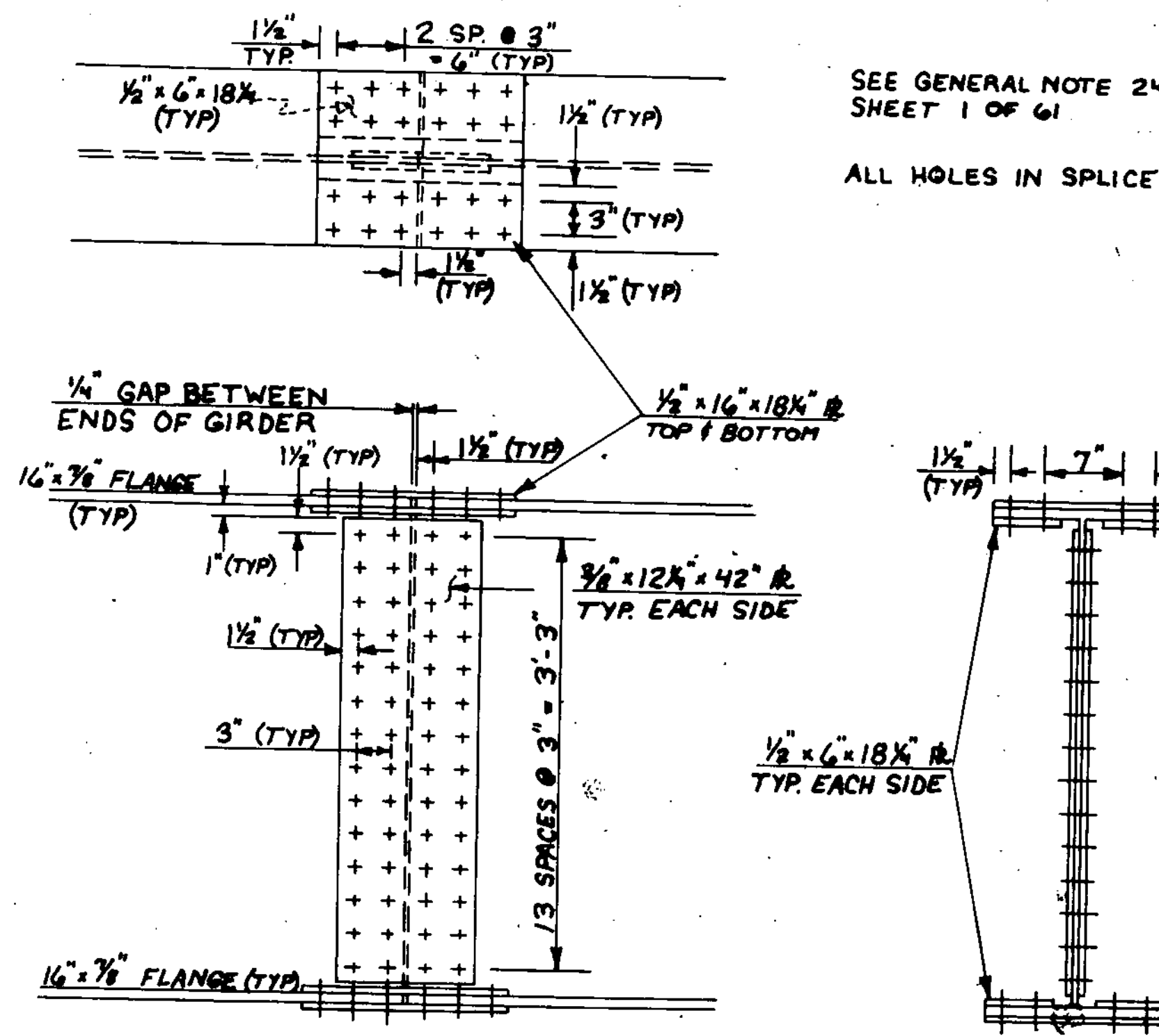


**CURB DETAIL**

1" = 1'-0"

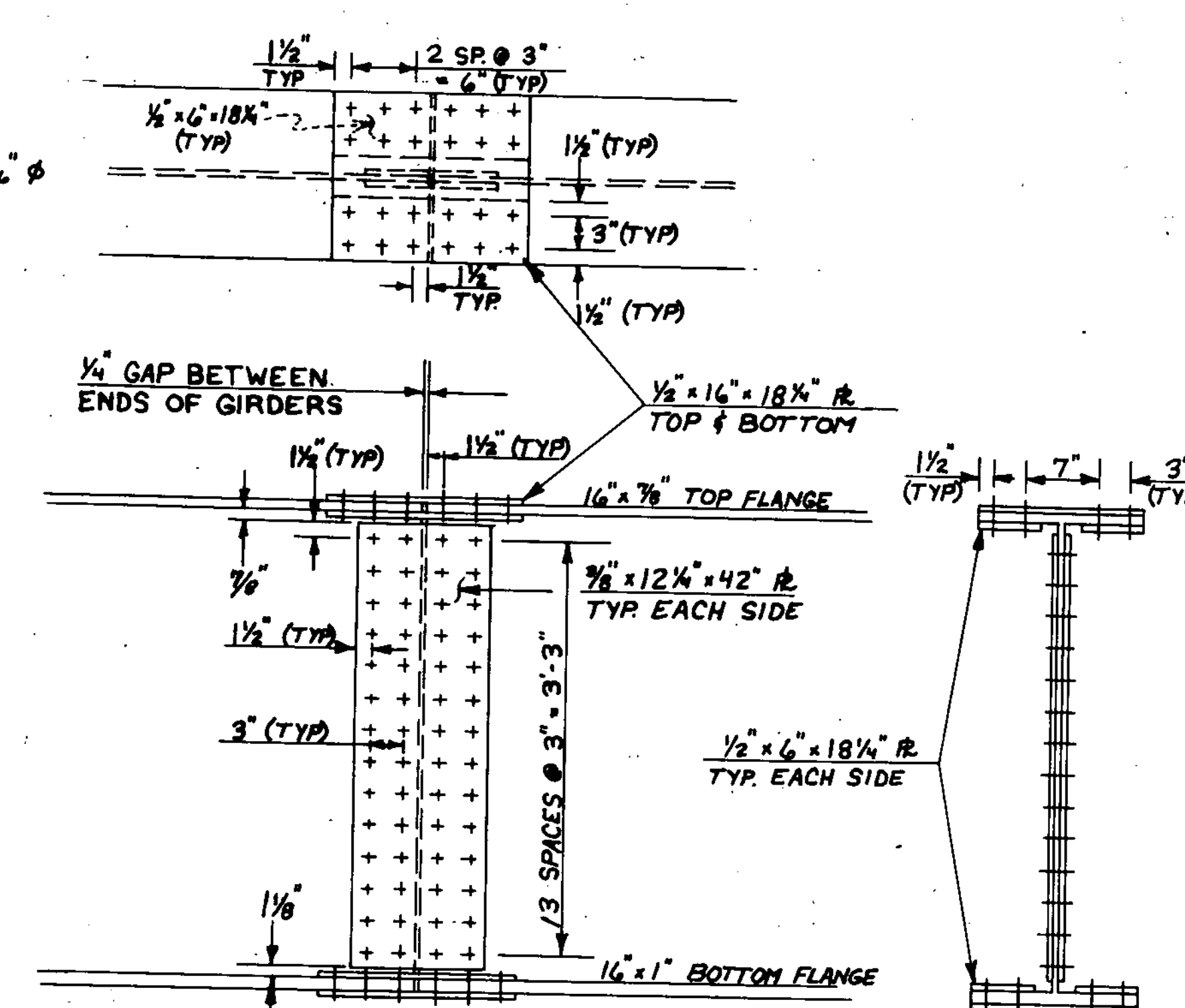
**CAMBER NOTES**

- LIVE LOAD DEFLECTION - SPAN #1 = 3/4", SPAN #2 = 1 1/2", SPAN #3 = 3/4"
- DEAD LOAD DEFLECTION (AS SHOWN) IS DUE TO GIRDERS, DECK, DIAPHRAGMS, CURB & RAIL
- VERTICAL CURVE CAMBER - SPAN #1 = 2 3/4", SPAN #2 = 4", SPAN #3 = 2 3/4"
- TOTAL CAMBER IS AS SHOWN ON CAMBER DIAGRAM



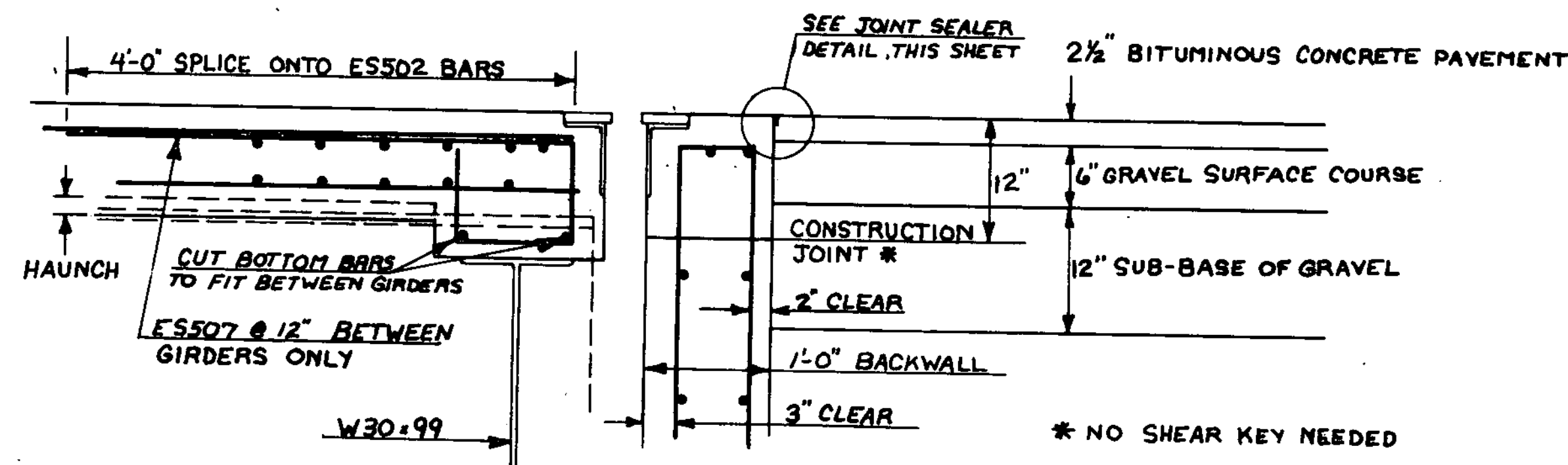
**SPLICE DETAIL FOR SPANS #1 AND #3**

1" = 1'-0"



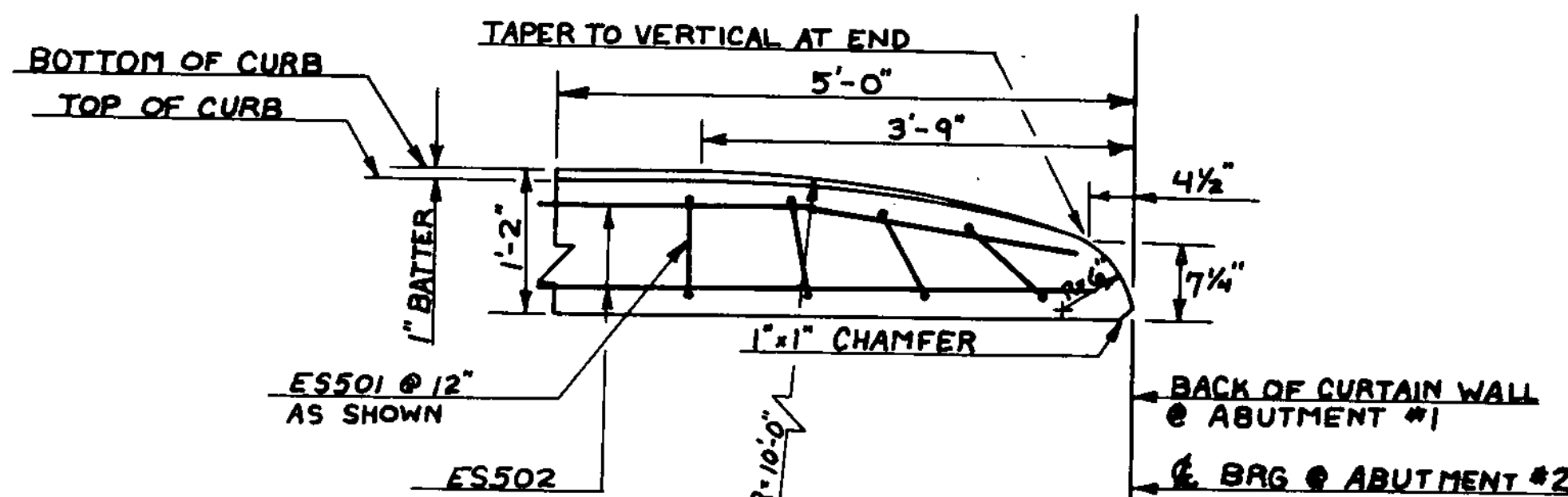
**SPLICE DETAIL FOR SPAN #2**

1" = 1'-0"



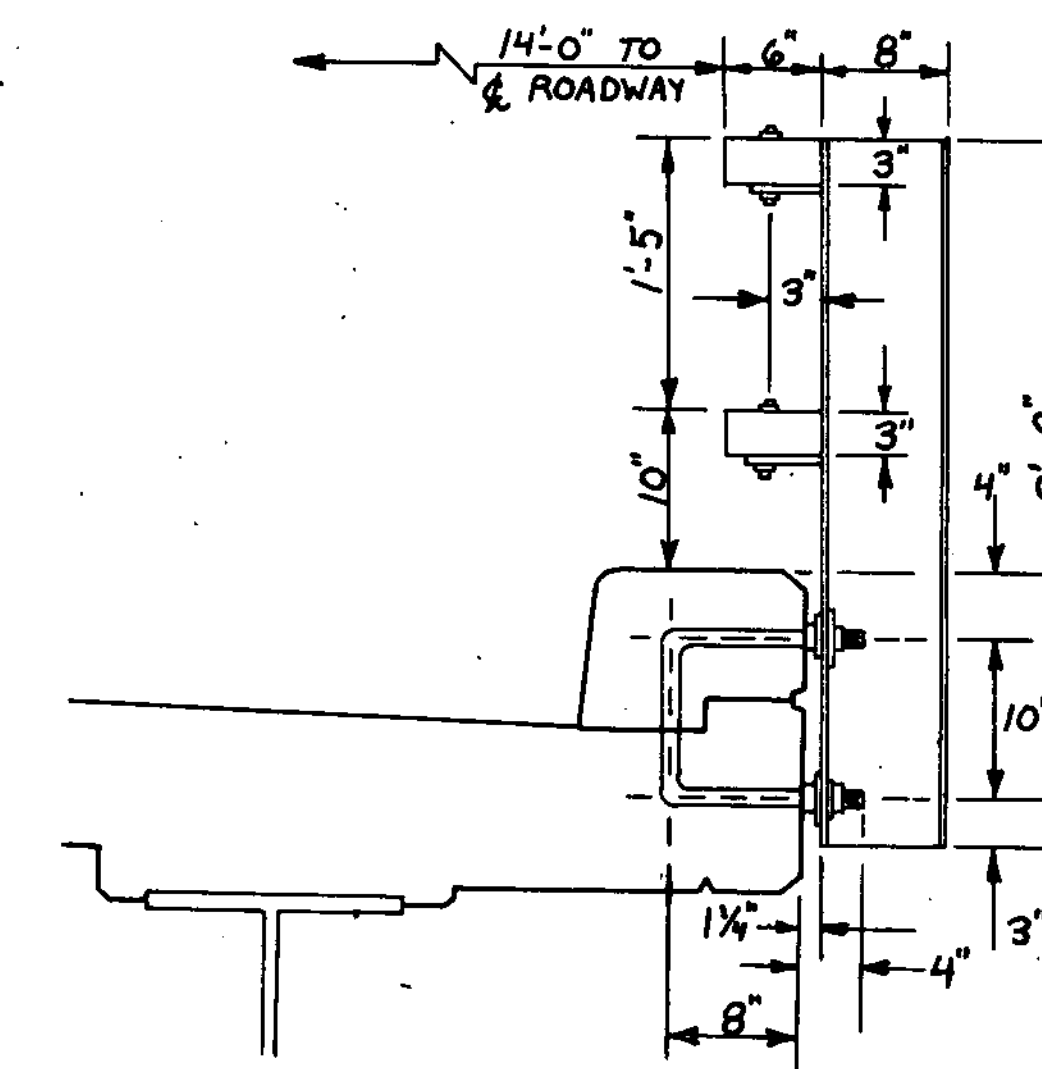
**BACKWALL DETAIL**

1" = 1'-0"



**CURB END DETAIL**

3/4" = 1'-0"



**RAIL DETAIL**

1" = 1'-0"

**STATE OF VERMONT**  
**AGENCY OF TRANSPORTATION**

TOWN OF **GEORGIA** Bridge No. **10**  
 Highway No. **TH #1** Log Sta. **88+15.00**

**TH #1 OVER LAMOILLE RIVER**  
**ADDITIONAL SUPERSTRUCTURE DETAILS**

Designed by **CHRIS WILLIAMS** Drawn by **CHRIS WILLIAMS**  
 Checked by **G.S. ROGERS** Bridge Design Supervisor  
 date **12/84** F.W. Bolcum date **2/85**

PROJECT **GEORGIA** PROJECT NO. **BRZ 1448(3)**  
 Bridge Sheet No. **18** of **61**