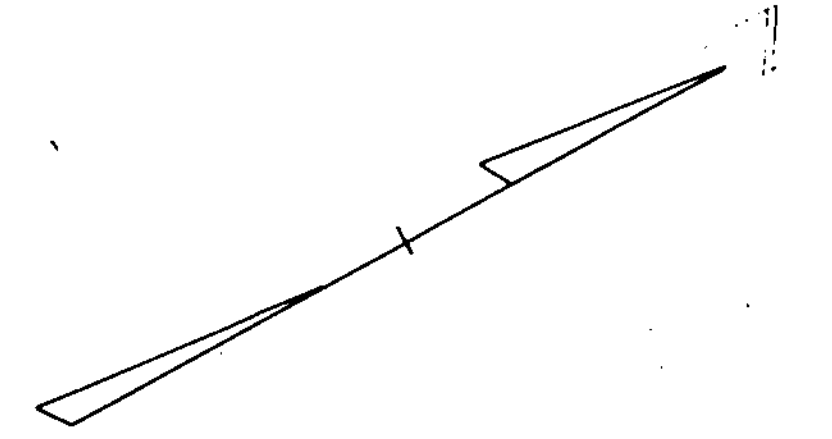


Cut 11.00
 L 48.00
 D 48.00
 R 114.51
 T 80.82
 - 112.54
 E 21.90
 CT L 11.00



POT. 38+05.80

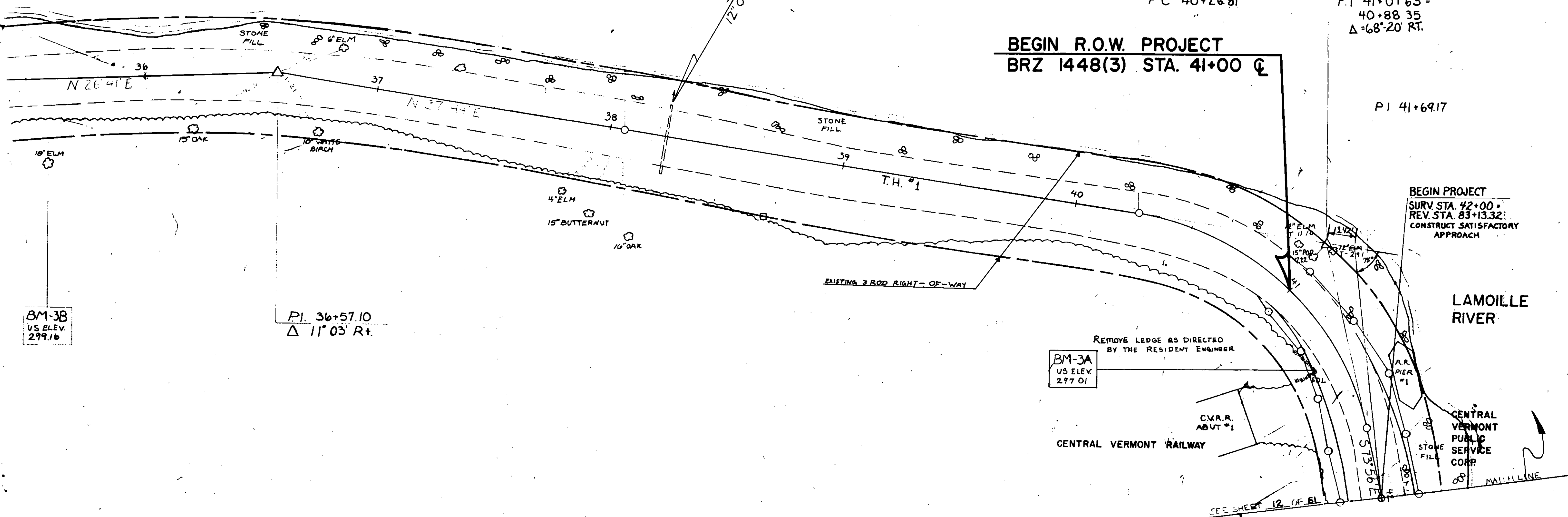
LAMOILLE RIVER

PC 40+26.81

P.I 41+07.63 =
 40+88.35
 $\Delta = 68^{\circ} 20' RT.$

BEGIN R.O.W. PROJECT
 BRZ 1448(3) STA. 41+00 \square

P.I 41+69.17



BM-38
 US ELEV.
 299.16

P.I. 36+57.10
 $\Delta 11^{\circ} 03' Rt.$

BM-3A
 US ELEV.
 277.01

BEGIN PROJECT
 SURV. STA. 42+00 =
 REV. STA. 83+13.32
 CONSTRUCT SATISFACTORY
 APPROACH

REMOVE LEDGE AS DIRECTED
 BY THE RESIDENT ENGINEER

C.V.R.R. ABUT #1
 CENTRAL VERMONT RAILWAY

LAMOILLE RIVER

CENTRAL VERMONT
 PUBLIC SERVICE
 CORP.

NOTE: THIS SHEET IS FOR R.O.W. INFORMATION ONLY -
 SEE OTHER PLAN SHEETS FOR CONSTRUCTION DETAILS.

0 10 20 40
 SCALE IN FEET

SURVEYED BY	DATE
DRAWN BY	DATE
TRACED BY	DATE
GEORGIA	
PROJ.	NO. BRZ 1448(3)
SHEET	11 OF 61