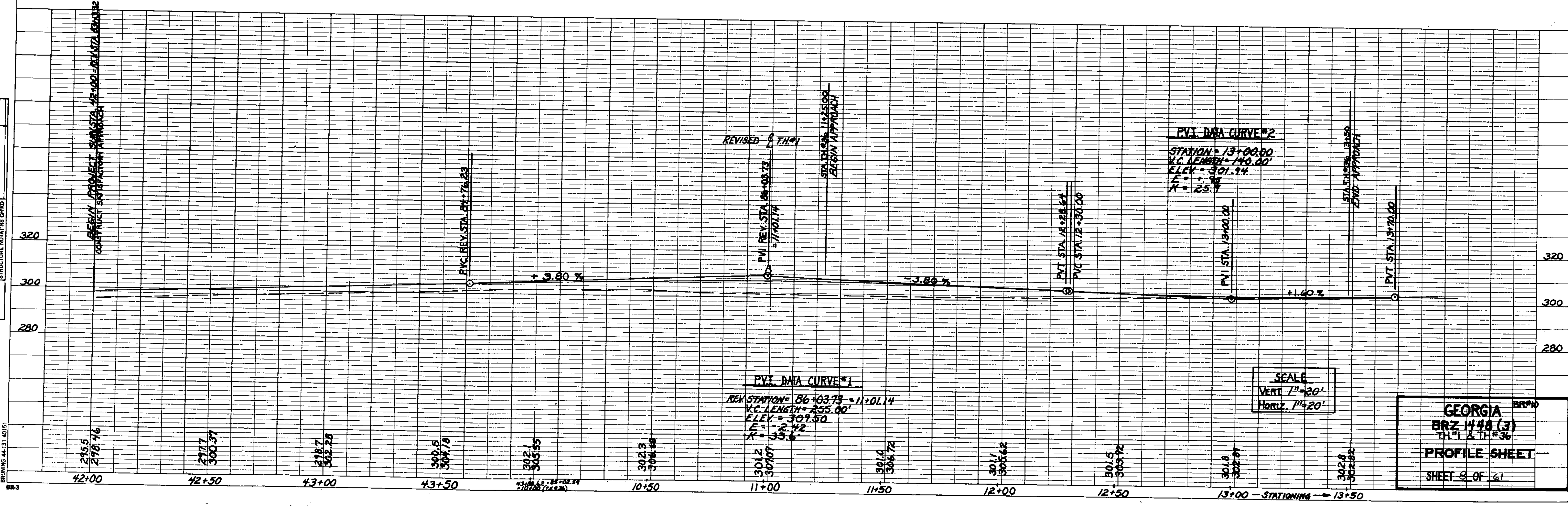


SURVEYED
 PLOTTED
 ALIGNMENT CHECKED
 PVI OF VERT. CHECKED
 NO. _____
 DATE _____

PLOTTED
 GRADES CHECKED
 INVERTS CHECKED
 STRUCTURE NOTATIONS CHECKED
 NO. _____
 DATE _____



BR-3
 DRAWING 44-131-4015

REVISED
 T.H.#1
 PVI REV. STA. 86+03.73
 -11+01.14

PVI DATA CURVE #1
 REV. STATION = 86+03.73 = 11+01.14
 V.C. LENGTH = 255.00'
 ELEV. = 309.50
 F = 2.42
 K = 33.6

PVI DATA CURVE #2
 STATION = 13+00.00
 V.C. LENGTH = 140.00'
 ELEV. = 301.44
 F = .85
 K = 25.7

SCALE
 VERT. 1" = 20'
 HORIZ. 1" = 20'

GEORGIA BR#10
BRZ 1448 (3)
 TH#1 & TH#36
PROFILE SHEET
 SHEET 9 OF 61