

SEE SHEET 5 OF 61  
 TH#1 REV. STA. 83+47  
 NEW 18'x50' ACCGMP (0.064 TH)

**GUARD RAIL, STANDARD STEEL BEAM W/WOOD POSTS, TYPE II**  
 REV. STA. 84+08 LT. → 86+40 LT.  
 REV. STA. 89+89 LT. → 90+87 LT.  
 REV. STA. 89+89 RT. → 90+94 RT.  
 STA. (TH#36) 11+25 LT. → 12+90 LT.

**GUARD RAIL, APPROACH SECTION, TYPE II**  
 REV. STA. 86+40 RT. LT. → 86+53 RT. LT.  
 REV. STA. 89+77 RT. LT. → 89+89 RT. LT.

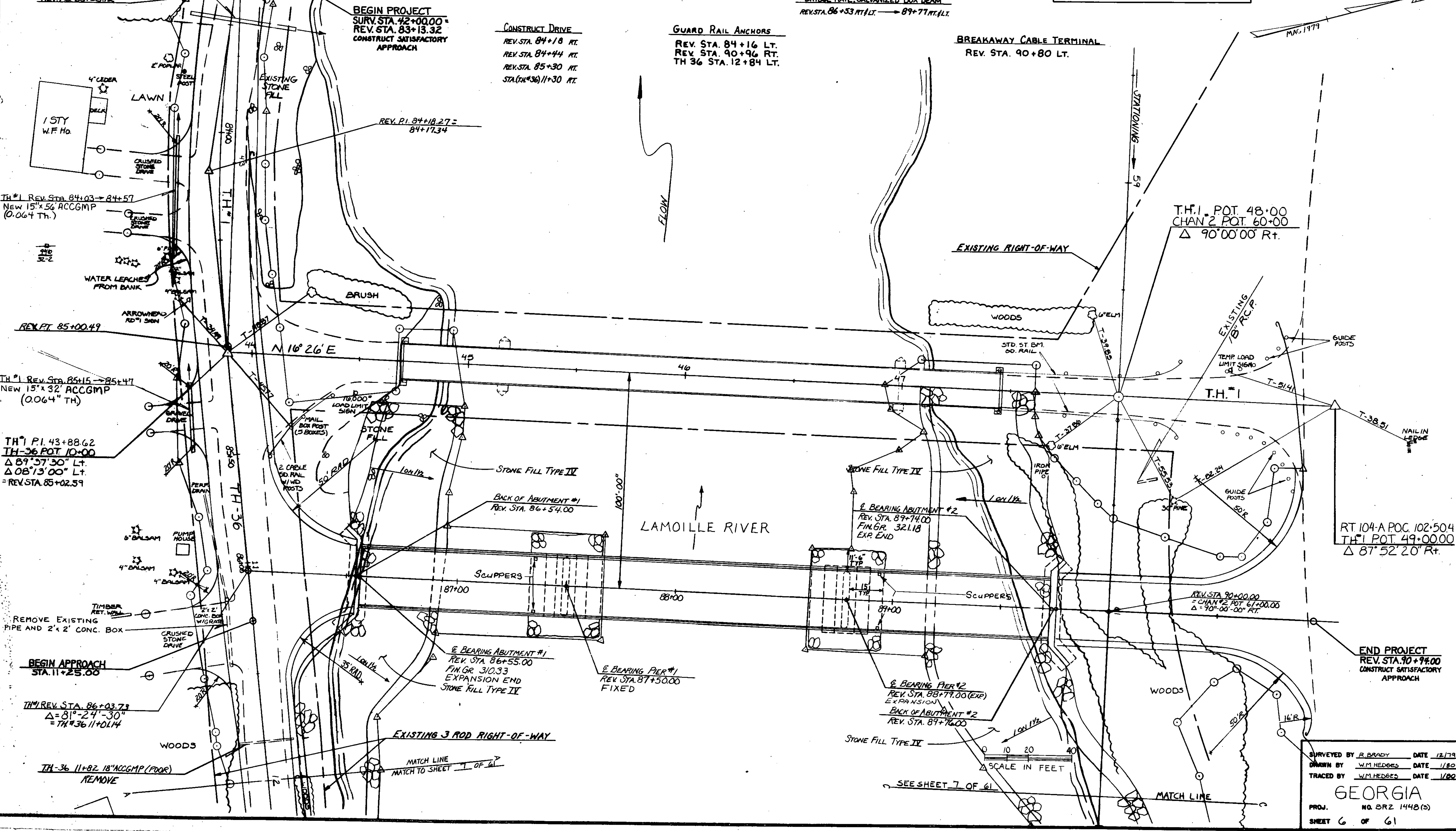
**NOTE: THE "ARROWHEAD RD#1" SIGN AND THE MAIL BOX POST (5 BOXES) SHALL BE REMOVED AND RESET AS DETERMINED BY THE ENGINEER. COST TO BE SUBSIDIARY TO ALL OTHER ITEMS ON THE PROJECT.**

**BRIDGE RAIL, GALVANIZED BOX BEAM**  
 REV. STA. 86+53 RT. LT. → 89+77 RT. LT.

**CONSTRUCT DRIVE**  
 REV. STA. 84+18 RT.  
 REV. STA. 84+44 RT.  
 REV. STA. 85+30 RT.  
 STA. (TH#36) 11+30 RT.

**GUARD RAIL ANCHORS**  
 REV. STA. 84+16 LT.  
 REV. STA. 90+96 RT.  
 TH 36 STA. 12+84 LT.

**BREAKAWAY CABLE TERMINAL**  
 REV. STA. 90+80 LT.



SURVEYED BY R. BRADY DATE 12/79  
 DRAWN BY W.M. HEDGES DATE 1/80  
 TRACED BY W.M. HEDGES DATE 1/80  
**GEORGIA**  
 PROJ. NO. BRZ 1448 (5)  
 SHEET 6 OF 61