

BORING NO. B-2

DEPTH	BLOWS ON CASING	STANDARD PENETRATION NUMBER	MOISTURE	COLOR	LABORATORY CLASSIFICATION OF SOIL
2.5	4	73			AXDC 8'-12'
3.5	4	73			A-4 Sandy Silt
4.5	4	73			AXDC 12'-16'
5.5	4	73			No Sample
6.5	4	73			A-4 Sandy Silt
7.5	4	73			Hole stopped at 20.5'
8.5	4	73			Boulders

Water Level at 1.5'
River Bed at 3.5'

BORING NO. B-4

DEPTH	BLOWS ON CASING	STANDARD PENETRATION NUMBER	MOISTURE	COLOR	LABORATORY CLASSIFICATION OF SOIL
9				Brn	A-4 Sandy Silt
11				Gry	A-4 Silt
56					A-4 Sandy Silt
R					A-1-a Sandy Gravel
142					A-4 Gravelly Silt
100					A-2-4 Silty Gravel
100					A-1-b Silty Gravel
					Reamed casing to 36'
					AXDC 36-39.5'
					AXDC 39.5-45'
					AXDC 45-62'
					HP, SILT & Bo.
					Hole stopped at 62'
					No bedrock

BORING NO. B-5

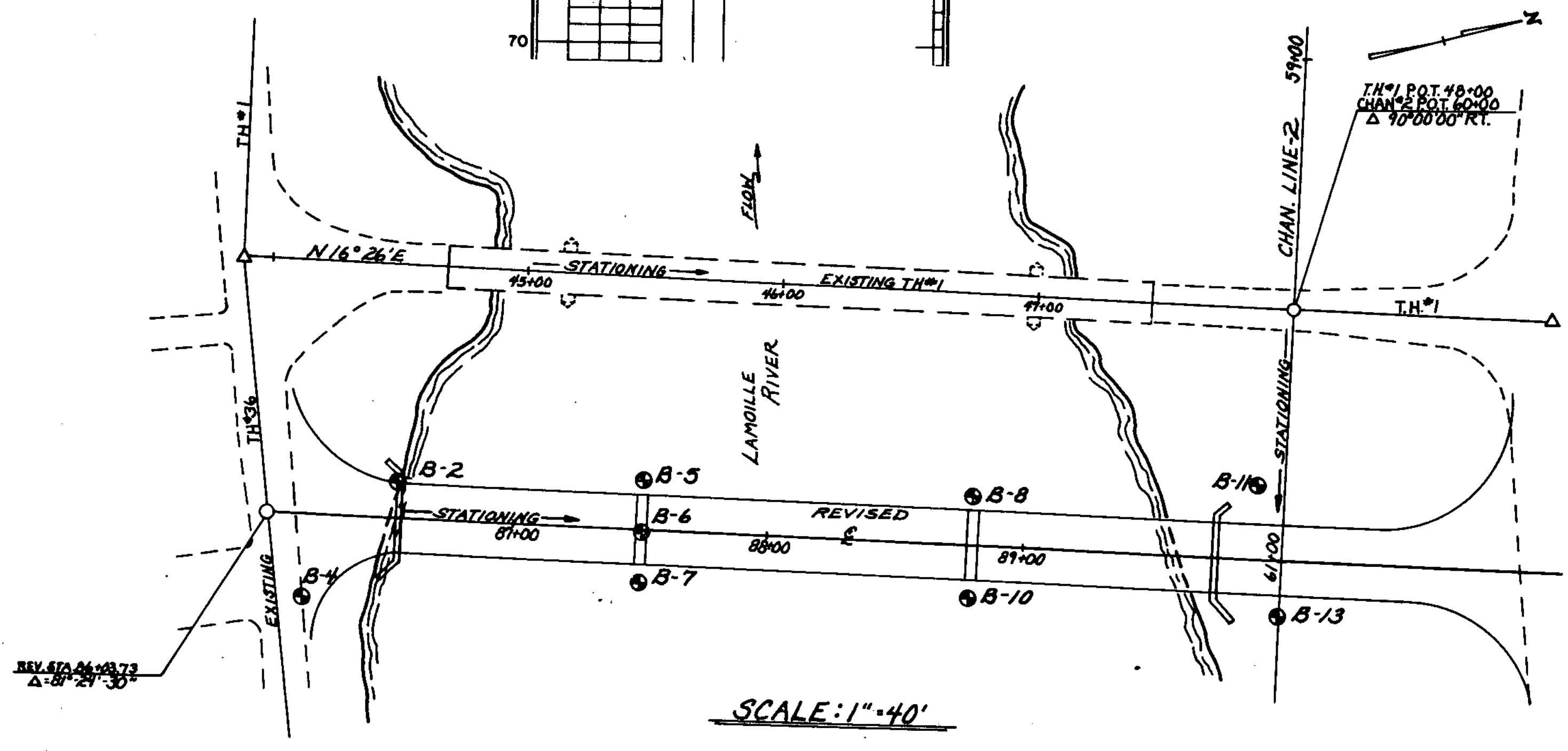
DEPTH	BLOWS ON CASING	STANDARD PENETRATION NUMBER	MOISTURE	COLOR	LABORATORY CLASSIFICATION OF SOIL
4					River water level @ 1.5'
12					Water 1.5-13'
32					River bed at 13'
27					A-2-4 Silty Sand
15 R					AXDC 17'-20'
24					A-6 Silty Clay
177					Hole stopped at 21'
182 R					HP & Bo.

BORING NO. B-6

DEPTH	BLOWS ON CASING	STANDARD PENETRATION NUMBER	MOISTURE	COLOR	LABORATORY CLASSIFICATION OF SOIL
27	36				No Sample
20					AXMDC 12'-16'
9					No Sample
25	36				No Sample
22					AXDC 16'-20'
182					No Sample
51	96				AXDC 20'-24'
72					No Sample
124					AXDC 24'-28'
107					No Sample
34	K				AXDC 24'-28'
24					No Sample
35					No Sample
37	120				No Sample
					Hole stopped at 29.5'
					HP & Bo.

NOTE:
HP = HARD PAN
BO = BOULDER

BORING NO.	SURVEY STATION	OFFSET
B-2	44+53	85' RT.
B-4	44+18	132' RT.
B-5	45+50	80' RT.
B-6	45+50	100' RT.
B-7	45+50	120' RT.
B-8	46+78	80' RT.
B-10	46+78	120' RT.
B-11	47+88	70' RT.
B-13	47+99	121' RT.



BORING NOMENCLATURE

● STANDARD PENETRATION BORINGS
 SAMPLER OUTSIDE DIAMETER 2"
 SAMPLER INSIDE DIAMETER 1 3/8"
 WEIGHT OF HAMMER 140 LBS
 HAMMER FALL 30"

BLOWS ON CASING - THE NUMBER OF BLOWS PER FOOT REQUIRED TO DRIVE 3" O.D. CASING USING A 350 LB. HAMMER WITH A 24" DROP.

STATE OF VERMONT
AGENCY OF TRANSPORTATION

TOWN OF **GEORGIA** Bridge No. **10**
 Highway No. **TH#1** Log Sta. _____
 REV. Sta. **88+15.00**

BORING LOG
TH#1 OVER LAMOILLE RIVER

Designed by **C.P. WILLIAMS** Draw. by **E.C. HOUSTON**
 Checked by _____ Bridge Design Supervisor
C.P. WILLIAMS date 11/84 **F.V. Bolkum** date 2/85

PROJECT **GEORGIA** PROJECT NO. **BRZ1448(3)**
 Bridge Sheet No. _____ Sheet **3** of **61**