

PROJECT: Brookfield
 NUMBER: SA-16-1962
 TYPE: 8' x 5'-9" x 52' long C.G.M.P.P.A.
 CONTRACTOR: 2069
 LOCATION: Sh. 212 1/2 mi. New-Edinburgh
 DRAWN BY: BRB

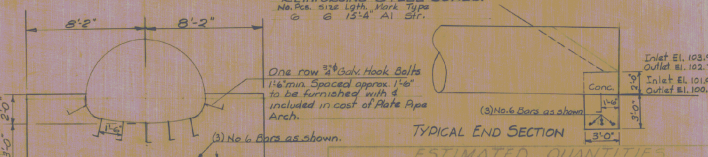
Drawn by: HWS, Apr 1962
 Traced by: HWS, Apr 1962
 Checked by: R.T.B. Apr 1962
 Approved: R.T.B. Apr 1962
 Chief Engineer

DETAILS OF PLATE PIPE ARCH
 USE DETAIL E FOR THIS PIPE ARCH
 (See Section A, Detail E, for all pipe arches.)
 SPAN - 8'-2"
 RISE - 5'-9"
 O.A. LENGTH - 52'-0"

WEIGHT & GAGE TABLE

SPAN	RISE	Area Sq Ft	Go. Co. Wgt. Top Arch Ft	Go. Co. Wgt. Top Arch Ft	Go. Co. Wgt. Top Arch Ft	Go. Co. Wgt. Top Arch Ft	Go. Co. Wgt. Top Arch Ft	Go. Co. Wgt. Top Arch Ft	Go. Co. Wgt. Top Arch Ft	Go. Co. Wgt. Top Arch Ft	Go. Co. Wgt. Top Arch Ft	Go. Co. Wgt. Top Arch Ft	Go. Co. Wgt. Top Arch Ft	Go. Co. Wgt. Top Arch Ft	Go. Co. Wgt. Top Arch Ft	Go. Co. Wgt. Top Arch Ft	Go. Co. Wgt. Top Arch Ft	Go. Co. Wgt. Top Arch Ft	
6'-1"	4'-7"	2.2	10.5	7.72	10.8	7.72	10.8	7.72	10.8	7.72	10.8	7.72	10.8	7.72	10.8	7.72	10.8	7.72	10.8
6'-4"	4'-9"	2.4	10.8	7.72	10.8	7.72	10.8	7.72	10.8	7.72	10.8	7.72	10.8	7.72	10.8	7.72	10.8	7.72	10.8
6'-9"	4'-11"	2.6	10.8	7.72	10.8	7.72	10.8	7.72	10.8	7.72	10.8	7.72	10.8	7.72	10.8	7.72	10.8	7.72	10.8
7'-0"	5'-1"	2.8	10.8	7.72	10.8	7.72	10.8	7.72	10.8	7.72	10.8	7.72	10.8	7.72	10.8	7.72	10.8	7.72	10.8
7'-3"	5'-3"	3.1	8	7.252	10.8	7.252	10.8	7.252	10.8	7.252	10.8	7.252	10.8	7.252	10.8	7.252	10.8	7.252	10.8
7'-8"	5'-5"	3.3	8	7.252	10.8	7.252	10.8	7.252	10.8	7.252	10.8	7.252	10.8	7.252	10.8	7.252	10.8	7.252	10.8
7'-11"	5'-7"	3.5	8	7.252	10.8	7.252	10.8	7.252	10.8	7.252	10.8	7.252	10.8	7.252	10.8	7.252	10.8	7.252	10.8
8'-2"	5'-9"	3.8	8	7.252	10.8	7.252	10.8	7.252	10.8	7.252	10.8	7.252	10.8	7.252	10.8	7.252	10.8	7.252	10.8
8'-7"	5'-11"	4.0	8	7.252	10.8	7.252	10.8	7.252	10.8	7.252	10.8	7.252	10.8	7.252	10.8	7.252	10.8	7.252	10.8
8'-10"	6'-1"	4.3	8	7.252	10.8	7.252	10.8	7.252	10.8	7.252	10.8	7.252	10.8	7.252	10.8	7.252	10.8	7.252	10.8
9'-4"	6'-3"	4.6	8	7.252	10.8	7.252	10.8	7.252	10.8	7.252	10.8	7.252	10.8	7.252	10.8	7.252	10.8	7.252	10.8
9'-6"	6'-5"	4.9	8	7.252	10.8	7.252	10.8	7.252	10.8	7.252	10.8	7.252	10.8	7.252	10.8	7.252	10.8	7.252	10.8
9'-9"	6'-7"	5.2	8	7.252	10.8	7.252	10.8	7.252	10.8	7.252	10.8	7.252	10.8	7.252	10.8	7.252	10.8	7.252	10.8
10'-3"	6'-9"	5.5	7.5	5.379	8	7.303	8	7.303	8	7.303	8	7.303	8	7.303	8	7.303	8	7.303	8
10'-8"	6'-11"	5.8	7.5	5.379	8	7.303	8	7.303	8	7.303	8	7.303	8	7.303	8	7.303	8	7.303	8
10'-11"	7'-1"	6.1	7.5	5.379	8	7.303	8	7.303	8	7.303	8	7.303	8	7.303	8	7.303	8	7.303	8
11'-5"	7'-3"	6.4	7.5	5.379	8	7.303	8	7.303	8	7.303	8	7.303	8	7.303	8	7.303	8	7.303	8
11'-7"	7'-5"	6.7	7.5	5.379	8	7.303	8	7.303	8	7.303	8	7.303	8	7.303	8	7.303	8	7.303	8
11'-10"	7'-7"	7.1	7.5	5.379	8	7.303	8	7.303	8	7.303	8	7.303	8	7.303	8	7.303	8	7.303	8
12'-4"	7'-9"	7.4	7.5	5.379	8	7.303	8	7.303	8	7.303	8	7.303	8	7.303	8	7.303	8	7.303	8
12'-6"	7'-11"	7.8	7.5	5.379	8	7.303	8	7.303	8	7.303	8	7.303	8	7.303	8	7.303	8	7.303	8
12'-8"	8'-1"	8.1	7.5	5.379	8	7.303	8	7.303	8	7.303	8	7.303	8	7.303	8	7.303	8	7.303	8
12'-10"	8'-4"	8.5	7.5	5.379	8	7.303	8	7.303	8	7.303	8	7.303	8	7.303	8	7.303	8	7.303	8
13'-5"	8'-5"	8.9	5.3	4.997	5.3	4.997	5.3	4.997	5.3	4.997	5.3	4.997	5.3	4.997	5.3	4.997	5.3	4.997	5.3
13'-11"	8'-7"	9.3	5.3	4.997	5.3	4.997	5.3	4.997	5.3	4.997	5.3	4.997	5.3	4.997	5.3	4.997	5.3	4.997	5.3
14'-1"	8'-9"	9.7	5.3	4.997	5.3	4.997	5.3	4.997	5.3	4.997	5.3	4.997	5.3	4.997	5.3	4.997	5.3	4.997	5.3
14'-3"	8'-11"	10.1	5.3	4.997	5.3	4.997	5.3	4.997	5.3	4.997	5.3	4.997	5.3	4.997	5.3	4.997	5.3	4.997	5.3
14'-10"	9'-1"	10.5	5.3	4.997	5.3	4.997	5.3	4.997	5.3	4.997	5.3	4.997	5.3	4.997	5.3	4.997	5.3	4.997	5.3
15'-4"	9'-3"	10.9	5.3	4.997	5.3	4.997	5.3	4.997	5.3	4.997	5.3	4.997	5.3	4.997	5.3	4.997	5.3	4.997	5.3
15'-6"	9'-5"	11.3	5.3	4.997	5.3	4.997	5.3	4.997	5.3	4.997	5.3	4.997	5.3	4.997	5.3	4.997	5.3	4.997	5.3
15'-8"	9'-7"	11.8	5.3	4.997	5.3	4.997	5.3	4.997	5.3	4.997	5.3	4.997	5.3	4.997	5.3	4.997	5.3	4.997	5.3
15'-10"	9'-10"	12.2	5.3	4.997	5.3	4.997	5.3	4.997	5.3	4.997	5.3	4.997	5.3	4.997	5.3	4.997	5.3	4.997	5.3
16'-5"	4'-11"	12.6	1	1.711	3	1.669	3	1.669	3	1.669	3	1.669	3	1.669	3	1.669	3	1.669	3
16'-7"	10'-1"	13.1	1	1.711	3	1.669	3	1.669	3	1.669	3	1.669	3	1.669	3	1.669	3	1.669	3

NOTES
 Approved June 28, 1962
 R. J. Janel
 District Engineer
 Correct June 27, 1962
 Approved June 28, 1962
 Chief Engineer



ESTIMATED QUANTITIES

ITEM NO.	DESCRIPTION	UNIT	NET	DRUM	FINAL
106-C	Wireless Chan. Excav.	c.y.			25
107	Struct. Excav.	c.y.			80
401-B	Conc. Pl. B. (mod)	c.y.			16
402	Reinf. Steel	Lbs.			158
421-B	Conc. Gate Met. Pl. Pipe Arch (8'-2" x 5'-9" I.R. #566, 8" x 100)	L.S.			1
526	Pl. Pipe for Bank Prot., Mod. for Culvert Ends.	c.y.			20

STATE OF VERMONT
 DEPARTMENT OF HIGHWAYS
 STANDARD STRUCTURES
 SB-PA #2
 TOWN OF BROOKFIELD
 SA Aid by 1
 SUPERVISED BY Prouty
 COMPLETED BY HWS, CHECKED BY W.B.T.
 PROJECT NO. S.A. #16-1962
 SHEET 1 OF 1