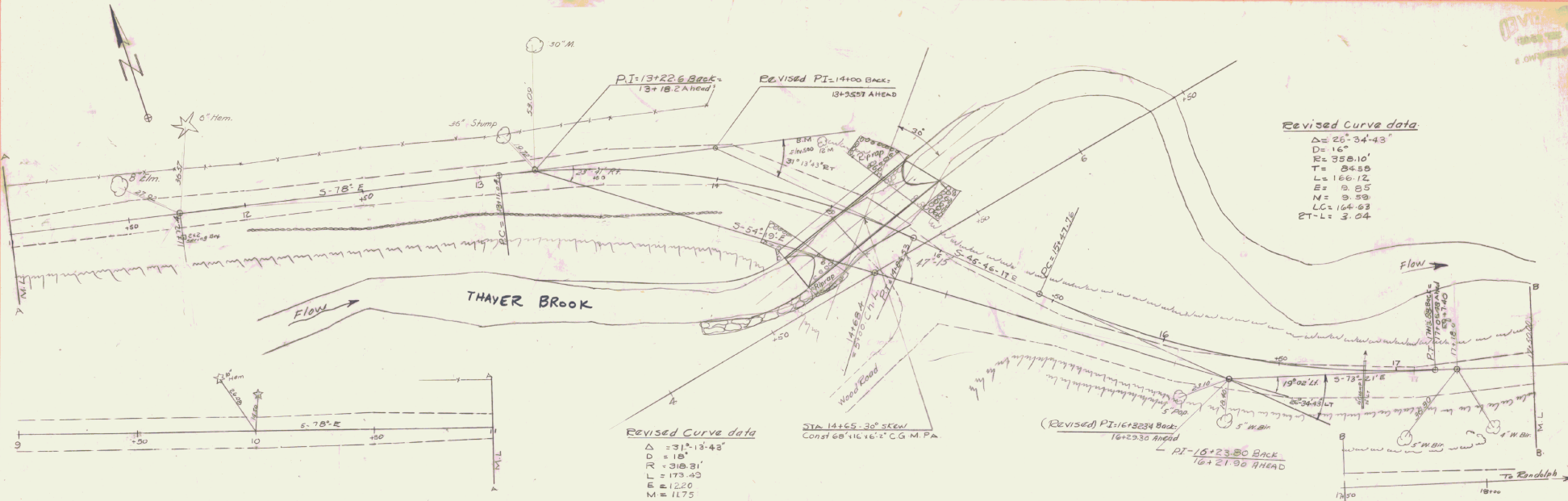


PLAN
 DATE
 DRAWN BY
 CHECKED BY
 NO.

DATE
 NO.



Revised Curve data
 $\Delta = 25^{\circ}34'43''$
 $D = 16''$
 $R = 358.10'$
 $T = 84.89$
 $L = 166.12$
 $E = 9.55$
 $M = 9.59$
 $LC = 164.63$
 $ET - L = 3.04$

Revised Curve data
 $\Delta = 31^{\circ}13'48''$
 $D = 18''$
 $R = 318.81'$
 $L = 173.43$
 $E = 12.20$
 $M = 11.75$
 $LC = 171.35$
 $ET - L = 4.43$
 $T = 86.96$

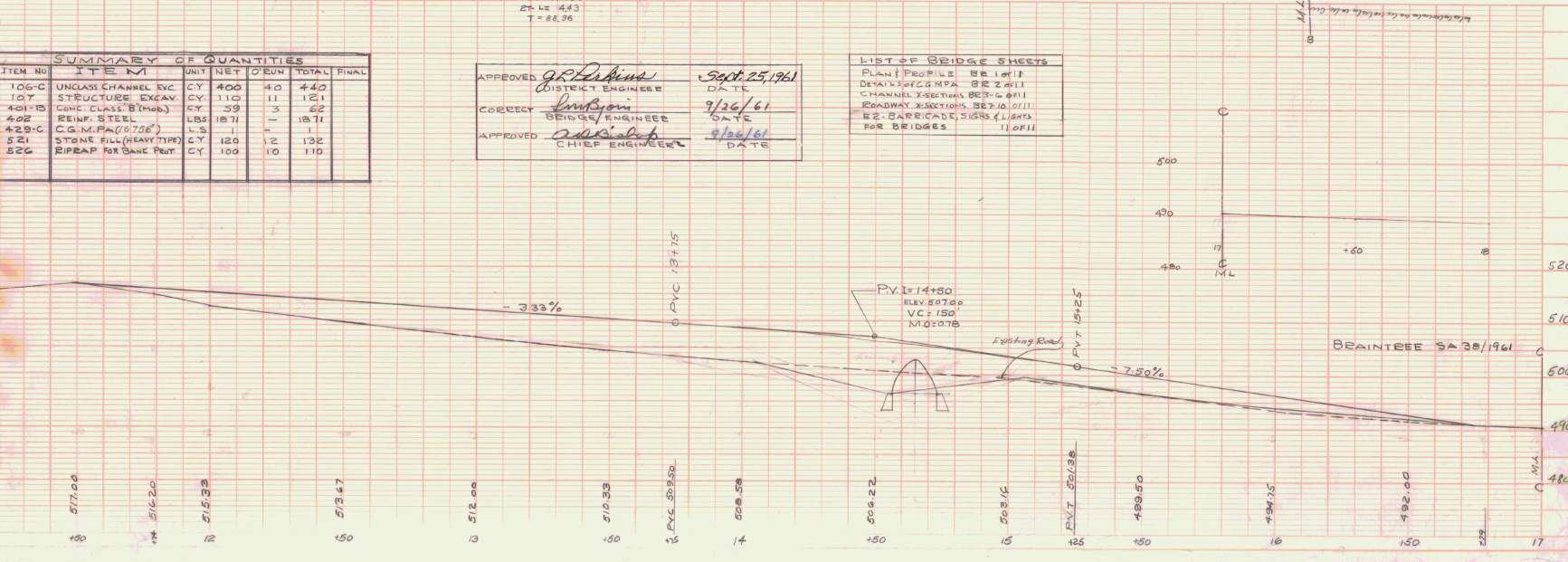
(Revised) PI 16+32.34 Back
 16+23.30 Ahead
 $\Delta = 15^{\circ}23'00''$
 $D = 16''$
 $R = 358.10'$
 $T = 84.89$
 $L = 166.12$
 $E = 9.55$
 $M = 9.59$
 $LC = 164.63$
 $ET - L = 3.04$

| SUMMARY OF QUANTITIES | | | | | |
|-----------------------|-------------------------|------|------|------|-------------|
| ITEM NO. | ITEM | UNIT | NET | ORUN | TOTAL FINAL |
| 106-C | UNCLASS CHANNEL EXC. | CY | 400 | 40 | 440 |
| 107 | STRUCTURE EXCAV. | CY | 110 | 11 | 121 |
| 401-B | CONC. CLASS B (MOD) | CY | 59 | 3 | 62 |
| 402 | REINF. STEEL | LBS | 1871 | - | 1871 |
| 429-C | C.G.M.P.A. (6.75') | L.S. | 1 | - | 1 |
| 521 | STONE FILL (HEAVY TYPE) | CY | 120 | 12 | 132 |
| 526 | RIEPAK FOR BANK PROT. | CY | 100 | 10 | 110 |

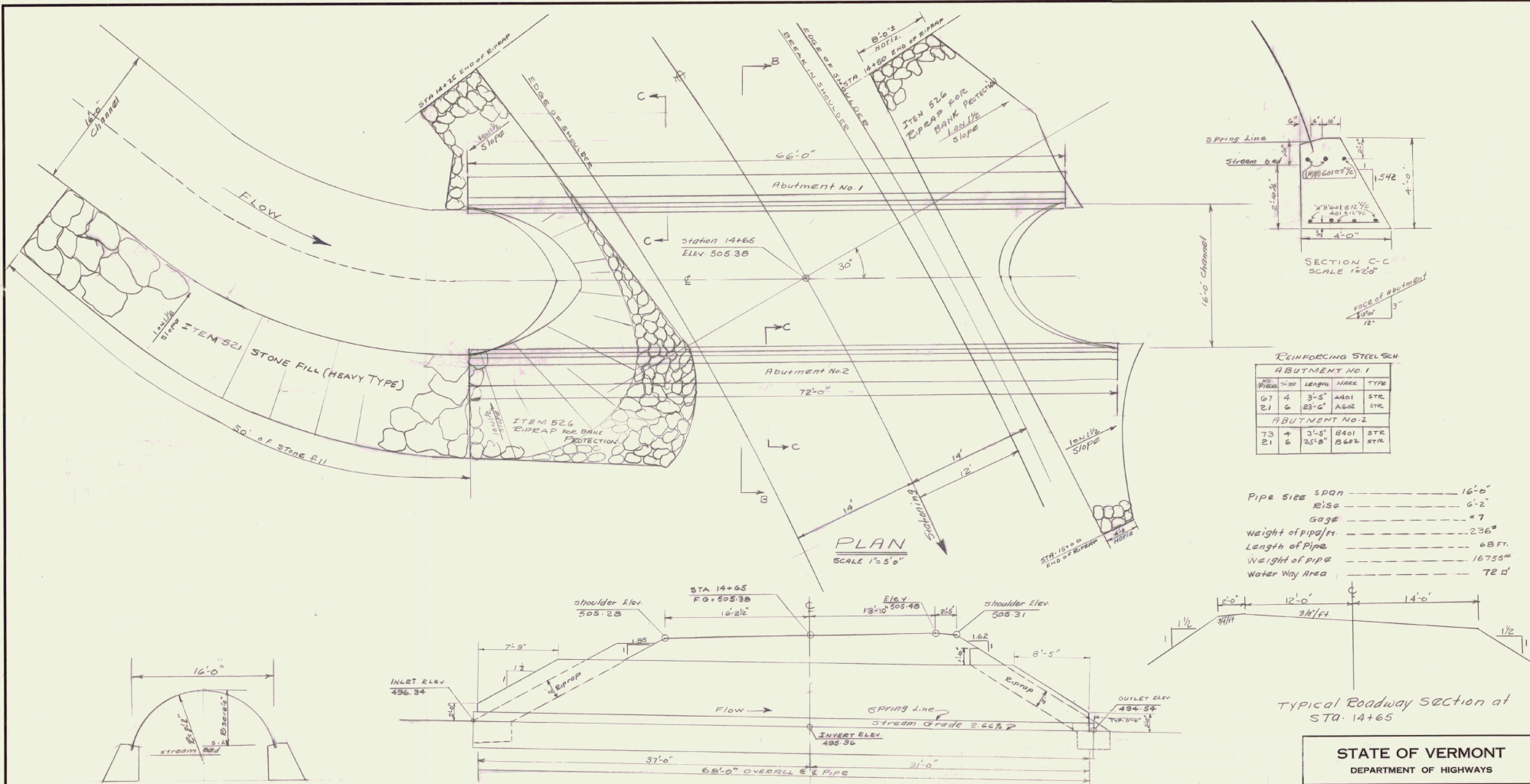
APPROVED: *J.R. Deems* DISTRICT ENGINEER DATE: 5/20/61
 CORRECTED: *Sanborn* DATE: 9/26/61
 APPROVED: *W.S. Smith* CHIEF ENGINEER DATE: 9/26/61

LIST OF BRIDGE SHEETS
 PLAN & PROFILE BR 1011
 DETAILS OF C.G.M.P.A. BR 2411
 CHANNEL SECTIONS BR 3-6 0111
 ROADWAY SECTIONS BR 7-10 0111
 E.E. BARRIAGE SIGNS & LIGHTS FOR BRIDGES 11 0111

BRANDT
 S.A. #38-1561
 16' 0" x 6' 2" C.G.M.P.A.
 68' 14'
 YEAR 19
 LOCATION S.A. 241 #3
BR 17 TH 4



BR 1011

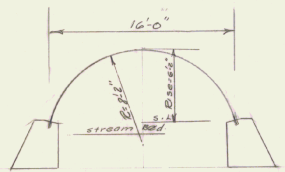
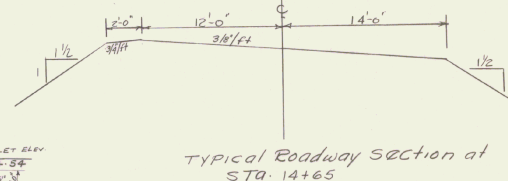


REINFORCING STEEL SCH

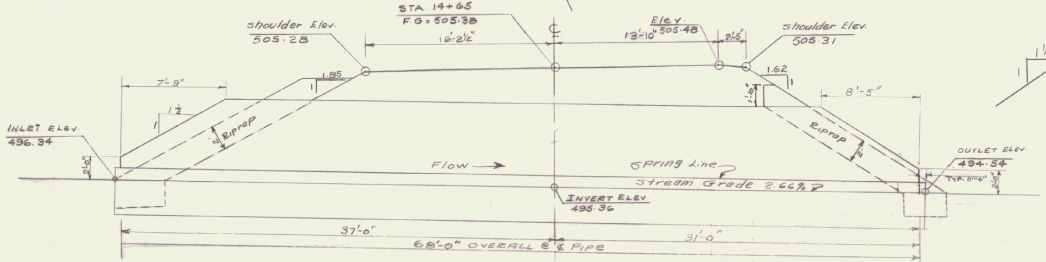
| ABUTMENT NO. 1 | | | | | |
|----------------|--------|--------|--------|------|------|
| NO | PIECES | SIZE | LENGTH | MARK | TYPE |
| 67 | 4 | 3'-5" | A401 | | STR |
| 21 | 6 | 23'-6" | A602 | | STR |

| ABUTMENT NO. 2 | | | | | |
|----------------|--------|--------|--------|------|------|
| NO | PIECES | SIZE | LENGTH | MARK | TYPE |
| 73 | 4 | 3'-5" | B401 | | STR |
| 21 | 6 | 25'-8" | B602 | | STR |

Pipe size span ----- 16'-0"
 Rise ----- 6'-2"
 Gage ----- 7"
 Weight of pipe/ft ----- 236#
 Length of pipe ----- 68 FT.
 Weight of pipe ----- 16756#
 Water Way Area ----- 72 D'



SECTION B-B
SCALE 1/2 5/8"



ELEVATION
SCALE 1/2 5/8"

| ITEM NO. | ITEM | UNIT | NET | O'BYIN | TOTAL | FINAL |
|----------|-----------------------------|------|------|--------|-------|-------|
| 401-B | CONC. CLASS B (MOD.) | C.Y. | 59 | 3 | 62 | |
| 402 | REIN. STEEL | LBS. | 1871 | - | 1871 | |
| 407 | ASPHALTIC-ASS. COATING | S.Y. | | | | |
| 502-B | TREATED TIMBER PILING | L.F. | | | | |
| 503 | SPLICES FOR STEEL PILING | EA. | | | | |
| 504 | STEEL PILING | L.F. | | | | |
| 502-A | UNTREATED TIMBER PILING | L.F. | | | | |
| 106-C | UNCL. CHANNEL EXCAVATION | C.Y. | 400 | 40 | 440 | |
| 107 | STRUCTURE EXCAVATION | C.Y. | 110 | 11 | 121 | |
| 429C | C.G.M.P.A. (16756#) GAGE #7 | L.S. | 1 | - | 1 | |
| 521 | STONE FILL (HEAVY TYPE) | C.Y. | 120 | 12 | 132 | |
| 526 | RIPRAP FOR BANK PROTECTION | C.Y. | 100 | 10 | 110 | |

STATE OF VERMONT
 DEPARTMENT OF HIGHWAYS

TOWN OF BRAINTREE

ROUTE No. 3A BR 3 LOG STA. 68+16.5-62 Corrugated Galvanized Metal Plate Arch

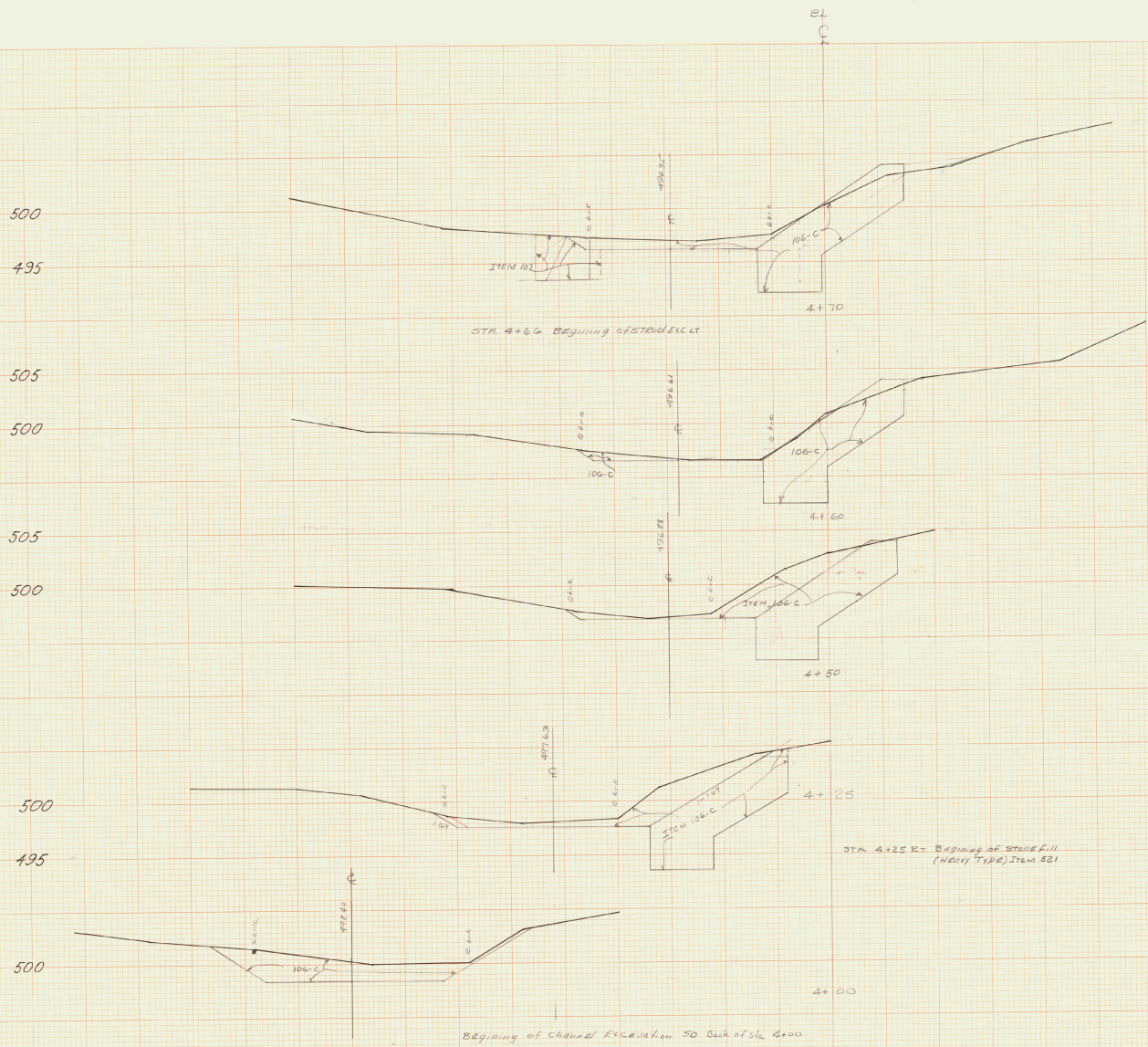
SCALE AS SHOWN

SURVEYED BY _____

DRAWN BY G.V.K. CHECKED BY _____

PROJECT No. 3A 38/1961

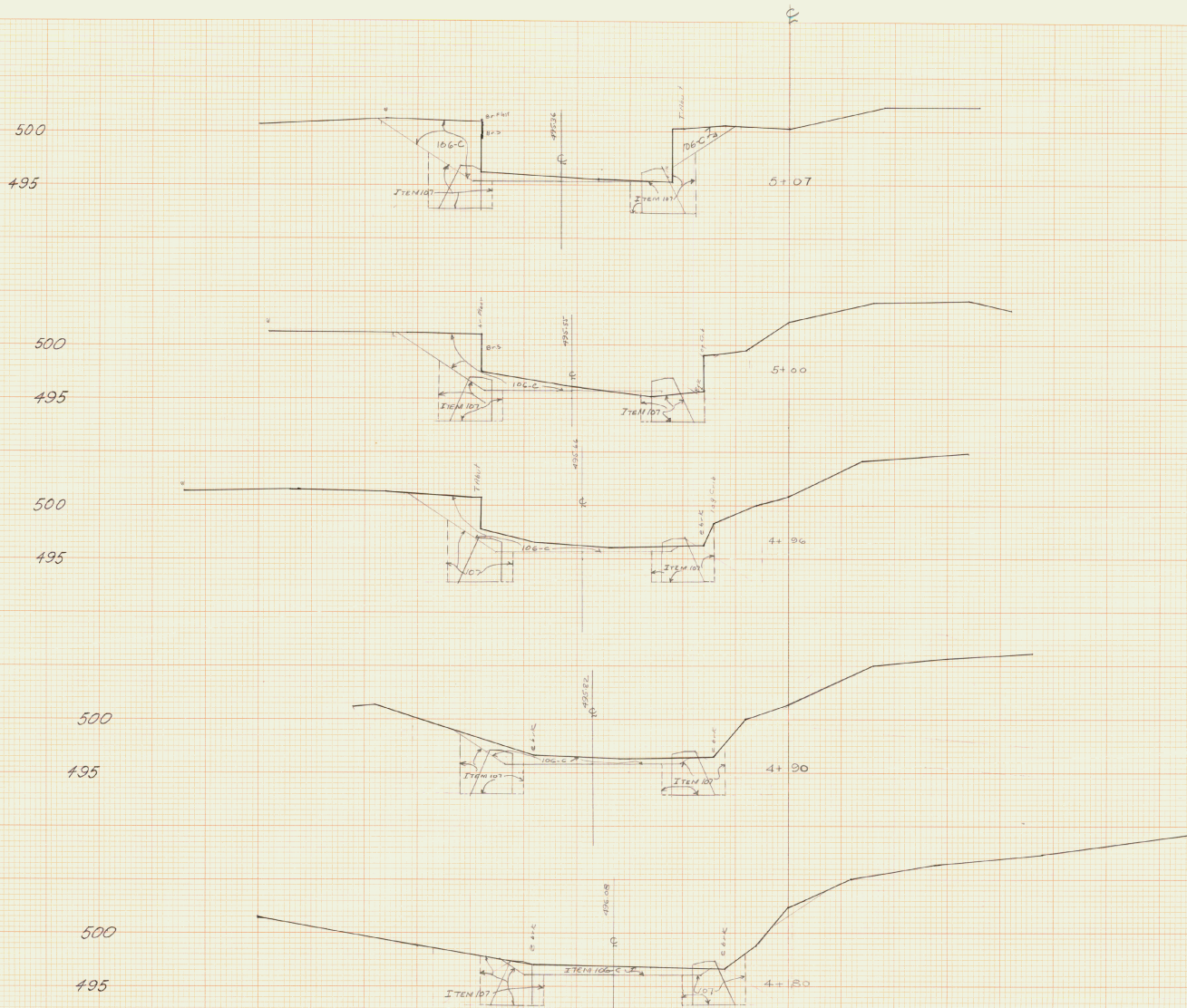
SHEET BR 2 OF 11



1 INCH=5 FEET

Channel Sections
Branfree Bridge
SA 38/1961

| | | | |
|---------------------|---------|----------|-------|
| LEVELS BY | Martin | CHKD. BY | |
| SECTIONS PLOTTED BY | Gvk | CHKD. BY | |
| PLANIMETERED BY | SA V.C. | CHKD. BY | |
| EXAMINED BY | | NO. | FILED |
| SHEET 31E3 | | OF 11 | |



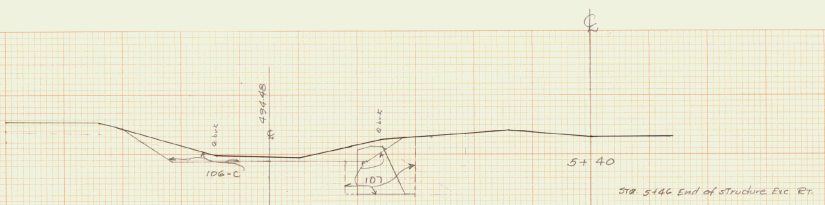
STA 4+72 Beginning of Structure Excavation R₁
 STA 4+72 end of Stone Fill (heavy type) R₁

1 INCH - 5 FEET

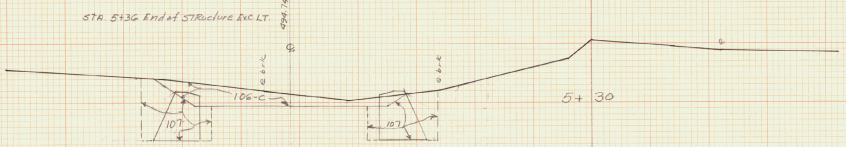
Channel Sections
 Braintree Bridge
 SA 38/1961

| | |
|--------------------------------|--------------------|
| LEVELS BY <u>Martin</u> | CKD. BY |
| SECTIONS PLOTTED BY <u>guk</u> | CKD. BY <u>guk</u> |
| PLANNED BY <u>guk</u> | EXAMINED BY |
| NO | FILED |
| SHEET <u>BR 4</u> OF <u>11</u> | |

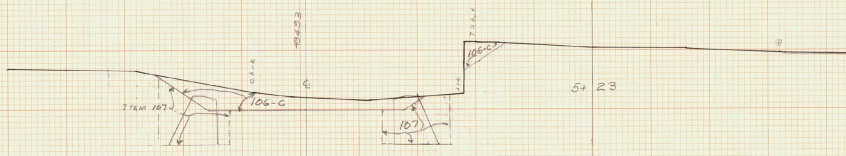
500
495



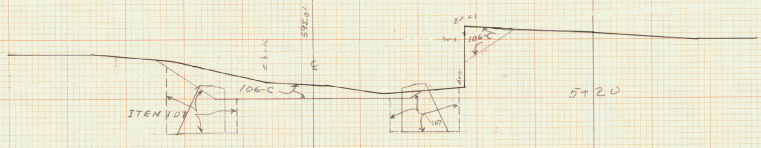
500
495



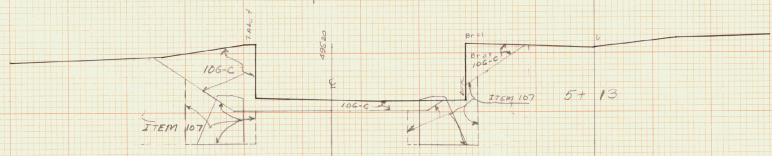
500
495



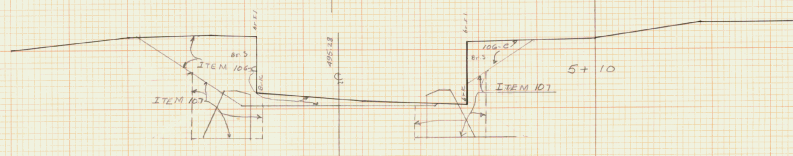
500
495



500
495



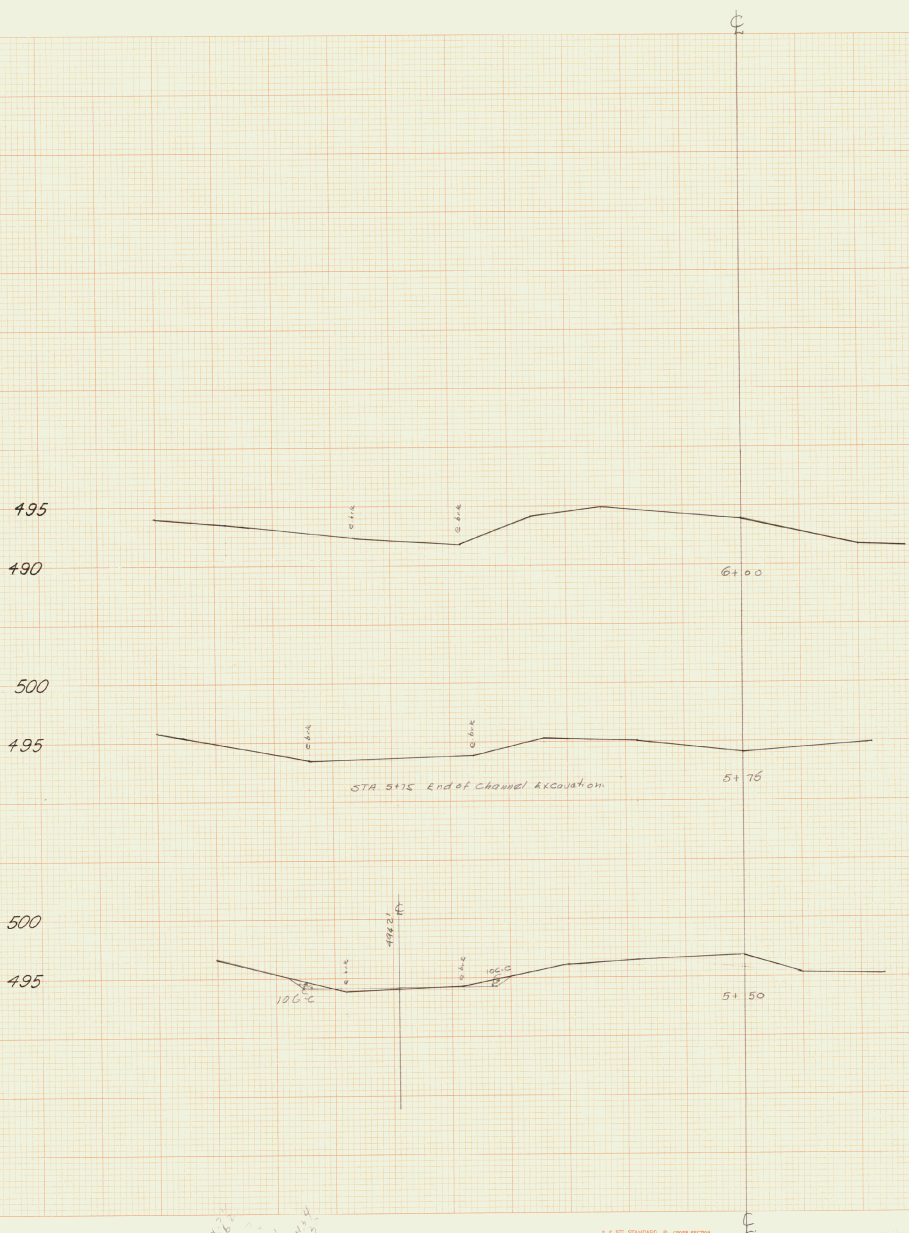
500
495



1 INCH = 5 FEET

Channel Sections
Braintree Bridge
SA 235/1961

| | | | |
|---------------------|--------|------------|-------|
| DESIGNED BY | MATHIN | CHECKED BY | W |
| SECTIONS PLOTTED BY | G.W.K. | CAD. BY | W |
| PLANNED BY | G.V.K. | | |
| EXAMINED BY | | NO. | FILED |
| SHEET | | 235 | OF 11 |



1 INCH = 5 FEET

Channel Sections
 Braintree Bridge
 SA 35/1961

| | | | |
|---------------------|--------|----------|-------|
| LEVELS BY | Mark A | CHKD. BY | W |
| SECTIONS PLOTTED BY | SAE | CHKD. BY | W |
| PLANNED BY | SAE | CHKD. BY | W |
| DESIGNED BY | | NO. | FILED |
| SHEET 866 | | OF 11 | |



1 INCH = 5 FEET
 Roadway Sections
 Braintree Bridge

| | | | |
|--------------------|-------------|------------|----|
| DESIGNED BY | Martin | CHECKED BY | |
| SECTION PLOTTED BY | G.A.K. B.W. | DATE | |
| PLANNED BY | | FILED | |
| EXAMINED BY | | FILED | |
| SHEET | 13 | OF | 11 |



1 INCH = 5 FEET

Roadway Sections
Braitree Bridge

| | |
|----------------------------------|--------------------------|
| LEVELS BY <i>Smith</i> | DESIGNED BY <i>Smith</i> |
| SECTIONS PLOTTED BY <i>Smith</i> | CHECKED BY <i>Smith</i> |
| PLANNING PERIOD BY _____ | EXAMINED BY _____ |
| EXAMINED BY _____ | FILED _____ |
| SHEET 1328 11 | |

SURVEY

491.40

16+50
(16+58 Revised)

494.15

16+00
(16+08 Revised)

15+50

498.90

15+00

15+07
(Revised)

SURVEY

U

490
485

495
490
485
500
495
490

505
500
495

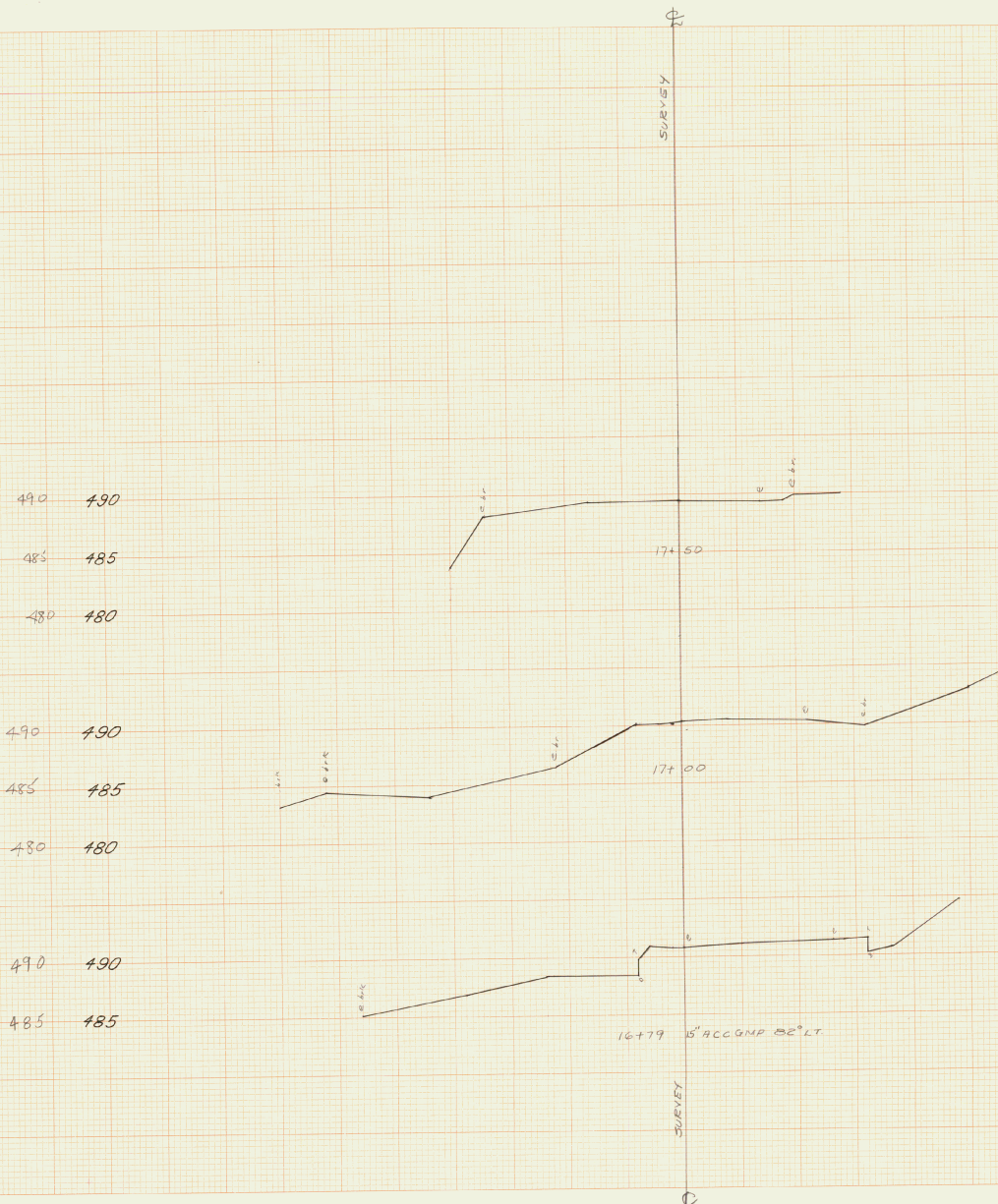
NOTE
WAP GRADE TO MEET
EXISTING ROAD C STA 16+50+

505

1 INCH = 5 FEET

Roadway Sections
Braitree Bridge

| | | | |
|---------------------|----------|------------|-----------|
| DESIGNED BY | Martin | CHECKED BY | |
| SECTIONS PLOTTED BY | G. W. W. | NO. | |
| PLANNED BY | | FILED | |
| EXAMINED BY | | SHEET | 389 OF 11 |



13.88
 STA 17+16.92 BACK =
 17+53.28 AHEAD
 16.36
 EO + 0.63
 7.40

1 INCH = 5 FEET

Roadway Sections
Braintree Bridge

| | |
|---------------------|----------------|
| LEVELS BY | Martin |
| SECTIONS PLOTTED BY | Guy W. CRO. BY |
| PLANNED BY | |
| EXAMINED BY | |
| NO. | FILED |
| SHEET | BRID OF 11 |