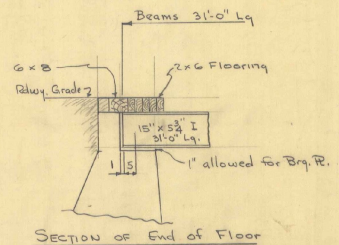


PLAN

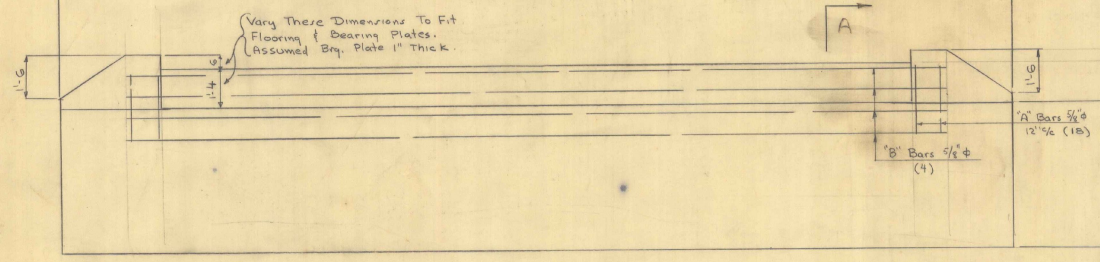


SECTION OF END OF FLOOR

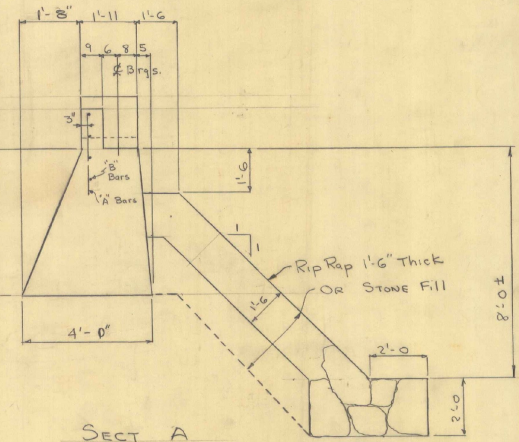
REINFORCING STEEL

Bar	SIZE	Nº READ.	Lgth.	Detail
A	3/8"φ	18	3'-6"	Straight
B	5/8"φ	4	17'-9"	"

Use this sheet in connection with SWF 12 except detail at end of floor shown on this sheet and bearing plate details to be worked up in field.



ELEVATION



SECT A

JAY
TOWN BRIDGE
DETAIL OF ABUTS.
Not to Scale
TH# 23,813 over Jay Branch

EST. QUANTITIES

	ABUT 1	ABUT 2	TOT.
CONC. CLASS D	13 CY	13 CY	26 CY
Reinforcing Steel	140 lbs	140 lbs	280 lbs
Rip Rap For Bank Protection	40 CY	40 CY	80 CY

Surveyed by	
Designed by	
Drawn by	EmB.
Traced by	
Checked by	HWS 4/24/19
Series	No. Filed
	Sheet 1 of 2 Sheets

Vermont Agency of
Transportation
PHASE 1-INTERSTATE
#122302-01



INITIALS

Hanger 2160^{DONE}

Bridge
1949

Jay
Town Bridge

1949

JAY

M

TH23, B13 over Jay Branch

New WF, Bm, Wood deck

1949