

Cutting & removal of these trees inside of the limits of the project shall be included in the unit price bid for common excavation including borrow.

**LIST OF SHEETS**

- Sheet 1 Plan
- 2 Profile
- 3 Superstructure Details
- 4 Abutment #1 Details
- 5 Abutment #2 Details
- 6 3rd Sheet S.B. No. 11: Barriades, Lights, Signs
- 7 3rd Sheet S.No. 30: Wood Guard Rail
- 8-11 Cross Sections

**LIST OF QUANTITIES**

Item No.	Description	Quantity
1	Common Excav. including borrow	25 cu.
15	Channel Excavation	360 cu.
16	Structure Excavation	73 cu.
22	Gravel Surface Course	20 cu. yd.
41A	Concrete Class 'A'	9 cu. yd.
41C	Concrete Class 'C'	37 cu. yd.
42	Reinforcing Steel	470 lbs.
43B	Steel Superstructure (100,000#)	1 L.S.
36	Temporary Bridge (Maintenance & Removal of Temp. Foot Bridge only)	1 L.S.
68	Rip Rap for Bank Protection (Heavy Type)	70 cu. yd.
78	Wood Guard Rail	48 L.F.
64	Structural Timber	73 M.M.

**BRIDGE DATA**

(Old Bridge is washed out)

NEW BRIDGE	
Type	Steel Truss, 4' Wood Floor
Roadway, Cl. Width	12'-0"
Roadway, Cl. Height	15'-0" min.
Waterway, Cl. Height	15'-0"
Waterway, Cl. Width	140'-0"
Length c.c. Brngs.	150'-0"
Length c.c. Back of Abutts.	153'-0"
Waterway	190'-0" on 2 Bridge

**WOOD GUARD RAIL LOCATION**

Left Sta. 0+42 to	Sta. 0+58 = 16 L.F.
Left Sta. 2+13 to	Sta. 2+21 = 8
Right Sta. 0+42 to	Sta. 0+58 = 16
Right Sta. 2+13 to	Sta. 2+21 = 8
Total 48 L.F.	

**ESTIMATED QUANTITIES**


Approved: *[Signature]* 1939  
DISTRICT HIGHWAY COMMISSIONER

Checked: *[Signature]* 1939  
BRIDGE ENGINEER

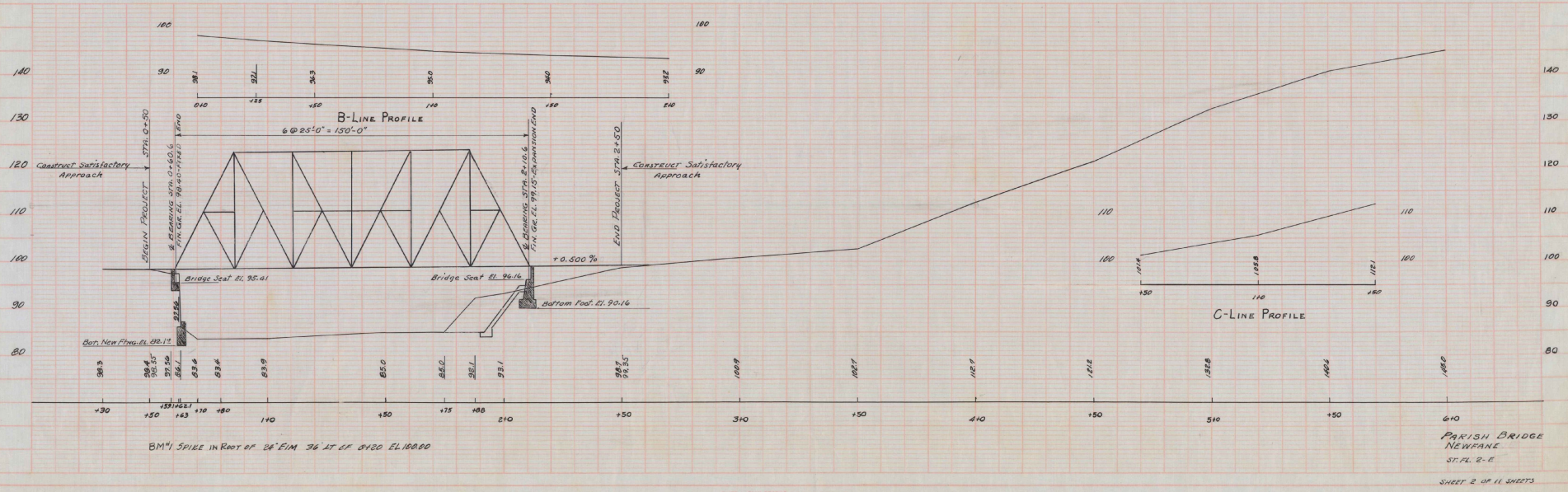
Approved: *[Signature]* 1939  
COMMISSIONER OF HIGHWAYS

PARISH BRIDGE  
NEWFANE, VT. 2-E  
FLOOD APRIL, 1939

Surveyed by  
Designed by  
Drawn by  
Traced by  
Checked by  
Series ST. PL. No. 2-E Filed  
Sheet 1 of 11 Sheets

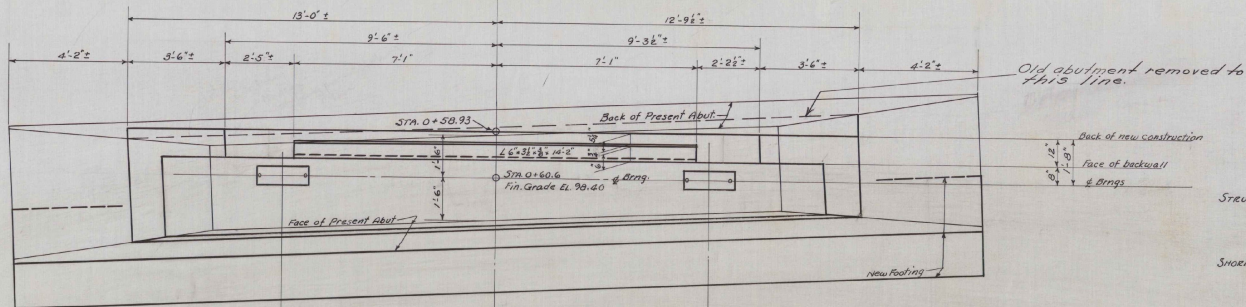
PLAN  
 DATE  
 DRAWN BY  
 CHECKED BY  
 APPROVED BY

NOTES  
 1. ALL DIMENSIONS ARE IN FEET UNLESS OTHERWISE SPECIFIED  
 2. ALL ANGLES ARE IN DEGREES UNLESS OTHERWISE SPECIFIED



PARISH BRIDGE  
 NEWARK  
 ST. PL. 2-E  
 SHEET 2 OF 11 SHEETS





REINFORCING STEEL				SHAPE
MARK	REQD.	SIZE	TOTAL LETH	
A	23	1/2"	4'-0"	2'-3" <sup>1/2"</sup> 2'-0"
B	6	1/2"	23'-0"	Straight
C	24	1/2"	2'-3"	Straight

**NOTES**

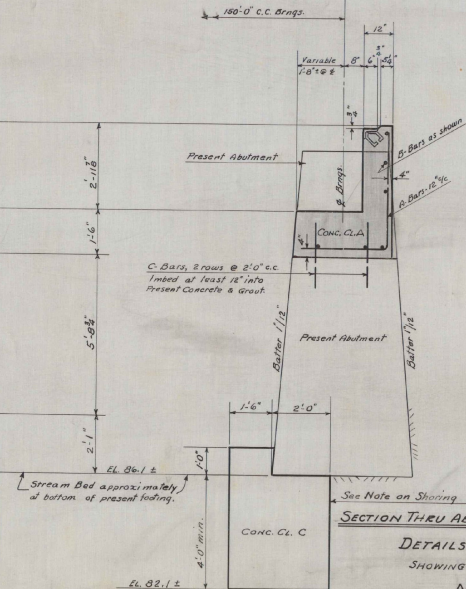
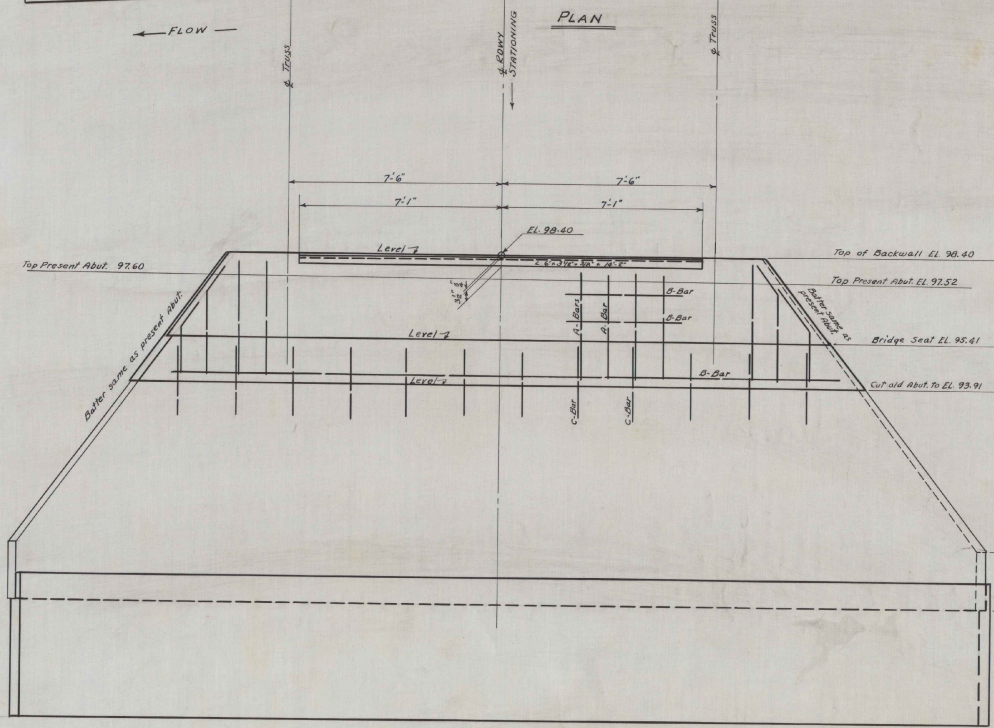
**STRUCTURE EXCAVATION** - Earth & concrete actually removed within the limits specified under Item #16, PARALLEL B, will be paid for as Structure Excavation. This shall apply to the top of the abutment above EL. 93.91 and to excavation for footing.

**SHORING** - The present abutment shall be shored in such a manner as to prevent its rotation or settlement during construction of new footing. Earth beneath back of present abutment shall be sheeted so as to prevent horizontal or vertical displacement. Such sheeting and bracing may be buried in the new footing unless otherwise directed by the engineer. Back fill in front of new footing shall be tamped or otherwise compacted to the satisfaction of the engineer.

**DOWELS** - Drilling for dowels and grouting dowels into place will be included as labor and materials incidental to the installation of contract items and will not be paid for directly.

**FOOTING** - Shall be concrete Class "C".

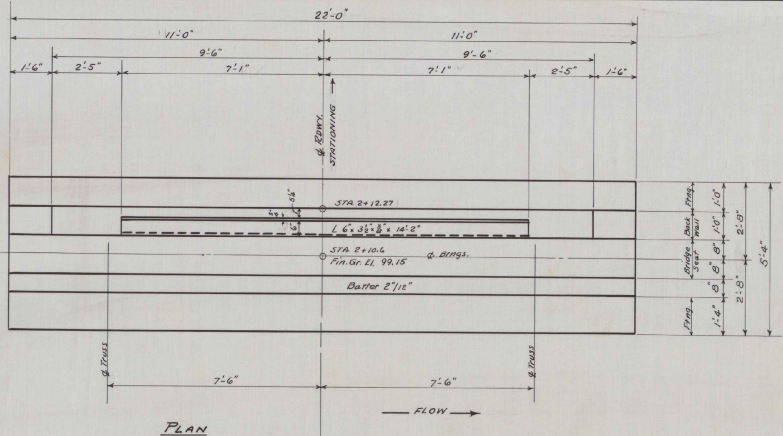
**CAP & BACKWALL** - Shall be concrete Class "A". Backwall concrete shall be poured after Superstructure steel is in place.



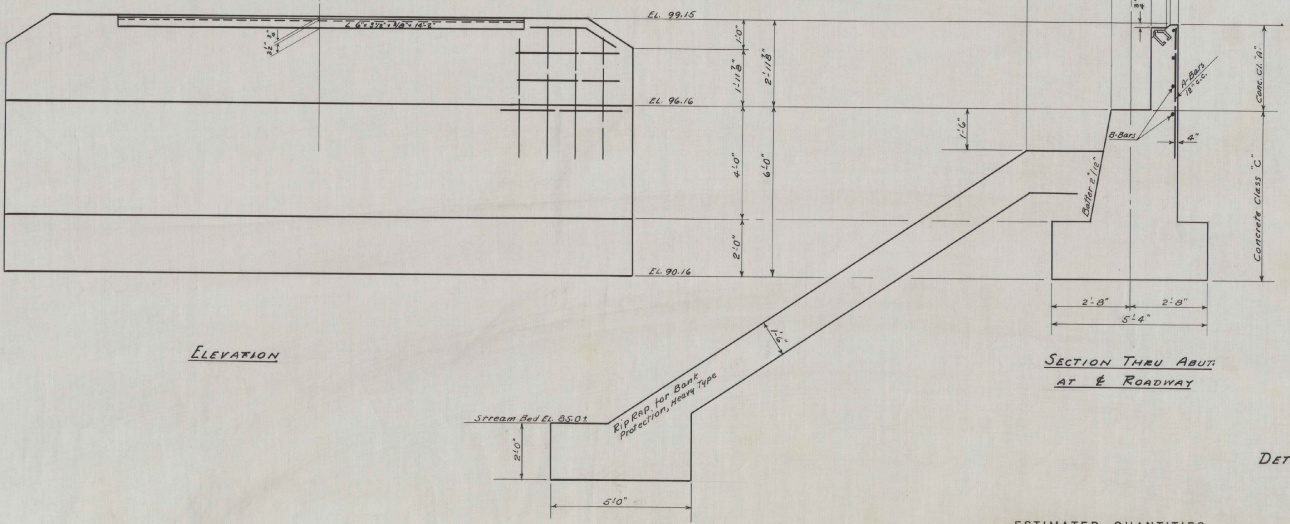
ESTIMATED QUANTITIES		NEWFANE, VT. PARISH BR.	
Structure Excar.	41 c.y.	Surveyed by	
Concrete Class "A"	7 c.y.	Designed by	J.G.G.
Concrete Class "C"	20 c.y.	Drawn by	J.G.G.
Reinforcing Steel	348 lbs	Traced by	D.W.P.
6'-3 1/2" x 8" in backwall is included with quantities on Superstructure Details Sheet.		Checked by	W.A.B.
		Series	ST. FL. No. 2-E
		Scale	2 in = 1 ft.
		Sheet	4 of 11 Sheets

**ELEVATION**

**SECTION THRU ABUTMENT**  
**DETAILS OF ABUTMENT #1**  
SHOWING NEW CAP & FOOTING



PLAN



ELEVATION

SECTION THRU ABUT AT ROADWAY

**REINFORCING STEEL**

MARK	REQD	SIZE	TOT. LENS.	SHAPE
A	21	1/2"	4'-0"	Straight
B	4	1/2"	21'-6"	Straight

**NOTES**  
 End limits of Rip Rap for Bank Protection (Heavy Type) shall be roed into the fill to a depth of 2'-0"  
 Stem & Footing of Abutment shall be Concrete Cl. "C"  
 Backwall shall be Concrete Class "A"

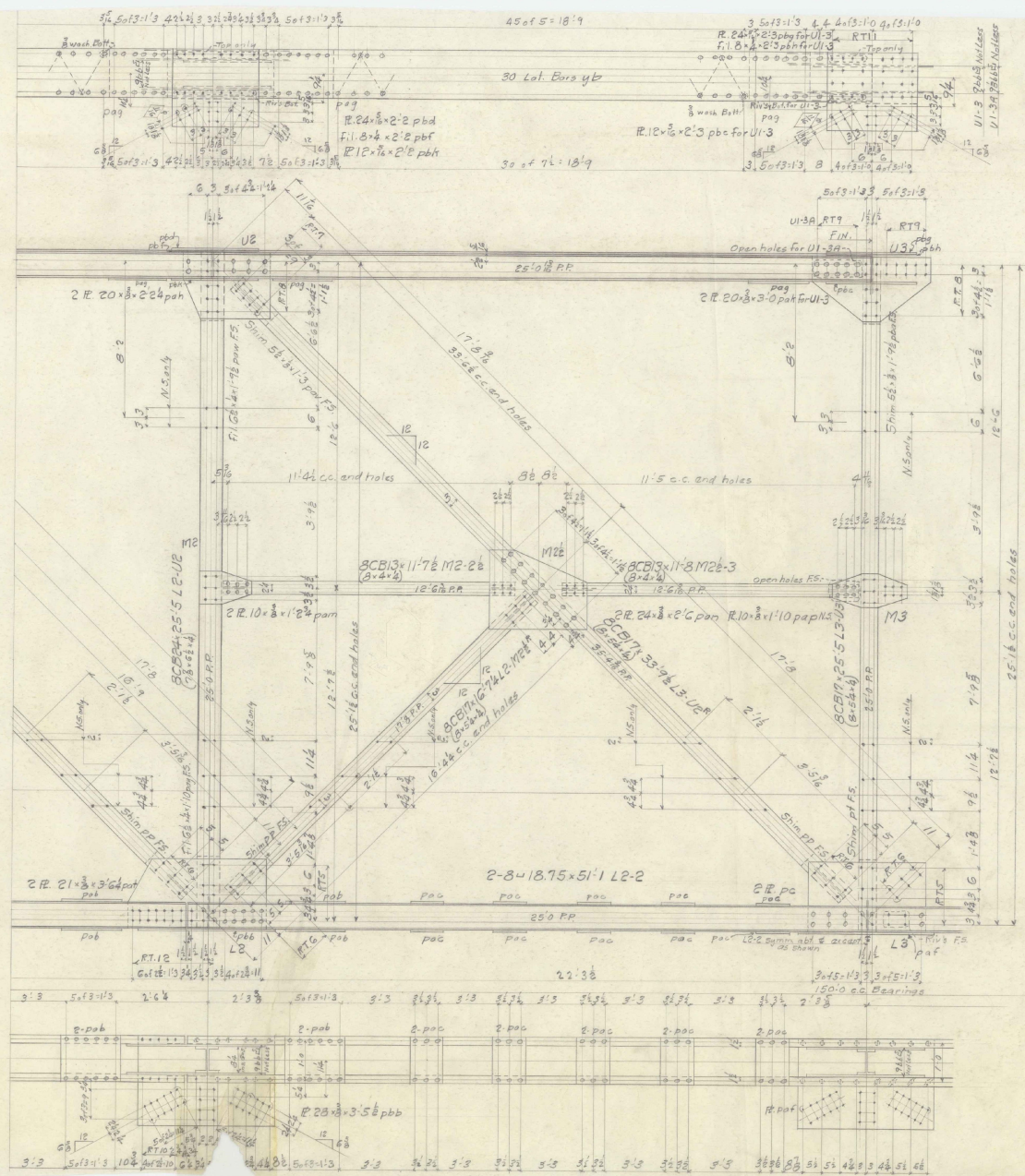
**DETAILS OF ABUTMENT #2  
 PARISH BRIDGE  
 NEWFANE, VT.**

ESTIMATED QUANTITIES		Scale 1/4" = 1'-0"
Channel Excavation	350 cy	Surveyed by Designed by J.G.G. Drawn by J.G.G. Traced by D.W.R. Checked by W.A.S. Series J7, PL, No. 2 E Sheet 5 of 11 Sheets
Structure Excavation	32 cy	
Concrete Class "A"	2 cy	
Concrete Class "C"	17 cy	
Reinforcing Steel	122 lbs	
Rip Rap for Bank Protection (Heavy Type)	70 cy	





TYPE	QTY	SIZE	DESCRIPTION
PLATE			
ANGLE			
PIPE			
WOOD			
BRACKET			
SCREW			
NUT			
WASHER			
DRILL BIT			
WELD ROD			
WELD			
PAINT			
OTHER			



REQUIRED		
2	End Posts	EP1R
2	"	EP1L
2	Top Chords	U1-3
2	"	U1-3A
2	Bot. "	L0-2R
2	"	L0-2L
4	Verticals	L1-U1
4	"	L2-U2
2	"	L3-U3
2	Diagonals	L1-M1R
2	"	L1-M1L
2	"	L1-M1L
2	"	L2-U1R
2	"	L2-U1L
2	"	L2-M2R
2	"	L2-M2L
2	"	L3-U2R
2	"	L3-U2L
4	Horizontals	M2-1
4	"	M2-2
4	"	M2-3
10	Railing Clips	M2R
10	"	M2L
10	"	M3
2	"	M4R
2	"	M4L
2	"	M5R
2	"	M5L
2	"	M6R
2	"	M6L
2	"	M7R
2	"	M7L
4	"	M1

NOTES:-  
 Rivets - 3/8"  
 Holes - 3/8" Unless noted  
 Paint - Yes  
 Surfaces riveted or bolted in contact in shop or field - yes  
 Holes marked RT to be punched 1/8"  
 and reamed to 13/16" to a metal template  
 or drilled.

STATE OF VERMONT  
 PARISH BRIDGE #2E  
 NEWFANE, VT.

TRUSS DETAILS  
 AMERICAN BRIDGE COMPANY  
 DRAWINGS MADE AT ELIZONA PLANT  
 WORK FABRICATED AT ELIZONA PLANT  
 IN CHARGE OF MALONEY  
 DRAW. MADE BY FTS DATE 10-3-39  
 DRAW. CHECKED BY W.C. DATE 10-10-39  
 ORDER No. H266T SHEET No. 1A

SHOP FILE SLABED





AMERICAN BRIDGE COMPANY

SKETCH	LINE NO.	NO. PCS.	MARK	MATERIAL		CALCULATED WEIGHT FOR ONE MEMBER	ORDERED			SHIPMENTS
				SHAPE	LENGTH FT. INB.		NO. PCS.	LENGTH FT. INB.	ITEM	
<p>SWEDGE BOLTS</p> <p>Thread 3</p> <p>X1 1'-10 1/2</p> <p>X2 1'-7 1/2</p> <p>SHIP IN ADVANCE</p>	1									
	2									
	3									
	4	4	X1	1 1/2" Swaged	1 10 1/2					A
	5	4		Washers - 1/2 holes	3 1/2 4 1/2					
	6	4		Hex Nuts, 1/2" tap						
	7									
	8	4	X2	1 1/2" Swaged	1 7 1/2					A
	9	4		Washers - 1/2 holes	3 1/2 3 1/2					
	10	4		Hex Nuts, 1/2" tap						
	11									
	12									
	13									
	14									
	15									
	16									
	17									
	18									
	19									
	20									
	21									
	22									
	23									
	24									
	25									
	26									
	27									
	28									
	29									
	30									
	31									
	32									
	33									
	34									
	35									
	36									
	37									
	38									
	39									
	40									
	41									
	42									
	43									
	44									
	45									
	46									

No PAINT

DATE	DATE
NAME	DRAWINGS
LGK 9 25 39	Elmira
	FABRICATION
	Elmira

ORDER No. H2868M

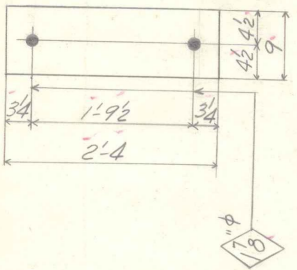
SHEET No. C1

NAME OF STRUCTURE

STATE OF VERMONT ~ PARISH BRIDGE No. 2E ~ NEWFANE, VT. 24

AMERICAN BRIDGE COMPANY

SKETCH	LINE NO.	NO. PCS.	MARK	MATERIAL		CALCULATED WEIGHT FOR ONE MEMBER	ORDERED		SHIPMENTS
				SHAPE	LENGTH FT. INB.		NO. PCS.	LENGTH FT. INB.	
	1								
	2								
	3								
	4								
	5								
	6								
	7	12	MI	7/16" Rod	40' 0" 2 4			Ref. 5877	
	8								
	9				1/2 gal. Red Lead Paste				SK
	10								
	11								
	12								
	13								
	14								
	15								
	16								
	17								
	18								
	19								
	20								
	21								
	22								
	23								
	24								
	25								
	26								
	27								
	28								
	29								
	30								
	31								
	32								
	33								
	34								
	35								
	36								
	37								
	38								
	39								
	40								
	41								
	42								
	43								
	44								
	45								
	46								

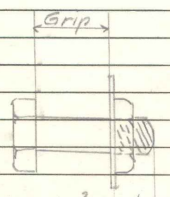


DATE	DATE	DRAWINGS	ORDER No.	SHEET No.
NAME	NAME	NAME	NAME	NAME
RAF 9 28 39	W.C. 10 10 39	Elmira FABRICATION	42868 <sup>M</sup>	C 2

STATE OF VERMONT PARISH BRIDGE No. 2E NEWFANE, VERMONT. 2

AMERICAN BRIDGE COMPANY

LINE NO.	NO. PCS.	DIAM.	RIVETS		BOLTS				GRIP	CALCULATED WEIGHT TOTAL	SHIPMENTS
					LENGTH UNDER HEAD	HEAD	NUT	WASHER			
1											
2											
3											
4	125	1/2 hole			Hx	Anco	2 1/2		5/8		
5	380	"			"	"	"		1/6		
6	88	"			"	"	"		5/8		
7	410	"			"	"	"		13/16		
8	140	"			"	"	"		5/8		
9	75	"			"	"	"		1/2		
10	420	"			"	"	"		1		
11	260	"			"	"	"		1 1/2		
12	150	"			"	"	"		1 1/8		
13	18	"			"	"	"		1 1/4		
14	10	"			"	"	"		1 1/2		
15	52	"			"	"	"		1 3/8		
16	10	"			"	"	"		1 1/2		
17	52	"			"	"	"		1 1/2		
18	10	"			"	"	"		1 1/2		
19	18	"			"	"	"		1 3/8		
20											
21	2218	Washers 2 1/2 x 1 1/2									
22											
23											
24	115	1/2 hole			Hx	Anco	2 1/2		9/16		
25	75	"			"	"	"		1 1/2		
26	52	"			"	"	"		1 1/2		
27											
28	242	Washers 2 1/2 x 1 1/2									
29											
30											
31	450	3/4			1 1/2 Hx	Anco					
32	785	"			1 1/4	"	"				
33	50	"			2	"	"				
34											
35	190	5/8			1 1/2	"	"				
36	105	"			1 1/4	"	"				
37											
38											
39											
40											
41											
42											
43											
44											
45											
46											



Areas for 3/4 x 1 1/2  
" " 5/8 x 1 1/2

FIELD RIVETS AND BOLTS

DATE	DATE
10/21/27	

DRAWINGS  
Elmira.  
FABRICATION  
Elmira.

ORDER No. H-2868<sup>m</sup>

PAGE No. C3

NAME OF STRUCTURE

State of Vermont, Parish Bridge #2-E, Newfane, VT. 127

AMERICAN BRIDGE COMPANY

LINE NO.	NO. PCS.	DIAM.	RIVETS		BOLTS				GRIP	THICKNESS OF MATERIAL CONNECTED			LOCATION
					LENGTH UNDER HEAD	HEAD	NUT	WASH-ER		TYPE OF BOLT			
1													
2													U1
3	64	3/4			Hx	Proc	2 3/8	Turned Bolts	1/16	5/16	3/8		Vert. & Diag
4	64	"			"	"	"	"	1/16	5/16	3/8		"
5	56	"			"	"	"	"	5/8	3/4	3/4		U1-3
6	32	"			"	"	"	"	1	5/16	3/8		"
7	72	"			"	"	"	"	1	5/16	3/8		P2 to U1-3
8	80	"			"	"	"	"	1 1/8	5/16	3/8		" EPI
9	36	"			"	"	"	"	1 1/8	5/16	3/8		P3 to U1-3 = EPI
10													
11													Portal.
12	24	"			"	"	"	"	1 1/8	5/16	3/8		PS3 & EPI
13	24	5/8			"	"	"	"	1 1/8	5/16	3/8		"
14	48	"			"	"	"	"	1 1/8	5/16	3/8		" PS2
15	48	"			"	"	"	"	1 1/8	5/16	3/8		PS1-2 & P2
16	36	"			"	"	"	"	1 1/8	5/16	3/8		" P3
17													
18													
19													U2
20													
21	40	3/4			"	"	"	"	1	5/16	3/8		Vert.
22	16	"			"	"	"	"	1 1/2	5/16	3/8		"
23	32	"			"	"	"	"	1 1/2	5/16	3/8		Diag
24	32	"			"	"	"	"	1 1/2	5/16	3/8		"
25													
26	64	"			"	"	"	"	1	5/16	3/8		pbd
27	48	5/8			"	"	"	"	1 1/2	5/16	3/8		TS1
28	24	3/4			"	"	"	"	1 1/2	5/16	3/8		SB1 - Vert.
29													
30													
31													U3
32	12	"			"	"	"	"	1 1/2	5/16	3/8		Vert.
33	8	"			"	"	"	"	1 1/2	5/16	3/8		"
34	8	"			"	"	"	"	1 1/2	5/16	3/8		"
35	12	"			"	"	"	"	1	5/16	3/8		" SB1
36	40	"			"	"	"	"	5/8	3/4	3/4		U1-3A
37	8	"			"	"	"	"	1 1/2	5/16	3/8		pbc
38	24	"			"	"	"	"	5/8	3/4	3/4		pbg
39	32	"			"	"	"	"	1	5/16	3/8		"
40	24	5/8			"	"	"	"	1 1/2	5/16	3/8		TS1
41													
42													Top Bracing
43	24	"			1 1/2 Hx	Proc	and.		5/8	3/4	3/4		T1-2-3
44	72	"			1 1/2	"	"	"	5/8	3/4	3/4		"
45	96	"			1 1/2	"	"	"	5/8	3/4	3/4		"
46	80	"			1 1/2	"	"	"	5/8	3/4	3/4		" Splice

FIELD RIVETS AND BOLTS

DATE	10/21/19
NAME	
DATE	
NAME	

DRAWINGS	Elmira
FABRICATION	Elmira
ORDER No.	H2868

SHEET No.  
**EF 1**

NAME OF STRUCTURE

State of Vermont Parich Bridge #2-E. Newfane, VT.

DOWM128  
ERECTORS LIST  
FIELD RIVETS AND BOLTS  
**AMERICAN BRIDGE COMPANY**

LINE NO.	NO. PCS.	DIAM.	RIVETS		BOLTS				GRIP	THICKNESS OF MATERIAL CONNECTED			LOCATION
					LENGTH UNDER HEAD	HEAD	NUT	WASHER		TYPE OF BOLT			
1													
2									TOP	Bracing			
3	24	3/4"			1 1/2	Hx	Axco	ord	3/4	3/8	5/16		SB2 to vert.
4	24	"			1 1/2	"	"	"	3/8	3/4	5/16		" SB1
5													
6													
7									Mid-Trauss	Bracing			
8	24	"			1 1/2	"	"	ord	3/4	3/8	5/16		M2-1 to EP
9	24	"			1 1/2	"	"	"	3/4	"	5/16		" "
10	48	"			1 1/2	"	"	"	3/4	3/8	5/16		" L1-U1
11	24	"			1 1/2	"	"	"	3/4	3/8	5/16		L1-M2 to EP
12	24	"			1 1/2	"	"	"	3/8	"	5/16		" "
13									M1 1/2				
14	48	"			1 1/2	"	"	ord	3/4	3/8	5/16		L1-M1 1/2 to L2-U1
15													
16									M2				
17	48	"			1 1/2	"	"	ord	3/4	3/8	5/16		M2-2 1/2 * L2-U2
18									M2 1/2				
19	96	"			1 1/2	"	"	ord	5/8	3/4	3/8		M2-2 1/2 M2 1/2-3
20	48	"			1 1/2	"	"	"	3/4	3/8	5/16		L2-M2 1/2
21									M3				
22	24	"			1 1/2	"	"	ord	5/8	3/4	3/8		M2 1/2-3
23	24	"			1 1/2	"	"	"	3/4	3/8	5/16		"
24													
25													
26									LO				
27	112	"			Hx	Axco	2 3/8	Turned Bolts	1	5/8	3/8		EP1
28	48	"			"	"	"	"	1 1/2	"	3/8		"
29	8	"			"	"	"	"	1 1/2	"	7/16		"
30	32	"			"	"	"	"	1/6	5/16	3/8		ab 2
31	16	"			"	"	"	"	1	1	3/8		"
32	32	"			"	"	"	"	3/4	3/8	5/16		hb
33	32	"			"	"	"	"	1 1/2	3/8	3/8		"
34	16	"			"	"	"	"	1 1/2	3/8	5/16		F1
35	16	"			"	"	"	"	1 1/2	"	7/16		"
36	32	"			"	"	"	"	1 1/2	7/16	3/8		"
37													
38									L1				
39	72	"			"	"	"	Turned Bolts	1 1/2	5/16	3/8		vert. 2 Diag
40	56	"			"	"	"	"	1 1/2	5/16	3/8		" "
41	16	"			"	"	"	"	1 1/2	5/16	3/8		"
42	16	"			"	"	"	"	1 1/2	3/8	5/16		F2
43	16	"			"	"	"	"	1 1/2	"	7/16		"
44	32	"			"	"	"	"	1 1/2	7/16	3/8		"
45	16	"			"	"	"	"	1 1/2	3/8	7/16		pl. pc
46													

FIELD RIVETS AND BOLTS

DATE	10/5/19
NAME	EMIRA

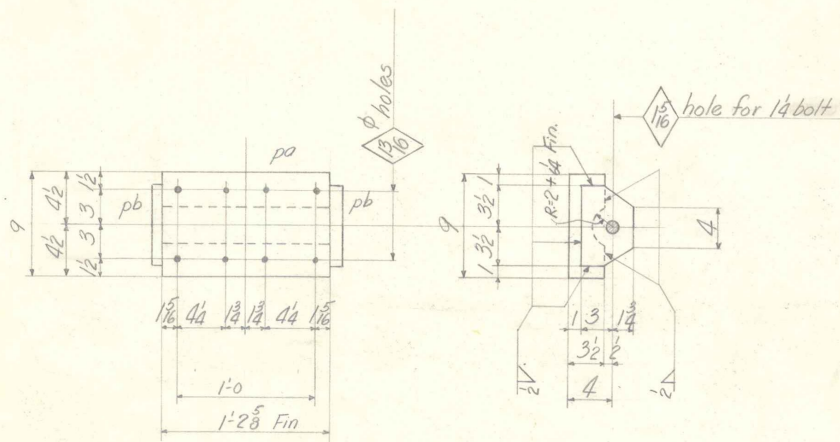
DATE	
DRAWINGS	EMIRA
FABRICATION	EMIRA

ORDER No. 142868 SHEET No. EF 2

NAME OF STRUCTURE

State of Vermont: Parish Bridge #2-E. Newfane Vt.

10-1-1917  
 SKETCH SHEET  
**AMERICAN BRIDGE COMPANY**



P1

Plates must be straight and true to dimensions given.

Plates P1 to be shop riveted to L0-2 detailed on Sheet 1B

NO. PCS.	MATERIAL			MARK	CALCULATED WEIGHT FOR ONE SHOP. PIECE	ORDERED		NO. PCS.	MATERIAL			MARK	CALCULATED WEIGHT FOR ONE SHOP. PIECE	ORDERED	
	SHAPE	LENGTH				ITEM	SHAPE		LENGTH		ITEM				
		FT.	INS.							FT.	INS.				
4	PLATES			P1											
4	P1s	9	3 1/2					A							
8	P1s	7	2					A							

Paint - yes. Surfaces welded in contact in shop - No. one coat of white. Fin surfaces - lead and tallow.

RIVETS	HOLES	DATE	DATE	DRAWINGS
125	Noted	EMH 9 26 37	19	Elmira FABRICATION
		H.C. 10 4 37		Elmira

ORDER NO.	SHEET NO.
H2868 <sup>S</sup>	P1

STATE OF VERMONT PARISH BRIDGE No 2E NEWFANE, VERMONT

298

DEOM837  
ERECTORS LIST  
FIELD RIVETS AND BOLTS  
**AMERICAN BRIDGE COMPANY**

LINE NO.	NO. PCS.	DIAM.	RIVETS		BOLTS				GRIP	THICKNESS OF MATERIAL CONNECTED	LOCATION
					LENGTH UNDER HEAD	HEAD	NUT	WASH-ER			
1											
2											
3	48	3/4									
4	48	"									Diag
5	8	"									vert.
6	24	"									
7	16	"									
8	128	"									
9	44	"									Web splice. fig. "
10											
11	16	"									F3
12	16	"									
13	32	"									
14											
15											
16											
17	28	"									Diag & vert
18	36	"									"
19	8	"									vert.
20	8	"									F3
21	8	"									
22	16	"									
23	8	"									pl. pc
24											
25											
26											
27	60	"									Floor. ED1 & F1
28											
29	60	"									Stringer & F1
30	150	"									" F2-3
31											
32	288	"									L1-2 to B. chords.
33	24	"									" splice.
34	12	"									" S2
35											
36											
37	88	"									Hubguard.
38	36	"									M1-2-3-6 & TRUSS M4-5-7
39											
40	136	"									Clips to Hubguard.
41	136	"									Hubguard to Vert.
42	8	"									HG5
43											
44											
45											
46											

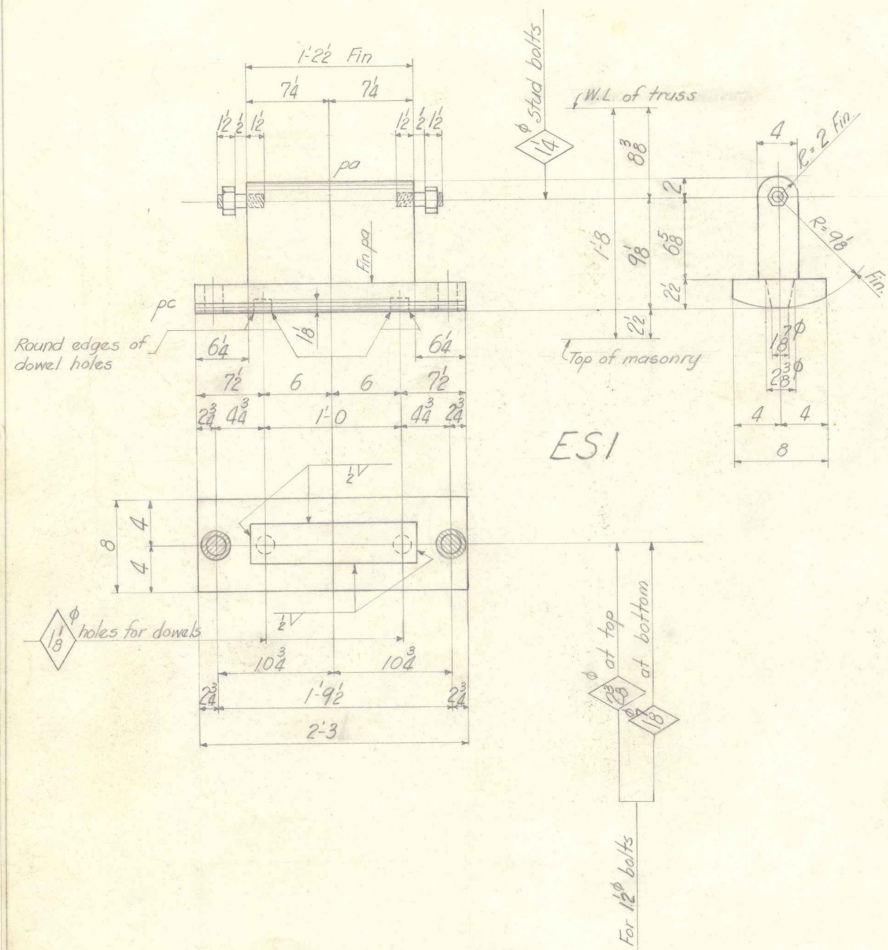
FIELD RIVETS AND BOLTS

DATE	DATE
10/31/57	

DRAWINGS	ORDER No.	SHEET No.
EMM.	H2868	EF3
FABRICATION		
EMM.		

State of Vermont. Parish Bridge #3-E. Newfane, Vt.

AMERICAN BRIDGE COMPANY



ESI

NO. PCS.	MATERIAL			CALCULATED WEIGHT FOR ONE SHIP. PIECE	ORDERED		NO. PCS.	MATERIAL			CALCULATED WEIGHT FOR ONE SHIP. PIECE	ORDERED	
	SHAPE	LENGTH FT. INS.	MARK		ITEM	SHAPE		LENGTH FT. INS.	MARK	ITEM			
	2 ROCKER PEDESTALS												
	ESI												
2	P. 1 1/2" Fin 2 x 4	8 3/8" Fin 2	pa		A								
2	P. 8 x 2 1/2" Fin 1	2 3"	pc	8-2 1/2	S								
4	Stud bolts 1/4"	3 1/2"			S								
4	Hex nuts 1/4"	tap			S								

Paint - y.e.s. Surfaces welded in contact in shop - No. One coat of white Fin. surfaces - lead and follow

RIVETS	HOLES	DATE	NAME
	Hs	9-26-39	EWH
	Noted	11-6-10-4-39	

DATE	NAME
1	Elmira
10	Elmira

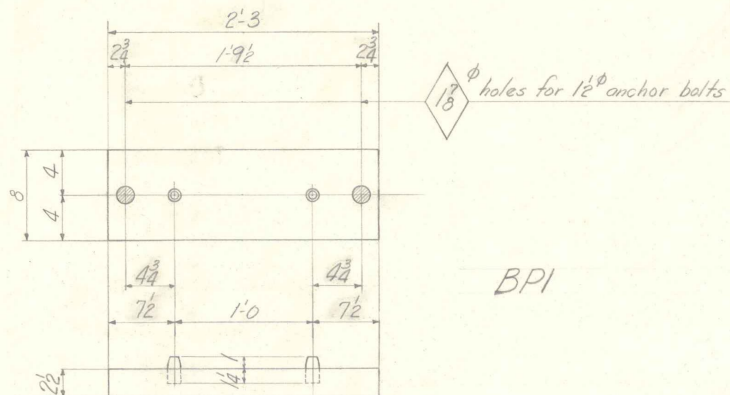
DRAWINGS	ORDER No.	SHEET No.
Elmira FABRICATION	42868 <sup>S</sup>	F/

NAME OF STRUCTURE

STATE OF VERMONT PARISH BRIDGE No 2E NEWFANE, VERMONT 29

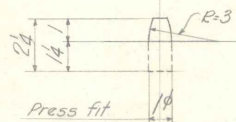


12-5074-ARG  
 SKETCH SHEET  
**AMERICAN BRIDGE COMPANY**



BPI

Press flat



DETAIL OF DOWELS

NO. PGS.	MATERIAL			CALCULATED WEIGHT FOR ONE SQ. FT. SURF. PIECE	ORDERED		NO. PGS.	MATERIAL			CALCULATED WEIGHT FOR ONE SQ. FT. SURF. PIECE	ORDERED	
	SHAPE	LENGTH FT. INS.	MARK		ITEM	SHAPE		LENGTH FT. INS.	MARK	ITEM			
	2	MASONRY PLATES	BPI										
	4	Dowels 1 1/4"	24 Fin. all over										
	2	P. B x 2 1/2	2 3										

Paint - yes  
 Fin. surfaces - one coat of white lead and tallow

RIVETS HOLES  
 H5 noted

DATE  
 9 26 39

DRAWINGS  
 Elmira FABRICATION  
 Elmira

ORDER No. H2868<sup>S</sup>

SHEET No. F2

STATE OF VERMONT PARISH BRIDGE No 2E NEWFANE, VERMONT 288



RIVETS

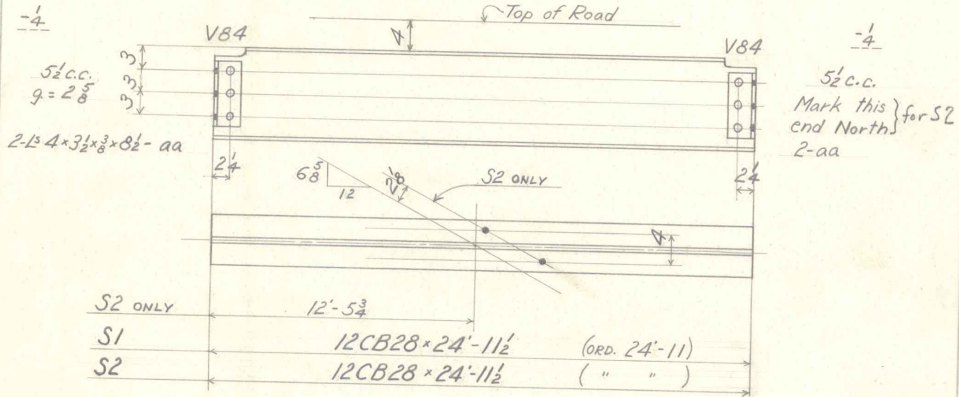

SKETCH SHEET

AMERICAN BRIDGE COMPANY

BOLTS

Hi. Nut

Dia.

REQUIRED		
24	STRINGERS	S1
6	"	S2

Surfaces Bolted or Riveted in Contact in Field or Shop - PAINT

STRINGERS	RIVETS	HOLES	DATE	DATE	DRAWINGS	SHOP BILL	131
PAINT Yes	3	13	FE.6	9 29 39	Elmira	ORDER No.	SHEET No.
	4	16	W.C.	10 11 39	Elmira	H2868 <sup>B</sup>	F 5

NAME OF STRUCTURE

STATE OF VERMONT

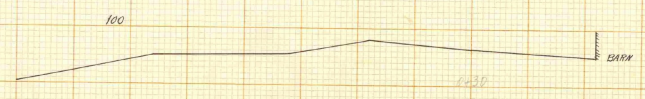
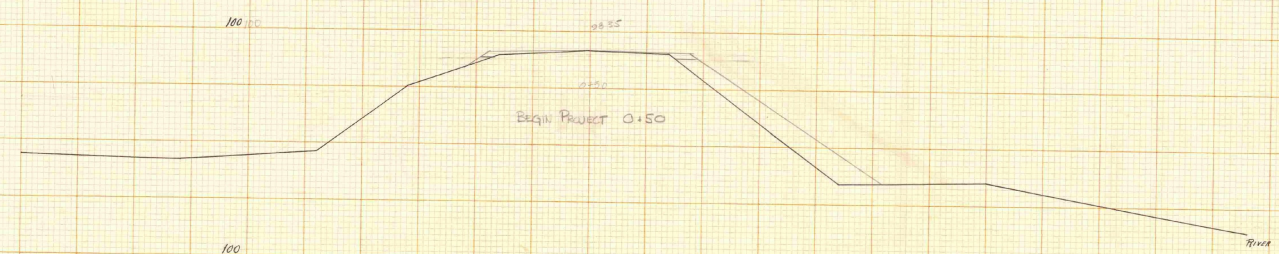
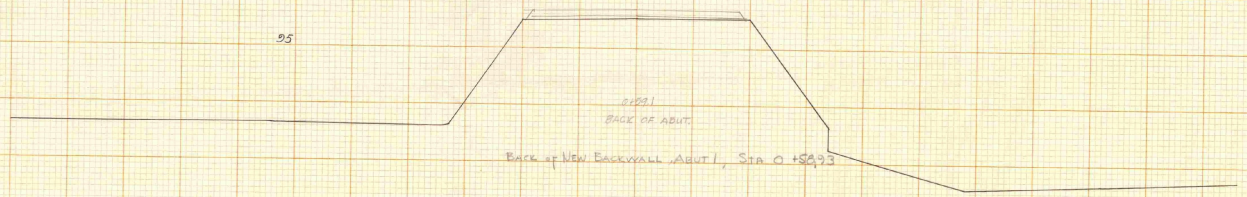
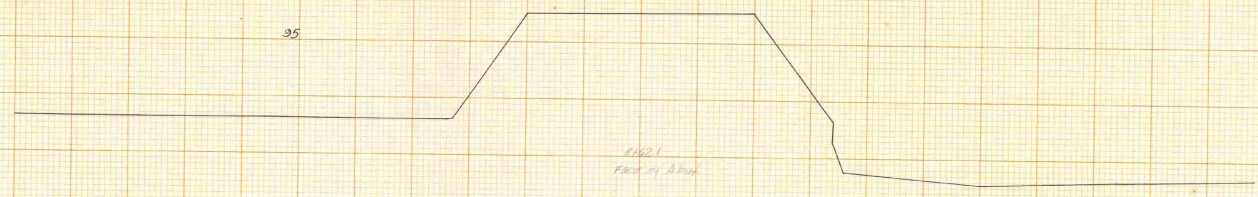
- PARISH BRIDGE No 2 E

- NEWFANE, VERMONT





FED. ROAD DIST. NO.	STATE	FED. AID PROJ. NO.	SHEET NO.	TOTAL SHEETS
0	VT			



*Charles Frank Sledge*

LEVELS BY WAB

SECTION PLOTTED BY KAR

PLANNED BY \_\_\_\_\_

EXAMINED BY \_\_\_\_\_

SERIES F NO. 25 OF 11

HEPPELL & ESSER CO.  
NEW YORK

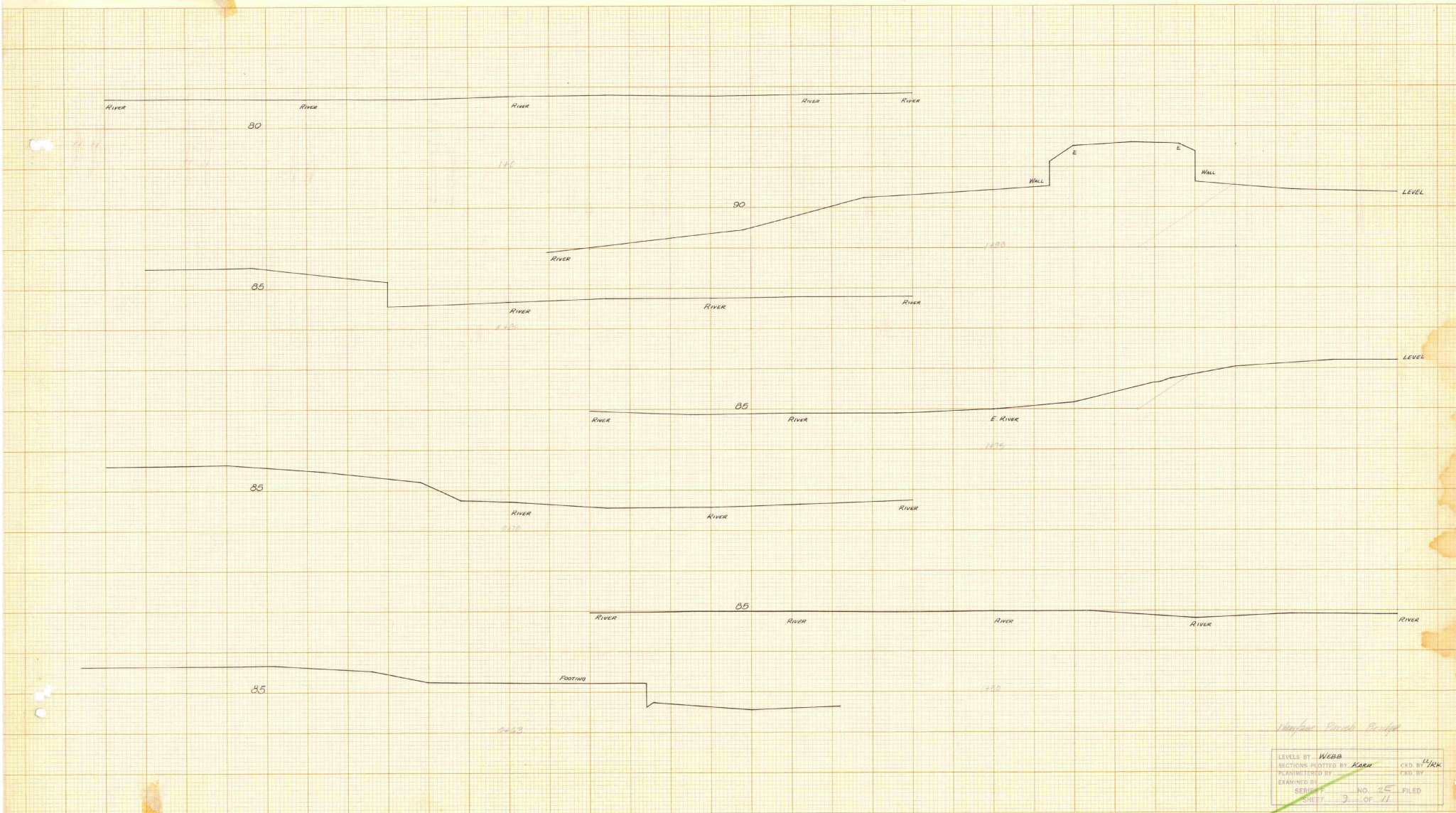
STANDARD  
CRISIS SECTION TO BE  
USED

HEPPELL & ESSER CO.  
NEW YORK

STANDARD  
CRISIS SECTION TO BE  
USED

①

FED. ROAD DIST. NO.	STATE	FISCAL YEAR	FED. AID PROJ. NO.	SHEET NO.	TOTAL SHEETS
9	Vt.				

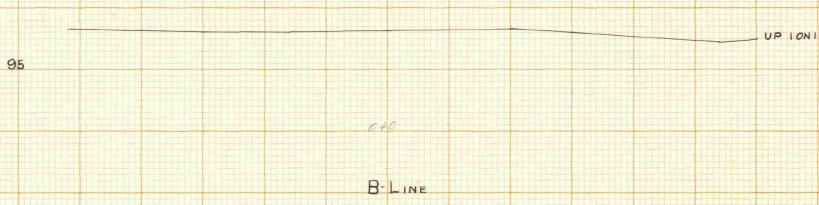
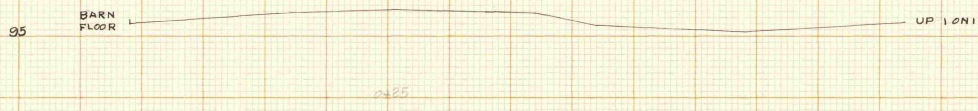
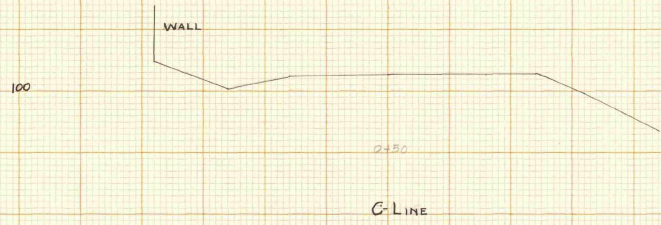


LEVELS BY Webb  
 SECTIONS PLOTTED BY RANK  
 PLANIMETERED BY  
 EXAMINED BY  
 SERIES NO. 25 FILED  
 SHEET 9 OF 11

*Wapoor Canal Bridge*

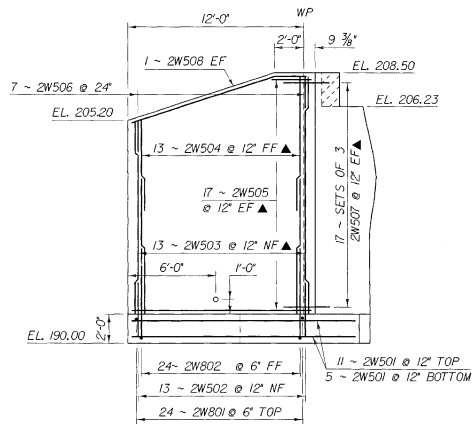


FED. ROAD DIST. NO.	STATE	FED. AID PROJ. NO.	FISCAL YEAR	SHEET NO.	TOTAL SHEETS
9	VT.				



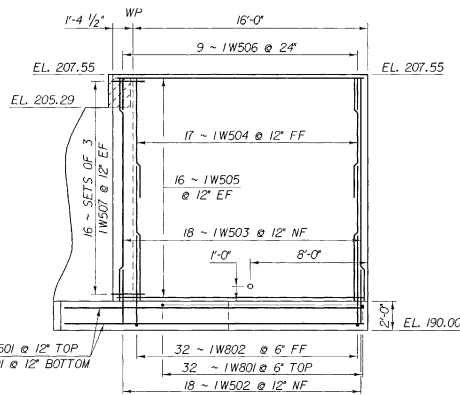
*Marjorie Benson Fudge*

LEVELS BY *Webb*  
 SECTIONS PLOTTED BY *Karr* CHD SH. *4/22*  
 EXAMINED BY  
 SHEETS NO. *2-61* FILED  
 SHEET *11* OF *11*



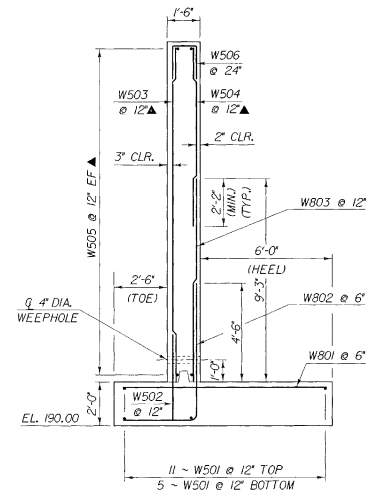
WINGWALL NO. 2 ELEVATION

SCALE: 1/4" = 1'-0"



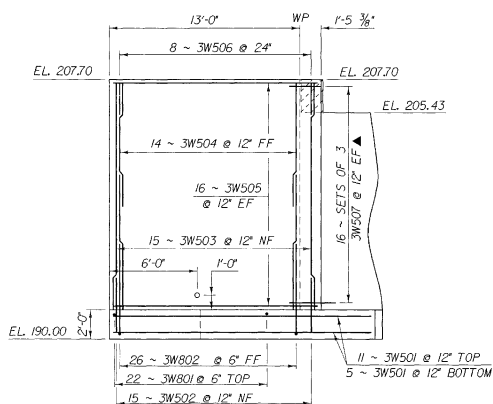
WINGWALL NO. 1 ELEVATION

SCALE: 1/4" = 1'-0"



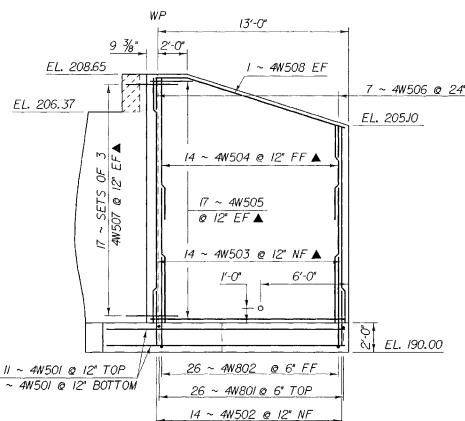
WINGWALL TYPICAL SECTION

SCALE: 3/8" = 1'-0"



WINGWALL NO. 3 ELEVATION

SCALE: 1/4" = 1'-0"



WINGWALL NO. 4 ELEVATION

SCALE: 1/4" = 1'-0"

**NOTE:**

- NF - NEAR FACE
  - FF - FAR FACE
  - EF - EACH FACE
  - ▲ - CUT TO FIT IN FIELD
- PROVIDE 3" CONCRETE COVER FOR REINFORCING STEEL UNLESS THE PLANS SPECIFY OTHERWISE.

**STATE OF VERMONT AGENCY OF TRANSPORTATION**

Town Of	WILLISTON	Bridge No.	14
Highway No.	T. H. 6	Log Sta.	
		Rev. Sta.	58 + 0'
<b>T. H. 6 OVER THE ALLEN BROOK</b>			
<b>WINGWALL DETAILS</b>			
Designed By	G. COLGROVE	Drawn By	G. ROY
Checked By		Date	12/94
D.W.N.E		Bridge Design Supervisor	J. H. WEAVER
PROJECT	WILLISTON	Date	7/95
		PROJECT NO.	TH 3418
I.G.C. Info. /str.3/63548/sc548ob.dgn		sc548b.dwg	
Bridge Sheet No.		Sheet	43 of 55

Bridge  
1939

Newfane  
ST FL. #2 - E

1939