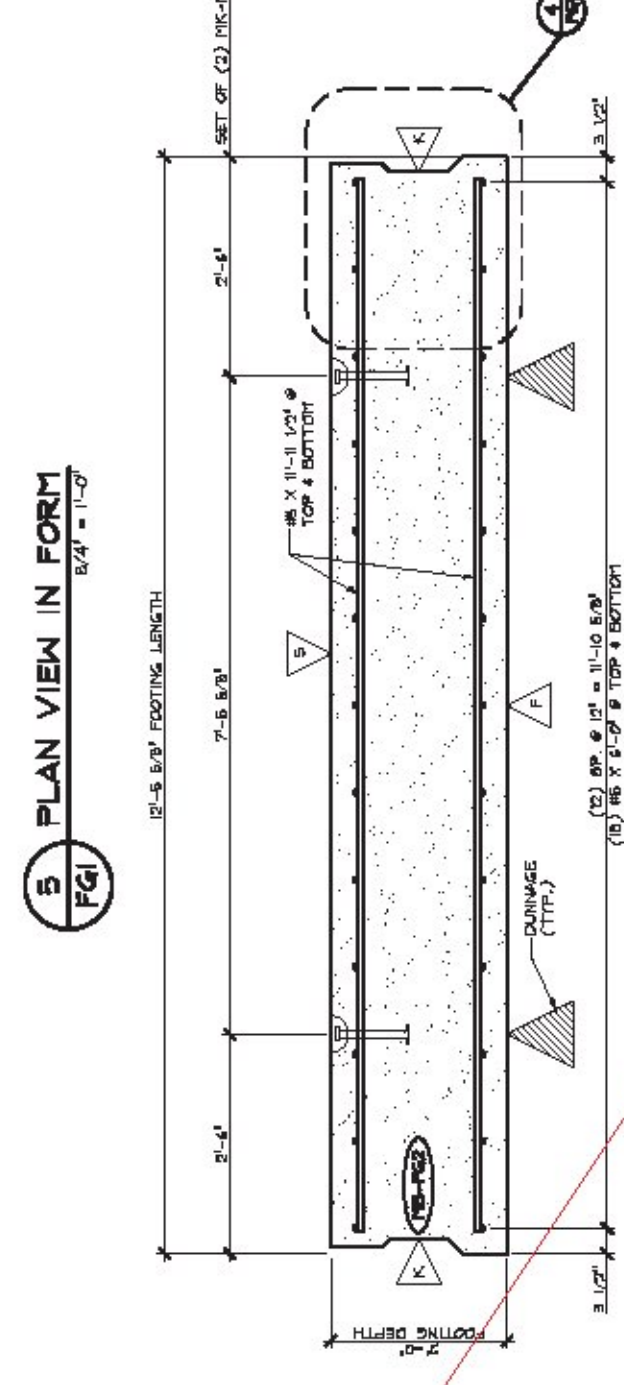
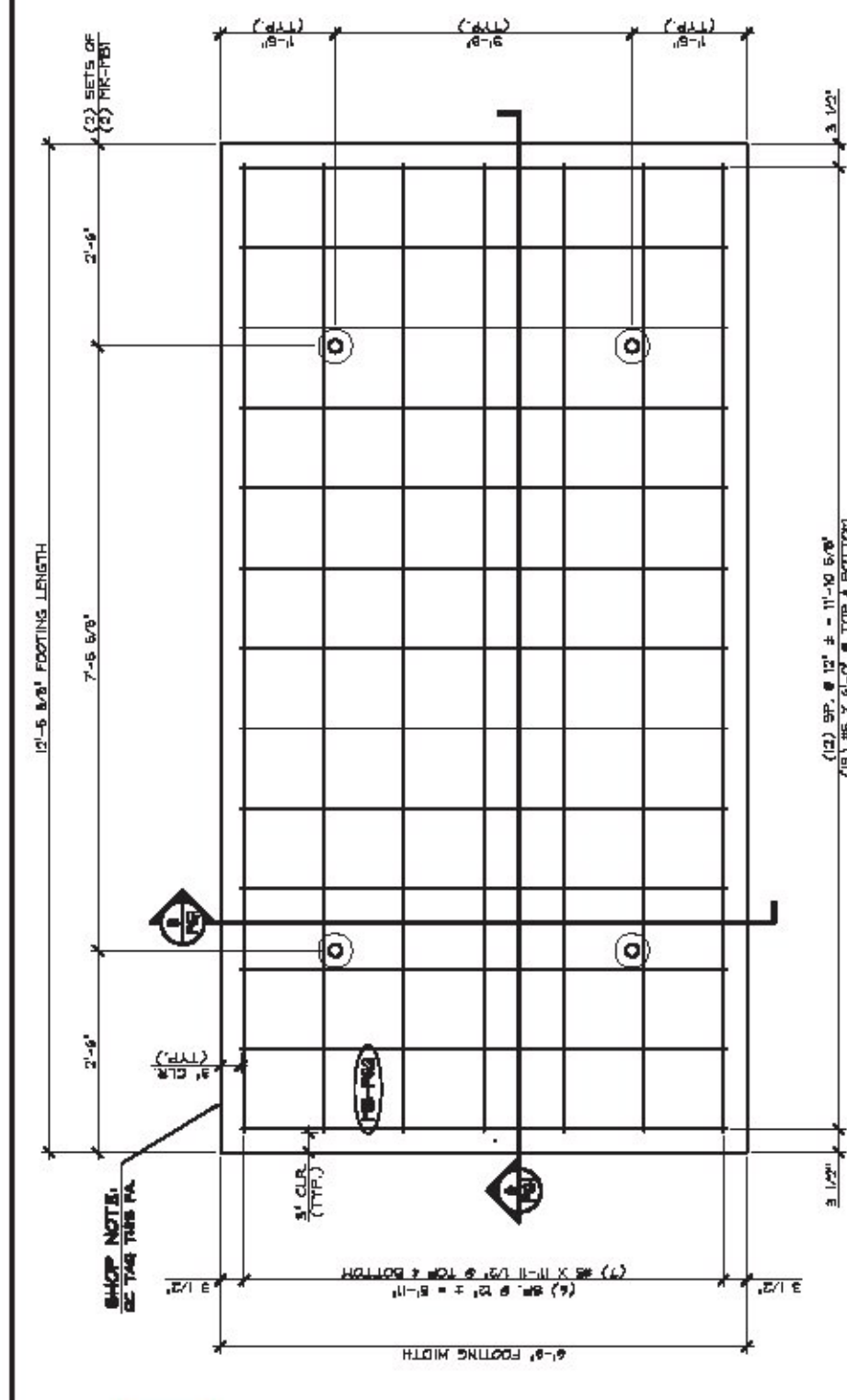
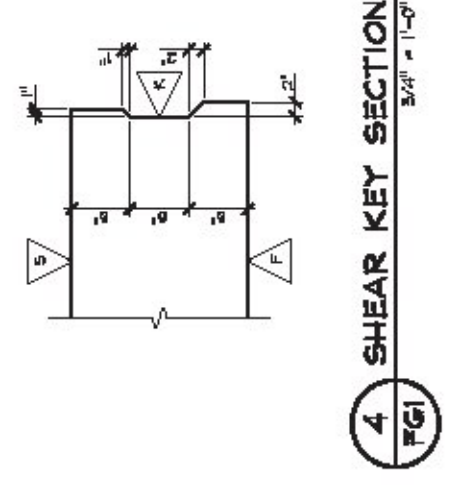
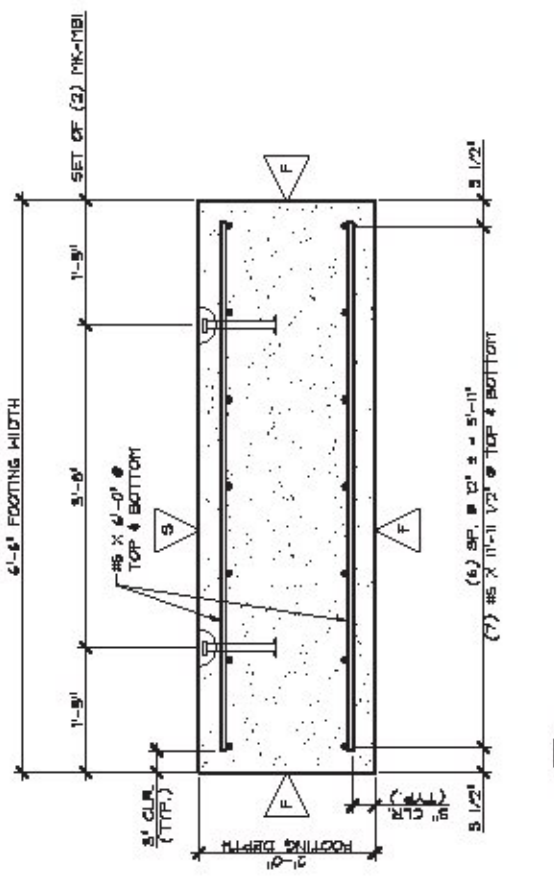
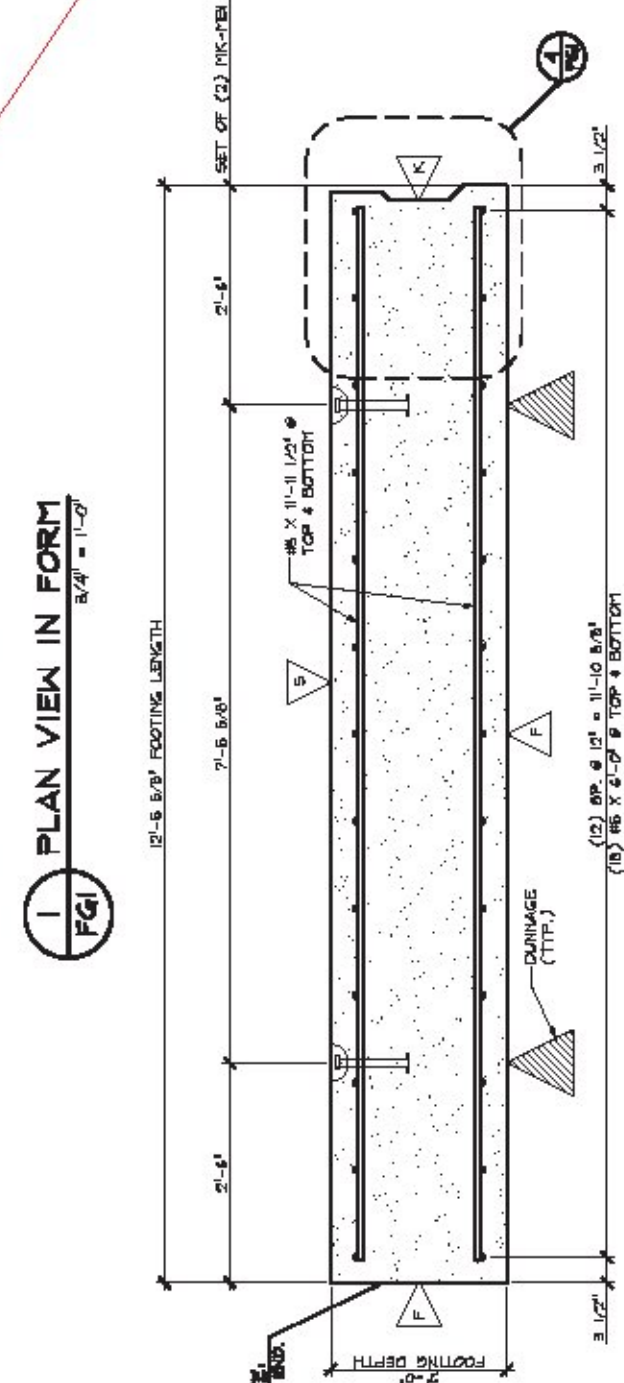
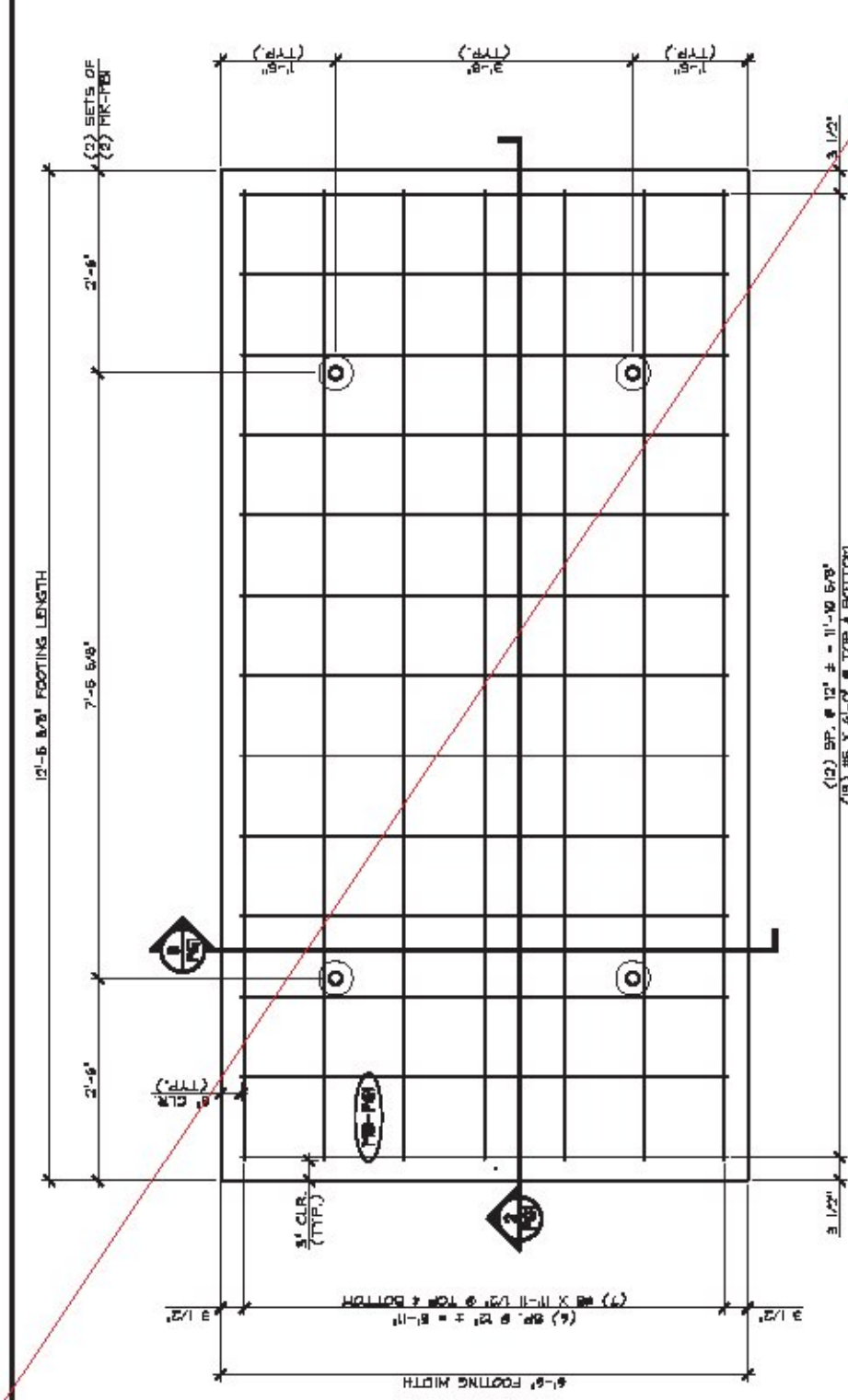


This sheet of the
 submittal has not been
 reviewed.



ITEM MARK DESCRIPTION QTY./SLAB

1	12 #4 BARS	12
2	12 #4 BARS	12
3	12 #4 BARS	12
4	12 #4 BARS	12
5	12 #4 BARS	12
6	12 #4 BARS	12
7	12 #4 BARS	12
8	12 #4 BARS	12
9	12 #4 BARS	12
10	12 #4 BARS	12
11	12 #4 BARS	12
12	12 #4 BARS	12

MARK: MB-FG1 QTY: 2 WT: 12.16 T VOL: 6.00 CY
 MARK: MB-FG2 QTY: 1 WT: 12.16 T VOL: 6.00 CY

- SEE NOTE: 1. ALL REINFORCING BARS SHALL BE EPOXY COATED UNLESS OTHERWISE SPECIFIED.
- 2. ALL REINFORCING BARS SHALL BE WELDED TOGETHER AT JOINTS UNLESS OTHERWISE SPECIFIED.
- 3. ALL REINFORCING BARS SHALL BE WELDED TOGETHER AT JOINTS UNLESS OTHERWISE SPECIFIED.
- 4. ALL REINFORCING BARS SHALL BE WELDED TOGETHER AT JOINTS UNLESS OTHERWISE SPECIFIED.
- 5. ALL REINFORCING BARS SHALL BE WELDED TOGETHER AT JOINTS UNLESS OTHERWISE SPECIFIED.
- 6. ALL REINFORCING BARS SHALL BE WELDED TOGETHER AT JOINTS UNLESS OTHERWISE SPECIFIED.
- 7. ALL REINFORCING BARS SHALL BE WELDED TOGETHER AT JOINTS UNLESS OTHERWISE SPECIFIED.
- 8. ALL REINFORCING BARS SHALL BE WELDED TOGETHER AT JOINTS UNLESS OTHERWISE SPECIFIED.
- 9. ALL REINFORCING BARS SHALL BE WELDED TOGETHER AT JOINTS UNLESS OTHERWISE SPECIFIED.
- 10. ALL REINFORCING BARS SHALL BE WELDED TOGETHER AT JOINTS UNLESS OTHERWISE SPECIFIED.
- 11. ALL REINFORCING BARS SHALL BE WELDED TOGETHER AT JOINTS UNLESS OTHERWISE SPECIFIED.
- 12. ALL REINFORCING BARS SHALL BE WELDED TOGETHER AT JOINTS UNLESS OTHERWISE SPECIFIED.

APPROVAL STAMP:

J.P. CARRARA & SONS INC. KURUCKY CONSTRUCTION CORPORATION
 Precast & Prestress Manufacturing
 100 S. 10th Street, Suite 100, Milwaukee, WI 53233

STATE OF VERMONT AGENCY OF TRANSPORTATION
 COUNTY OF ADDISON
 TOWN OF MIDDLEBURY
 MAIN ST., MIDDLEBURY, VT 05750
 PROJECT NO. 2014-07
 SHEET NO. 108 & 9
 DATE: MAY 23, 2017
 DESIGNED BY: [Signature]
 CHECKED BY: [Signature]
 DATE: [Signature]

PRECAST FOOTING DETAILS
 DWG. NO. FG1