

Z-LOK STM CONNECTORS CORRUGATED PIPE DATA

FLATWALL CONNECTORS ARE MARKED (C-F) ROUNDWALL CONNECTORS ARE MARKED (C-R)
CORRUGATED Z-LOK STM CONNECTORS HAVE NOTCHES LOCATED AT 3 & 9 FOR TAKE-DOWN CLAMP ADJUSTMENT.

18" HOPE →

Z-LOK STM PART #	PIPE SIZE	MAX. O.D.	Z-LOK STM MANDREL PART#	Z-LOK STM CLAMP SIZE
ZS-8016-C-F ZS-8016-C-R	12" CPP	15.00"	SM-8016-F SM-8016-R	CL-EV12L
ZS-8019-C-F ZS-8019-C-R	15" CPP	17.75"	SM-8019-F SM-8019-R	CL-EV15-18L
ZS-8022-C-F ZS-8022-C-R	18" CPP	21.47"	SM-8022-F SM-8022-R	CL-EV15-18L
ZS-8029-C-F ZS-8029-C-R	24" CPP	27.80"	SM-8029-F SM-8029-R	CL-EV24L
ZS-8031-C-F ZS-8031-C-R	24" HANCOR ONLY	28.40"	SM-8031-F SM-8031-R	CL-EV24H
ZS-8039-C-F ZS-8039SCR	30" CPP	35.50"	SM-8039-F SM-8039-R	CL-EV30H
ZS-8045-C-F ZS-8045-C-R	36" CPP	41.75"	SM-8045-F SM-8045-R	CL-EV36H

CORRUGATED POLYETHYLENE PIPE (CPP) NEEDS THE EV CLAMP DESIGN.

NOTE: NEED TO INDICATE WHEN ORDERING IF GASKETS ARE FOR ROUND OR FLATWALL

EXAMPLE: ZS-XXXX-C-F = CORRUGATED FOR FLATWALL STRUCTURES
ZS-XXXX-C-R = CORRUGATED FOR ROUND STRUCTURES

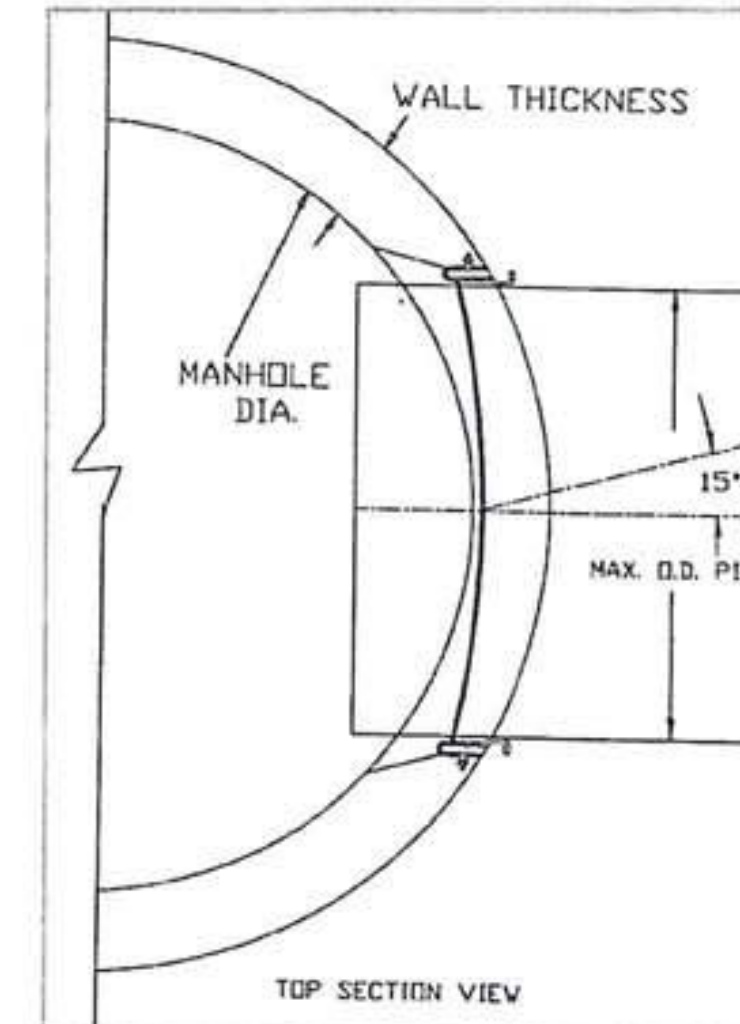
NOTE: ZS-8031 WOULD BE FOR 24" HANCOR PIPE BECAUSE OF THE LARGER VALLEY ON THE PIPE.

COMPONENT IDENTIFICATION FOR Z-LOK STM CONNECTORS

Z-LOK STM PART#	PIPE SIZE	MAX. O.D.	Z-LOK STM MANDREL PART #	Z-LOK STM CLAMP SIZE
ZS-8029-C-F	24" CPP		SM-8029-F	CL-EV24L

Smooth Wall Pipe

MANHOLE DIA.	MAX. O.D. PIPE
48" DIA. 5" WALL	28 IN.
60" DIA. 6" WALL	30 IN.
72" DIA. 7" WALL	37 IN.
84" DIA. 8" WALL	44 IN.
96" DIA. 9" WALL	51 IN.



Corrugated Pipe

MANHOLE DIA.	MAX. O.D. PIPE
48" DIA. 5" WALL	28 IN.
60" DIA. 6" WALL	30 IN.
72" DIA. 7" WALL	37 IN.
84" DIA. 8" WALL	44 IN.
96" DIA. 9" WALL	51 IN.

