

4 INCH DOUBLE YELLOW LINE
 STA. 10+00 - 12+75, BL
 STA. 12+83 - 13+50, BL

4 INCH WHITE LINE
 STA. 10+00 - 11+11, RT (PARKING)
 STA. 10+61 - 11+67, RT
 STA. 11+77 - 12+80, RT (PARKING)
 STA. 12+86 - 13+67, RT (PARKING)
 STA. 10+00 - 10+28, LT (PARKING)
 STA. 10+28 - 11+67, LT
 STA. 11+74 - 12+72, LT (PARKING)
 STA. 12+77 - 13+08, LT (PARKING)

12 INCH WHITE LINE
 STA. 12+75 - 12+83 (CROSSWALK)

TEMPORARY BRIDGE
 STA. 11+07 - 11+67

CHANGING ELEVATIONS OF SEWER MANHOLES
 STA. 11+26, LT

BITUMINOUS CONCRETE SIDEWALK
 STA. 11+11 - 11+35, LT
 STA. 11+77 - 11+90, LT

TEMPORARY PEDESTRIAN BRIDGE
 STA. 11+36 - 11+76, LT

**CHANGING ELEVATION OF DROP INLETS,
 CATCH BASINS OR MANHOLES**

STA. 10+08, RT
 STA. 11+98, LT
 STA. 12+04, RT

TEMPORARY TRAFFIC BARRIER
 STA. 10+83 - 11+06, RT
 STA. 11+29 - 11+36, LT
 STA. 11+33 - 11+48, RT
 STA. 11+63 - 11+73, LT

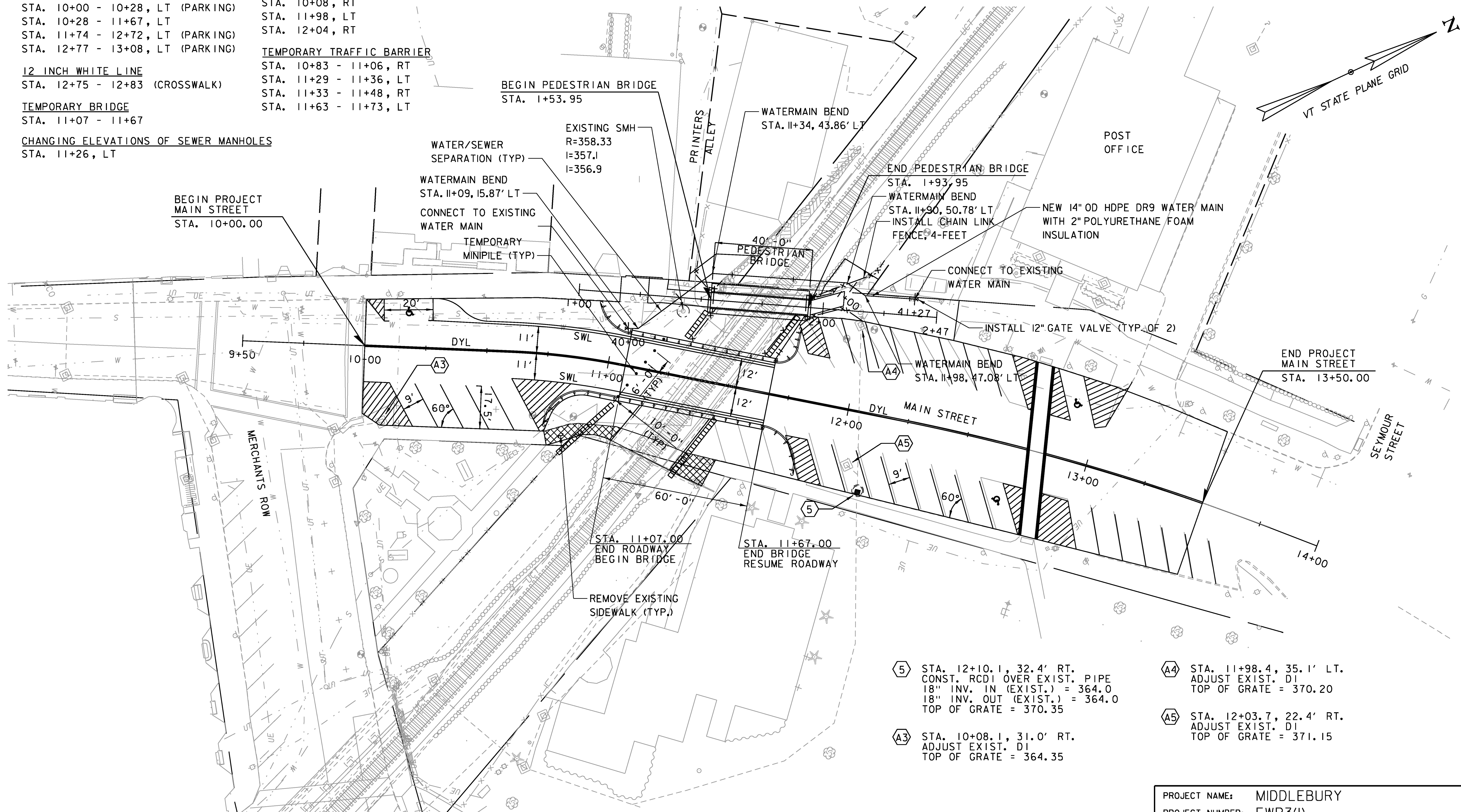
TEMPORARY WATERMAIN
 STA. 11+05 - 12+13, LT
GATE VALVE WITH BOX
 STA. 11+05, LT
 STA. 12+13, LT

CHAIN LINK FENCE, 4 FEET
 STA. 11+28 - 11+35, LT
 STA. 11+77 - 12+03, LT
 STA. 11+77 - 11+99, LT

SOLID ROCK EXCAVATION
 STA. 10+76 - 11+11, RT
 STA. 11+33 - 11+51, RT

LETTER OR SYMBOL
 STA. 10+18, LT (HANDICAP)
 STA. 12+68, RT (HANDICAP)
 STA. 12+90, LT (HANDICAP)

TEMPORARY MINIPILE
 STA. 10+94 - 11+37
 16 PILES, LOCATIONS
 SHOWN APPROXIMATELY
 IN PLAN VIEW



- A5 STA. 12+10.1, 32.4' RT.
CONST. RCDI OVER EXIST. PIPE
18" INV. IN (EXIST.) = 364.0
18" INV. OUT (EXIST.) = 364.0
TOP OF GRATE = 370.35
- A3 STA. 10+08.1, 31.0' RT.
ADJUST EXIST. D1
TOP OF GRATE = 364.35
- A4 STA. 11+98.4, 35.1' LT.
ADJUST EXIST. D1
TOP OF GRATE = 370.20
- A5 STA. 12+03.7, 22.4' RT.
ADJUST EXIST. D1
TOP OF GRATE = 371.15

PROJECT NAME:	MIDDLEBURY
PROJECT NUMBER:	EWP3(I)
FILE NAME:	z17b016_BDR_nul_MAIN.dgn
PROJECT LEADER:	A.P. GUYETTE
DESIGNED BY:	B.M. ROBERTS
MAIN STREET LAYOUT PLAN SHEET	
PLOT DATE:	5/19/2017
DRAWN BY:	B.M. ROBERTS
CHECKED BY:	E.P. DETRICK
SHEET	19 OF 54