

TEMPORARY TRAFFIC BARRIER
 STA. 21+29 - 21+50, LT - 30LF
 STA. 21+42 - 22+14, RT - 80LF
 STA. 21+98 - 22+15, LT - 24LF
 STA. 22+06 - 22+27, RT - 117LF

TEMPORARY BRIDGE
 STA. 21+44 - 22+04

CHANGING ELEVATION OF DROP INLETS, CATCH BASINS, OR MANHOLES
~~STA. 20+35, LT NOT CHANGED~~
 STA. 20+56, LT
 STA. 21+39, RT (TMH)
 STA. 22+04, LT (TMH)

CHANGING ELEVATION OF SEWER MANHOLE
~~STA. 21+03, LT, NOT CHANGED~~

SOLID ROCK EXCAVATION (EX. SIDEWALK REMOVAL)
 STA. 20+80 - 21+40, LT
 STA. 21+86 - 22+04, LT
 STA. 22+23 - 22+55, LT
 STA. 23+53 - 23+56, RT

DETECTABLE WARNING SURFACE
 STA. 21+40, RT.
 STA. 22+50, RT.
 STA. 23+54, RT.
 STA. 23+69, RT.

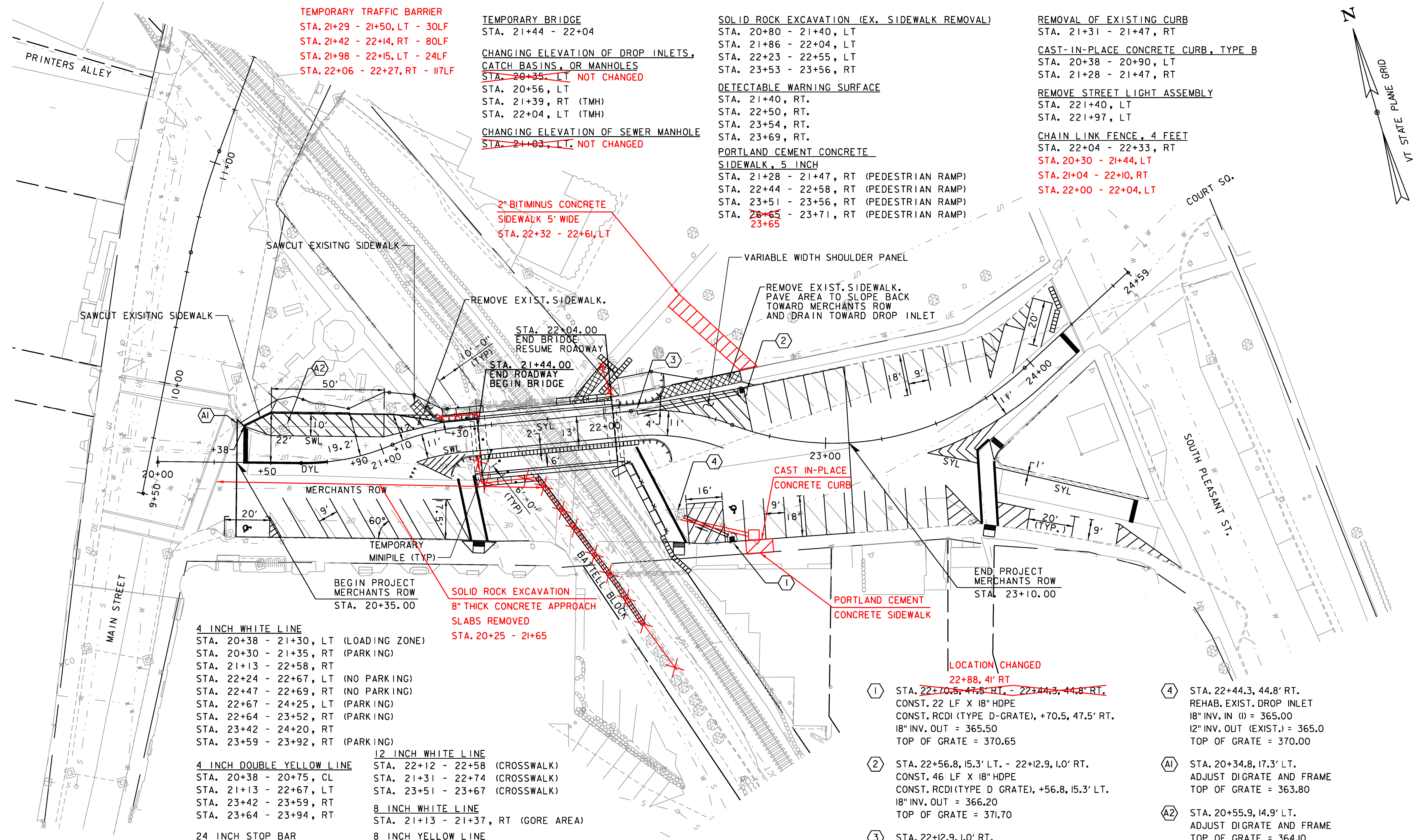
PORTLAND CEMENT CONCRETE SIDEWALK, 5 INCH
 STA. 21+28 - 21+47, RT (PEDESTRIAN RAMP)
 STA. 22+44 - 22+58, RT (PEDESTRIAN RAMP)
 STA. 23+51 - 23+56, RT (PEDESTRIAN RAMP)
~~STA. 23+65 - 23+71, RT (PEDESTRIAN RAMP)~~
 23+65

REMOVAL OF EXISTING CURB
 STA. 21+31 - 21+47, RT

CAST-IN-PLACE CONCRETE CURB, TYPE B
 STA. 20+38 - 20+90, LT
 STA. 21+28 - 21+47, RT

REMOVE STREET LIGHT ASSEMBLY
 STA. 221+40, LT
 STA. 221+97, LT

CHAIN LINK FENCE, 4 FEET
 STA. 22+04 - 22+33, RT
 STA. 20+30 - 21+44, LT
 STA. 21+04 - 22+10, RT
 STA. 22+00 - 22+04, LT



4 INCH WHITE LINE
 STA. 20+38 - 21+30, LT (LOADING ZONE)
 STA. 20+30 - 21+35, RT (PARKING)
 STA. 21+13 - 22+58, RT
 STA. 22+24 - 22+67, LT (NO PARKING)
 STA. 22+47 - 22+69, RT (NO PARKING)
 STA. 22+67 - 24+25, LT (PARKING)
 STA. 22+64 - 23+52, RT (PARKING)
 STA. 23+42 - 24+20, RT
 STA. 23+59 - 23+92, RT (PARKING)

4 INCH DOUBLE YELLOW LINE
 STA. 20+38 - 20+75, CL
 STA. 21+13 - 22+67, LT
 STA. 23+42 - 23+59, RT
 STA. 23+64 - 23+94, RT

24 INCH STOP BAR
 STA. 20+38
 STA. 21+71, LT & RT
 STA. 24+17
 STA. 23+89

12 INCH WHITE LINE
 STA. 22+12 - 22+58 (CROSSWALK)
 STA. 21+31 - 22+74 (CROSSWALK)
 STA. 23+51 - 23+67 (CROSSWALK)

8 INCH WHITE LINE
 STA. 21+13 - 21+37, RT (GORE AREA)

8 INCH YELLOW LINE
 STA. 23+42 - 23+75, RT (GORE AREA)

LETTER OR SYMBOL
 STA. 21+06 - 21+11, RT (YIELD MARKINGS)
 STA. 20+39, RT (HANDICAP)
 STA. 22+68, RT (HANDICAP)

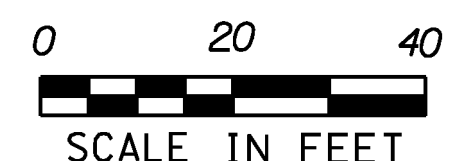
SOLID ROCK EXCAVATION
8\"/>

PORTLAND CEMENT CONCRETE SIDEWALK

CAST IN-PLACE CONCRETE CURB

2\"/>

TEMPORARY MINIPILE
 STA. 21+31 - 21+71, LT & RT
 14 PILES, LOCATIONS SHOWN APPROXIMATELY IN PLAN VIEW



- LOCATION CHANGED**
~~22+88, 41' RT~~
~~STA. 22+70.5, 47.5' RT. - 22+44.3, 44.8' RT.~~
- ① STA. 22+70.5, 47.5' RT. - 22+44.3, 44.8' RT.
 CONST. 22 LF X 18" HDPE
 CONST. RCDI (TYPE D-GRATE), +70.5, 47.5' RT.
 18" INV. OUT = 365.50
 TOP OF GRATE = 370.65
 - ② STA. 22+56.8, 15.3' LT. - 22+12.9, 1.0' RT.
 CONST. 46 LF X 18" HDPE
 CONST. RCDI (TYPE D GRATE), +56.8, 15.3' LT.
 18" INV. OUT = 366.20
 TOP OF GRATE = 371.70
 - ③ STA. 22+12.9, 1.0' RT.
 REHAB. EXIST. DROP INLET
 18" INV. IN (2) = 365.50
 12" INV. OUT (EXIST.) = 365.4
 TOP OF GRATE = 372.75

- ④ STA. 22+44.3, 44.8' RT.
 REHAB. EXIST. DROP INLET
 18" INV. IN (1) = 365.00
 12" INV. OUT (EXIST.) = 365.0
 TOP OF GRATE = 370.00
- ①A STA. 20+34.8, 17.3' LT.
 ADJUST DIGRATE AND FRAME
 TOP OF GRATE = 363.80
- ①A2 STA. 20+55.9, 14.9' LT.
 ADJUST DIGRATE AND FRAME
 TOP OF GRATE = 364.10

PROJECT NAME:	MIDDLEBURY	PLOT DATE:	5/19/2017
PROJECT NUMBER:	EWP3(1)	DRAWN BY:	D.M. PECK
FILE NAME:	z17b016_BDR_nul.dgn	CHECKED BY:	E.P. DETRICK
DESIGNED BY:	D.M. PECK	MERCHANTS ROW LAYOUT PLAN SHEET	SHEET 20 OF 54