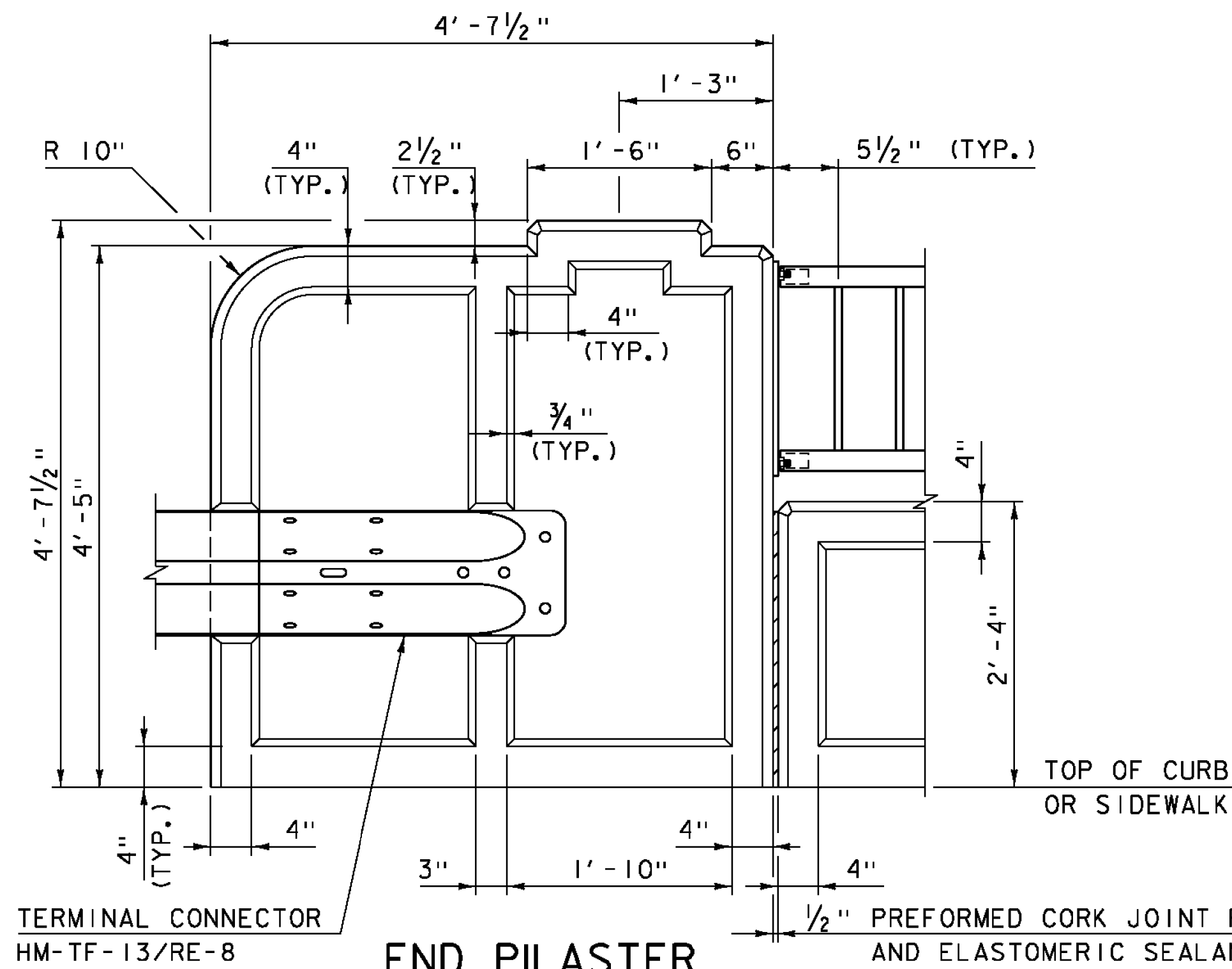
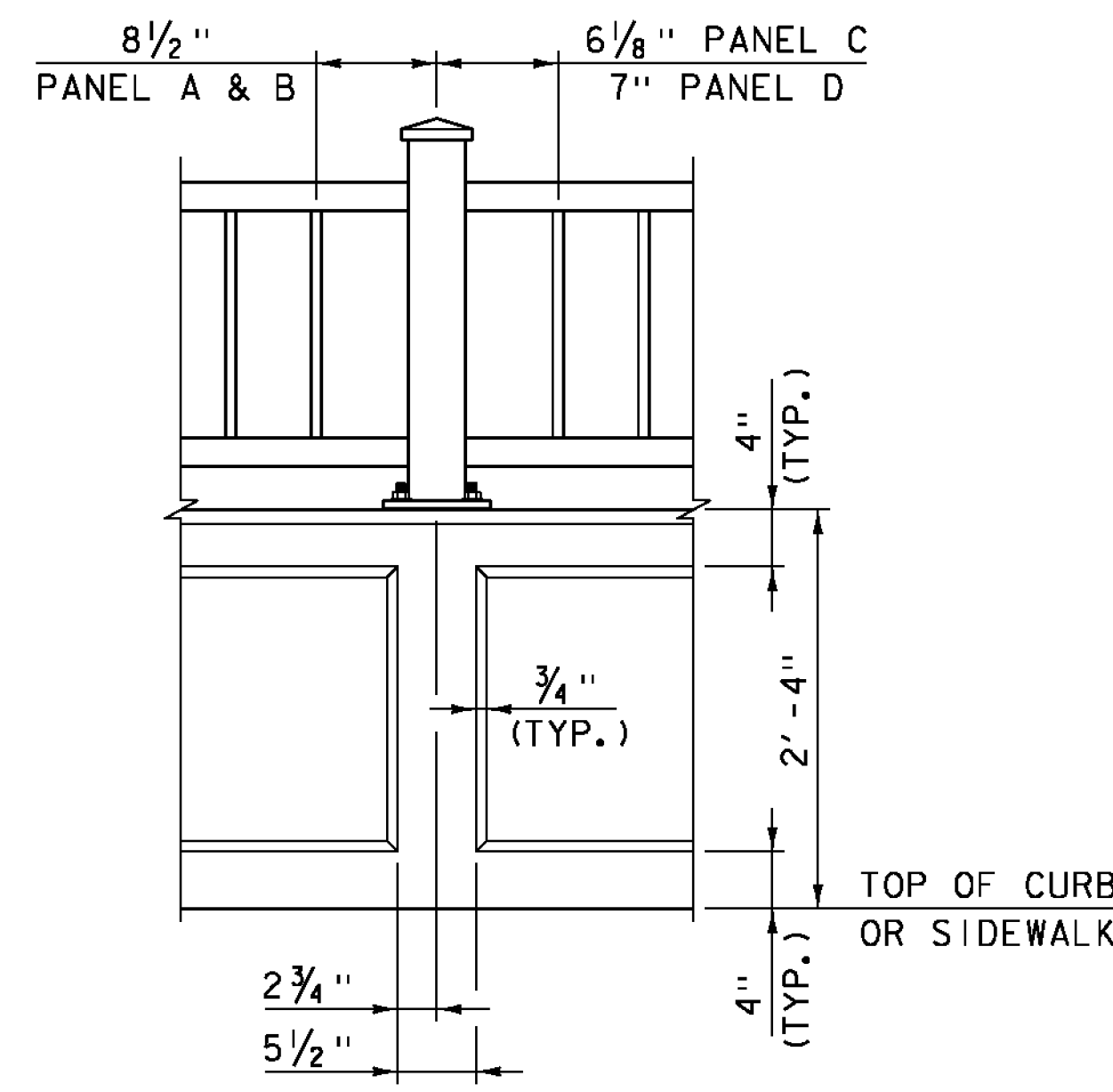


**BRIDGE RAIL ELEVATION (INTERIOR FACE)**

SCALE: 1/2" = 1'-0"



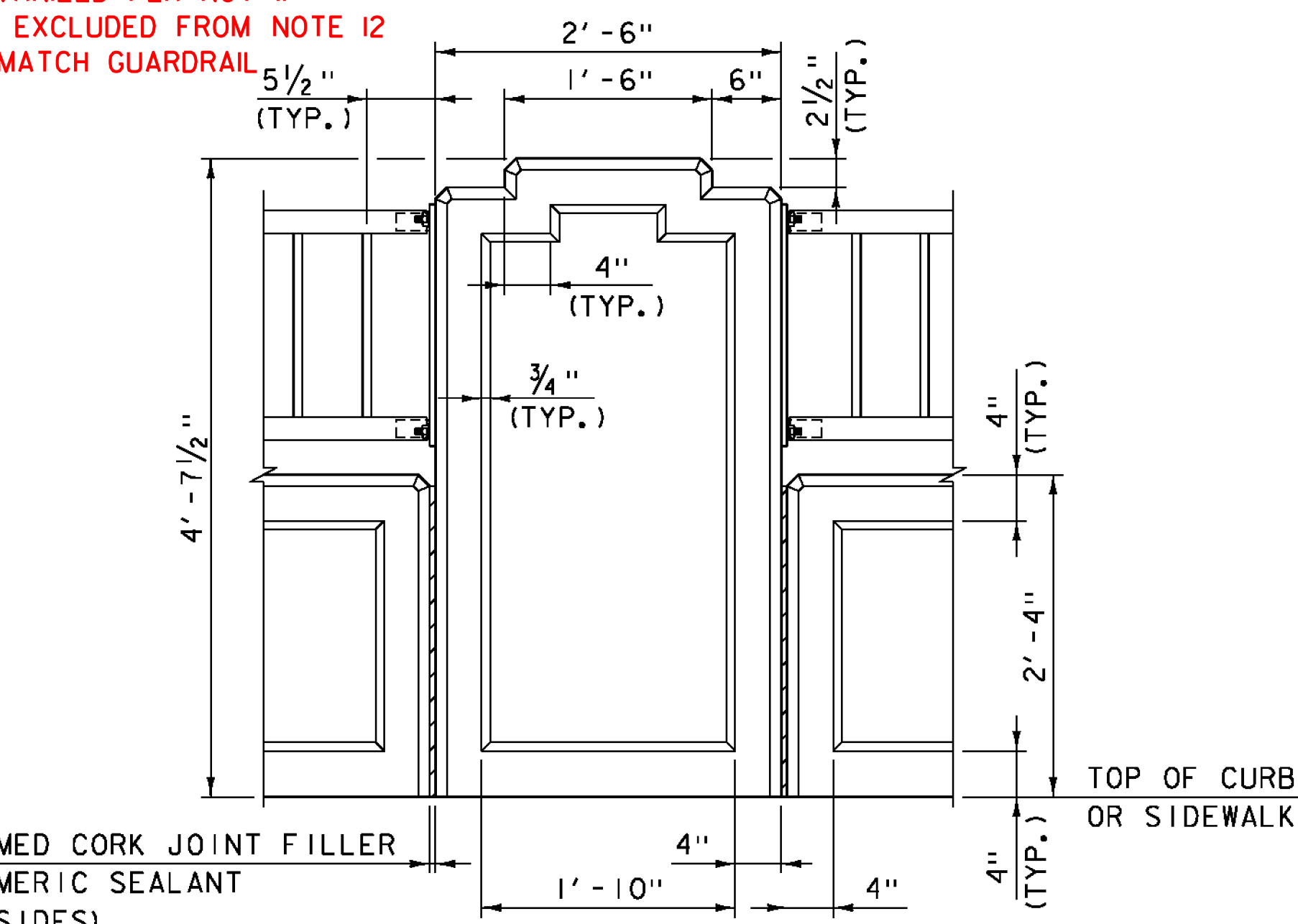
**END PILASTER**



**POST**

**BRIDGE RAIL CONCRETE DETAILS**

SCALE: 1" = 1'-0"



**INTERMEDIATE PILASTER**

**BRIDGE RAIL NOTES**

1. ALL DIMENSIONS TO FACE OF CONCRETE UNLESS NOTED OTHERWISE.
2. RAIL POSTS WILL BE SET NORMAL TO GRADE.
3. BRIDGE RAIL WILL BE PAID FOR UNDER ITEM 900.640, "SPECIAL PROVISION (BRIDGE RAILING, GALVANIZED METAL HAND RAILING/CONCRETE PARAPET COMBINATION)".
4. REINFORCING STEEL IN THE BRIDGE RAILING SHALL BE LEVEL 1 - EPOXY COATED, MEET THE REQUIREMENTS OF SECTION 507, AND WILL BE PAID FOR UNDER ITEM 900.640, "SPECIAL PROVISION (BRIDGE RAILING, GALVANIZED METAL HAND RAILING/CONCRETE PARAPET COMBINATION)". REINFORCING STEEL EXTENDING FROM THE CONCRETE BRIDGE DECK INTO THE BRIDGE RAILING SHALL BE PAID FOR UNDER ITEM 507.11, "REINFORCING STEEL, EPOXY COATED". SEE PROJECT NOTE 28 ON SHEET 3.
5. METAL HAND RAILING, TO INCLUDE STEEL PIPES, PLATES AND HARDWARE, WILL BE PAID FOR UNDER ITEM 900.640, "SPECIAL PROVISION (BRIDGE RAILING, GALVANIZED METAL HAND RAILING/CONCRETE PARAPET COMBINATION)".
6. STEEL PIPES FOR POSTS, TOP AND BOTTOM RAIL, AND PALINGS SHALL BE SEAMLESS, CONFORMING TO SUBSECTION 732.01.
7. STEEL FOR BASE AND ANCHORAGE PLATES SHALL CONFORM TO SUBSECTION 732.03 (b).
8. HARDWARE FOR ANCHOR BOLT ASSEMBLIES SHALL CONFORM TO SUBSECTION 732.03 (d).
9. 1/8" PAD SHALL CONFORM TO SUBSECTION 731.01 OR 731.02.
10. ALL EXPOSED CUT OR SHEARED EDGES OF STEEL COMPONENTS SHALL BE ROUNDED TO A 1/16" RADIUS AND BE FREE OF BURRS.
11. ALL PARTS SHALL BE GALVANIZED AFTER FABRICATION IN ACCORDANCE WITH AASHTO M 111/M 111, EXCEPT HARDWARE, WHICH SHALL MEET THE REQUIREMENTS OF AASHTO M 232/M 232.
12. ALL PARTS EXCEPT HARDWARE AND ANCHORAGE PLATES SHALL BE PAINTED BLACK (COLOR CHIP #27038).
13. RAIL POST ANCHORING NUTS SHALL BE TIGHTENED TO A SNUG FIT AND GIVEN AN ADDITIONAL ONE-EIGHTH TURN.
14. THE FABRICATOR SHALL SUBMIT FABRICATION DRAWINGS INCLUDING WELDING PROCEDURES FOR METAL HAND RAILING IN ACCORDANCE WITH SECTION 105.

TERMINAL CONNECTOR  
HM-TF-13/RE-8  
FIELD CHANGED TO BE  
GALVANIZED PER NOTE 11  
BUT EXCLUDED FROM NOTE 12  
TO MATCH GUARDRAIL

1/2" PREFORMED CORK JOINT FILLER  
AND ELASTOMERIC SEALANT  
(TYP BOTH SIDES)

PROJECT NAME: BRATTLEBORO  
PROJECT NUMBER: BF 2000(26)

FILE NAME: z15j091rall\_bdr-31.dgn  
PROJECT LEADER: J. BYATT  
DESIGNED BY: M. SMITH  
BRIDGE RAIL DETAILS SHEET 2

PLOT DATE: 2/5/2016  
DRAWN BY: M. SMITH  
CHECKED BY: N. CARON  
SHEET 20 OF 26

