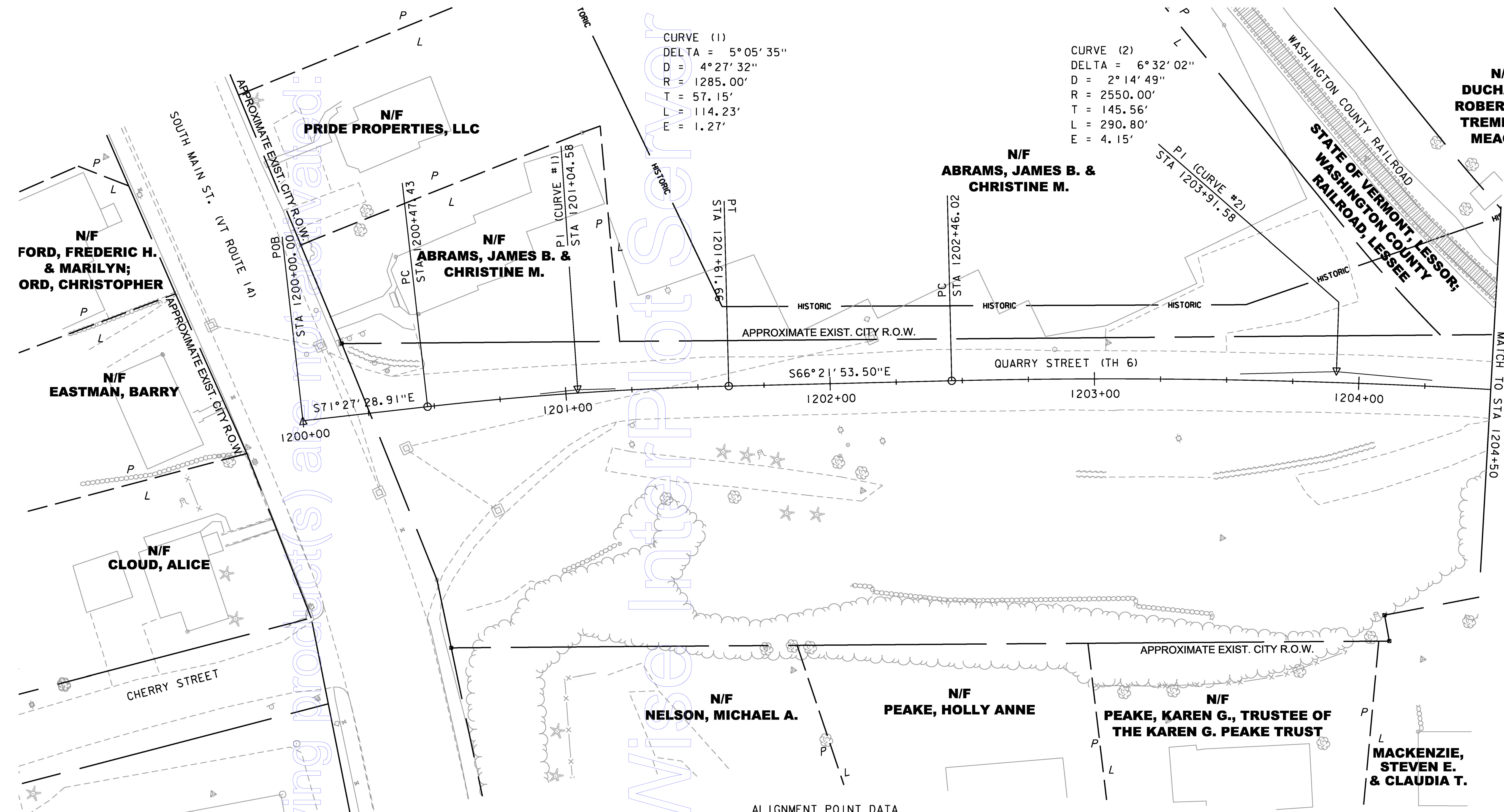


CURVE (1)
 DELTA = 5°05'35"
 D = 4°27'32"
 R = 1285.00'
 T = 57.15'
 L = 114.23'
 E = 1.27'

CURVE (2)
 DELTA = 6°32'02"
 D = 2°14'49"
 R = 2550.00'
 T = 145.56'
 L = 290.80'
 E = 4.15'



ALIGNMENT POINT DATA

POINT TYPE	STATION	NORTHING	EASTING
POB	1200+00.00	614143.5405	1640761.0146
PC	1200+47.43	614128.4574	1640805.9837
PI	1201+04.58	614110.2834	1640860.1682
PT	1201+61.66	614087.3709	1640912.5253
PC	1202+46.02	614053.5489	1640989.8116
PI	1203+91.58	613995.1928	1641123.1605
PT	1205+36.82	613922.0415	1641249.0027
PC	1207+44.44	613817.7037	1641428.4952
PI	1208+20.78	613779.3388	1641494.4944
PCC	1208+96.97	613734.0251	1641555.9308
PI	1209+44.63	613705.7336	1641594.2883
PT	1209+92.14	613672.5038	1641628.4570
POE	1210+00.00	613667.0271	1641634.0884

DATUM
 VERTICAL: NAVD 1929
 HORIZONTAL: NAD 1983



PROJECT NAME:	BARRE CITY - BARRE TOWN	PLOT DATE:	12/2/2016
PROJECT NUMBER:	MEGC M 6000(II)C/1	DRAWN BY:	P.A. MILLER
FILE NAME:	z15d040bdr_all.dgn	CHECKED BY:	D.M. PECK
DESIGNED BY:	D.M. PECK	ALIGNMENT LAYOUT SHEET (1 OF 2)	SHEET 13 OF 39