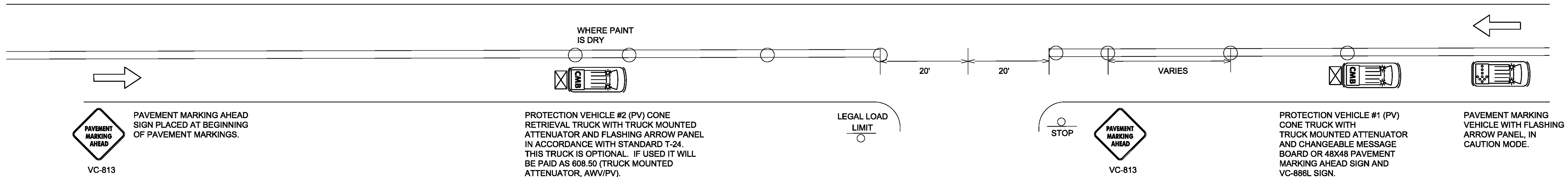
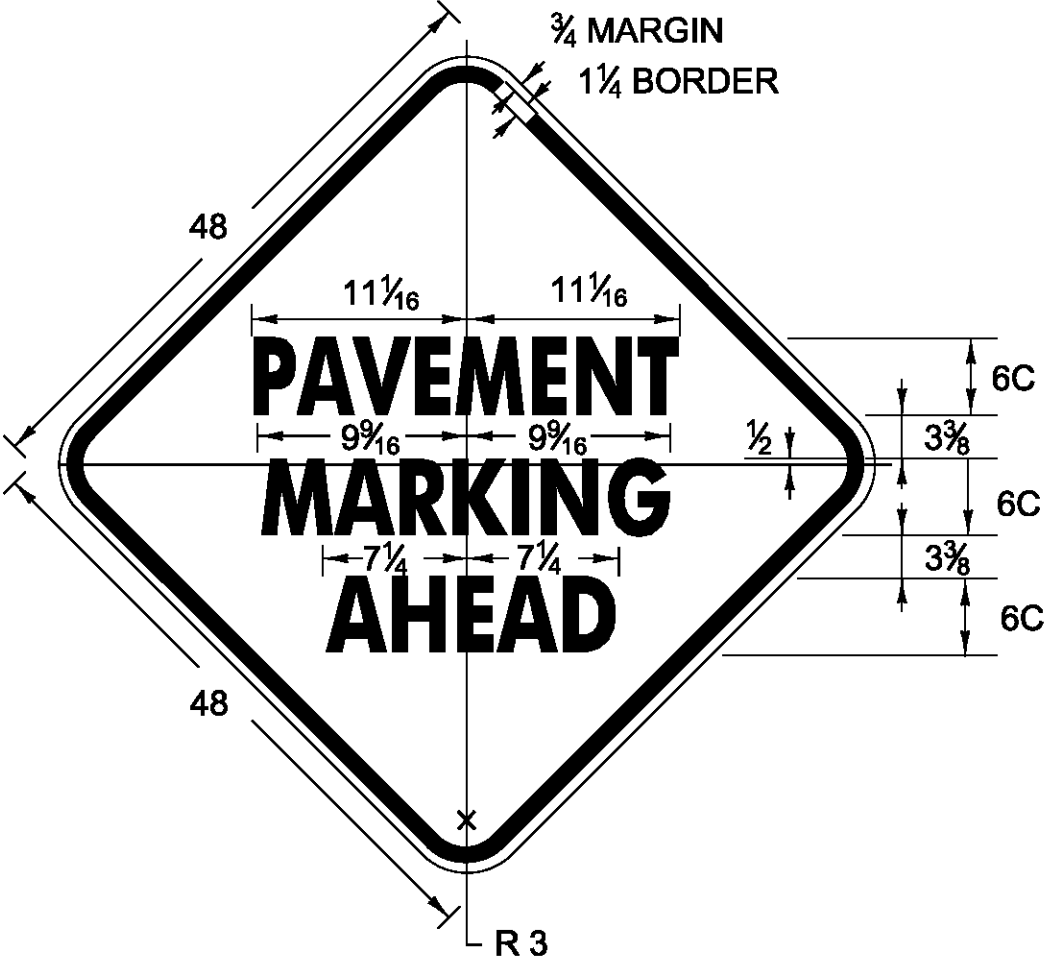


TRAFFIC CONTROL PLAN

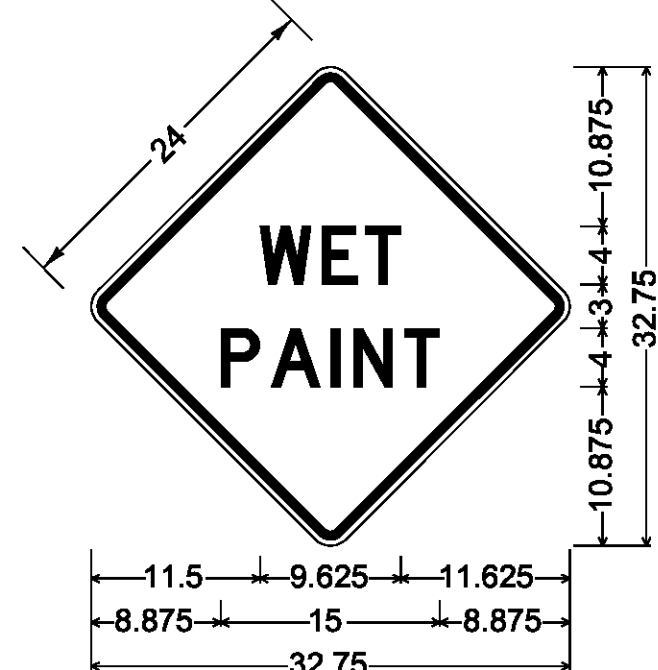


NOTES

1. ALL WORK VEHICLES USED SHALL DISPLAY HIGH-INTENSITY ROTATING, FLASHING, OSCILLATING OR STROBE LIGHTS.
2. ALL PROTECTION VEHICLES SHALL BE EQUIPPED WITH A TRUCK MOUNTED ATTENUATOR WITH A VC-866(L/R) SIGN ATTACHED AND A FLASHING ARROW PANEL IN ACCORDANCE WITH STANDARD T-24. PAYMENT WILL BE MADE UNDER ITEM 608.50 (TRUCK MOUNTED ATTENUATOR, AWW/PV).
3. FLASHING ARROW PANELS MOUNTED TO VEHICLES WILL NOT BE PAID FOR DIRECTLY, BUT WILL BE CONSIDERED INCIDENTAL TO ITEM 641.10 (TRAFFIC CONTROL). FLASHING ARROW PANELS SHALL BE USED IN CAUTION MODE WHEN VEHICLE IS IN TRAVEL LANE.
4. PROTECTION VEHICLE #1 SHALL TRAVEL AT A VARYING DISTANCE FROM PAVEMENT MARKING VEHICLE WHILE SETTING CONES ON THE WET PAINT TO ENSURE ADEQUATE SIGHT DISTANCE FOR TRAFFIC APPROACHING FROM THE REAR.
5. UNIFORMED TRAFFIC OFFICER (UTO) REQUIRED FOR NIGHT WORK, AND AT OTHER TIMES AS DIRECTED BY THE ENGINEER.
6. THE NUMBER OF CHANNELIZING DEVICES AND OTHER TRAFFIC CONTROL DEVICES SHOWN ON THIS SHEET ARE FOR ILLUSTRATIVE PURPOSES ONLY. THE ACTUAL NUMBER REQUIRED IS TO BE DETERMINED BASED ON FIELD CONDITIONS.
7. CONE VEHICLES SHALL HAVE PROTECTIVE CAGES TO PROTECT THE PERSON PLACING AND RETRIEVING CONES.
8. PAVEMENT MARKING AHEAD SIGNS SHALL BE PLACED AT THE BEGINNING OF PAVEMENT MARKING OPERATION AND AT A MINIMUM OF EVERY 3 MILES. THEY SHALL ALSO BE PLACED AFTER EVERY NUMBERED STATE HIGHWAY OR INTERSECTIONS INCLUDING COMMERCIAL DRIVES.
9. WORK VEHICLES SHALL PULL OVER TO ALLOW VEHICLES TO PASS AT REASONABLE INTERVALS TO AVOID EXCESSIVE QUEUING AND DELAYS.
10. CONE PICK-UP MAY BE ACCOMPLISHED USING DEDICATED VEHICLE (PV#2) OR BY PROTECTION VEHICLE #1 WHEN PAINT TRUCK IS NOT OPERATING AND PAINT IS DRY. QUANTITY OF 608.50 (TRUCK MOUNTED ATTENUATOR, AWW/PV) SHALL BE MEASURED AS THE NUMBER OF VEHICLE HOURS USED.
11. CONES SHALL BE LEFT IN PLACE UNTIL PAINT IS DRY AND NOT TRACKING.
12. CONE SPACING SHALL BE ADEQUATE SO THAT DRIVERS CAN ALWAYS SEE ONE CONE.



VC-813



VC-885

LEGEND

- INDICATES TRAFFIC FLOW
- FLASHING ARROW PANEL
- TRUCK MOUNTED ATTENUATOR
- CHANGEABLE MESSAGE BOARD
- 28" RETROREFLECTORIZED CONE
- MARKING OPERATIONS VEHICLE

NOT TO SCALE

PROJECT NAME:	STATEWIDE
PROJECT NUMBER:	HES MARK(404)
FILE NAME: +14+186.dgn	PLOT DATE: 1/29/2015
PROJECT LEADER: P. COBURN	DRAWN BY: K. SWEET
DESIGNED BY: K. SWEET	CHECKED BY: I. DEGUTIS
TRAFFIC CONTROL SHEET	SHEET 4 OF 56