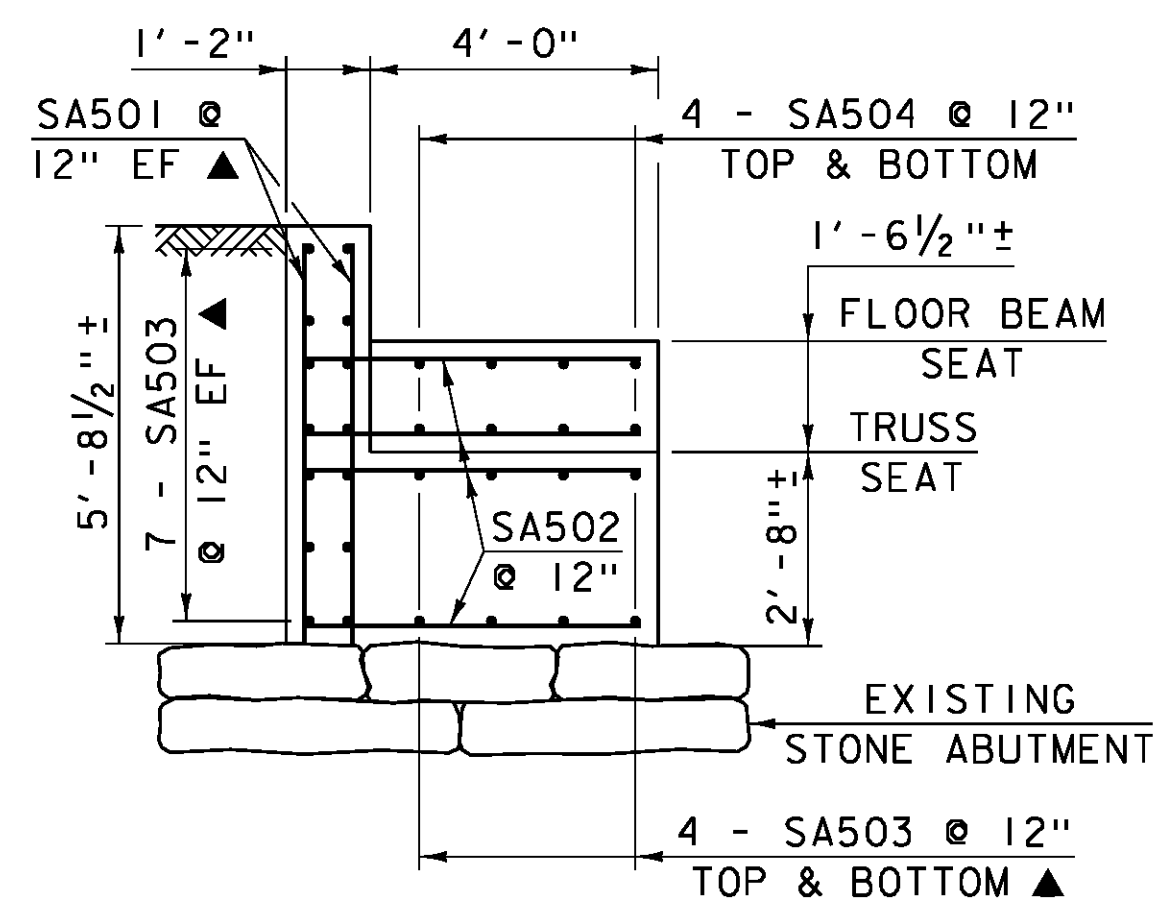


**MASONRY REPAIR DETAIL**

NOT TO SCALE

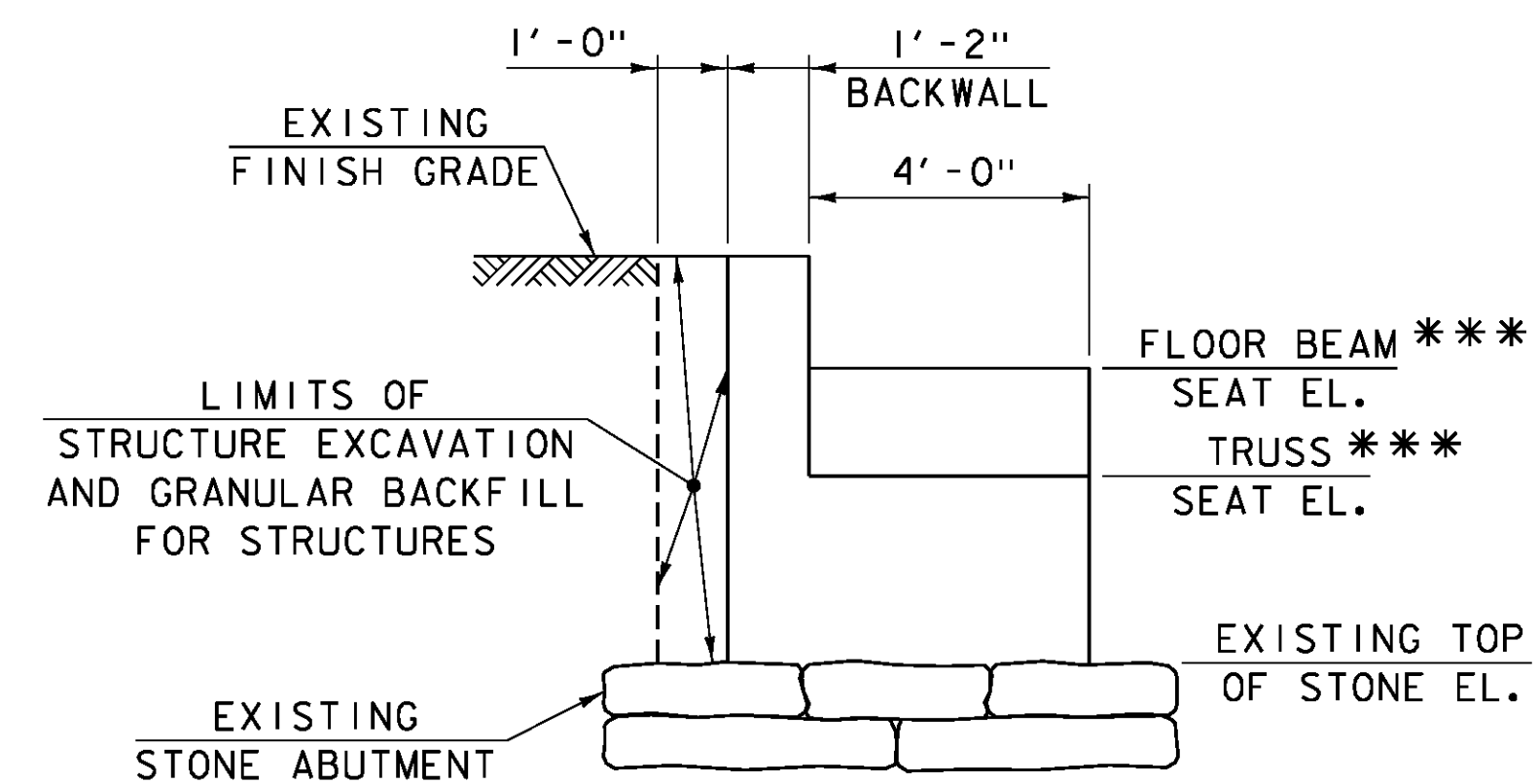
\* USE TAMPING RODS OR OTHER METHODS ACCEPTABLE TO THE ENGINEER.

MASONRY REPAIR WILL BE PAID FOR UNDER ITEM 602.40, REPAIRING STONE MASONRY.



**REINFORCING DETAIL @ SOUTH ABUTMENT**

SCALE: 3/8" = 1'-0"

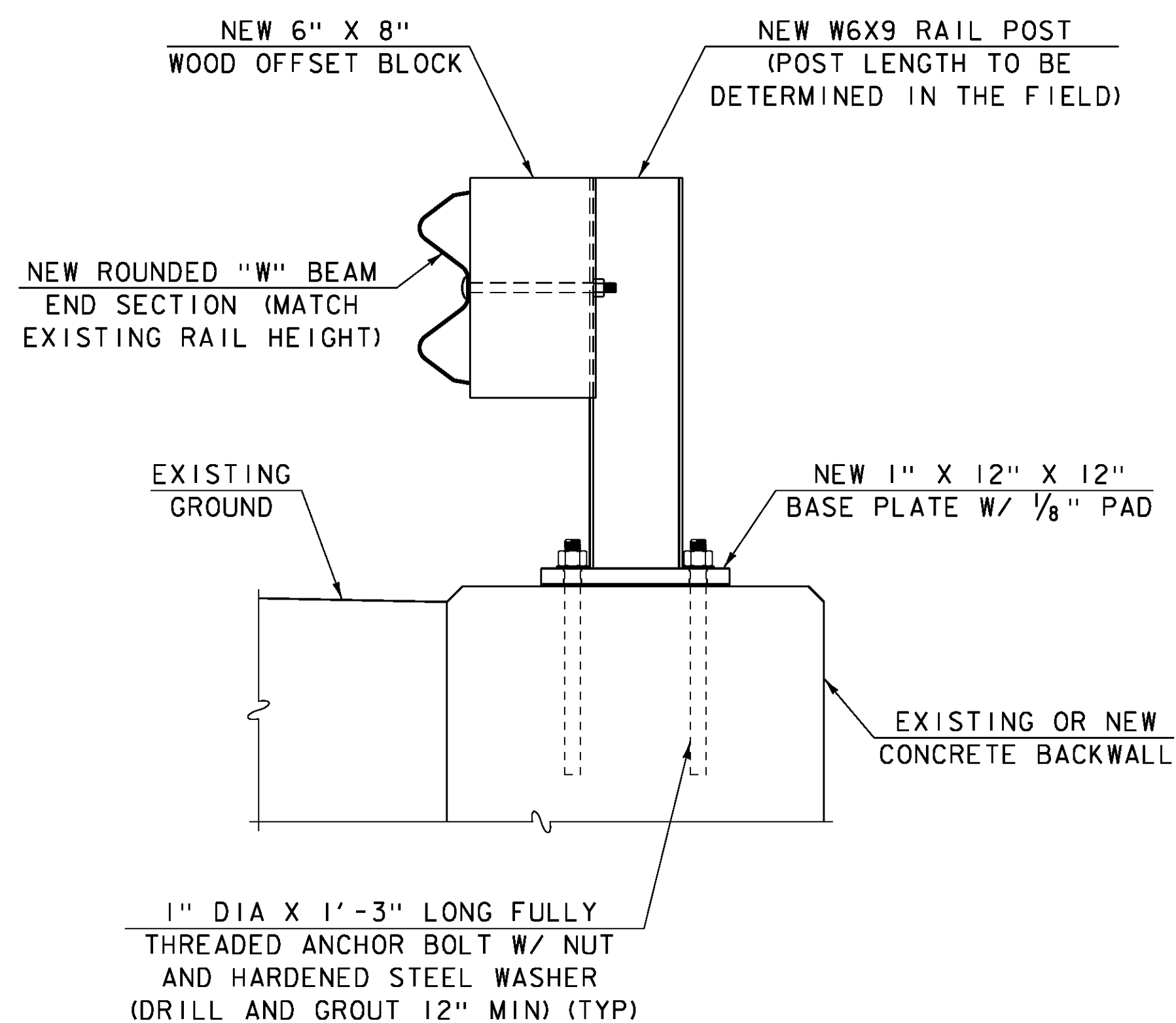


**NEW CONCRETE SEAT @ SOUTH ABUTMENT**

SCALE: 3/8" = 1'-0"

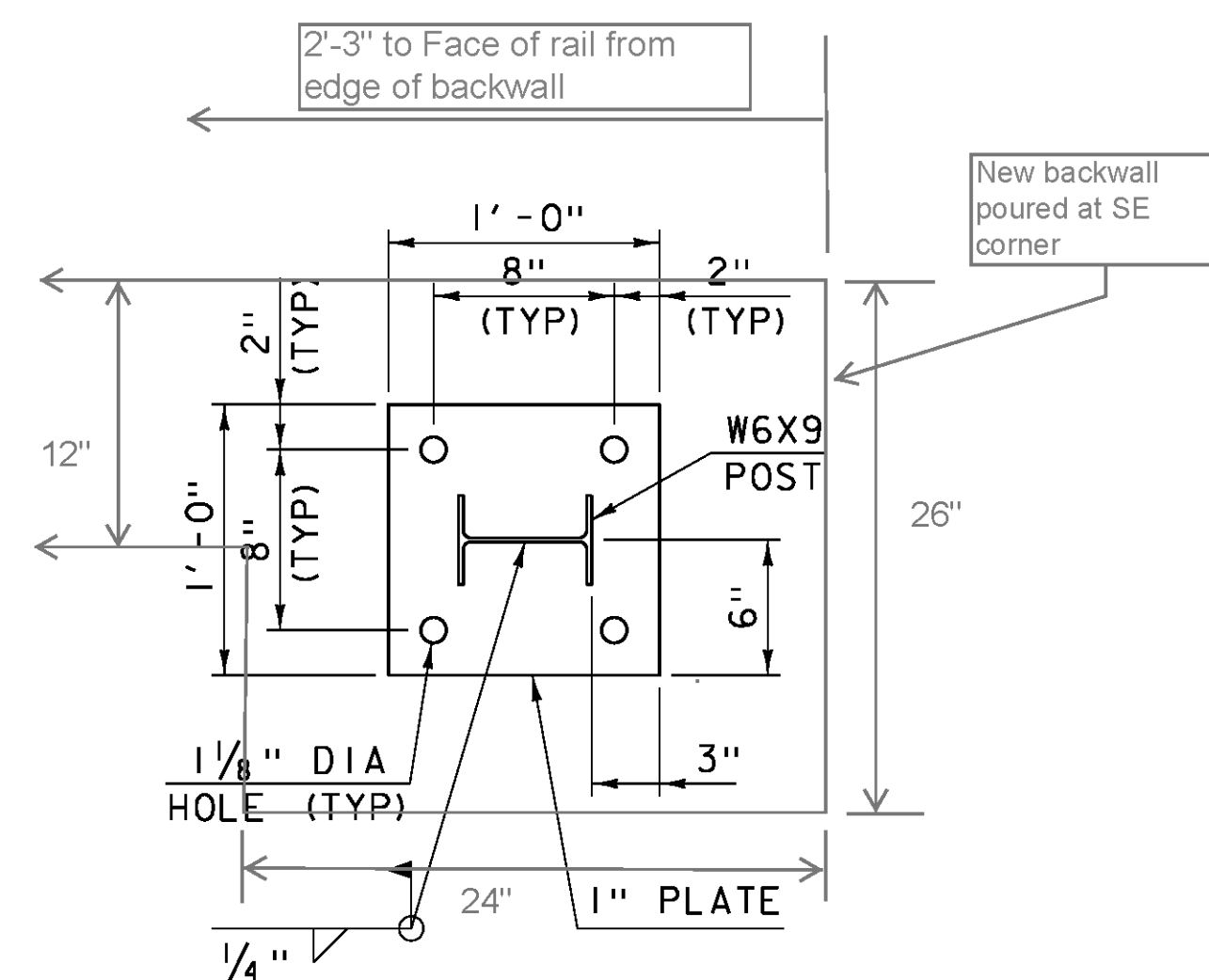
\*\*\* TO BE DETERMINED IN THE FIELD.

NOTE: REMOVE EXISTING CONCRETE BRIDGE SEAT AND BACKWALL ABOVE EXISTING TOP OF STONE ELEVATION. WORK TO BE PAID FOR UNDER PAY ITEM 529.25, "REMOVAL OF CONCRETE OR MASONRY".



**END POST DETAIL**

SCALE: 1/2" = 1'-0"

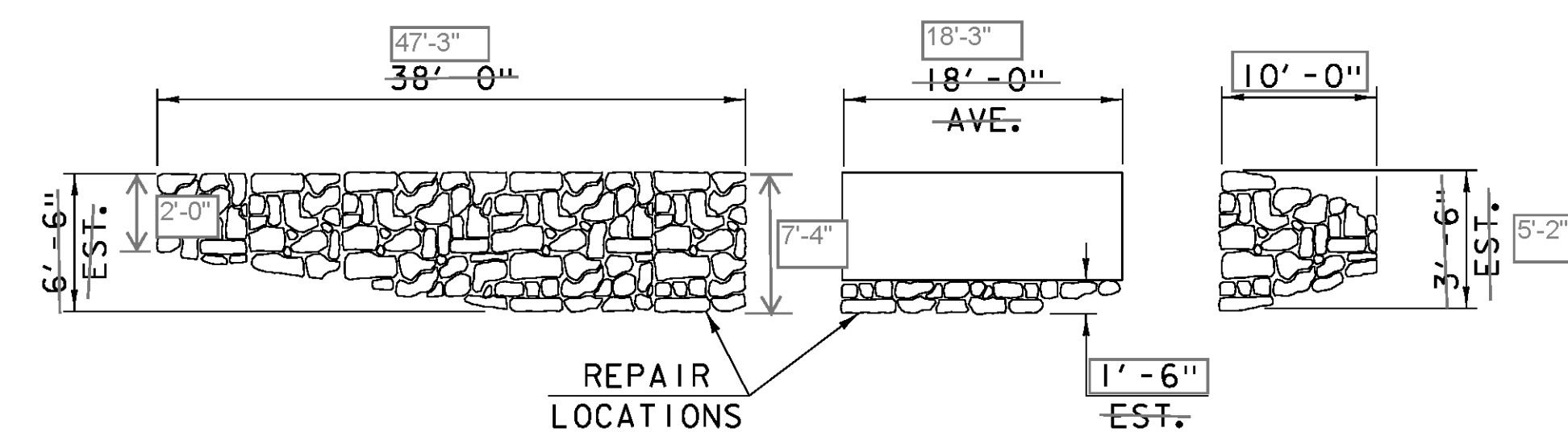


**BASE PLATE DETAIL**

SCALE: 1/2" = 1'-0"

**END POST NOTES:**

1. ANCHOR BOLTS SHALL BE ASTM A 449, 15" LONG, FULLY THREADED. WORK FOR DRILLING AND GROUTING WILL BE PAID FOR UNDER ITEM 507.16, DRILLING AND GROUTING DOWELS.
2. MAINTAIN 1" CLEARANCE BETWEEN END OF NEW ROUNDED "W" BEAM END SECTION AND PORTAL BOARDING.
3. ALL RAIL COMPONENTS, FASTENERS, AND ANCHORS BOLTS SHALL BE GALVANIZED PER SECTION 525 OF THE STANDARD SPECIFICATIONS.



**ABUTMENT NO. 2 REPAIRS (SOUTH ABUTMENT)**

NOT TO SCALE

PROJECT NAME: CHARLOTTE  
PROJECT NUMBER: BO 1445(36)

FILE NAME: sl4j235sub.dgn  
PROJECT LEADER: M. SARGENT  
DESIGNED BY: J. WEAVER  
ABUTMENT AND END POST DETAILS

PLOT DATE: 15-JAN-2016  
DRAWN BY: G. ROY  
CHECKED BY: J. WEAVER  
SHEET 10 OF 13