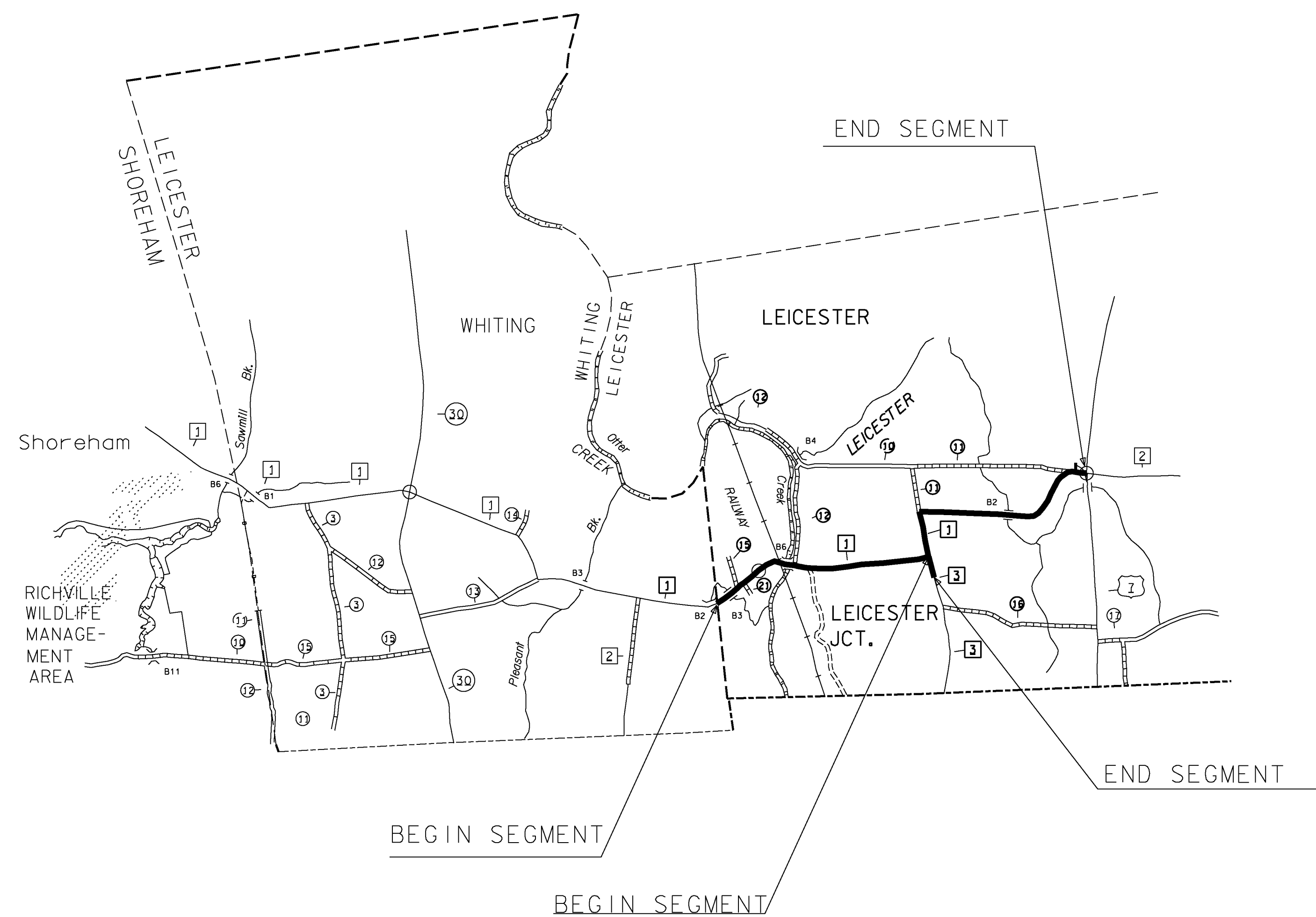


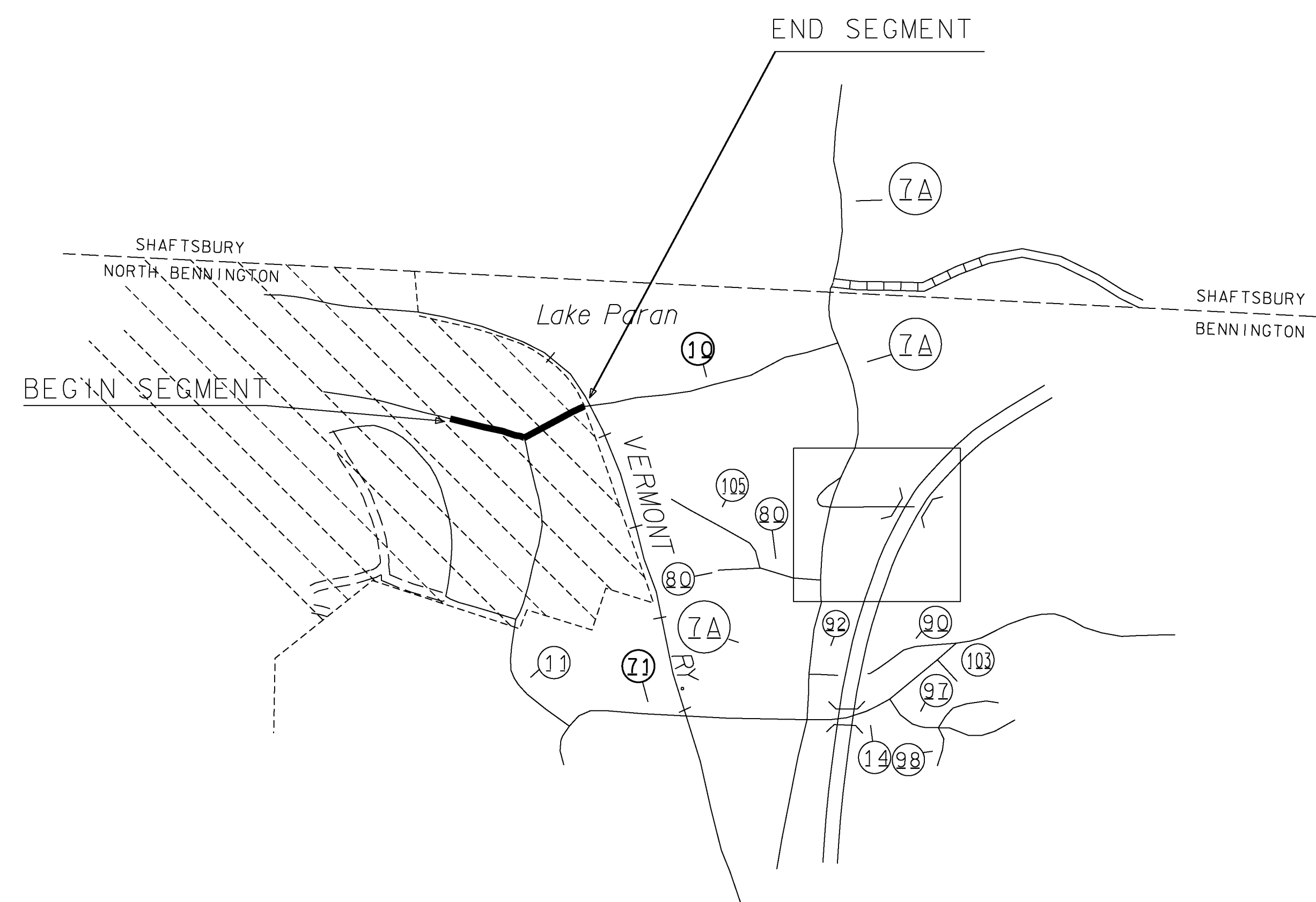
# LEICESTER



BEGINNING AT THE WHITING/LEICESTER TOWN LINE, DESIGNATING THIS AS MILE POINT 0.000 AND EXTENDING EASTERLY ALONG LEICESTER-WHITING ROAD (TH-1) IN THE TOWN OF LEICESTER FOR A DISTANCE OF 3.182 MILES TO A POINT AT THE INTERSECTION OF LEICESTER WHITING ROAD (TH-1) AND US ROUTE 7, 0.040 MILES EAST OF POLE # 2 / 2 (MM 3.142) TO END THIS SEGMENT OF THE PROJECT.

ON ANOTHER ROAD, BEGINNING AT THE INTERSECTION OF LEICESTER-WHITING ROAD (TH-1) AND SWININGTON HILL ROAD (TH-3) IN THE TOWN OF LEICESTER, DESIGNATING THIS POINT AS MILE POINT 0.000 AND EXTENDING SOUTHERLY ALONG SWININGTON HILL ROAD (TH-3) 0.109 MILES TO A POINT 0.007 MILES SOUTH OF POLE # 223 / 45 / 178A (MM 0.102) TO END THIS SEGMENT OF THE PROJECT.

# NORTH BENNINGTON



BEGINNING AT THE INTERSECTION OF MECHANIC STREET (TH-114) AND COREY ACRES (TH-103) IN THE VILLAGE OF NORTH BENNINGTON, DESIGNATING WHERE THE CENTERLINE OF EACH ROAD INTERSECT AS MILE POINT 0.000 AND EXTENDING EASTERLY ALONG MECHANICS STREET (TH-114) AND ONTO OVERLEA ROAD (TH-117) FOR A TOTAL DISTANCE OF 0.261 MILES TO A POINT 0.004 MILES WEST OF POLE # 76 / 2 / 2 (MM 0.261) TO END THIS SEGMENT OF THE PROJECT.

<b>PROJECT NAME:</b> STATEWIDE SOUTHWEST REGION	<b>PLOT DATE:</b> 12/20/2013
<b>PROJECT NUMBER:</b> STP HRRR(19)	<b>DRAWN BY:</b> N. PATTIS
<b>FILE NAME:</b> I3k036wrk.dgn	<b>CHECKED BY:</b> B. GROSE
<b>PROJECT LEADER:</b> P. COBURN	<b>SHEET</b> 9 <b>OF</b> 87
<b>DESIGNED BY:</b> N. PATTIS	
<b>SITE MAP SHEET</b> 2	