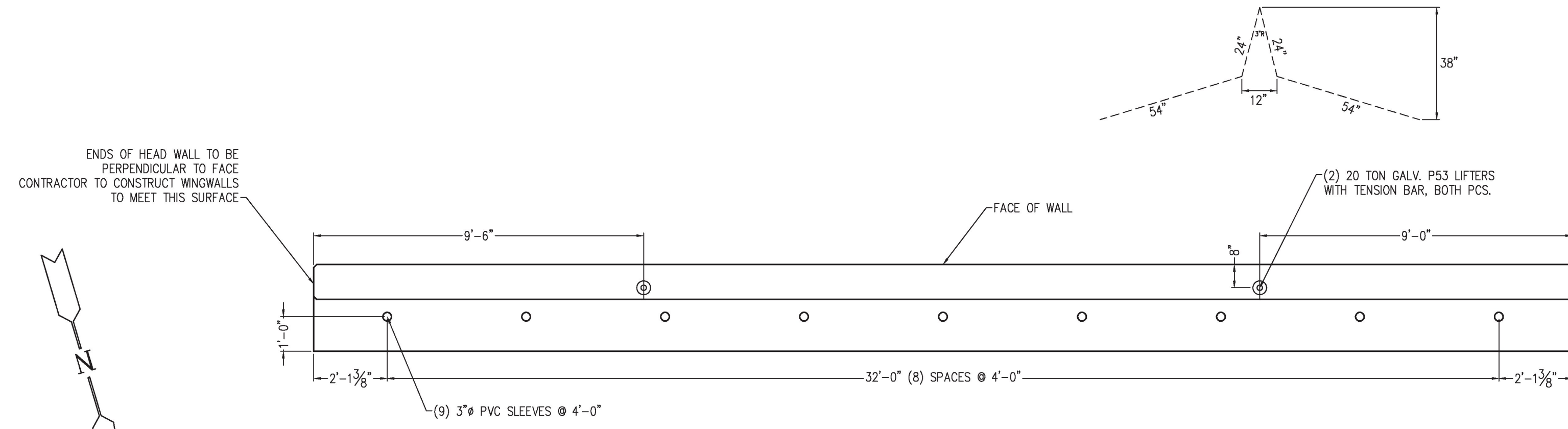
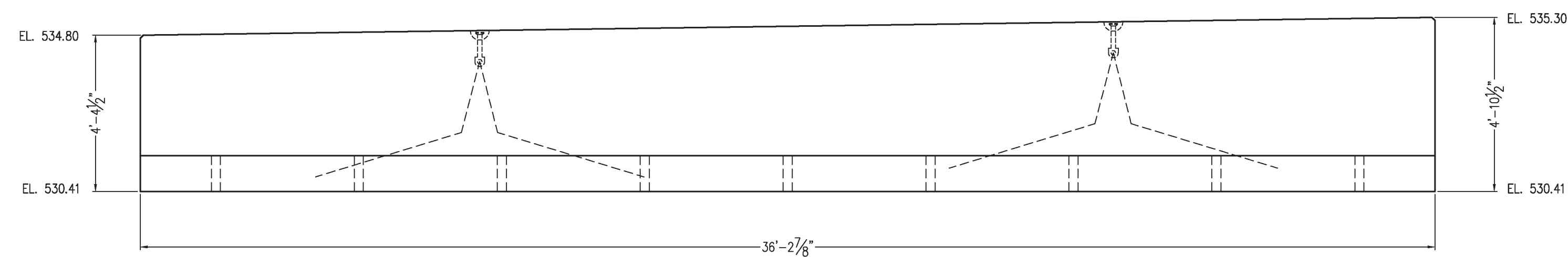


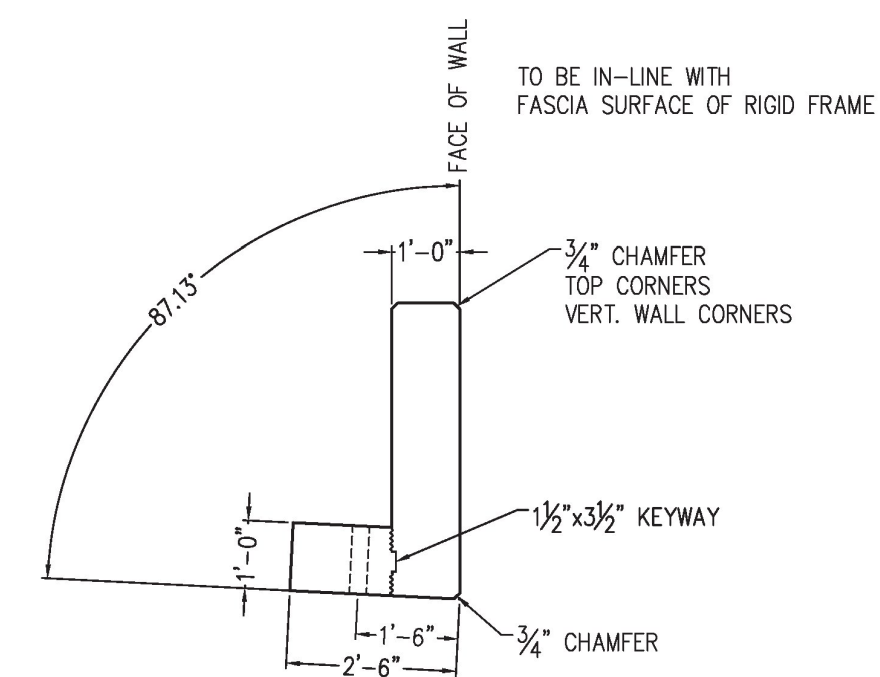
NOTES:  
 1. REINFORCING STEEL DEFORMED BARS CONFORM TO LATEST ASTM A615, GRADE 60, COVER 3". EPOXY COATED REINFORCING  
 2. CONCRETE COMPRESSIVE STRENGTH - 5,000 PSI AT 28 DAYS  
 3. METHOD OF MANUFACTURE: WET CAST.  
 4. HEADWALL UNIT SHALL BE RELEASED FROM JACKS WHEN 4,500 PSI MIN. IS OBTAINED.  
 5. TOLERANCE - PER PCI TOLERANCE MANUAL MIN. 1/32-00  
 6. FINISH - SURFACES TO BE STEEL FORM FINISH  
 7. AFTER STRIPPING STRENGTH IS ACHIEVED, UNIT WILL BE DAMPENED, THEN COMPLETELY WRAPPED WITH POLYETHYLENE SHEETS (PLASTIC) FOR A MINIMUM OF ONE DAY OR UNTIL DESIGN SUBMERGUS IS MET.  
 APPROX. WEIGHT:  
 HEADWALL - 35,000 LBS



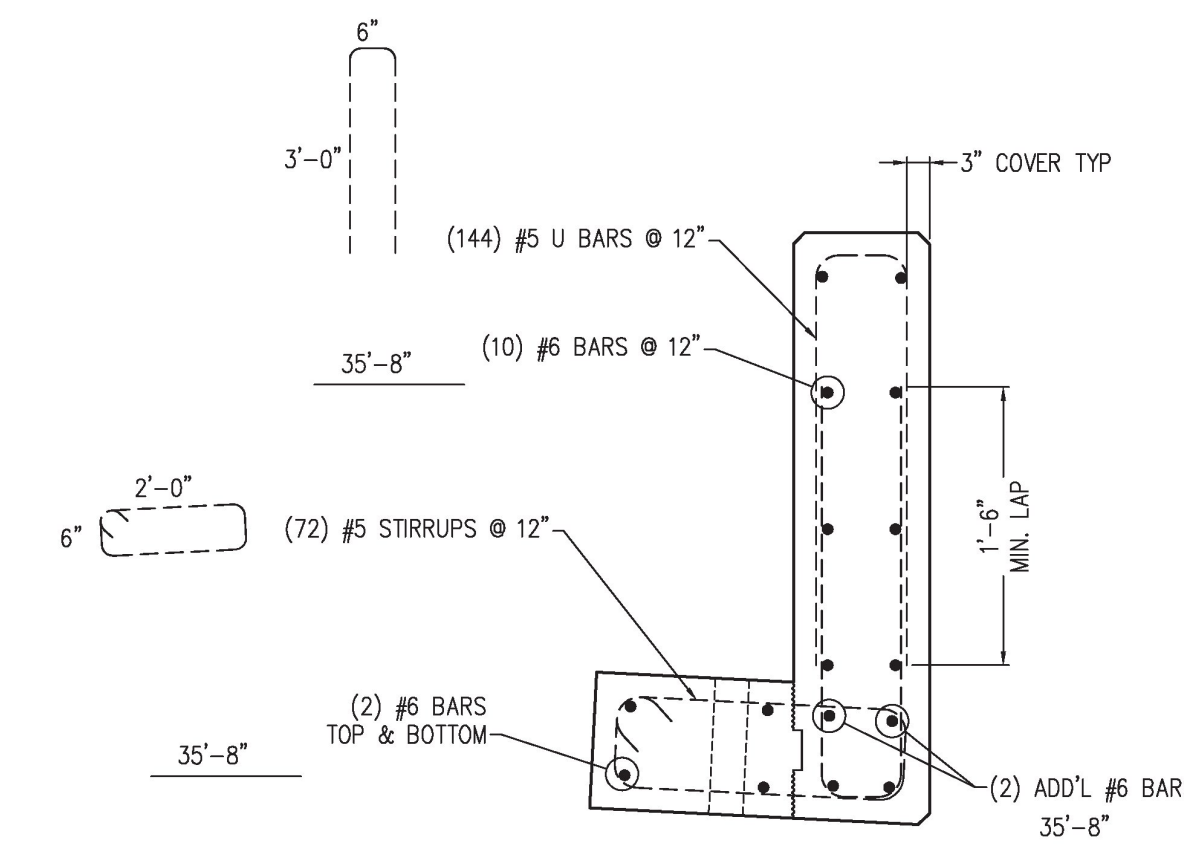
PLAN VIEW  
 DOWNSTREAM HEADWALL  
 (1) REQUIRED



ELEV. VIEW  
 LOOKING AT BACK OF WALL



END VIEW



REINFORCING

**Approved AsNoted**

BY: R. Young  
 DATE: 03/07/19  
 RESUBMIT: No  
 RECEIVED: March 5, 2019  
 CKD BY: G. Laroche/G. Dargan/K. Moulton

STATE OF VERMONT  
 AGENCY OF TRANSPORTATION

UNITED CONCRETE PRODUCTS, Inc. 173 CHURCH STREET YALESVILLE, CT 06492 TEL: (203)-269-3119 FAX: (203)-265-4941	PRECAST CONCRETE DOWNSTREAM HEADWALL		PROJECT #34491	
	CUSTOMER	BUR CONSTRUCTION, LLC	SCALE	NONE
	JOB	BRIDGE 0138(12) IMPROVEMENTS	DATE	11/09/18 SHEET
	LOCATION	POULTNEY, VT	DRW	DH
	REVISED	3-08-2019 DH	CHK	JLT

EPOXY COATED REINFORCING