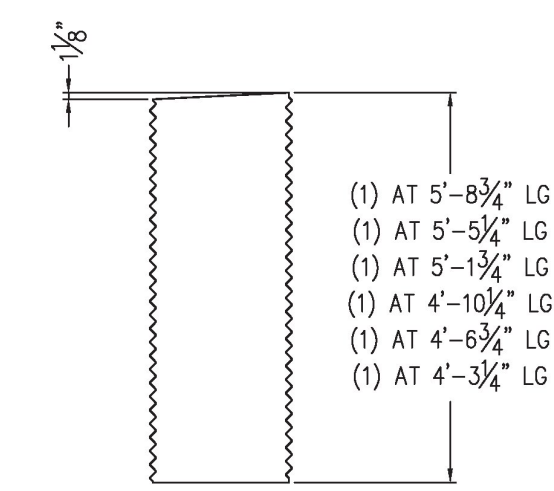
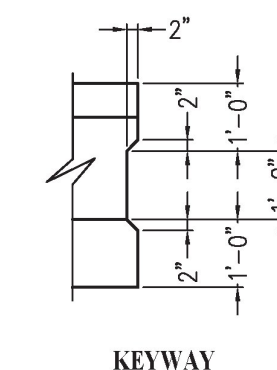
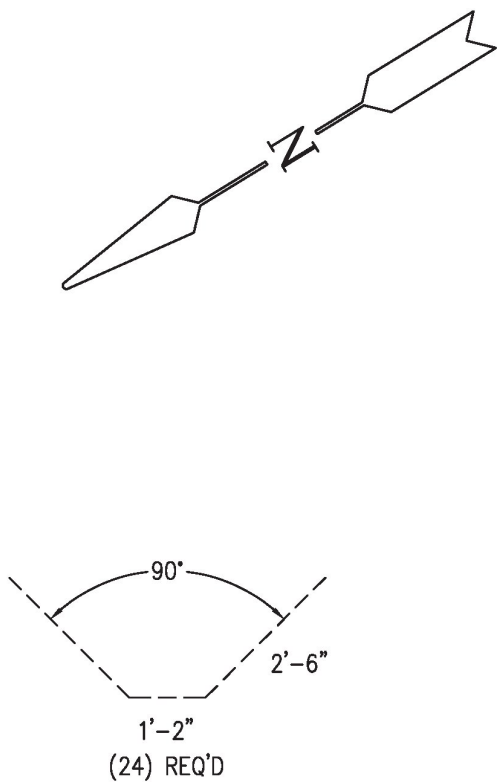


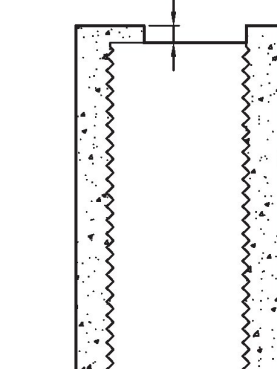
PLAN VIEW
ABUTMENT #2
(1) REQUIRED



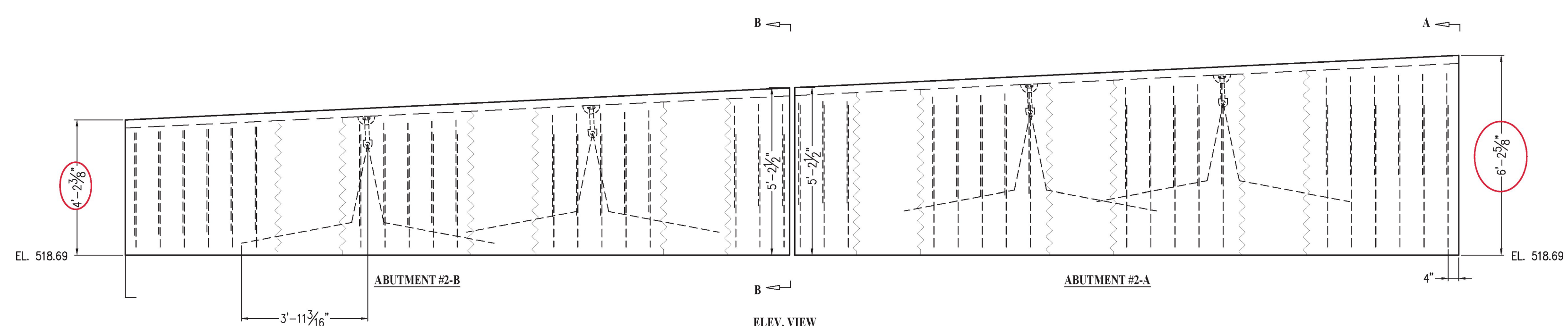
(6) 24" CORRUGATED STEEL PIPE



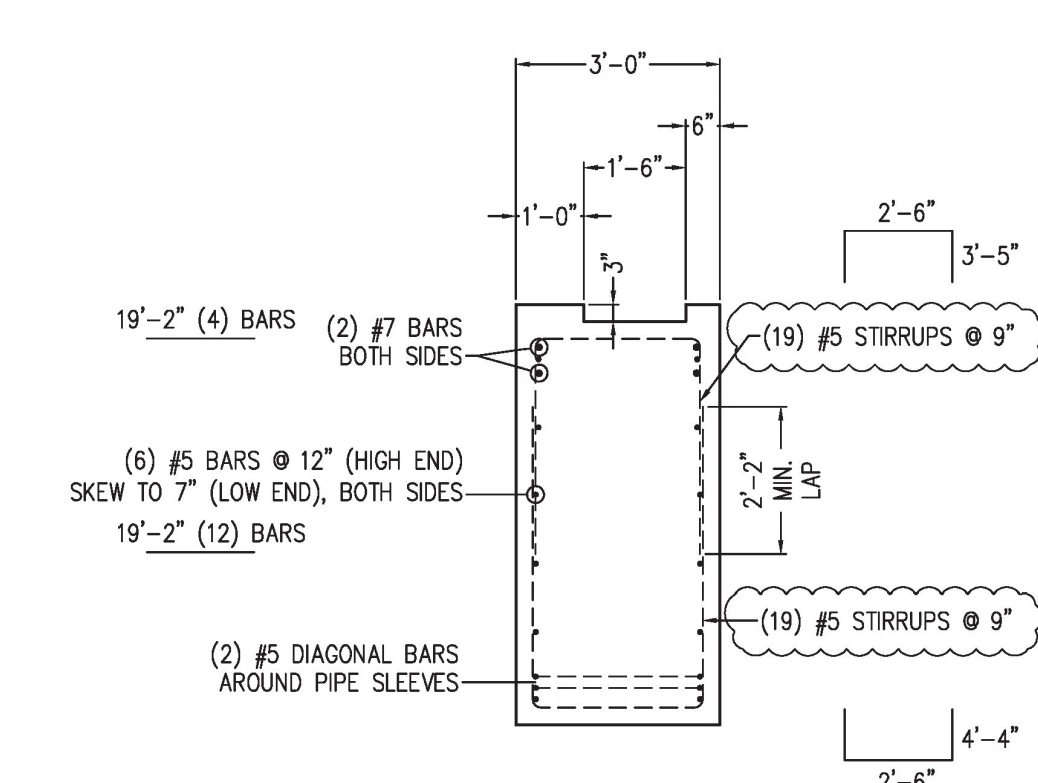
KEYWAY



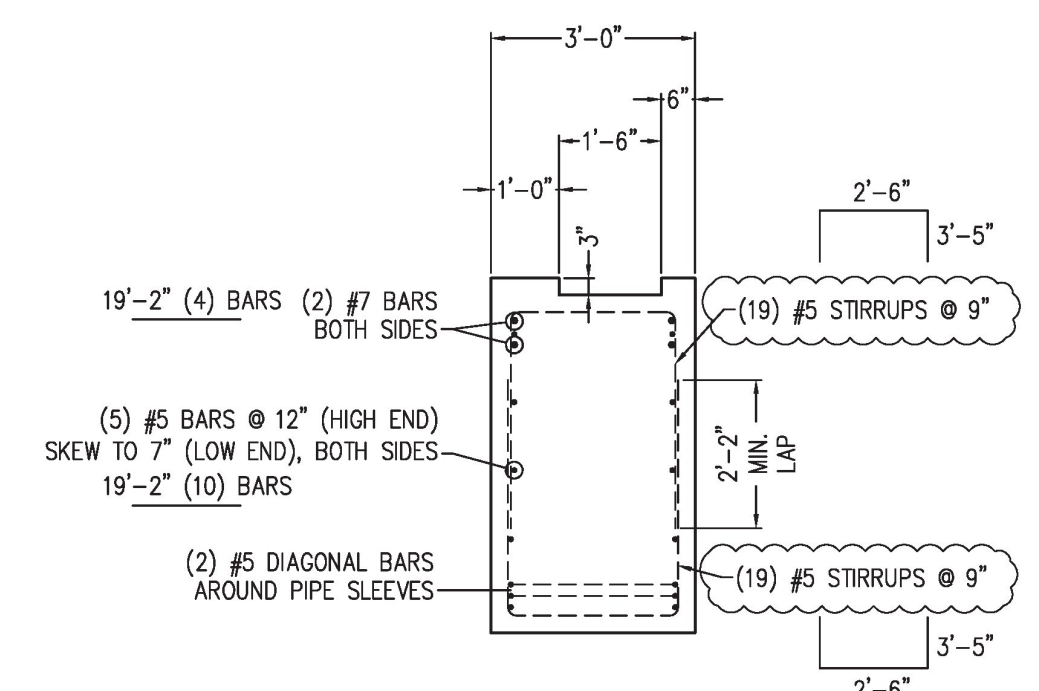
SECTION C-C



ELEV. VIEW



SECTION A-A



SECTION B-B

NOTES:
 1. REINFORCING STEEL DEFORMED BARS CONFORM TO LATEST ASTM A615, GRADE 60, COVER 3". EPOXY COATED REINFORCING.
 2. CONCRETE COMPRESSIVE STRENGTH - 5,000 PSI AT 28 DAYS - SELF-COMACTING CONCRETE MIX - MIX NO. MASS. RDOT, VI 885 HP. AIR ENTRAINMENT 7% ± 2%
 3. METHOD OF MANUFACTURE: WET CAST.
 4. REINFORCING TAKEN FROM VI. AGENCY OF TRANSPORTATION PROJECT #E-0138 (12) SHEET 31 OF 46, DATED 12-11-2018.
 5. ABUTMENT UNIT SHALL BE RELEASED FROM MOLD WHEN 3,500 PSI MIN. STRENGTH.
 6. TOLERANCE - PER PCI TOLERANCE MANUAL MNL 135-00
 7. FINISH - SURFACES TO BE STEEL FORM FINISH AND/OR STEEL-BROWZ-PINER.
 8. CURING - ALLES-STRIPPING-ADRENDA-AS-ACQUIRED UNIT WILL BE DAMPED, THEN COMPLETELY WRAPPED WITH POLYETHYLENE SHEETS (PLASTIC) FOR A MINIMUM OF ONE DAYS OR UNTIL ABSOLUTELY NECESSARY.
 APPROX. WEIGHT:
 ABUTMENT #2A - 47,000 LBS
 ABUTMENT #2B - 38,000 LBS

Approved AsNoted

BY: R. Young
 DATE: 03/07/19
 RESUBMIT: No
 RECEIVED: March 5, 2019
 CKD BY: G. Laroche/G. Dargan/K. Moulton

**STATE OF VERMONT
 AGENCY OF TRANSPORTATION**

EPOXY COATED REINFORCING

UNITED CONCRETE PRODUCTS, Inc. 173 CHURCH STREET YALESVILLE, CT 06492 TEL: (203)-269-3119 FAX: (203)-265-6941	PRECAST CONCRETE ABUTMENT #2		PROJECT #34491	
	CUSTOMER	BUR CONSTRUCTION, LLC	SCALE	NONE
	JOB	BRIDGE 0138(12) IMPROVEMENTS	DATE	11/09/18
	LOCATION	POULTNEY, VT	DRW	DH
	REVISED	3-06-2019 DH	CHK	JLT