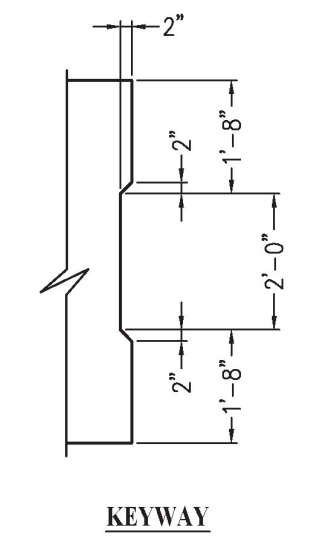
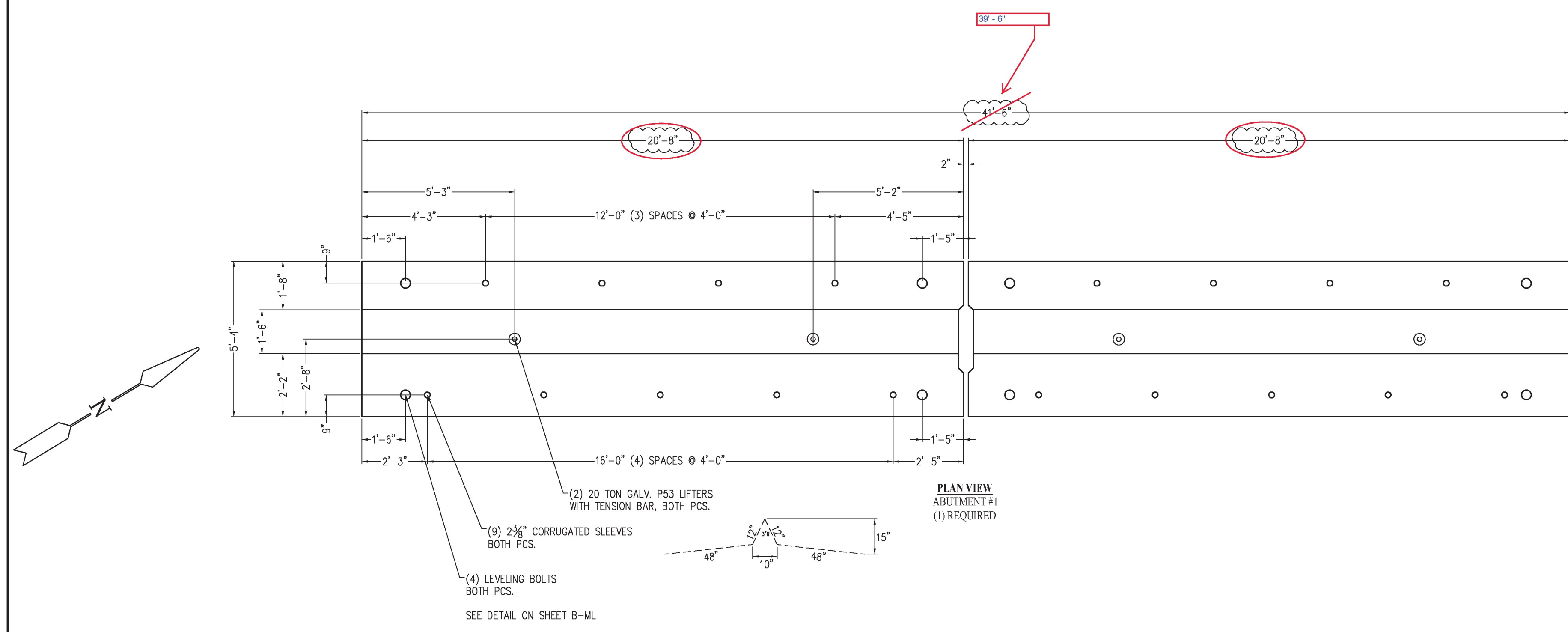
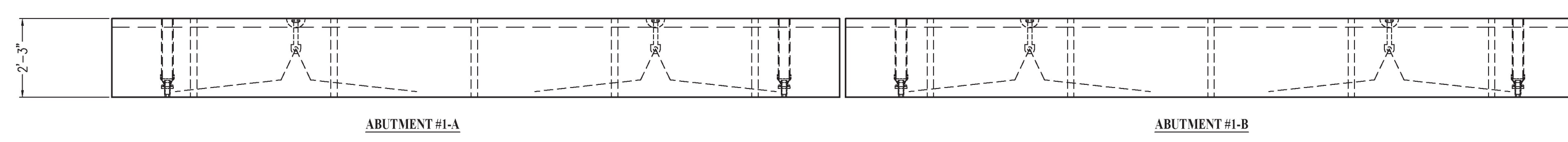


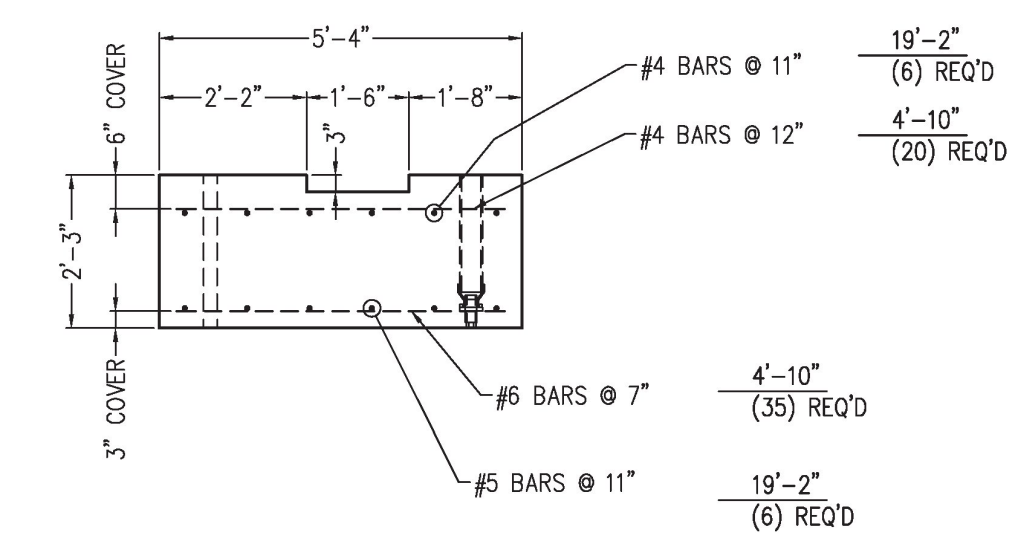
NOTES:  
 1. REINFORCING STEEL DEFORMED BARS CONFORM TO LATEST ASTM A615, GRADE 60, COVER 3".  
 2. CONCRETE COMPRESSIVE STRENGTH - SLAB F53 AT 28 DAYS SELF-COMPACTING CONCRETE MIX  
 MIX NO. MASS. ROOT, VT. 685 HP.  
 "PRE-ENRICHMENT" 75-1200  
 3. METHOD OF MANUFACTURE: NET CAST.  
 4. REINFORCING TAKEN FROM VT. AGENCY OF TRANSPORTATION PROJECT #038(12)  
 SHEET 01 OF 46 DATED 12-17-2018  
 5. -ABUTMENT UNIT SHALL BE RELEASED FROM MOLD WHEN 3500 PSI MIN IS OBTAINED.  
 6. FINISH - SURFACES TO BE STEEL FORM FINISH - SAND/SL-STEEL-PROWD-DASH.  
 7. TOLERANCE - PER PG TOLERANCE MANUAL MW 135-00  
 8. FINISH - SURFACES TO BE STEEL FORM FINISH - SAND/SL-STEEL-PROWD-DASH.  
 9. CURING - AFTER STRIPPING STRENGTH IS ACHIEVED, UNIT WILL BE DAMPENED, THEN COMPLETELY WRAPPED WITH POLYETHYLENE SHEETS (PLASTIC) FOR A MINIMUM OF ONE DAY OR UNTIL DESIGN STRENGTH IS MET.  
 APPROX. WEIGHT:  
 ABUTMENT #1A - 38,000 LBS  
 ABUTMENT #1B - 38,000 LBS



KEYWAY



ELEV. VIEW



END VIEW

**Approved AsNoted**

BY: R. Young  
 DATE: 03/07/19  
 RESUBMIT: No  
 RECEIVED: March 5, 2019  
 CKD BY: G. Laroche/G. Dargan/K. Moulton

STATE OF VERMONT  
 AGENCY OF TRANSPORTATION

**EPOXY COATED REINFORCING**

UNITED CONCRETE PRODUCTS, Inc. 173 CHURCH STREET YALESVILLE, CT 06492 TEL: (203)-269-3119 FAX: (203)-265-4941	<b>PRECAST CONCRETE ABUTMENT #1</b>		<b>PROJECT #34491</b>	
	CUSTOMER	BUR CONSTRUCTION, LLC	SCALE	NONE
	JOB	BRIDGE 0138(12) IMPROVEMENTS	DATE	11/09/18
	LOCATION	POULTNEY, VT	DRW	DH
	REVISED	3-08-2019 DH	CHK	JLT