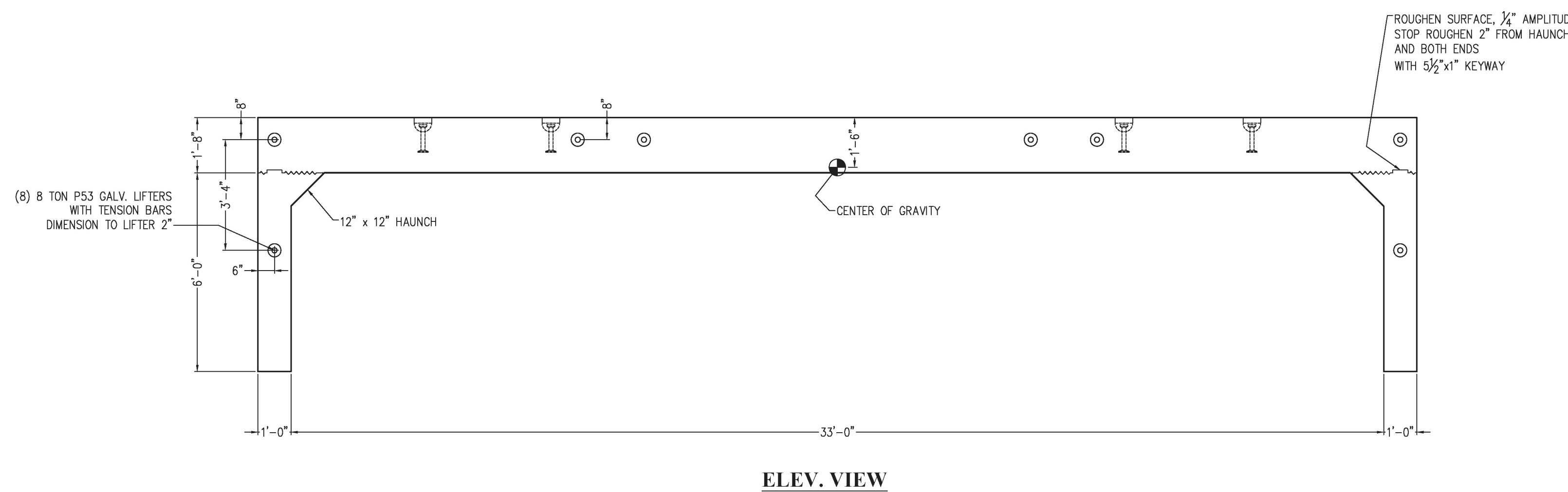
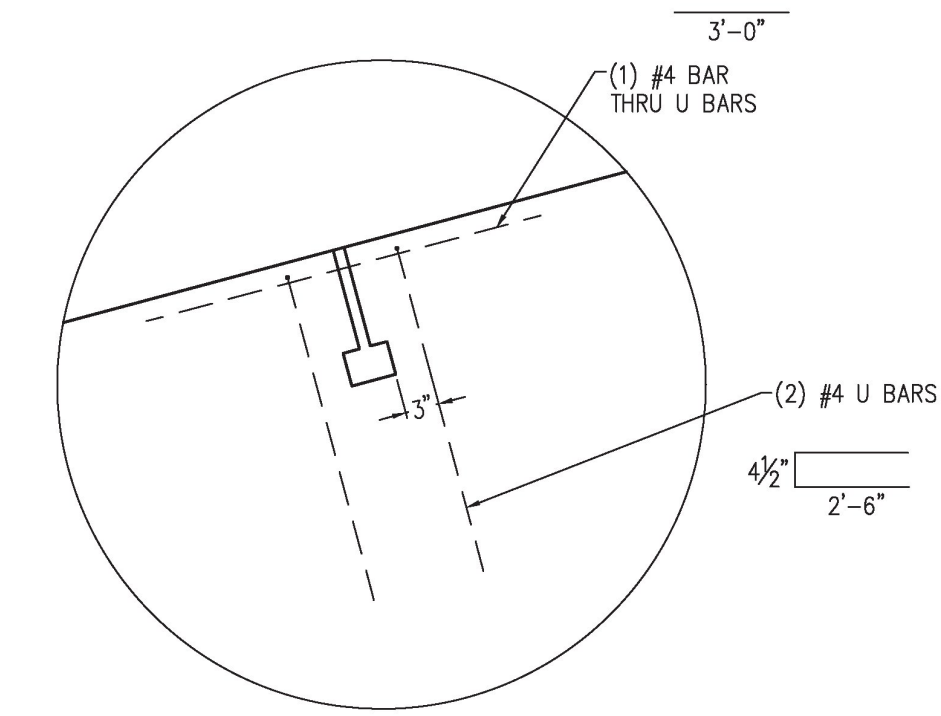


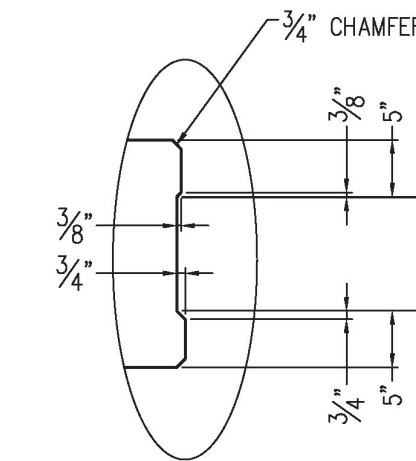
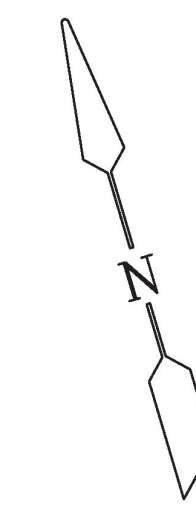
**PLAN VIEW**  
PC. D  
(1) REQUIRED



**ELEV. VIEW**



**BOLT POCKET DETAIL**

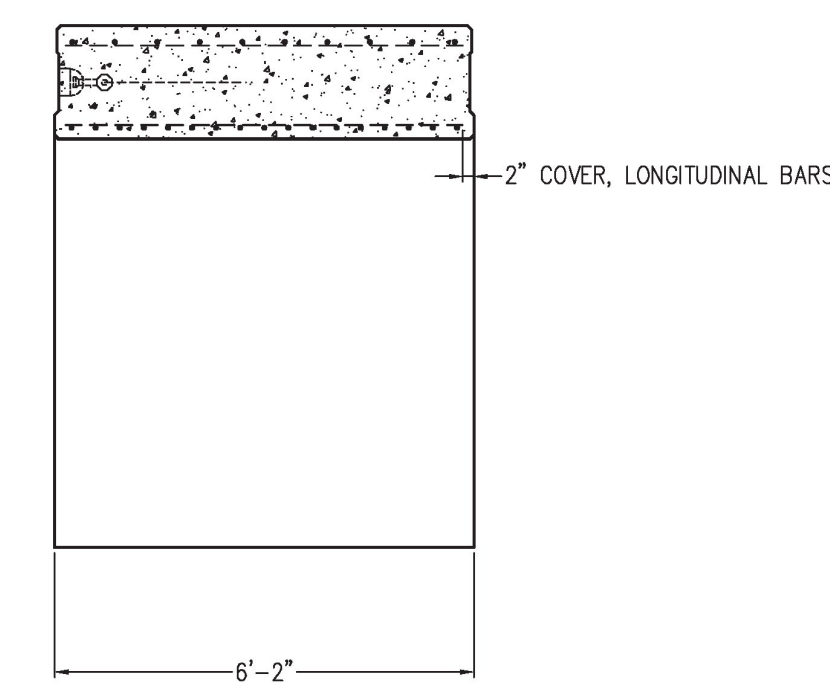


**ROOF SLAB JOINT DETAIL**

- NOTES:**
1. REINFORCING STEEL DEFORMED BARS CONFORM TO LATEST ASTM SPECIFICATION A615, GRADE 60 EPOXY COATED REINFORCING
  2. CONCRETE COMPRESSIVE STRENGTH - 5,000 PSI AT 28 DAYS SELF-COMPACTING CONCRETE MIX MIX NO. MASS, RIDOT, VT 685 HP. AIR ENTRAINMENT 7% ± 1/2%
  3. METHOD OF MANUFACTURE: WET CAST
  4. THE STRUCTURE IS DESIGN AASHTO LRFD BRIDGE DESIGN SPEC. DESIGN LOAD HL-93 EARTH COVER 4'-0" TO 5'-3" BRIDGE UNIT SHALL BE RELEASED FROM MOLD WHEN 3,500 PSI MIN IS OBTAINED.
  5. SEE SHEET B-3 FOR TYP. REINFORCING.
  6. TOLERANCE - PER PCI TOLERANCE MANUAL MNL 135-00 FIG. 10.25.1 EXCEPT FOR FLOOR
  7. FINISH - SURFACES TO BE STEEL FORM FINISH AND/OR STEEL TROWEL FINISH.
  8. CURING - AFTER STRIPPING STRENGTH IS ACHIEVED, UNIT WILL BE DAMPENED, THEN COMPLETELY WRAPPED WITH POLYETHYLENE SHEETS (PLASTIC) FOR A MINIMUM OF ONE DAYS OR UNTIL DESIGN STRENGTH IS MET.

APPROX. WEIGHT:  
PC. D - 73,000 LBS.

ALL LIFTERS:  
DIMENSION TO TOP OF LIFTER  
EQUAL TO REINFORCING COVER.



**SECTION VIEW**

**Approved AsNoted**

BY: R. Young  
DATE: 03/07/19  
RESUBMIT: No  
RECEIVED: March 5, 2019  
CKD BY: G. Laroche/G. Dargan/K. Moulton

**STATE OF VERMONT**  
**AGENCY OF TRANSPORTATION**

**EPOXY COATED REINFORCING**

<b>UNITED CONCRETE PRODUCTS, Inc.</b> 173 CHURCH STREET YALESVILLE, CT 06492 TEL: (203)-269-3119 FAX: (203)-265-4941	<b>PRECAST CONCRETE THREE SIDED BRIDGE PC. D</b>		<b>PROJECT #34491</b>	
	CUSTOMER	BUR CONSTRUCTION, LLC	SCALE	NONE
	JOB	BRIDGE 0138(12) IMPROVEMENTS	DATE	11/09/18
	LOCATION	POULTNEY, VT	DRW	DH
	REVISED	3-06-2019 DH	CHK	JLT