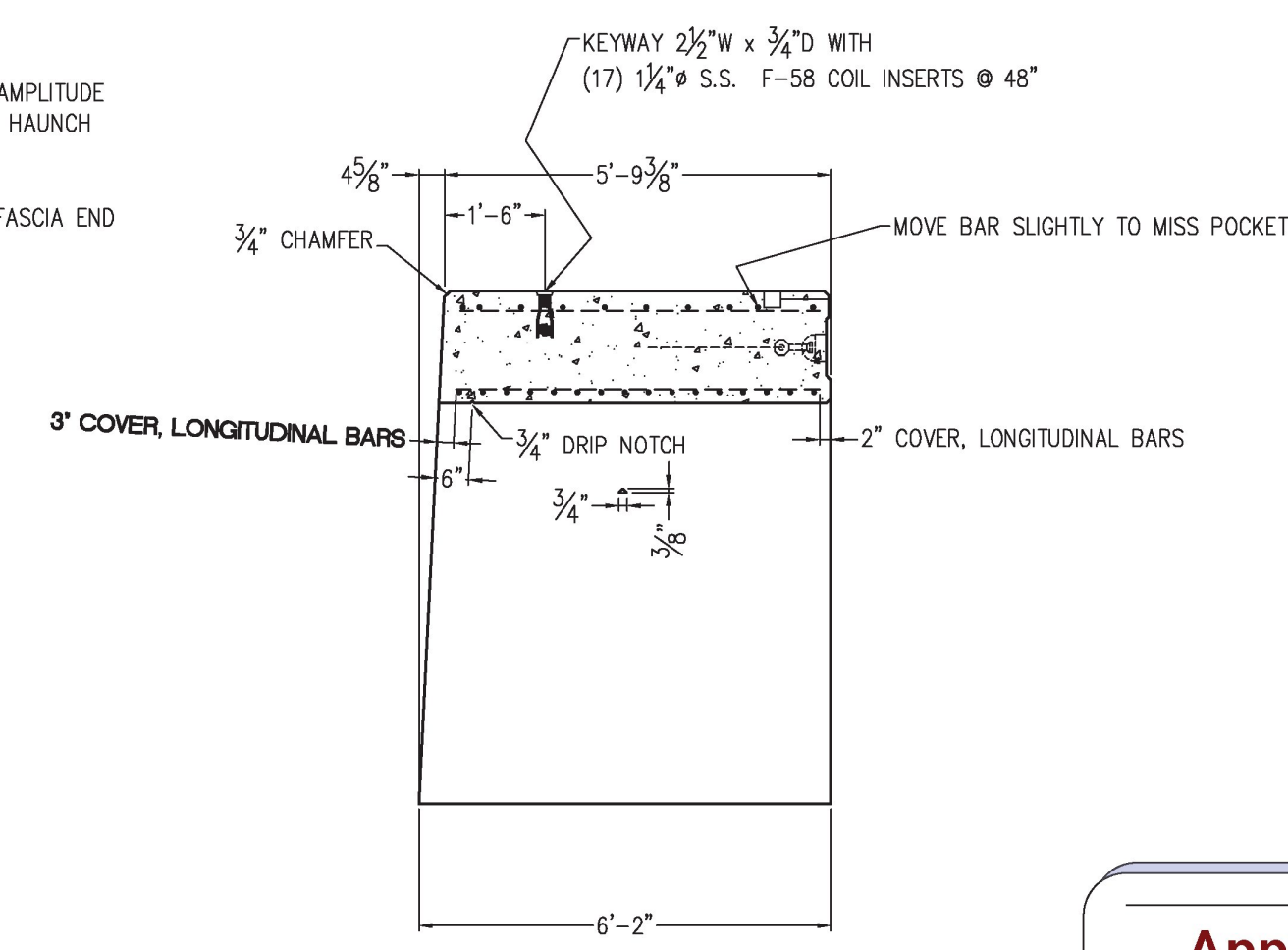
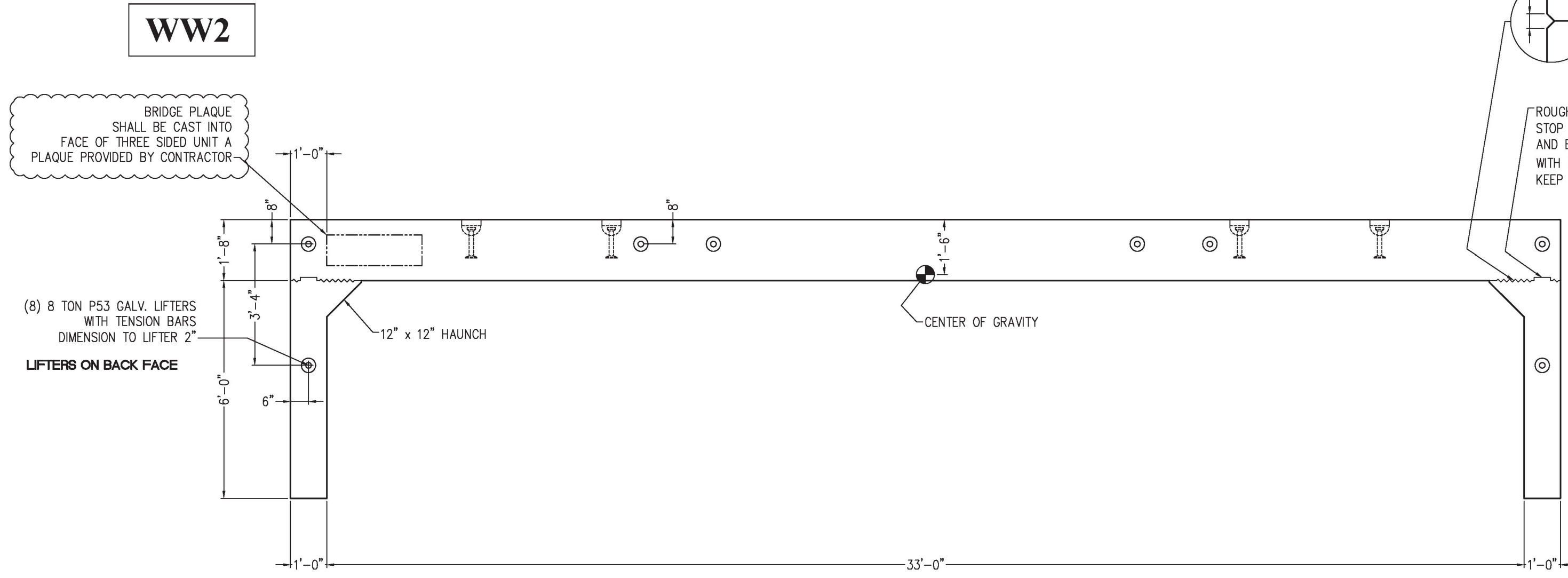
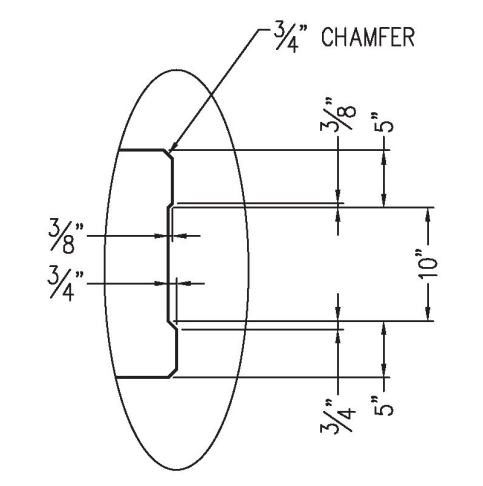


- NOTES:**
- REINFORCING STEEL DEFORMED BARS CONFORM TO LATEST ASTM SPECIFICATION A615, GRADE 60 EPOXY COATED REINFORCING
 - CONCRETE COMPRESSIVE STRENGTH - 5000 PSI AT 28 DAYS
SELF-COMPACTING CONCRETE-MIX MIX No. MASS, RIDOT, VT 685 HP.
AIR-ENTRAINMENT - 3% ± 1/2%
 - METHOD OF MANUFACTURE: WET CAST.
 - THE STRUCTURE IS DESIGN ASHOTO LRFD BRIDGE DESIGN SPEC. DESIGN LOAD HL-93 EARTH COVER 4'-0" TO 5'-3"
 - BRIDGE UNIT SHALL BE RELEASED FROM MOLD WHEN 3,500 PSI MIN IS OBTAINED.
 - SEE SHEET B-3 FOR TYP. REINFORCING. KEEP LONGITUDINAL BARS 3" FROM FASCIA END ALTER LENGTH AND QUANTITY OF BARS AS NEEDED
 - TOLERANCE - PER PCI TOLERANCE MANUAL MIN. 135-00 FIG. 10.25.1 EXCEPT FOR FLOOR
 - FINISH - SURFACES TO BE STEEL FORM FINISH AND/OR STEEL-BROWEL FINISH
 - CURING - AFTER STRIPPING STRENGTH IS ACHIEVED, UNIT WILL BE DAMPENED, THEN COMPLETELY WRAPPED WITH POLYETHYLENE SHEETS (PLASTIC) FOR A MINIMUM OF ONE DAYS OR UNTIL DESIGN STRENGTH IS MET.
- APPROX. WEIGHT:
PC. A - 73,000 LBS.
- ALL LIFTERS:
DIMENSION TO TOP OF LIFTER
EQUAL TO REINFORCING COVER.



Approved AsNoted

BY: R. Young
DATE: 03/07/19
RESUBMIT: No
RECEIVED: March 5, 2019
CKD BY: G. Laroche/G. Dargan/K. Moulton

**STATE OF VERMONT
AGENCY OF TRANSPORTATION**

EPOXY COATED REINFORCING

UNITED CONCRETE PRODUCTS, Inc. 173 CHURCH STREET YALESVILLE, CT 06492 TEL: (203)-269-3119 FAX: (203)-265-4941	PRECAST CONCRETE THREE SIDED BRIDGE PC. A		PROJECT #34491	
	CUSTOMER	BUR CONSTRUCTION, LLC	SCALE	NONE
	JOB	BRIDGE 0138(12) IMPROVEMENTS	DATE	11/09/18
	LOCATION	POULTNEY, VT	DRW	DH
	REVISED	3-06-2019 DH	CHK	JLT