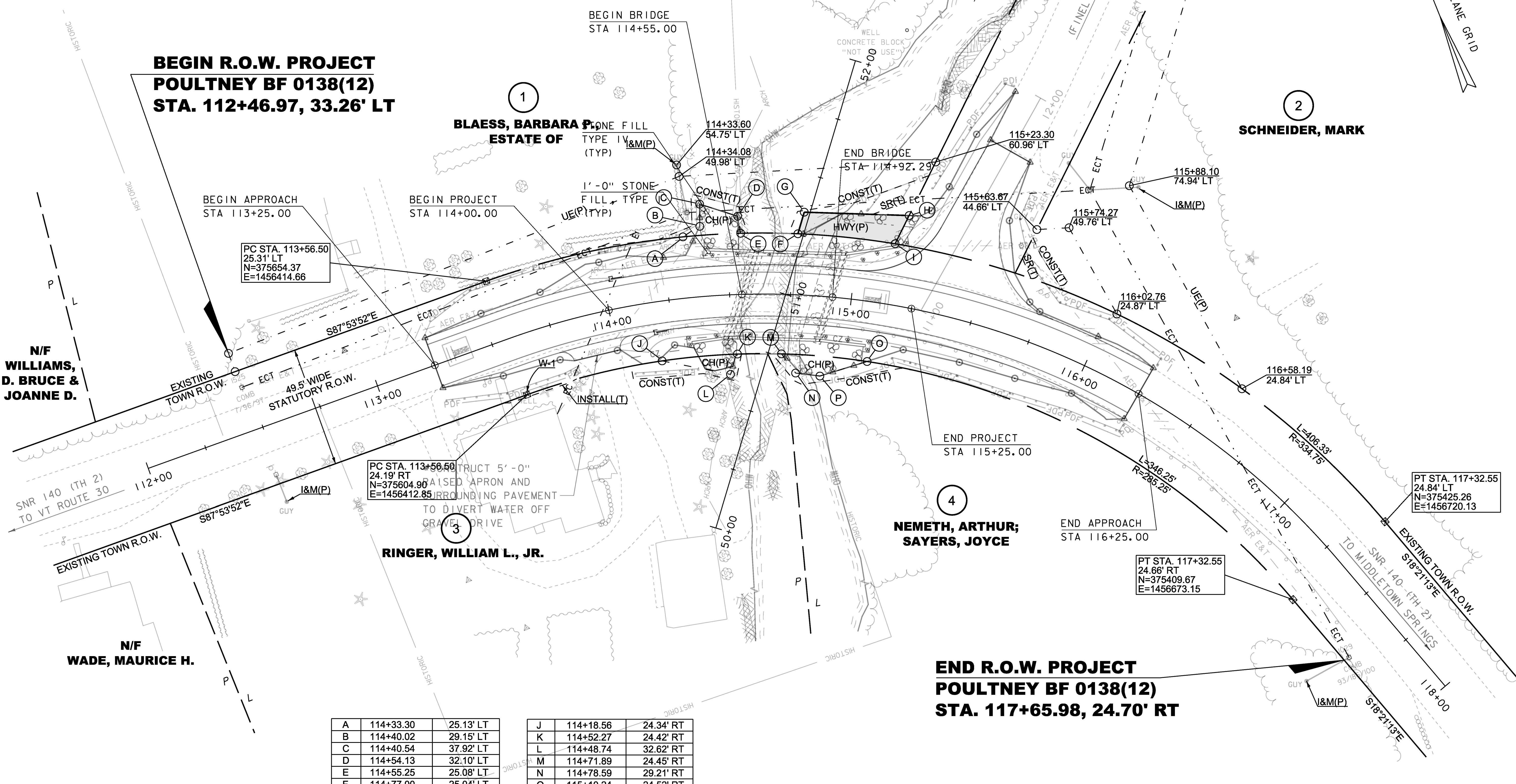


CONSTRUCT AGGREGATE SURFACE COURSE  
 DRIVES W/ 5'-0" PAVED APRONS  
 STA 113+91.0 RT - 19.00' WIDE\*

REMOVAL AND DISPOSAL OF GUARDRAIL  
 STA 114+24.3 RT - 114+52.0 RT  
 STA 114+28.2 LT - 114+51.9 LT  
 STA 114+81.4 RT - 115+40.1 RT  
 STA 114+82.1 LT - 11+45.0 LT

**BEGIN R.O.W. PROJECT  
 POULTNEY BF 0138(12)  
 STA. 112+46.97, 33.26' LT**

**END R.O.W. PROJECT  
 POULTNEY BF 0138(12)  
 STA. 117+65.98, 24.70' RT**



N/F  
**WILLIAMS,  
 D. BRUCE &  
 JOANNE D.**

N/F  
**WADE, MAURICE H.**

1  
**BLAESS, BARBARA P.  
 ESTATE OF**

3  
**RINGER, WILLIAM L., JR.**

4  
**NEMETH, ARTHUR;  
 SAYERS, JOYCE**

2  
**SCHNEIDER, MARK**

A	114+33.30	25.13' LT
B	114+40.02	29.15' LT
C	114+40.54	37.92' LT
D	114+54.13	32.10' LT
E	114+55.25	25.08' LT
F	114+77.00	25.04' LT
G	114+79.00	34.00' LT
H	115+17.52	37.37' LT
I	115+14.12	25.01' LT
FG	N38°13'49"E	9.23'
GH	S66°15'12"E	43.07'
HI	S48°19'05"W	12.92'
IF	R=334.75'	40.13'

J	114+18.56	24.34' RT
K	114+52.27	24.42' RT
L	114+48.74	32.62' RT
M	114+71.89	24.45' RT
N	114+78.59	29.21' RT
O	115+10.24	24.52' RT
P	114+89.79	32.70' RT

LINES SHOWN ON THIS PLAN AS EXISTING  
 PROPERTY LINES P/L ARE BELIEVED TO  
 BE ACCURATE BUT SHOULD NOT BE RELIED  
 UPON FOR PURPOSES UNRELATED TO THE  
 TOWN OF POULTNEY'S ACQUISITION OF LAND  
 AND RIGHTS FOR THIS PROJECT.

SCALE 1" = 20'-0"  
 20 0 20

PROJECT NAME:	POULTNEY	PLOT DATE:	15-AUG-2018
PROJECT NUMBER:	BF 0138(12)	DRAWN BY:	A. PROULX
FILE NAME:	s13j276bdr_row.dgn	CHECKED BY:	S. PATTERSON
PROJECT LEADER:	R. YOUNG	R.O.W. LAYOUT	SHEET 46 OF 46
DESIGNED BY:	G. DARGAN		