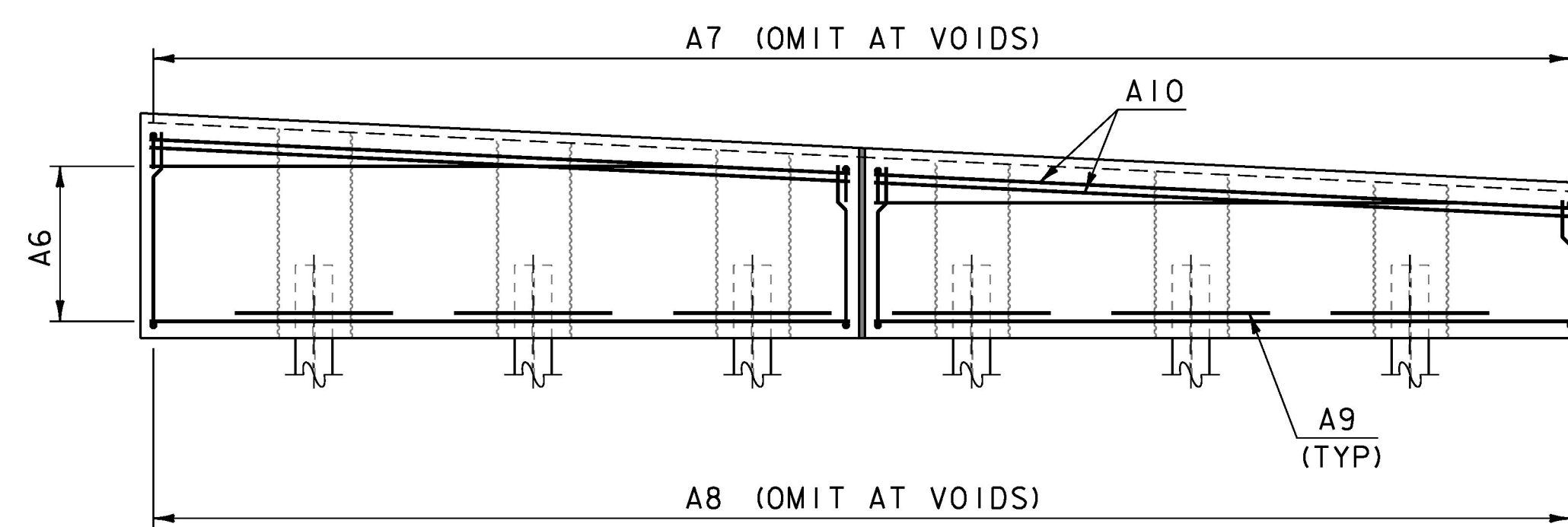
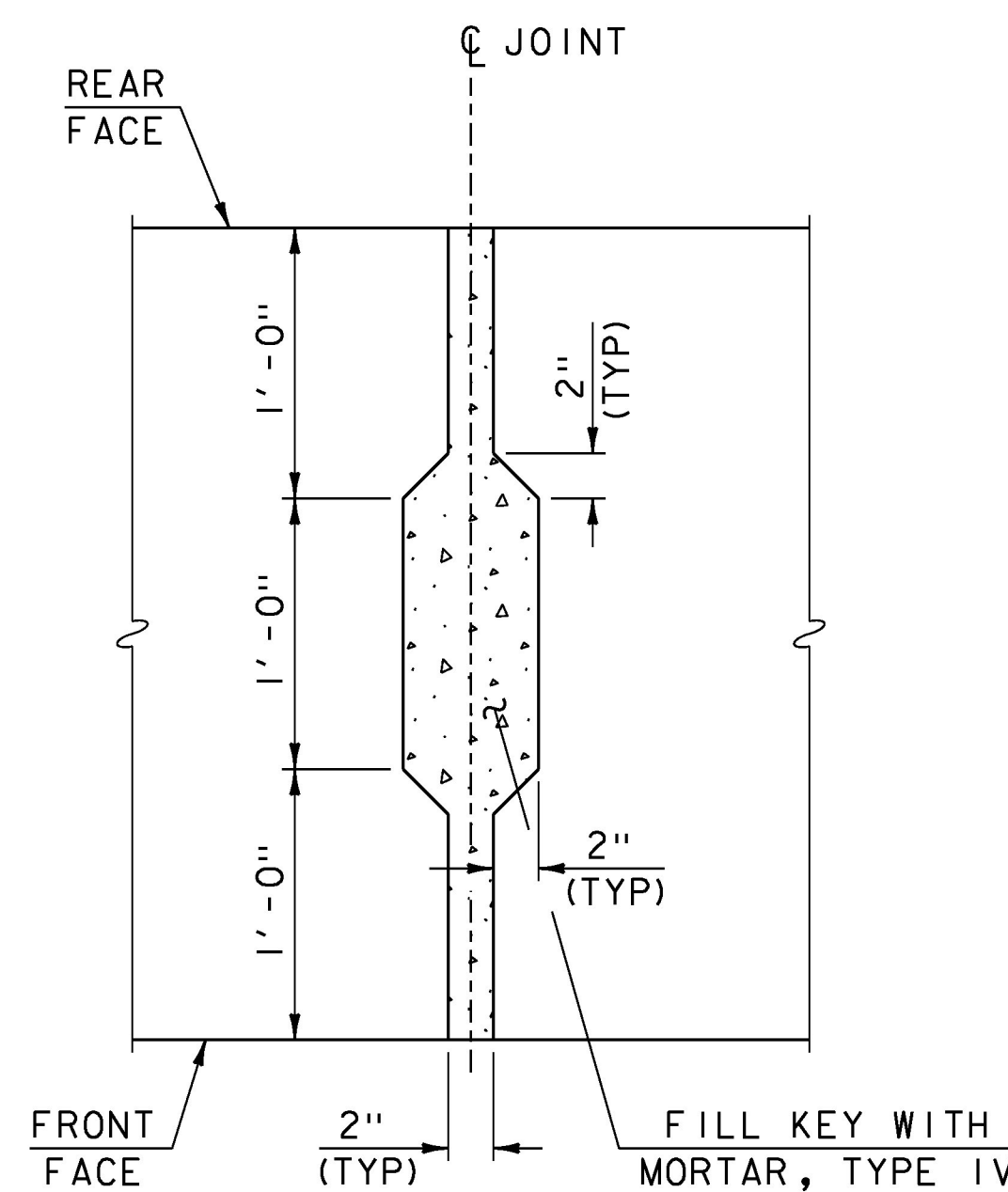


ABUTMENT NO. 2 REINFORCING PLAN
SCALE: 1/4" = 1'-0"



ABUTMENT NO. 2 REINFORCING ELEVATION
SCALE: 1/4" = 1'-0"

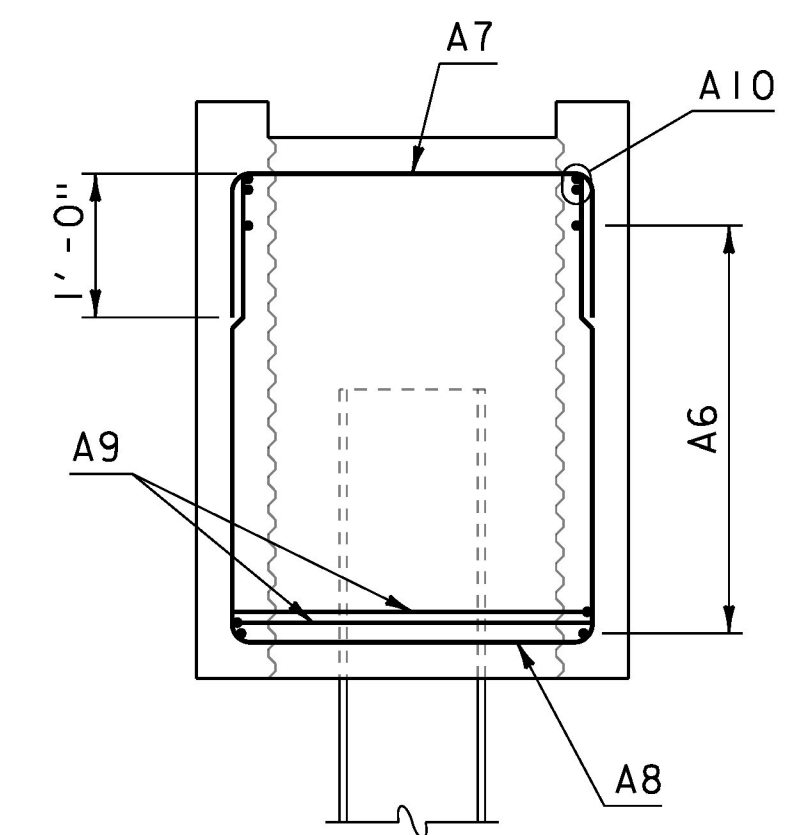
BAR	SIZE	SPACING	TYPE
A6	5	12"	STR
A7	4	9"	S10
A8	5	9"	S10
A9	5	AS SHOWN	I4
A10	7	AS SHOWN	STR



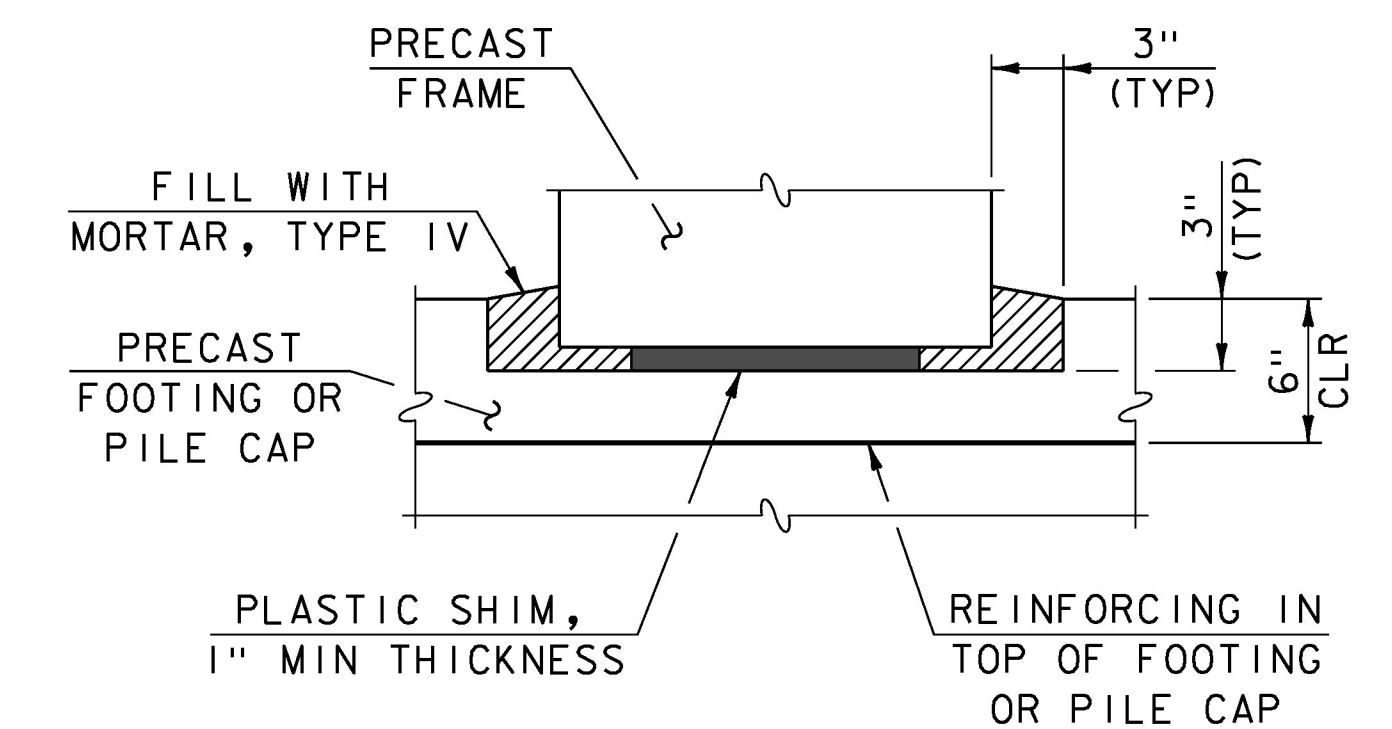
NOTE:
CONTRACTOR TO FORM JOINT TO SUPPORT WET GROUT.

ABUTMENT NO. 2 SHEAR KEY PLAN VIEW
NOT TO SCALE

LOCATIONS AND NUMBER OF ABUTMENT NO. 2 VERTICAL JOINTS MAY BE MODIFIED BY THE CONTRACTOR TO SUIT THEIR MEANS AND METHODS. EACH INDIVIDUAL UNIT SHALL BE PLACED ON A MINIMUM OF TWO PILES.



ABUTMENT NO. 2 TYPICAL REINFORCING
SCALE: 3/4" = 1'-0"



FOOTING TO STEM CONNECTION DETAIL
NOT TO SCALE

PLASTIC SHIMS SHALL BE CAPABLE OF SUPPORTING THE WEIGHT OF THE PRECAST UNITS AND SPACED AS REQUIRED TO PROVIDE A 1" MINIMUM GAP TO ALLOW FOR THE PLACEMENT OF 1" OF MORTAR, TYPE IV. SHIMS SHALL ALSO ALLOW FOR FINAL GRADE ADJUSTMENTS AS NECESSARY.

NOTE:
NF = NEAR FACE
FF = FAR FACE
EF = EACH FACE
▲ = CUT TO FIT IN FIELD
3" CLEAR UNLESS OTHERWISE NOTED
2'-2" BAR LAP UNLESS OTHERWISE NOTED

KEY	DATE	BY	REVISION
△	12/11/2018	VAOT	REVISED REINFORCING STEEL SPACING.

PROJECT NAME:	POULTNEY	FILE NAME:	sl3j276sub.dgn	PLOT DATE:	11-DEC-2018
PROJECT NUMBER:	BF 0138(12)	PROJECT LEADER:	R. YOUNG	DRAWN BY:	G. ROY
		DESIGNED BY:	G. DARGAN	CHECKED BY:	G. LAROCHE
		ABUTMENT NO. 2 DETAILS		SHEET	31 OF 46