

GPS CONTROL POINTS

HVCTRL #1
 ON THE GREEN 2014
 NORTH = 373371.7102
 EAST = 1450418.8047
 ELEV. = 479.690

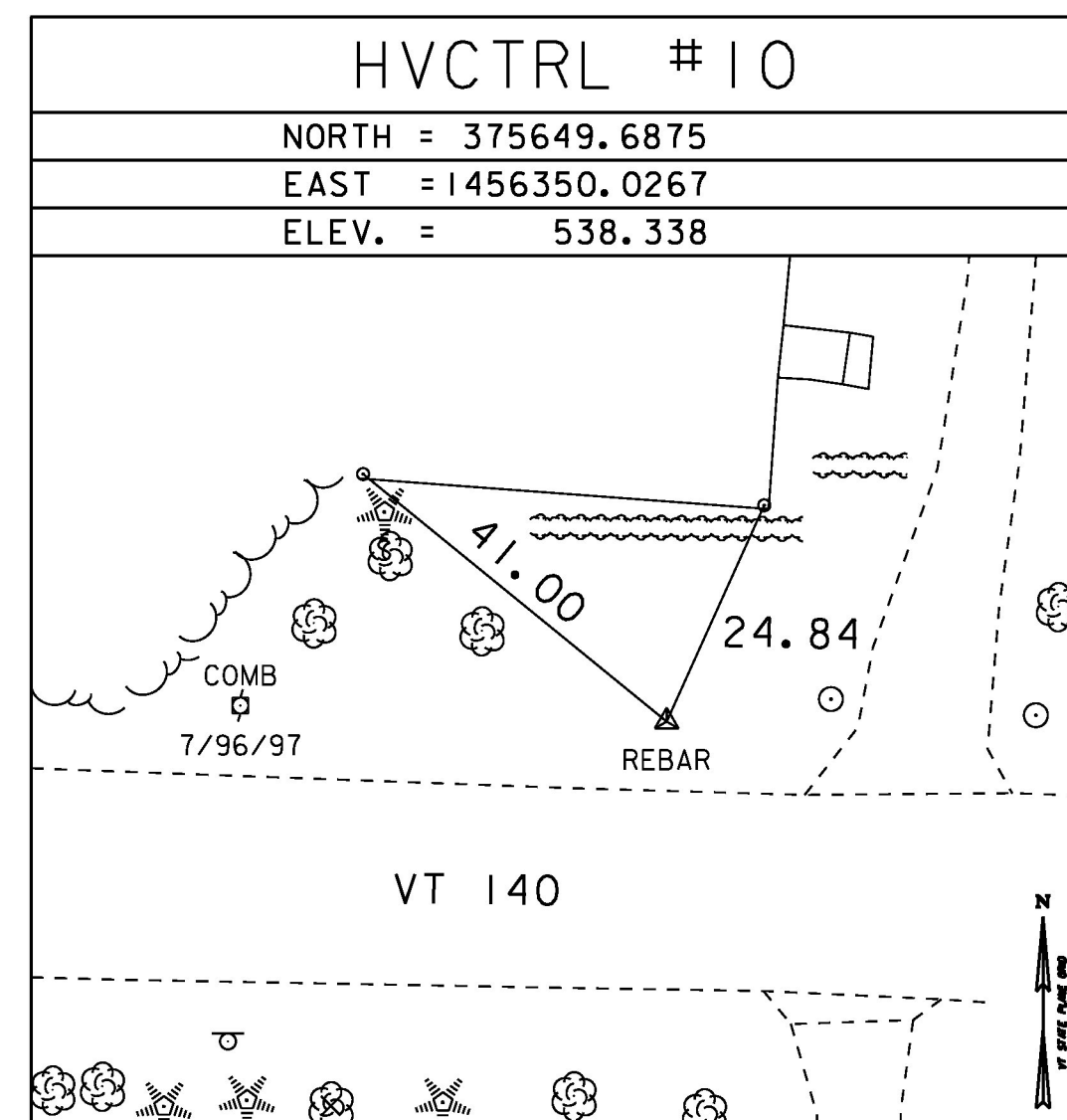
THE MARK IS SET 5 CM BELOW GROUND SURFACE IN THE TOP OF A FENO STYLE MONUMENT IN A SMALL GRASS TRIANGLE NORTH OF THE EAST POULTNEY GREEN. IT IS 6.4 M SOUTHWEST OF THE CENTERLINE OF VT ROUTE 140, 2.3 M NORTH OF THE NORTH EDGE OF PAVEMENT OF THE ROAD PASSING SOUTH OF THE TRIANGLE, 18.0 M SOUTH OF AND ACROSS THE ROAD FROM POLE NO 7/78/78 WITH TRANSFORMER, 5.7 M EAST OF A STOP SIGN AND 15.0 M SOUTHWEST OF AND ACROSS THE ROAD FROM A WELCOME TO POULTNEY (ESTABLISHED 1761) SIGN.

HVCTRL #2
 RIVERSIDE GAR 2014
 NORTH = 374841.5724
 EAST = 1453392.4792
 ELEV. = 510.020

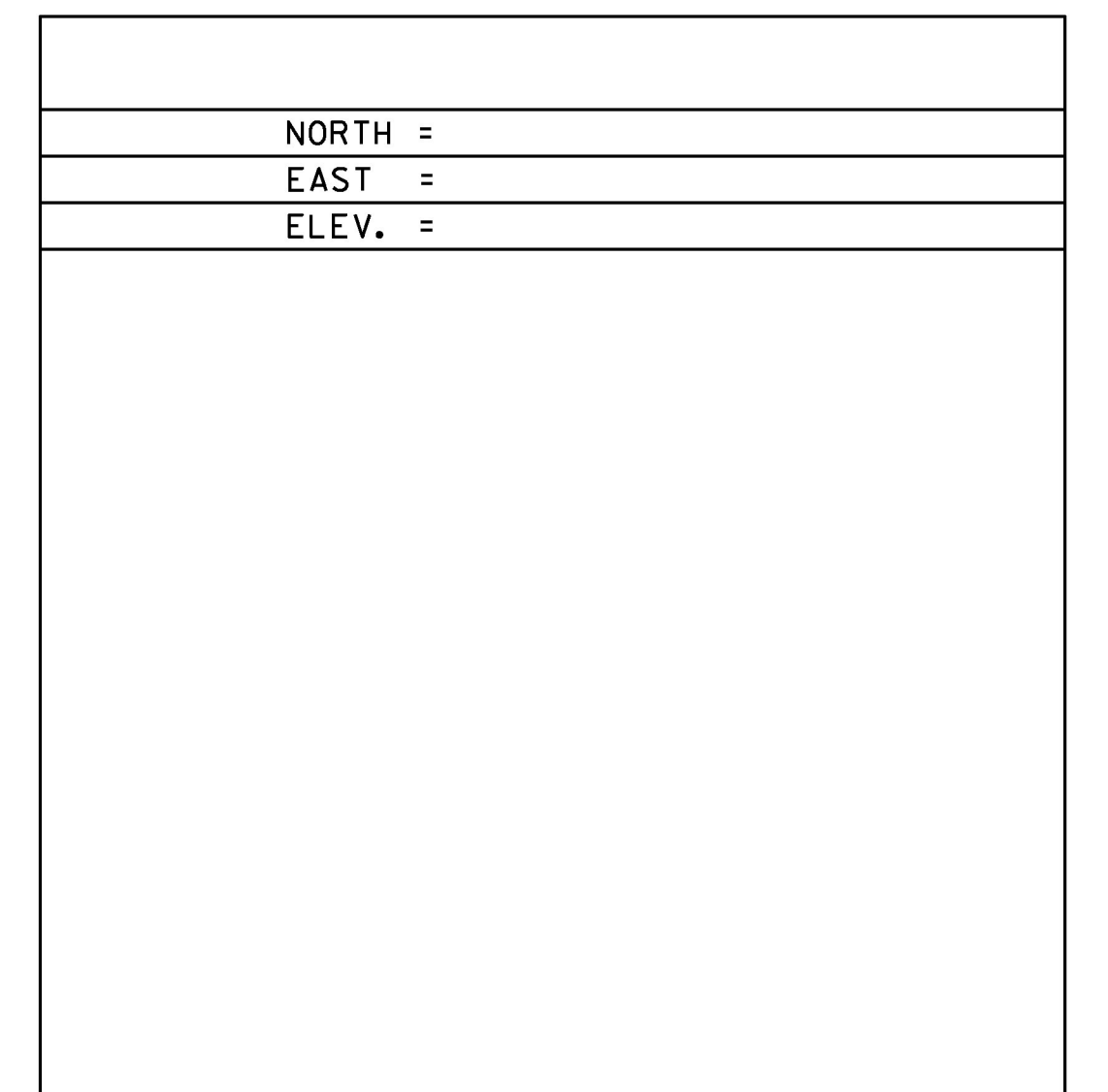
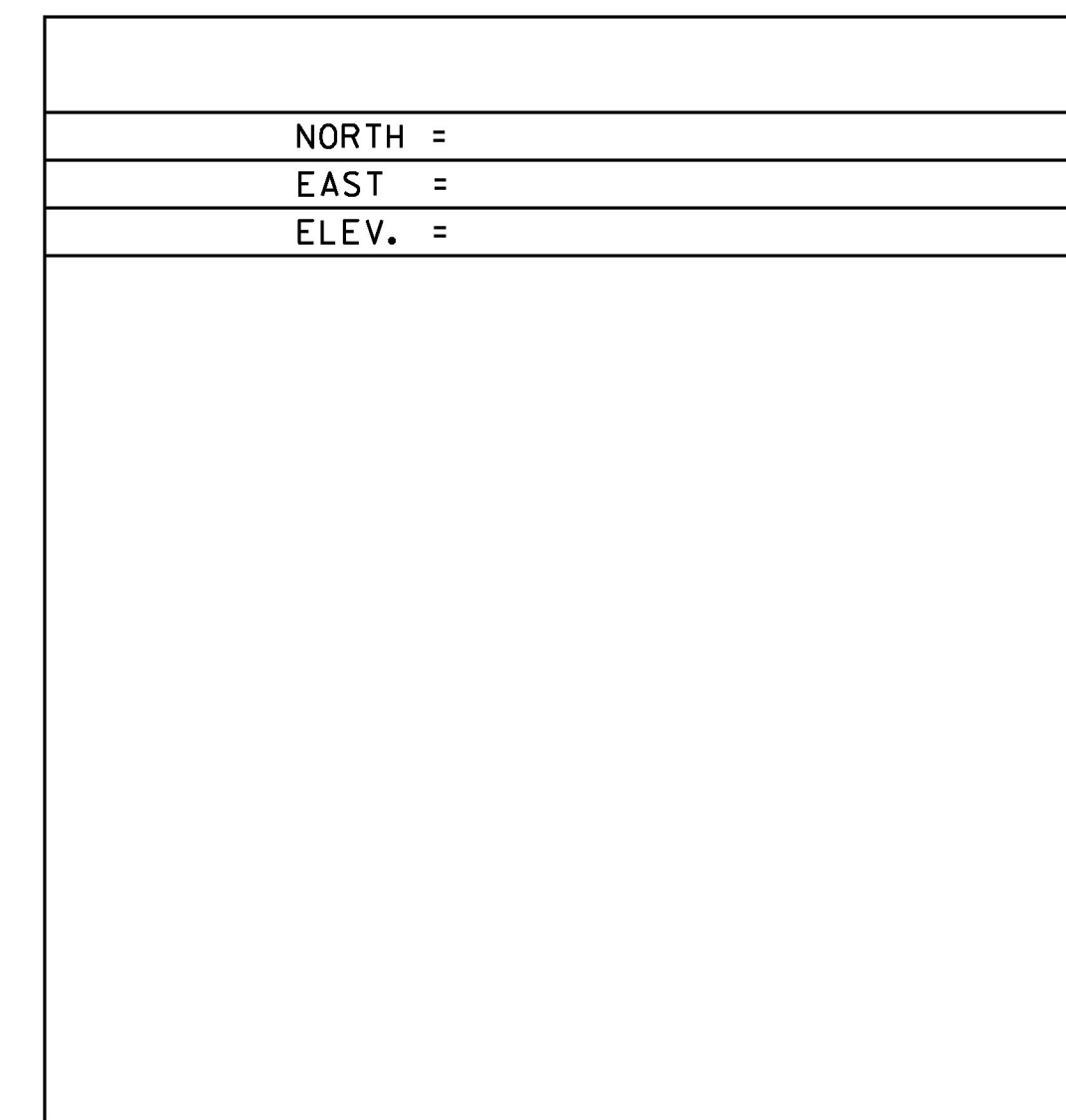
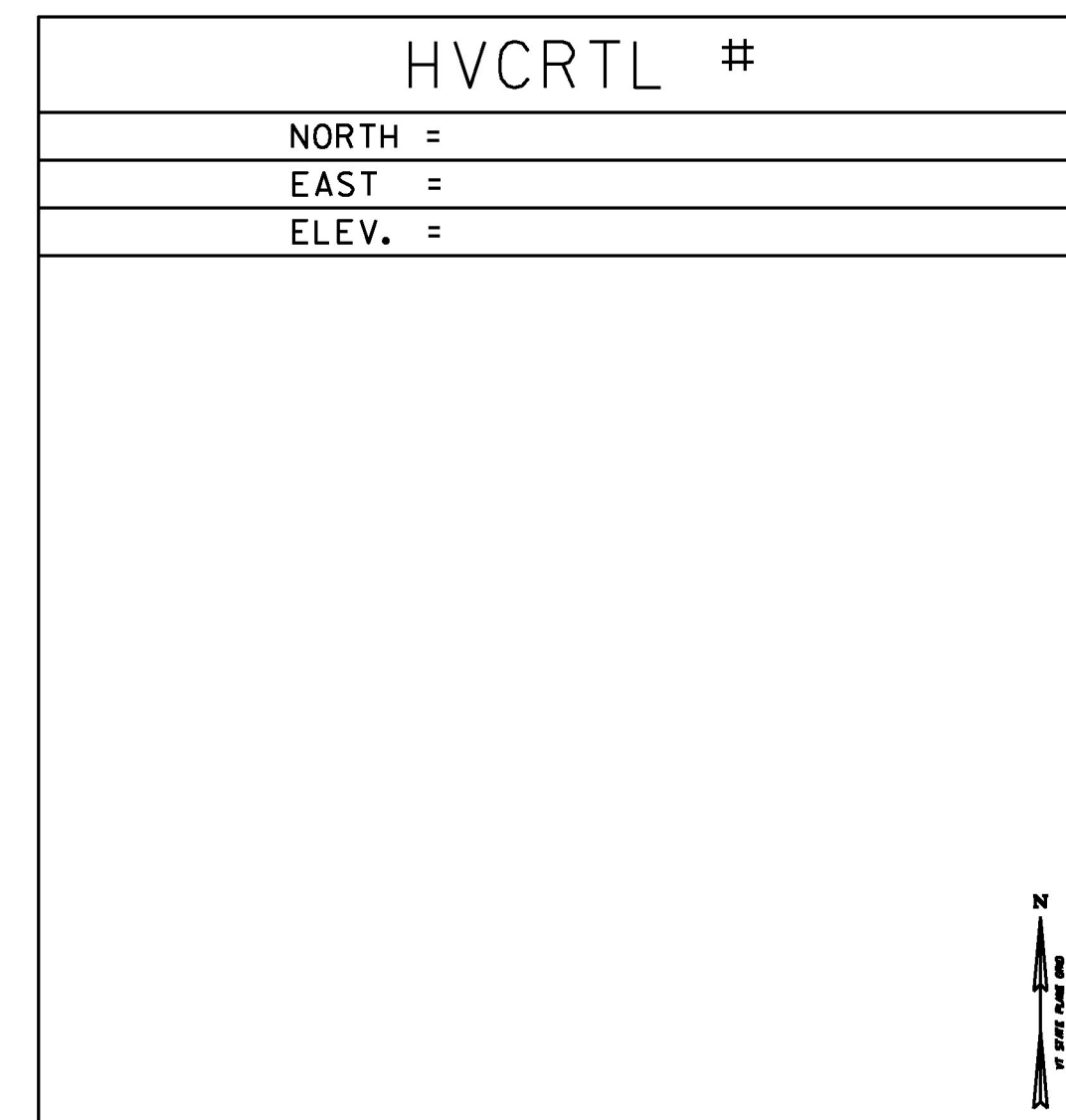
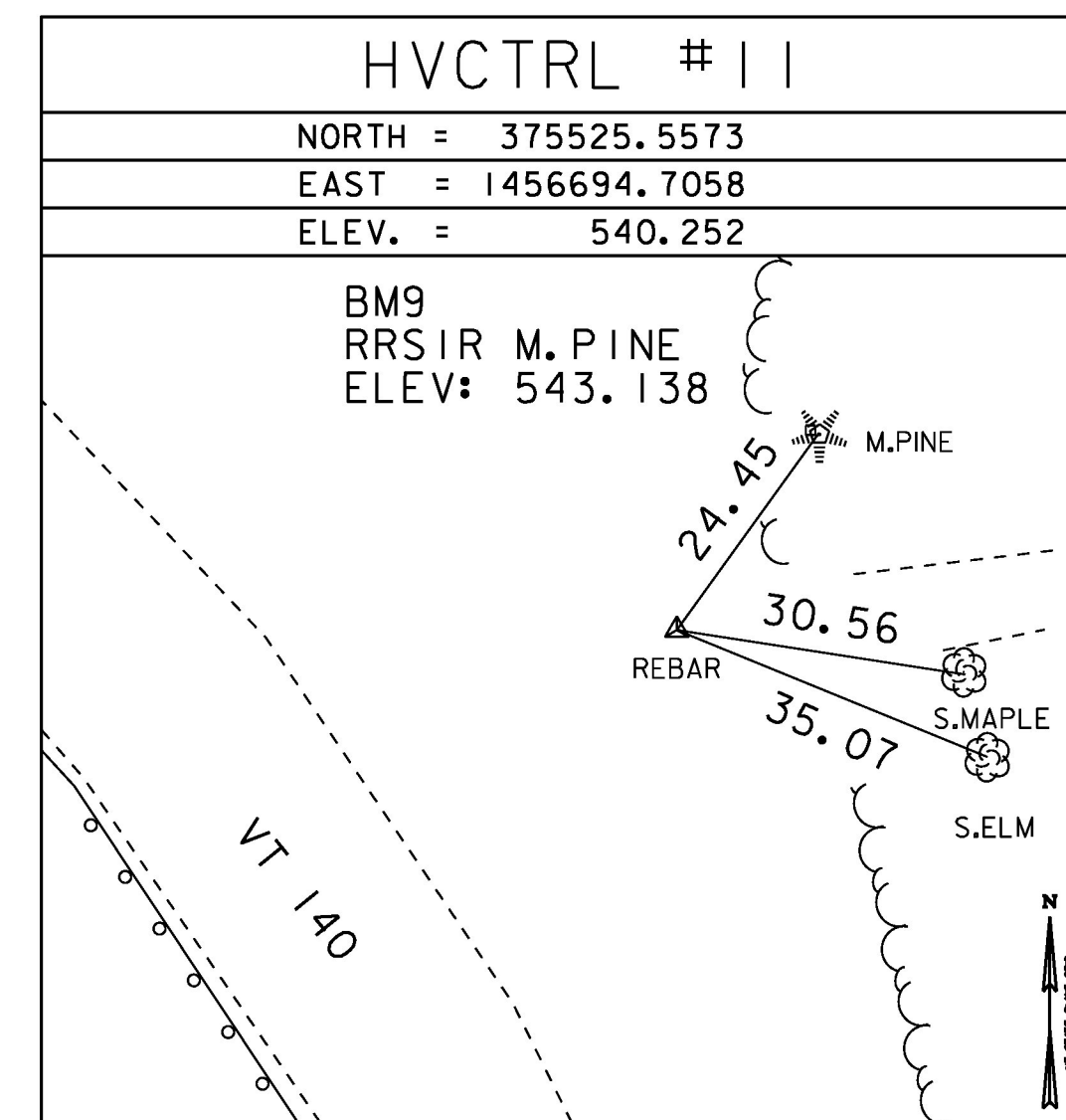
THE MARK IS SET 5 CM BELOW GROUND SURFACE IN THE TOP OF A FENO STYLE MONUMENT. IT IS 7.5 M NORTH OF AND 0.1 M LOWER THAN THE CENTERLINE OF VT ROUTE 140, 0.5 M NORTH OF THE NORTH EDGE OF A CONCRETE SIDEWALK, 5.9 M SOUTH-SOUTHWEST OF THE SECOND MOST EASTERLY SAPLING IN A ROW, 7.2 M SOUTH-SOUTHEAST OF THE THIRD MOST EASTERLY SAPLING IN THE ROW, 15.2 M NORTHWEST OF AND ACROSS THE ROAD FROM POLE NO 30 WITH LUMEN AND TRANSFORMER AND 25.5 M EAST OF THE EAST END OF A WOODEN FENCE.

*GPS CONTROL PROVIDED BY VT GSU 2014

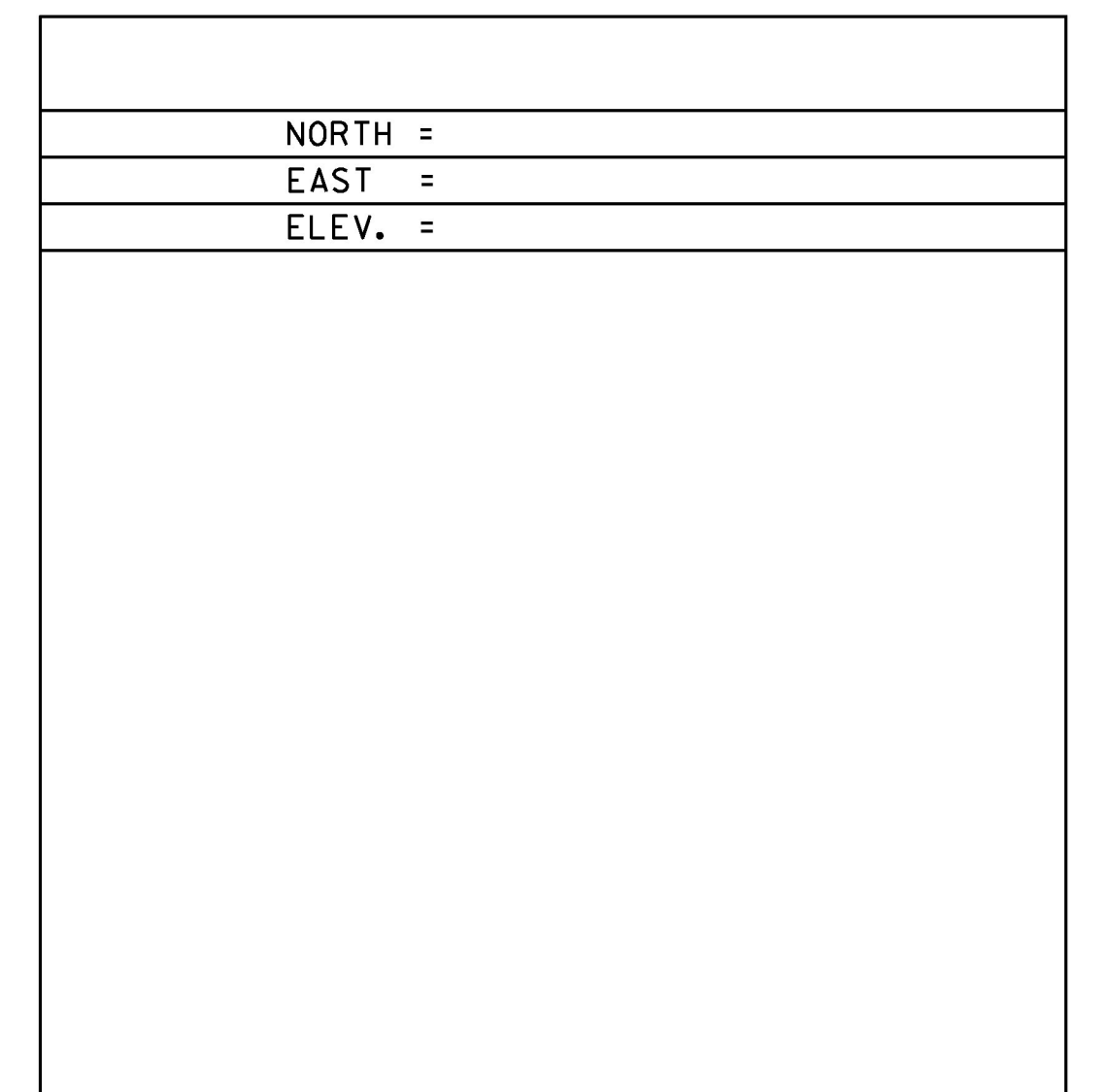
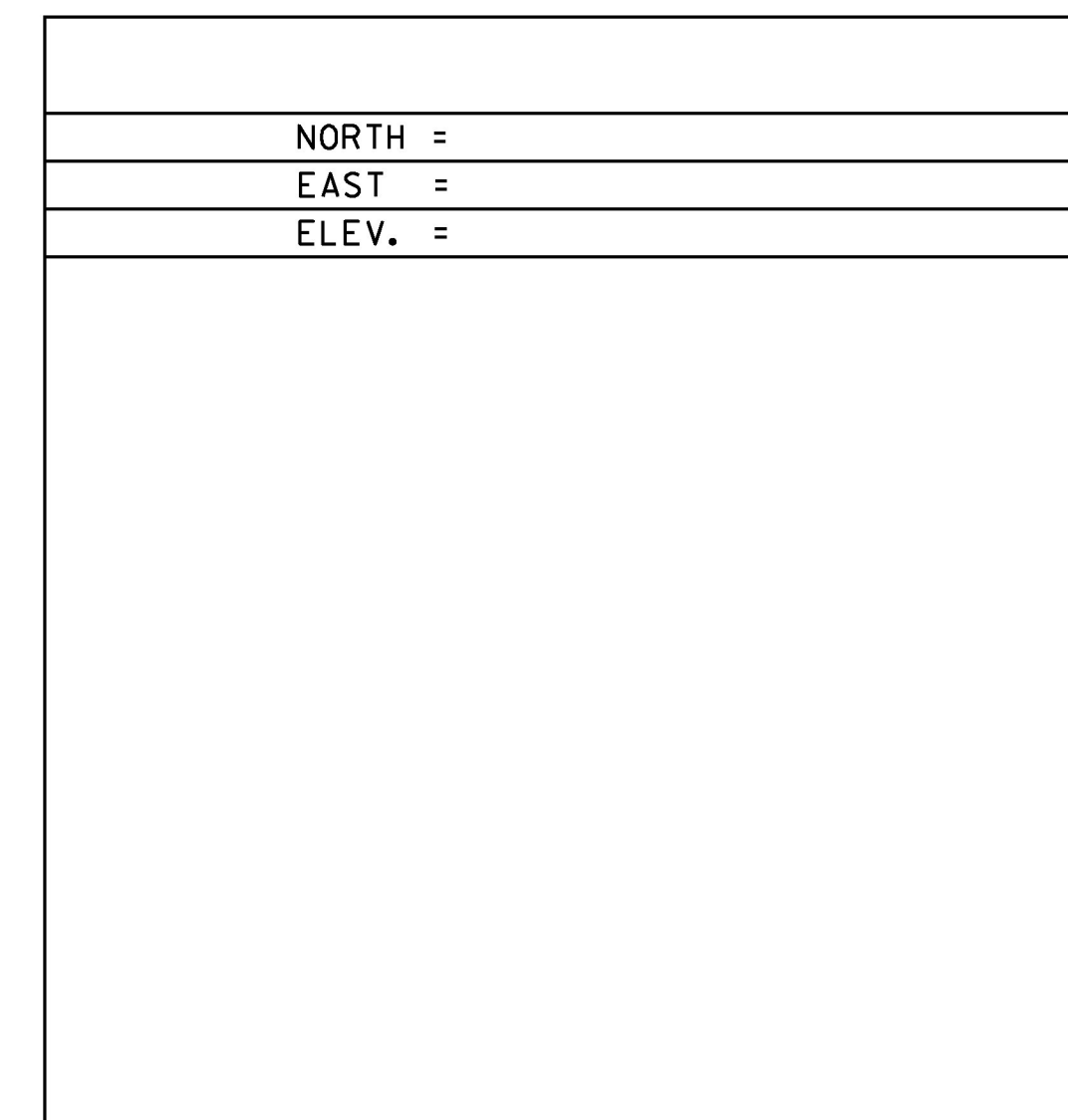
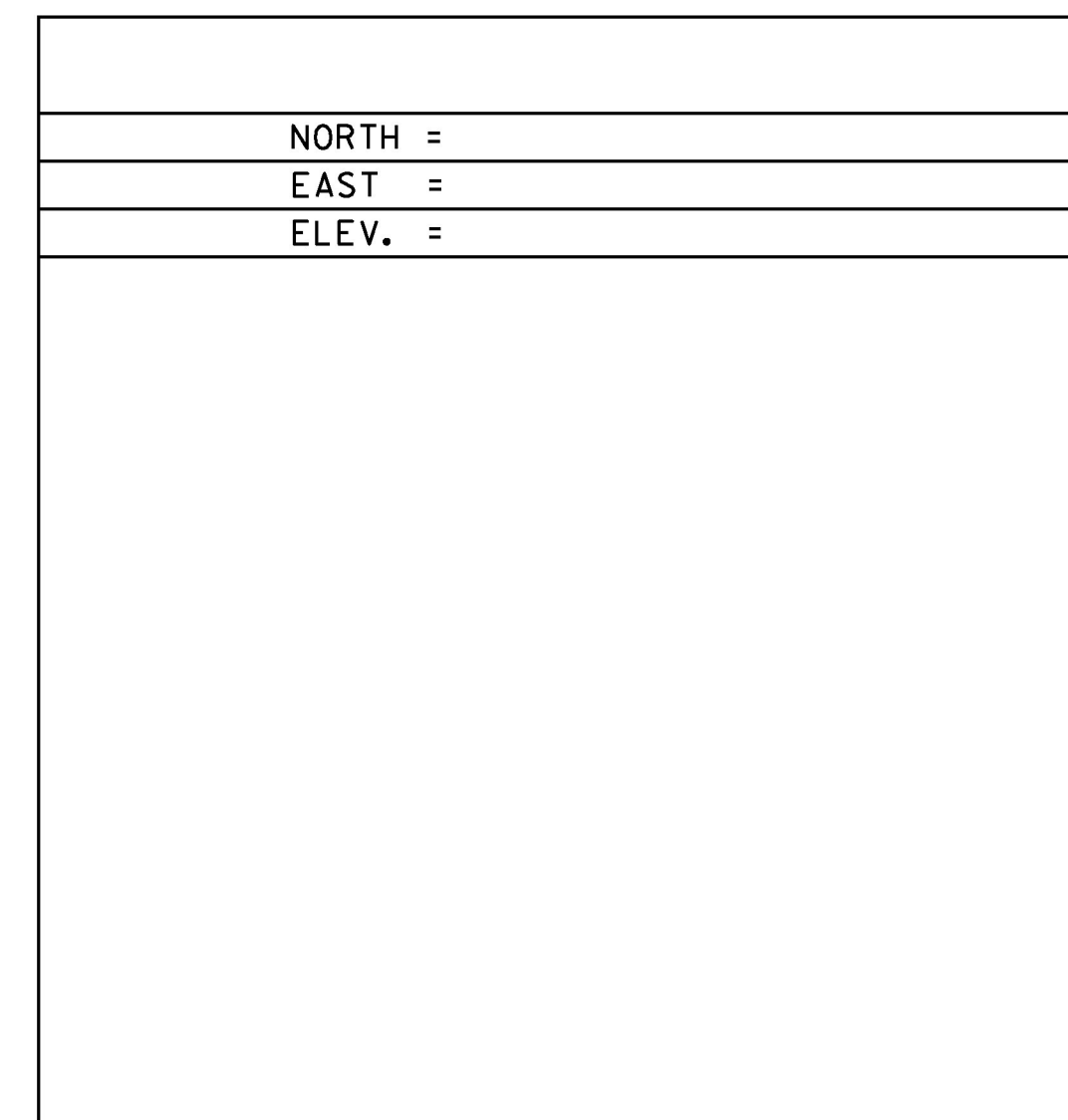
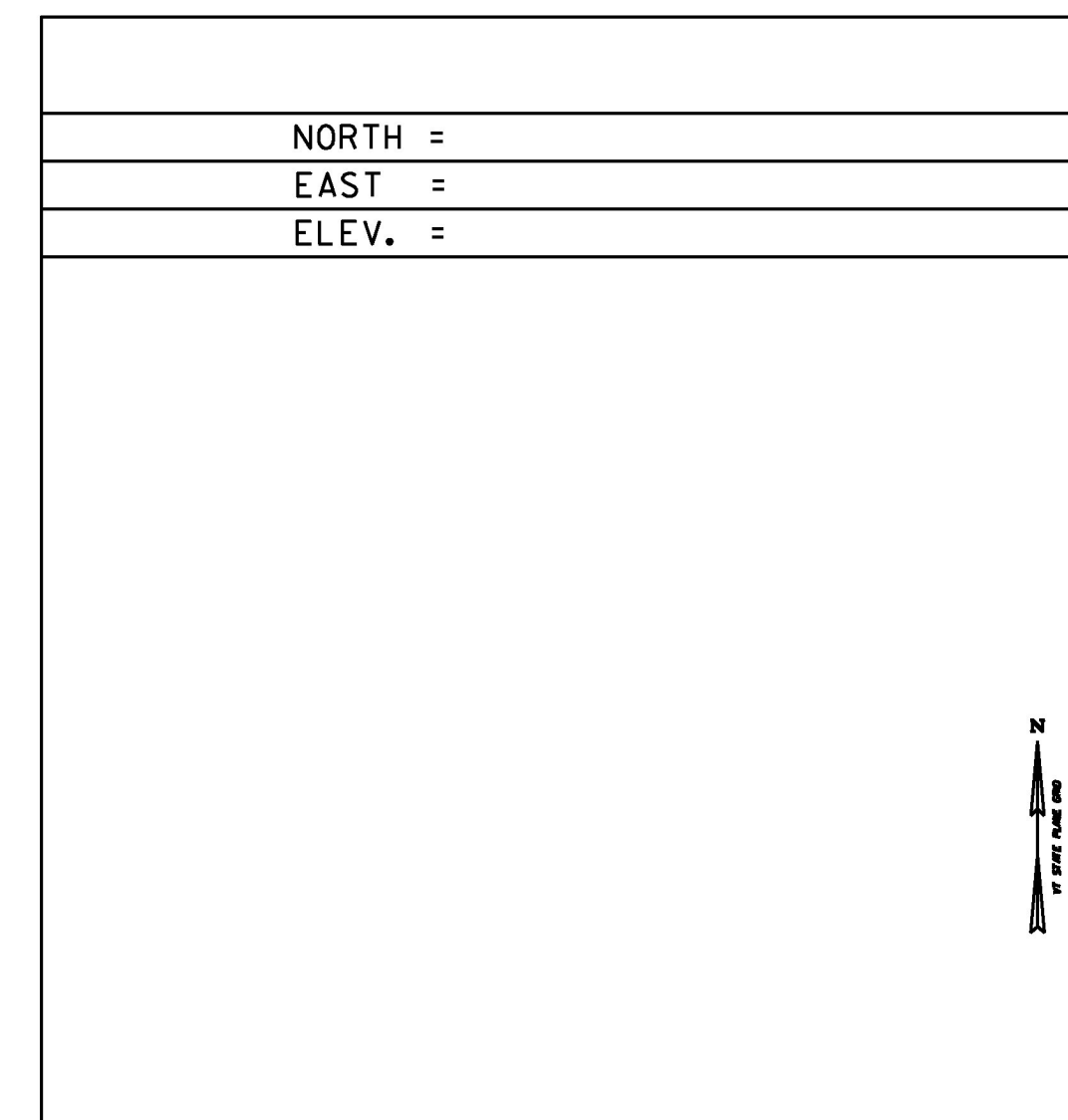
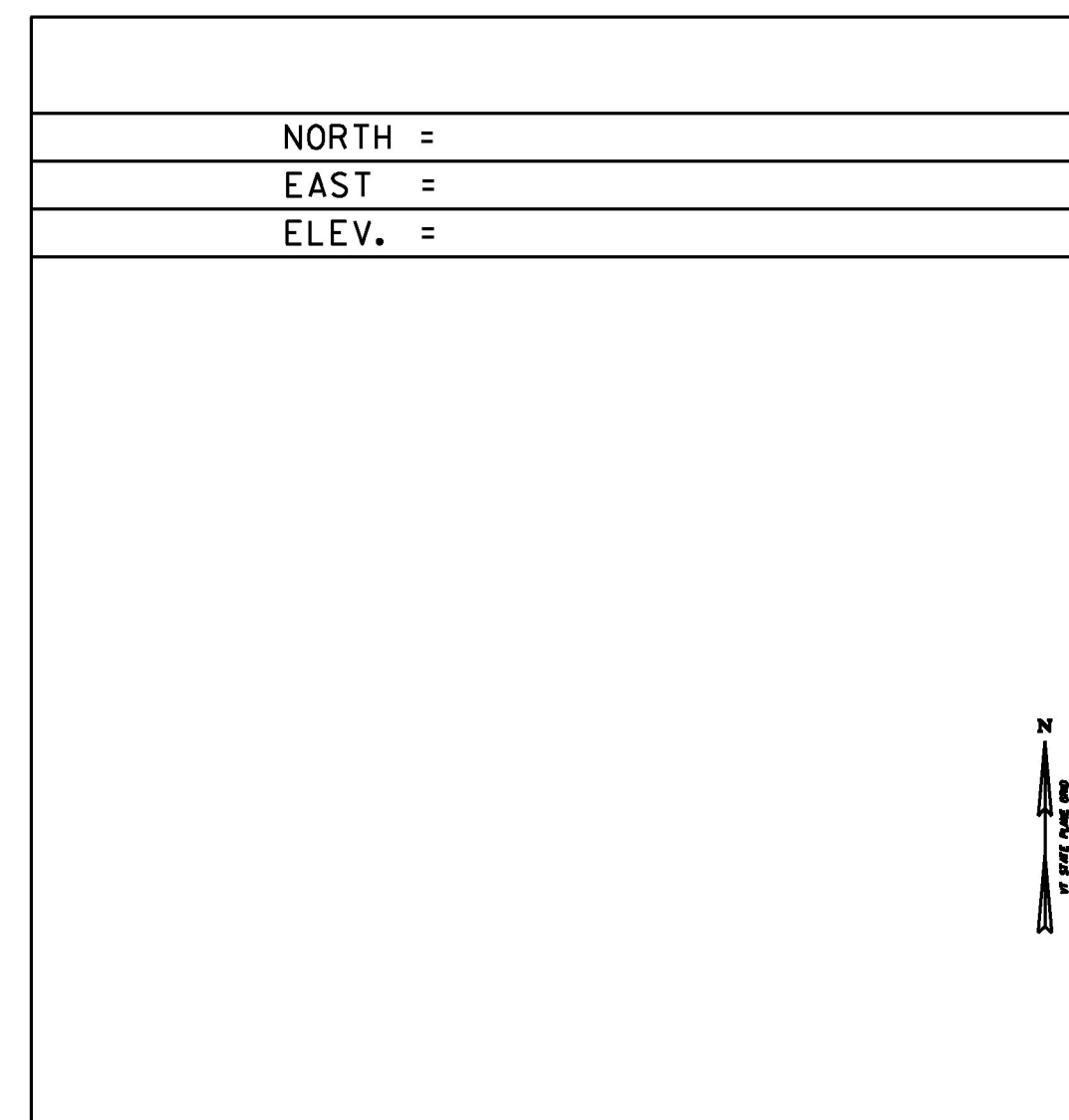
TRAVERSE TIES



*TRAVERSE COMPLETED 04/2014 BY L. ORVIS P.C. & G. HITCHCOCK, H. MCGOWAN



ALIGNMENT TIES



DATUM	
VERTICAL	NAVD 88
HORIZONTAL	NAD 83 (2011)
ADJUSTMENT	COMPASS

PROJECT NAME: POULTNEY	
PROJECT NUMBER: BF 0138 (12)	
FILE NAME: s13j276+1e.dgn	PLOT DATE: 15-AUG-2018
PROJECT LEADER: R. YOUNG	DRAWN BY: G. HITCHCOCK
DESIGNED BY: VTRANS	CHECKED BY: P. BEYOR
TIES	SHEET II OF 46