

APPROVED: Approval of drawings and/or procedures indicates concurrence with the information presented and does not relieve the Contractor or Fabricator of compliance with all specifications and code requirements

APPROVED AS NOTED

REVISE AND RESUBMIT

NOT REVIEWED

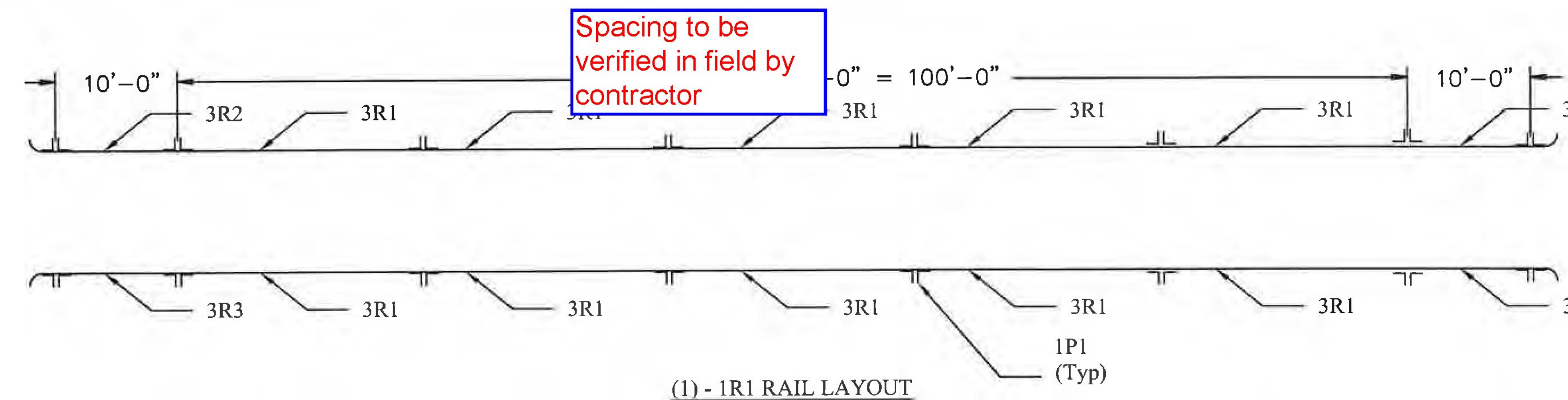
Date: 8/23/16

By: George Bogue

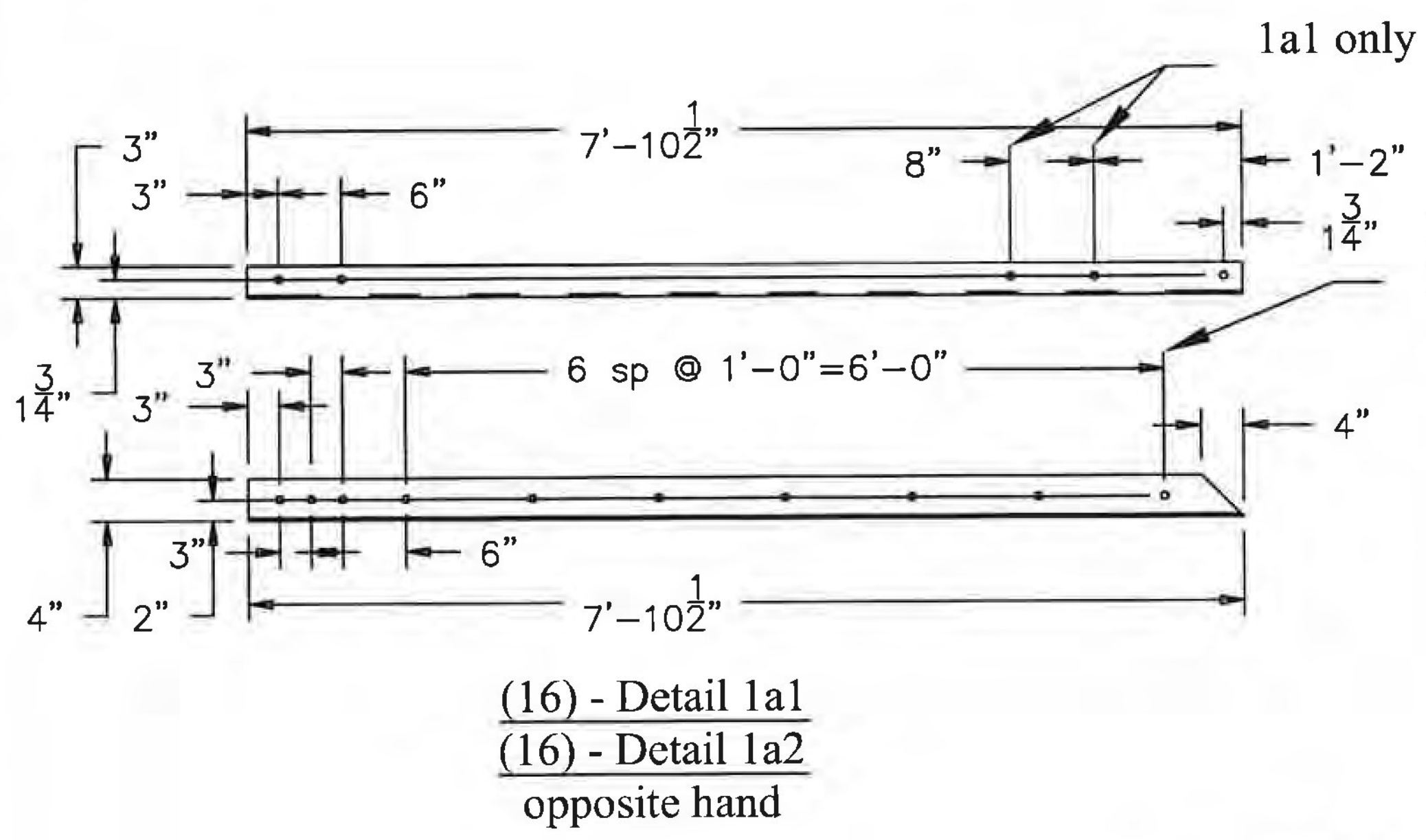
This review by Stantec Consulting Services Inc. is for the sole purpose of ascertaining conformance with the general design concept. This review shall not mean that Stantec Consulting Services Inc. approves the detail design inherent in the shop drawings, responsibility for which shall remain with the Contractor. Submitting same, and such review shall not relieve the Contractor of his responsibility for errors or omissions in the shop drawing or of his responsibility for meeting all requirements of the Contract Documents. The contractor is responsible for dimensions to be confirmed and correlated at the job site, for information that pertains solely to the fabrication processes or to techniques of construction and installation and for coordination of the work of all subtrades.



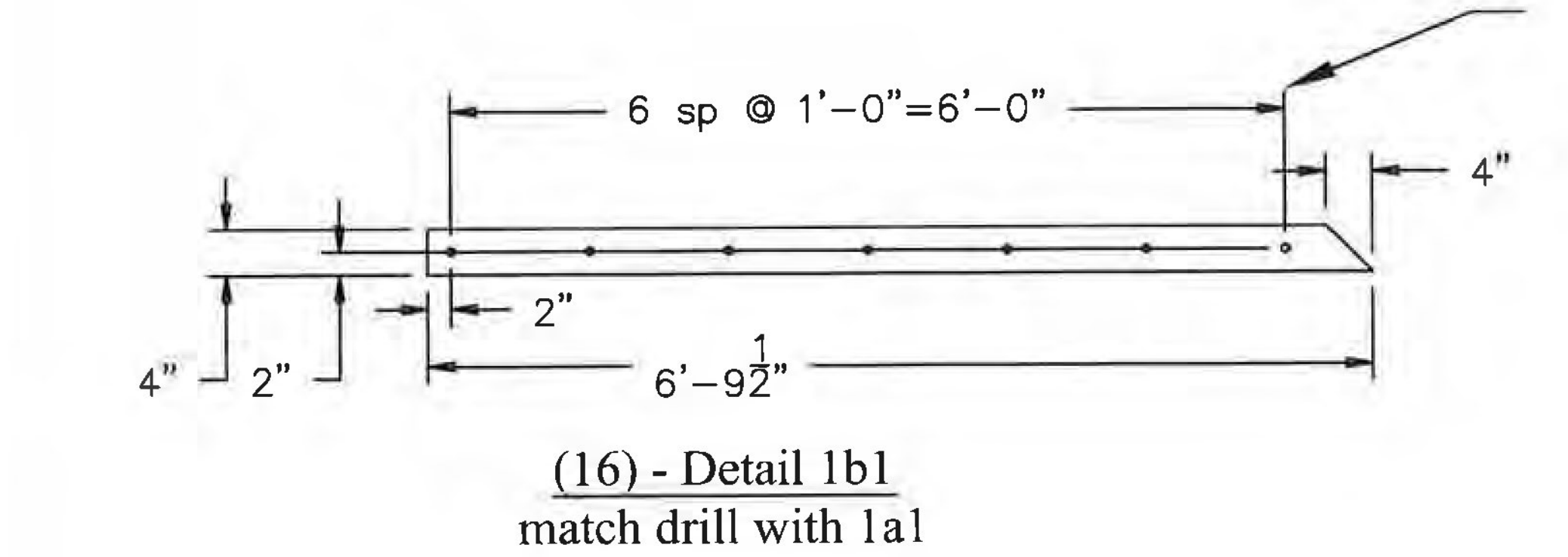
BILL OF MATERIALS				
QTY	MARK	SHAPE	LENGTH	REMARKS
1	1R1	BRIDGE RAIL ASSEMBLY		
16	1a1	L 4 x 3 x 1/4	7'-10 1/2"	
16	1a2	L 4 x 3 x 1/4	7'-10 1/2"	
16	1b1	Bar 1/4 x 4	6'-9 1/2"	
16	2w1	W6 x 9	1'-2"	
16	2a4	L 3 1/2 x 3 x 1/4	0'-8"	
16	2A1	ANCHOR ASSEMBLY		
14	2B1	BASE ASSEMBLY		
2	2B2	BASE ASSEMBLY		
10	3R1	BRIDGE RAIL		
2	3R2	BRIDGE RAIL		
2	3R3	BRIDGE RAIL		
96		5/8" Hex Head Bolt x 1 1/2" lg with Nut and Washer		
240		5/8" Hex Head Bolt x 1 1/2" lg with Nut and Washer		



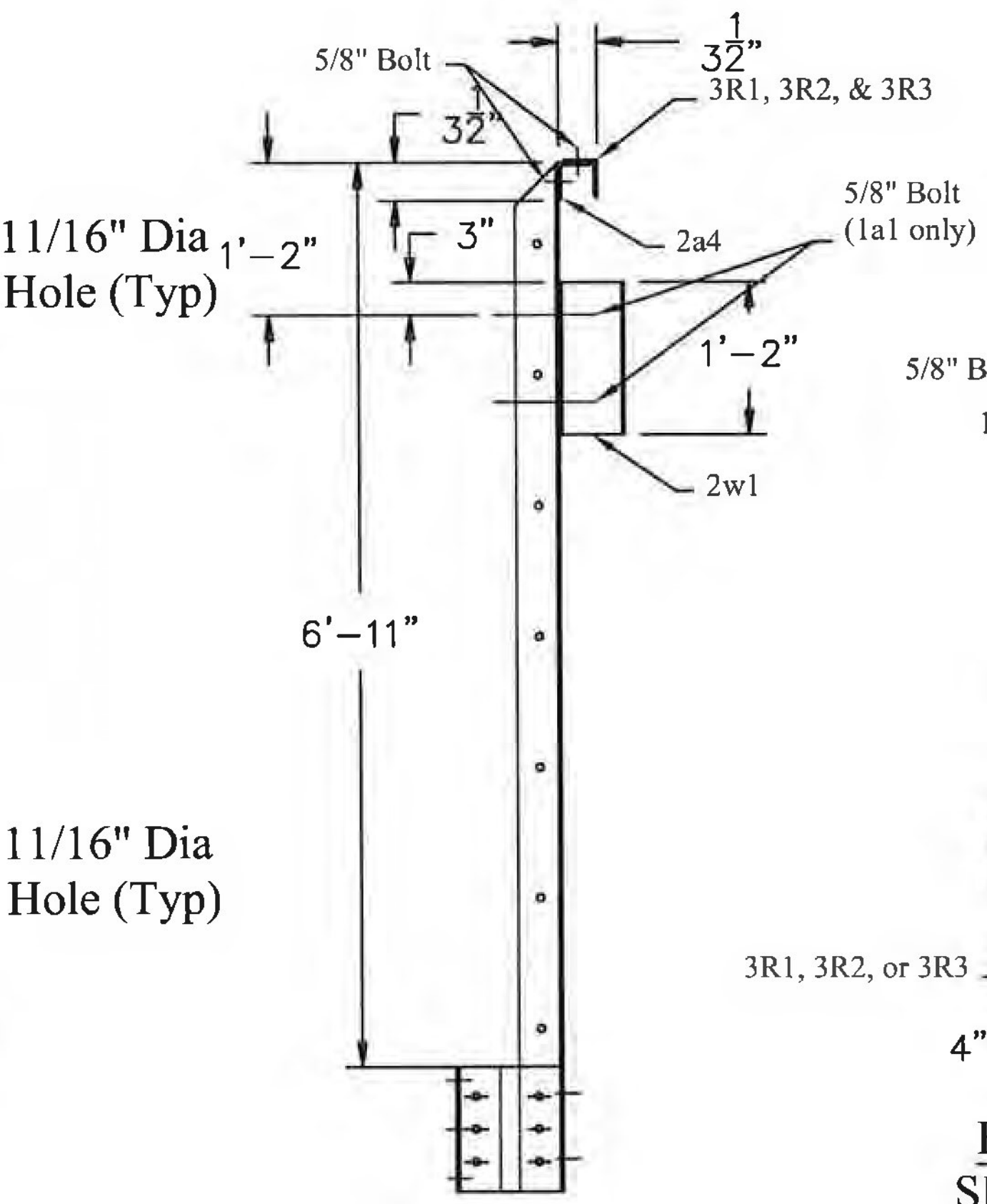
Vermont Agency of Transportation
RECEIVED
 ON: September 13, 2016
 and Checked for
CONFORMANCE
 BY: Mark Sargent DATE: 09/13/2016



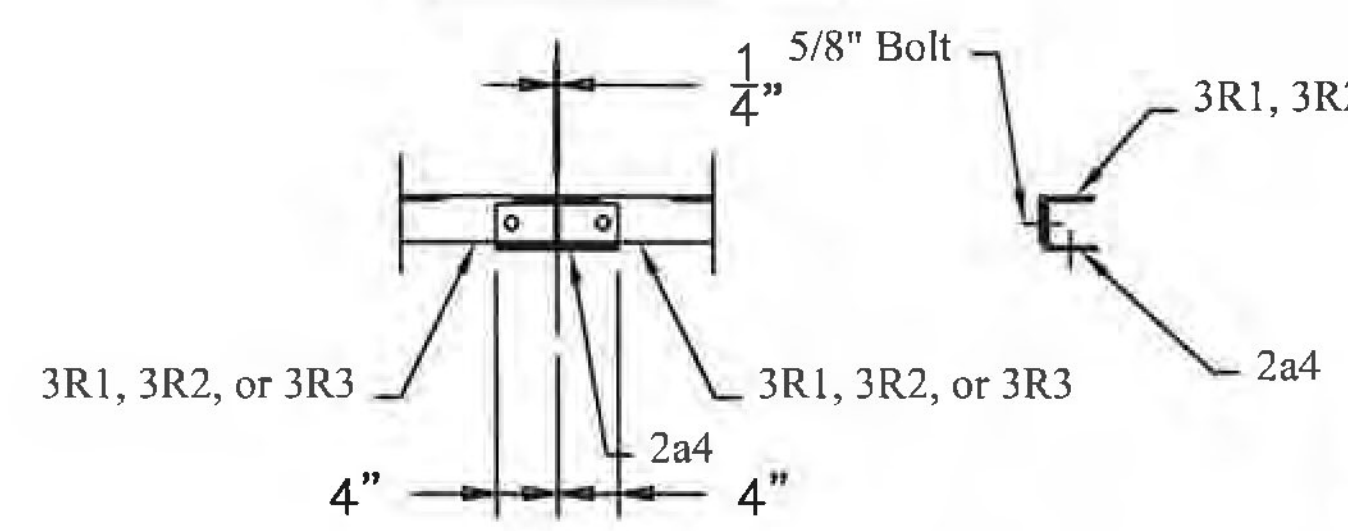
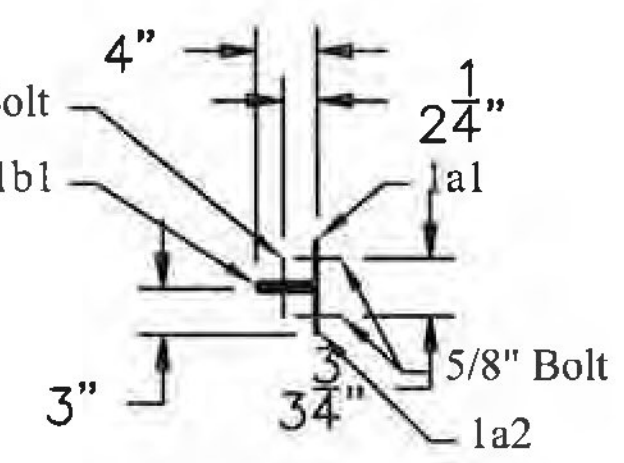
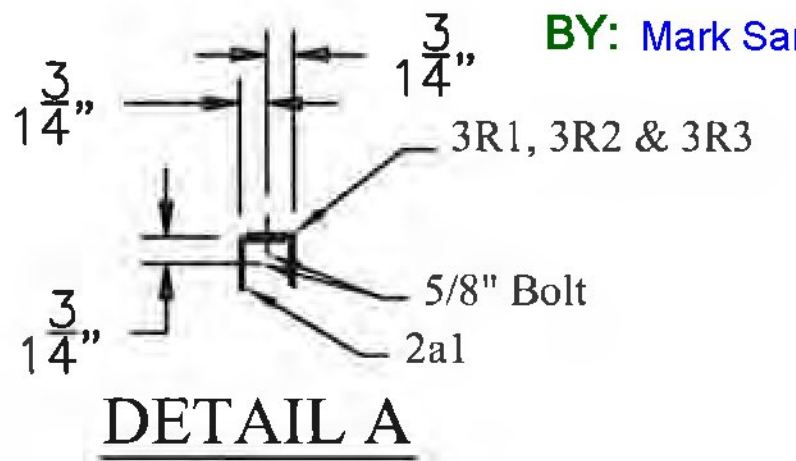
(16) - Detail 1a1
 (16) - Detail 1a2
 opposite hand



(16) - Detail 1b1
 match drill with 1a1



(16) - POST ASSEMBLY



BRIDGE RAIL
 SPLICE DETAIL

BRIDGE RAIL NOTES

- ALL STRUCTURAL STEEL SHALL CONFORM TO AASHTO M 270/M 270 GRADE 36, PRIMED, SHERMAN WILLIAMS - ZINC CLAD III. BLAST CLEAN PER SSPC-SP10.
- REPLACEMENT OF BRIDGE RAIL POSTS WILL BE PAID UNDER ITEM 506.60.
- ALL HIGH STRENGTH 7/8" HEX HEAD BOLTS, NUTS AND WASHERS SHALL BE IN ACCORDANCE WITH AASHTO M-164 TYPE 1 GALVANIZED

REV NO.	DATE	DESCRIPTION
0	8-10-2016	SUBMITTED FOR APPROVAL
HOLES AS NOTED		
MATERIAL: AASHTO M 270 GRADE 36 PAINTED		

DRAWING COVERS	
PROJECT	MORRISTOWN BF 0239(3)
LOCATION	CADYS FALLS ROAD over LAMOILLE RIVER
ENGINEER	VERMONT AGENCY OF TRANSPORTATION
CUSTOMER	BLOW & COTE, INC.

MERRIMACK SHEET METAL

119 HALL STREET
 CONCORD NH 03301

Tel. 603.224.7766
 Fax 603.224.7925

DRAWN BY: RL
 CHECKED BY: JD
 JOB NO: #6669
 DWG: F1R