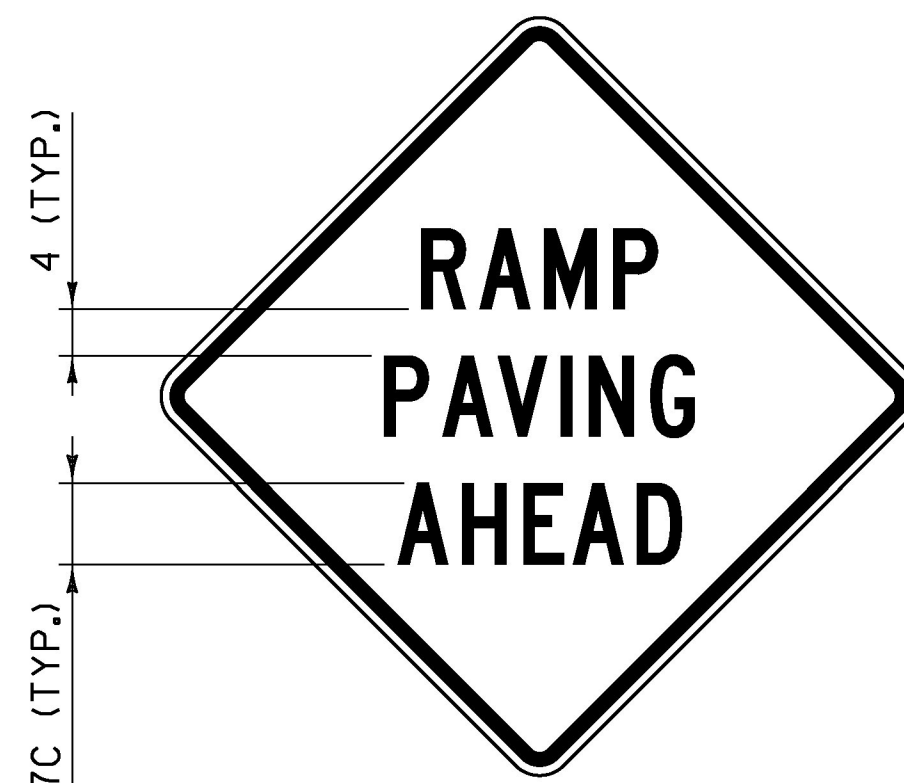
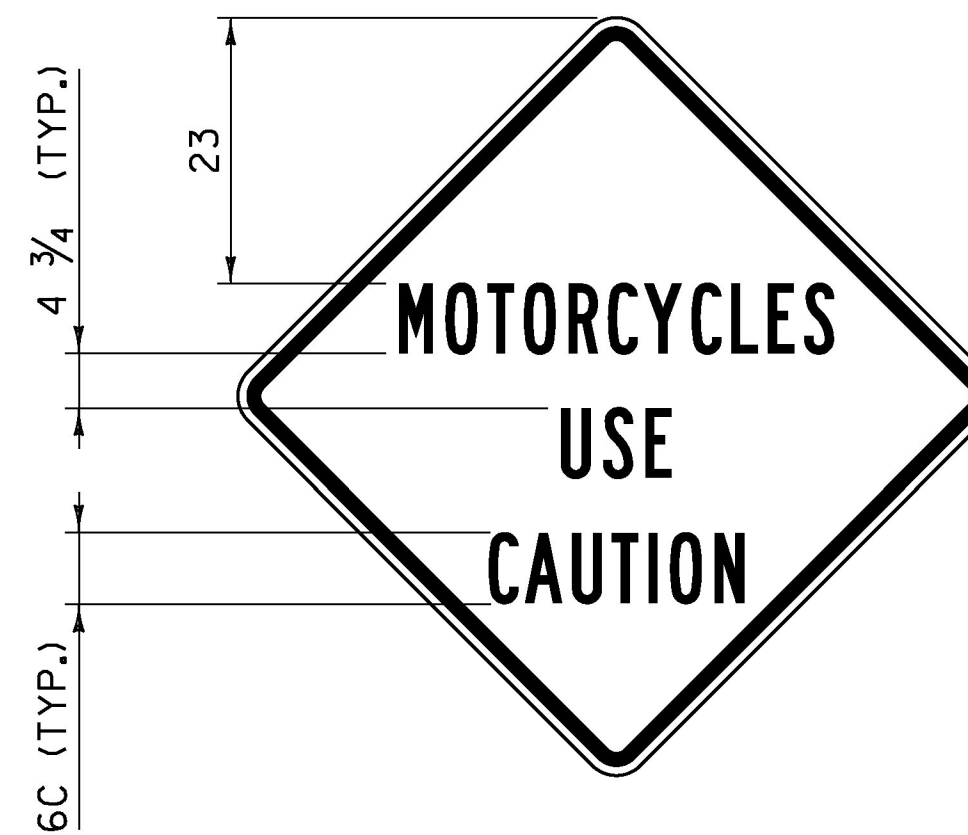


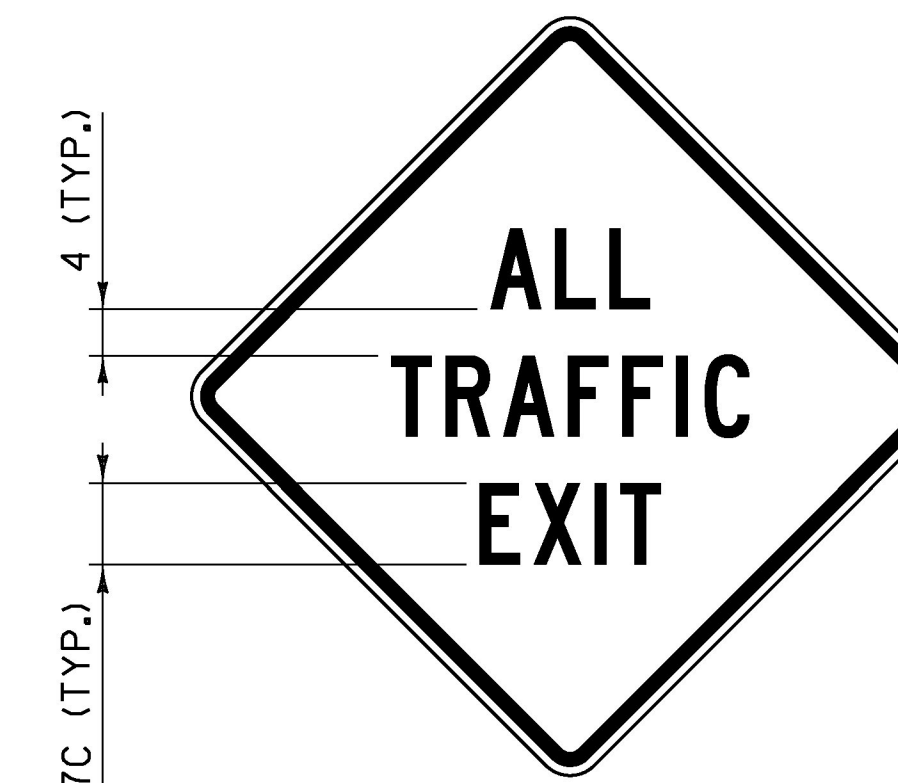
VC-001



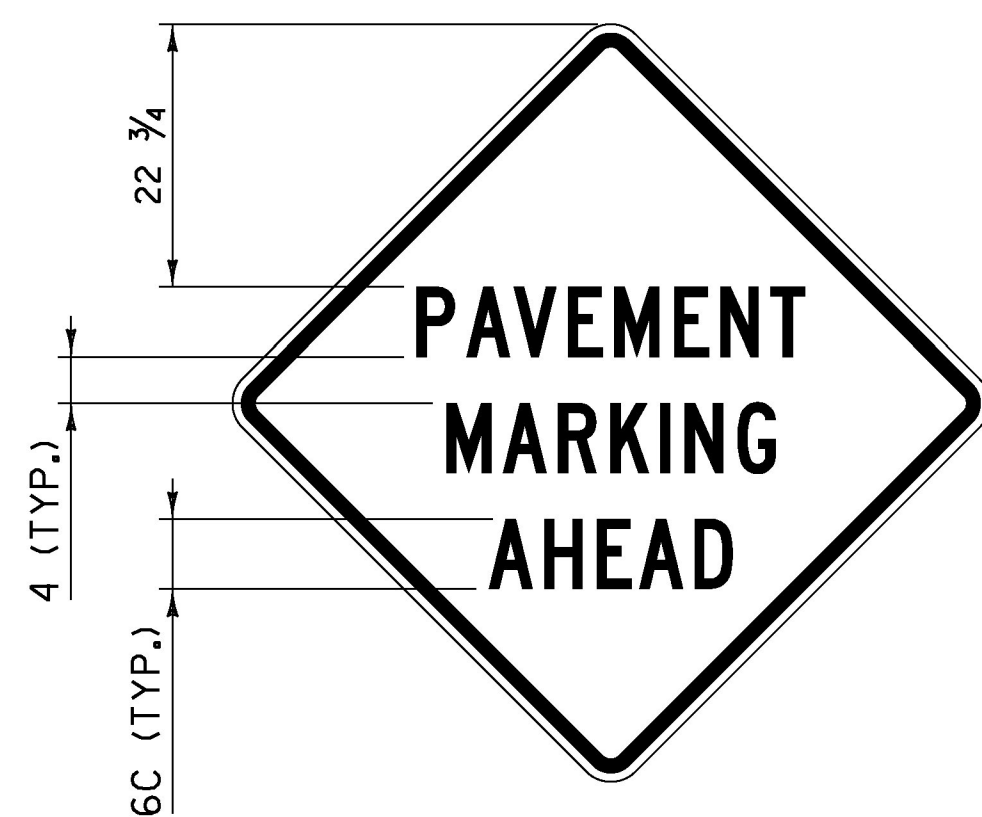
VC-003



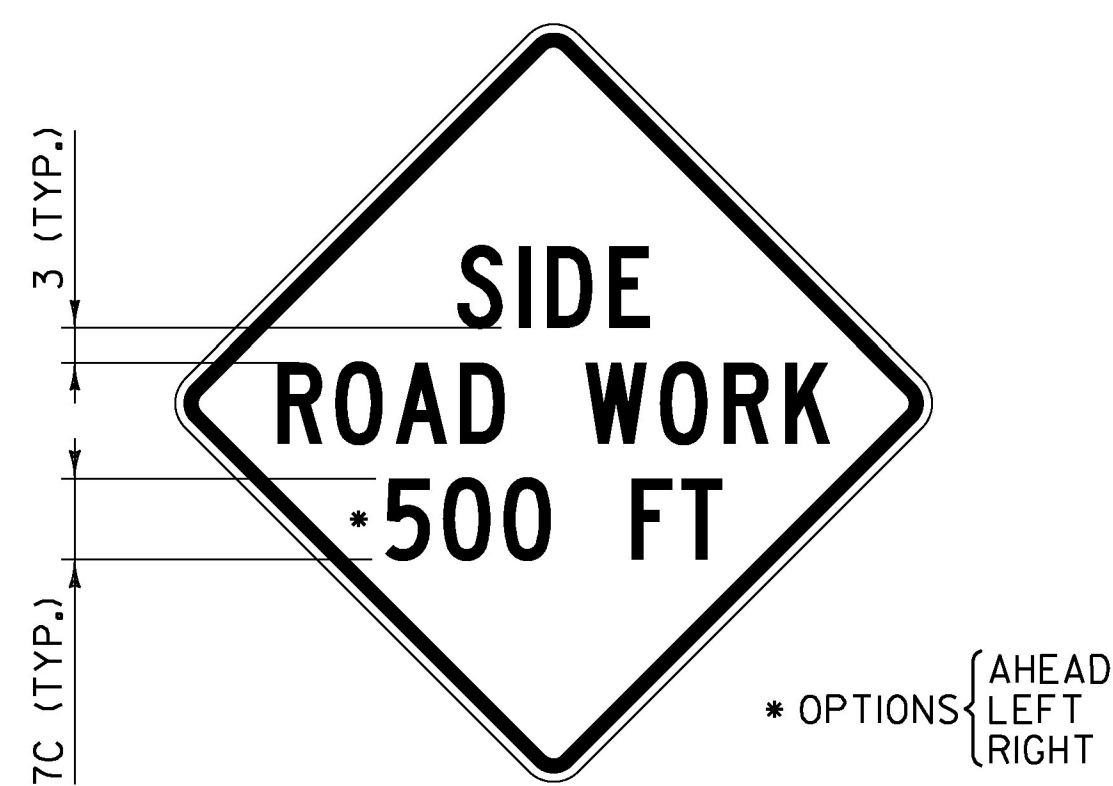
VC-004



VC-008



VC-813



VC-869



VC-874

GENERAL NOTES:

1. COLORS FOR SIGNS SHALL BE BLACK LEGEND AND BORDER ON FLUORESCENT ORANGE BACKGROUND.
2. CONSTRUCTION SIGNS SHALL BE 48 INCH BY 48 INCH. IF SOLID SUBSTRATE SIGNS ARE USED, SIGNS SHALL HAVE CORNERS ROUNDED TO A THREE INCH RADIUS.
3. SIGNS SHALL HAVE 1 1/4 INCH WIDE BORDERS THAT ARE INDENTED 3/4 INCH FROM THE EDGE OF THE SIGN.
4. SIGNS SHALL HAVE THE LEGEND CENTERED HORIZONTALLY AND VERTICALLY ON THE SIGN UNLESS OTHERWISE INDICATED.
5. ALL DIMENSIONS SHOWN IN INCHES.

OTHER STDS. REQUIRED: T-1

REVISIONS AND CORRECTIONS
AUG. 6, 2012 - ORIGINAL APPROVAL DATE

APPROVED
W.A.G. Pl.
HIGHWAY SAFETY & DESIGN ENGINEER
Ruben Fleuret
DIRECTOR OF PROGRAM DEVELOPMENT
Mark D. Richter
FEDERAL HIGHWAY ADMINISTRATION

CONSTRUCTION SIGN
DETAILS



STANDARD
T-28