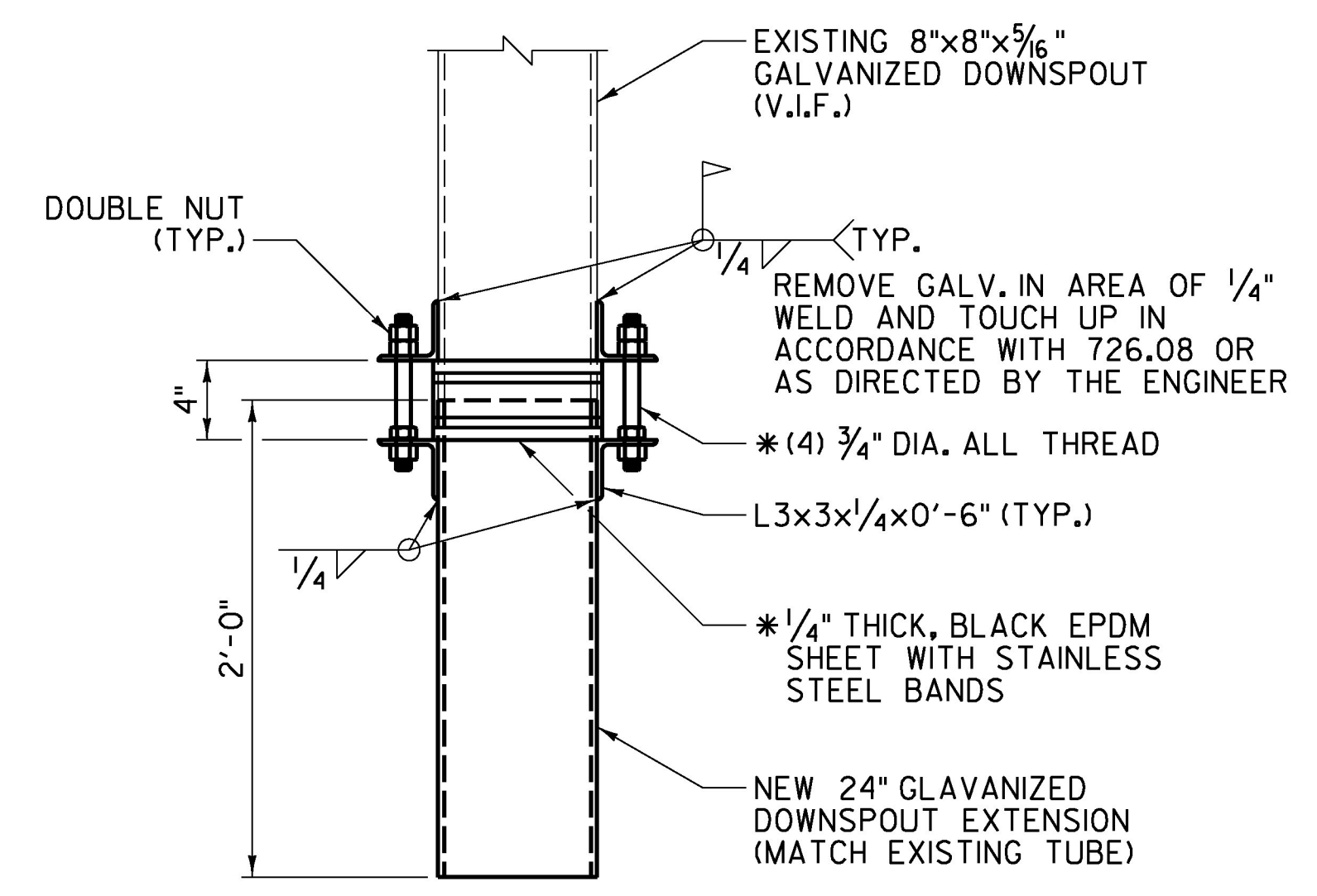
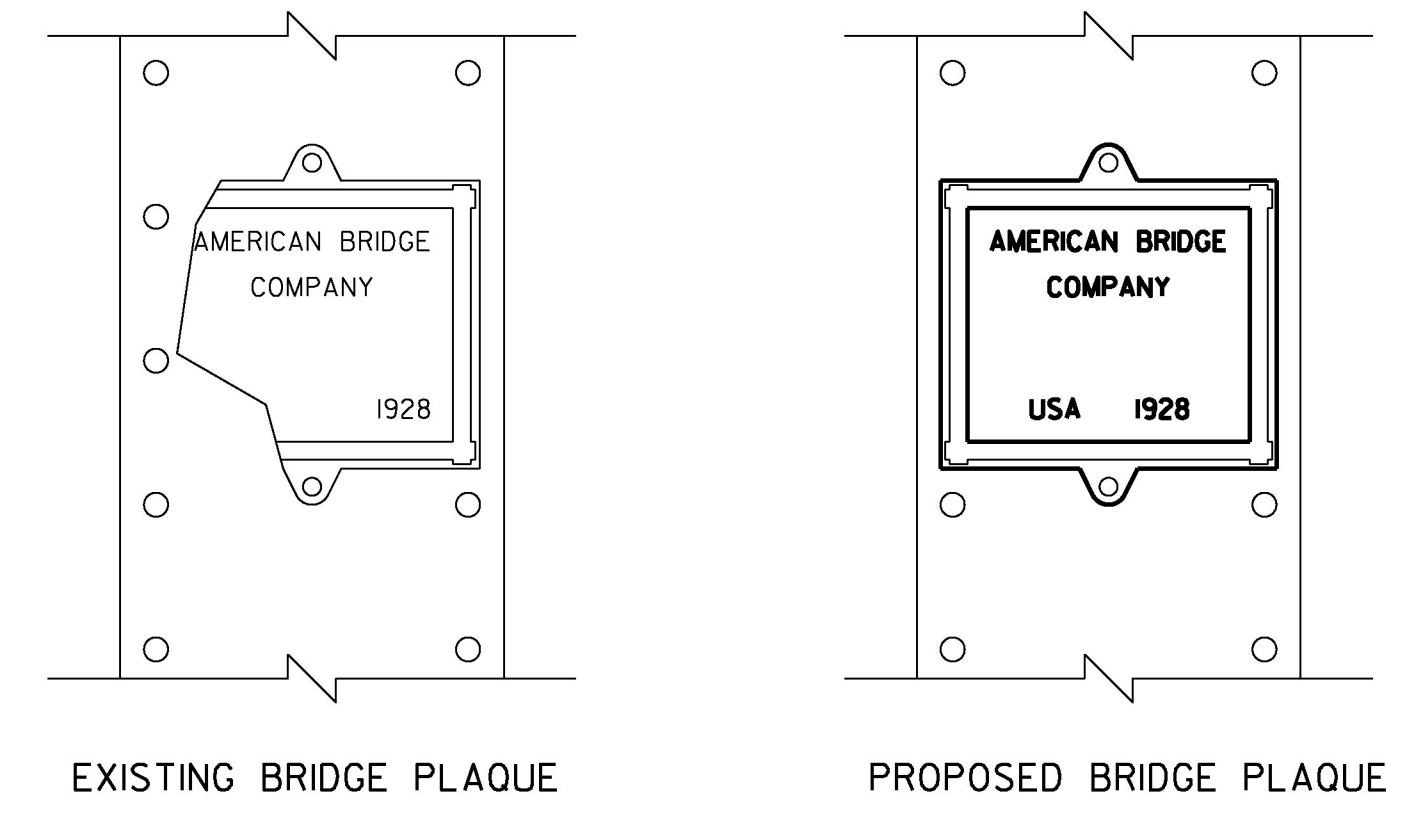


DETAIL A
 REPLACE END COVER PLATE
 SCALE: 1" = 1'-0"



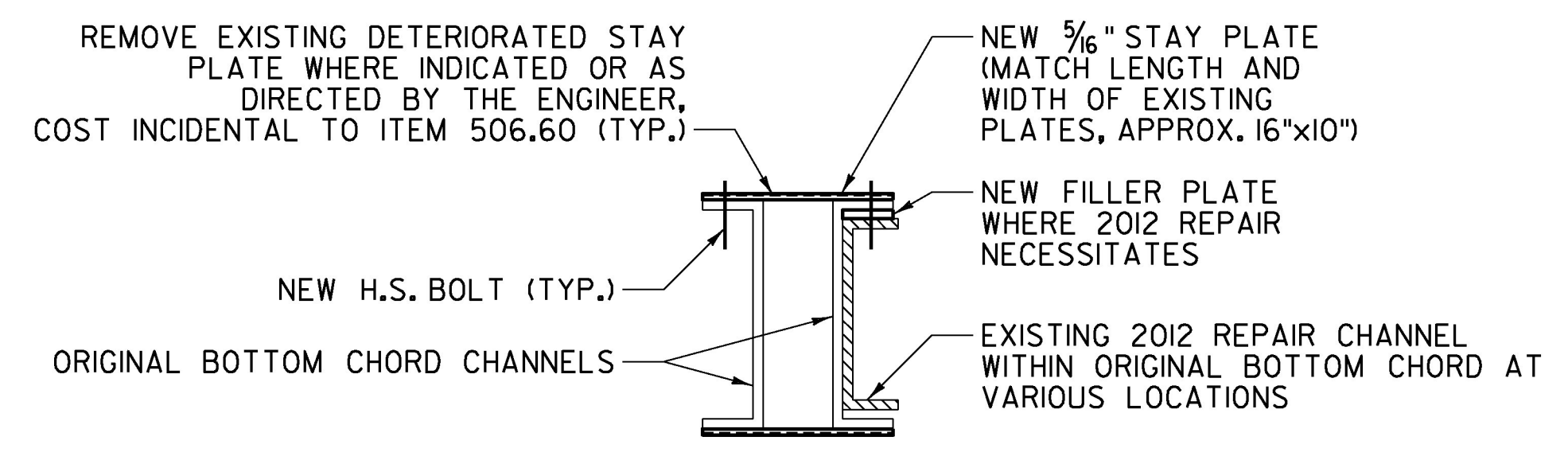
DETAIL D
 SCUPPER EXTENSION DETAIL
 SCALE: 1/2" = 1'-0"

*INCIDENTAL TO ITEM 506.60

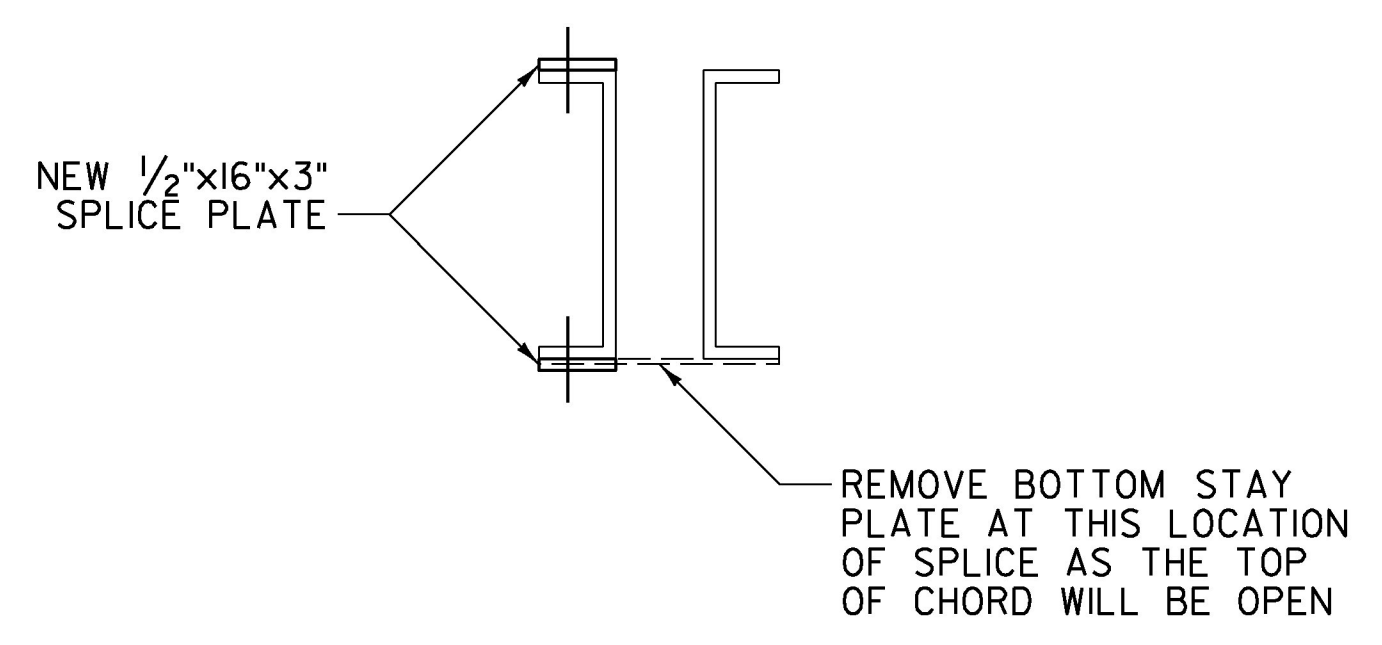


NOTE: REPLACE EXISTING BRIDGE PLAQUE WITH NEW BRONZE PLAQUE. REFER TO SPECIAL PROVISION (BRIDGE PLAQUE, CAST BRONZE)

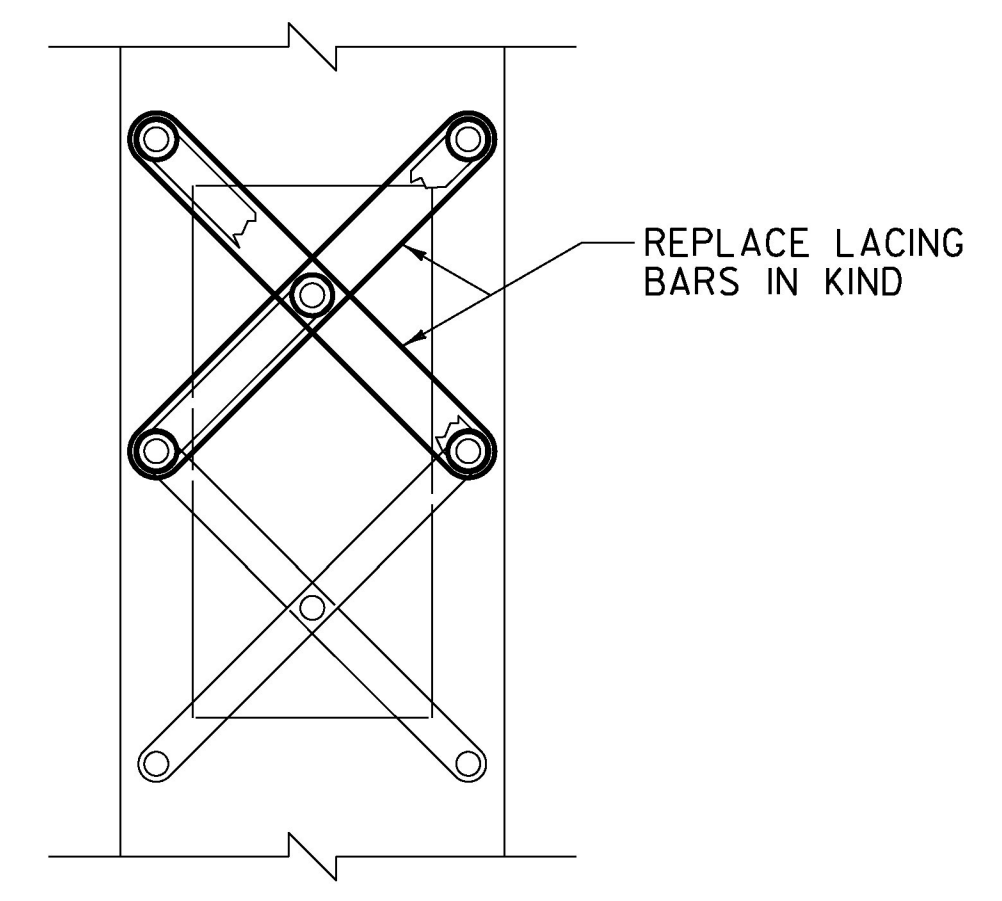
DETAIL F
 NOT TO SCALE



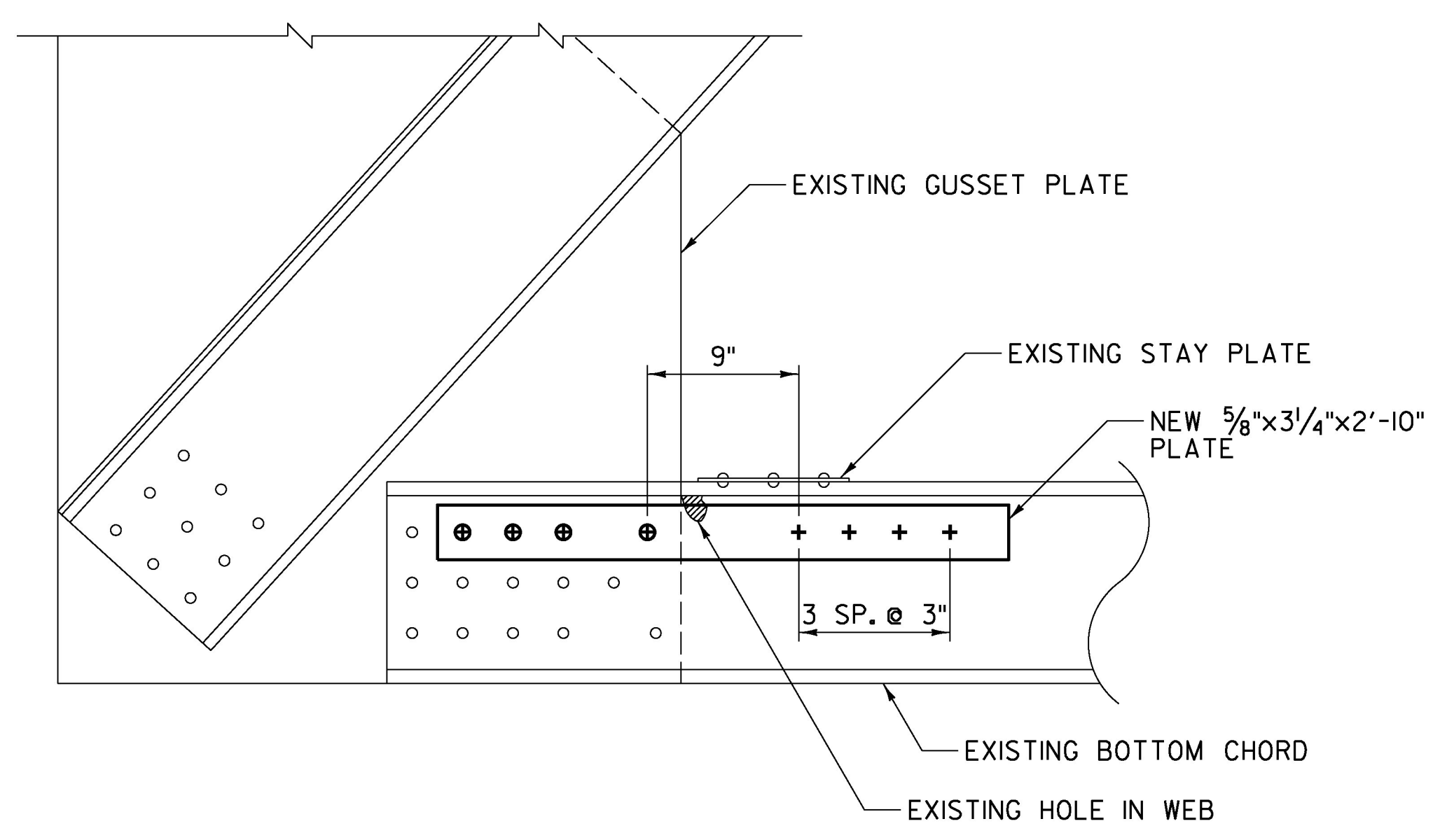
DETAIL B
 BOTTOM CHORD REPAIRS (VARIOUS LOCATIONS)
 SCALE: 1/2" = 1'-0"



DETAIL E
 BOTTOM CHORD REPAIRS (VARIOUS LOCATIONS)
 SCALE: 1/2" = 1'-0"



DETAIL G
 NOT TO SCALE



DETAIL C
 BOTTOM CHORD REPAIR
 SCALE: 1/2" = 1'-0"

- ⊕ REPLACE EXISTING RIVET WITH H.S. BOLT (MATCH DRILL IN FIELD)
- + NEW 7/8" DIA. H.S. BOLT
- EXISTING RIVET TO REMAIN



PROJECT NAME:	MORRISTOWN	PLOT DATE:	3/3/2016
PROJECT NUMBER:	BF 0239(3)	DRAWN BY:	J. SOTER
FILE NAME:	z13j274typ.dgn	DESIGNED BY:	T. KNIGHT
PROJECT LEADER:	T. KNIGHT	CHECKED BY:	G. BOGUE
REPAIR DETAILS		SHEET	7 OF 9