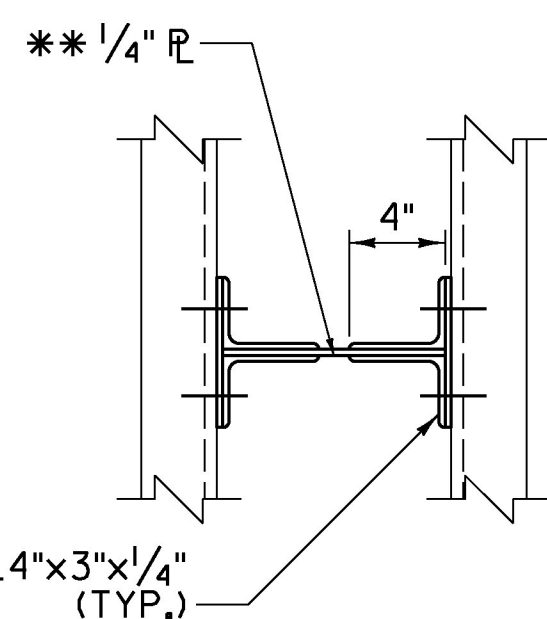


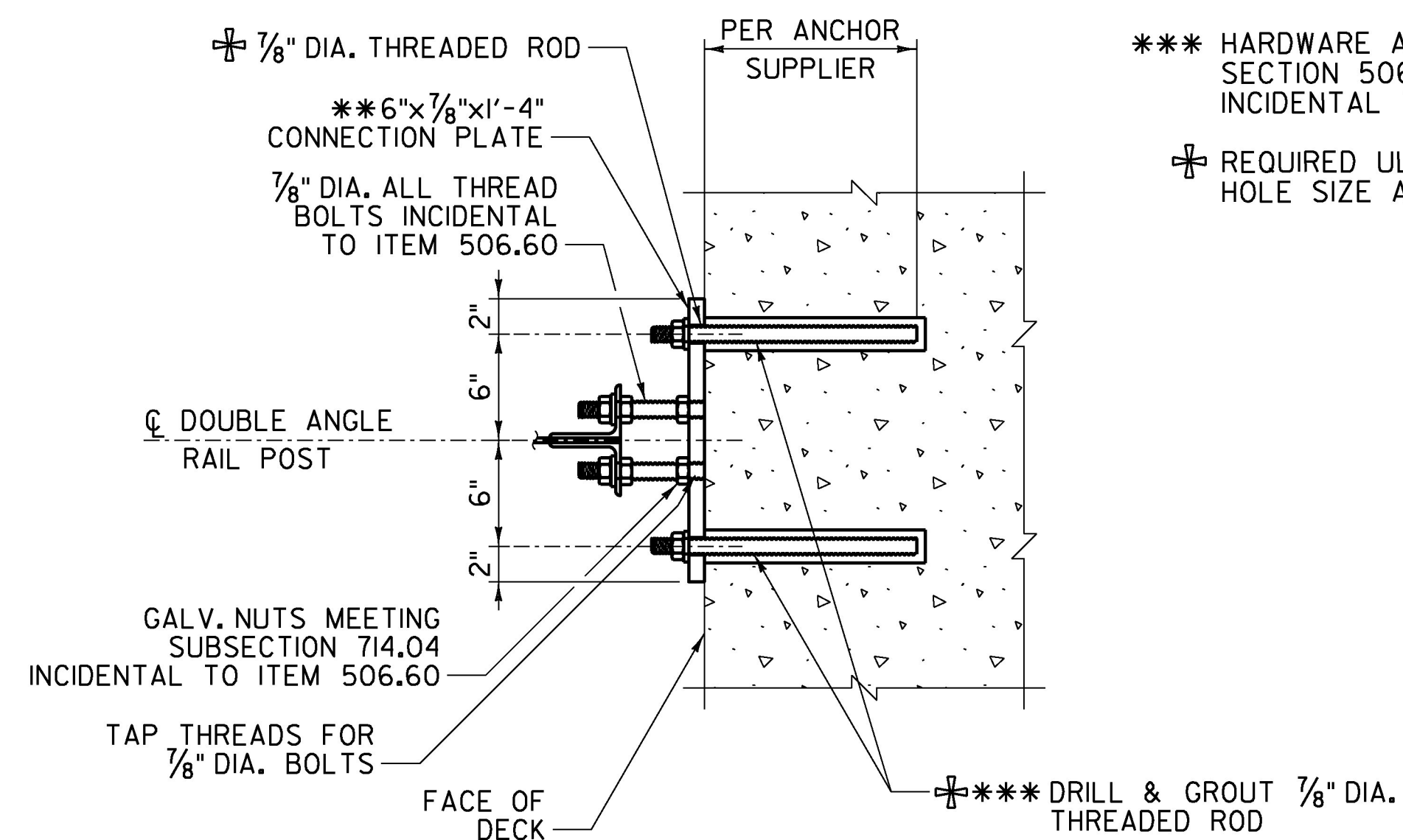
TYPICAL RAIL SECTION
SCALE: 1" = 1'-0"



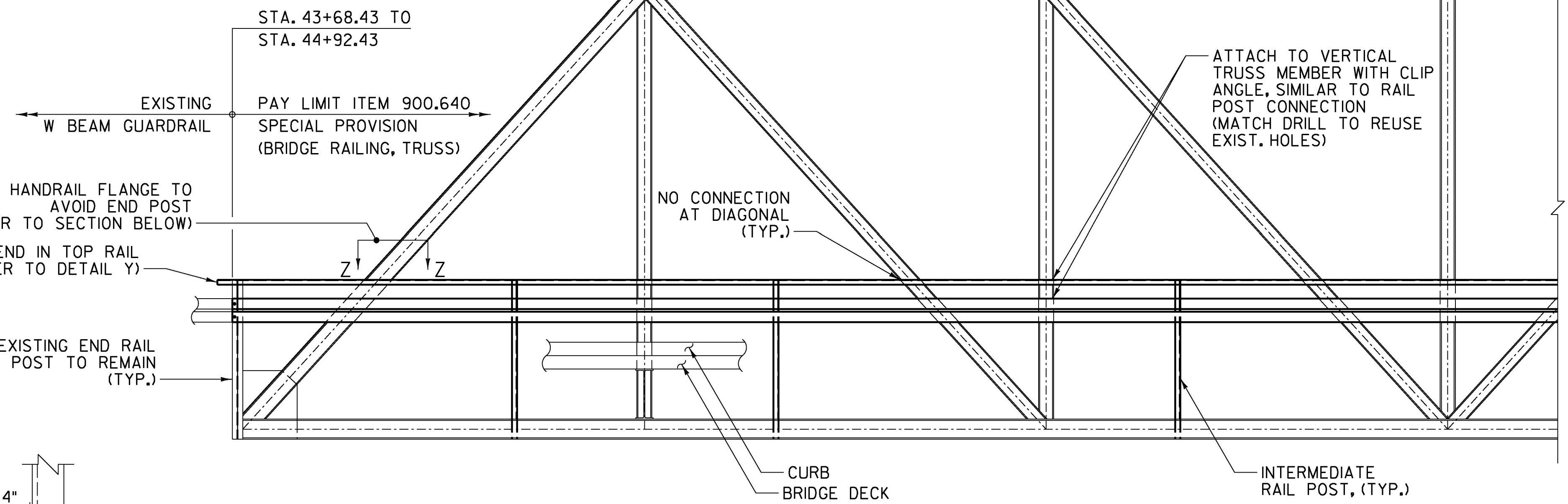
SECTION W-W
SCALE: 1 1/2" = 1'-0"

NOTES:

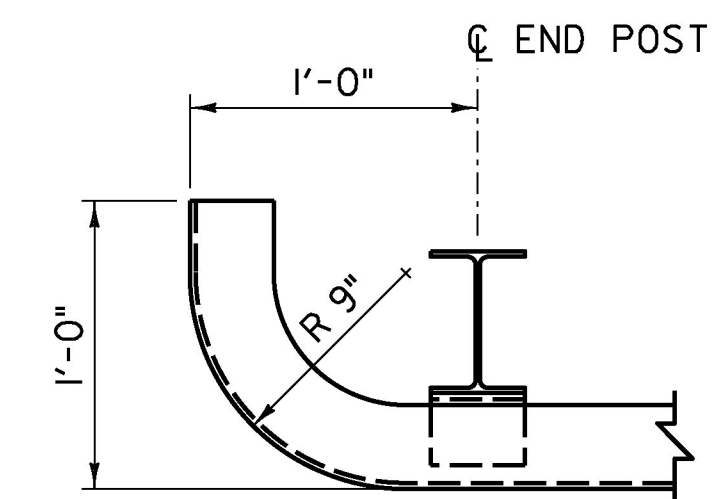
- * HAND RAIL, OFFSET BLOCKS, CLIP ANGLE, SPLICES AND ASSOCIATED HARDWARE SHALL BE FURNISHED AND INSTALLED. PAYMENT WILL BE CONSIDERED INCIDENTAL TO ITEM 900.640 SPECIAL PROVISION (BRIDGE RAILING, TRUSS).
- ** REPLACEMENT OF BRIDGE RAIL POSTS WILL BE PAID UNDER ITEM 506.60.
- *** HARDWARE AND ANCHOR SHALL BE IN ACCORDANCE WITH SECTION 506 AND SUBSECTION 714.07, PAYMENT WILL BE INCIDENTAL TO ITEM 507.16.
- ⊕ REQUIRED ULTIMATE BOND STRENGTH OF 54 KIPS PER ANCHOR; HOLE SIZE AND EMBEDMENT PER ANCHOR SUPPLIER.



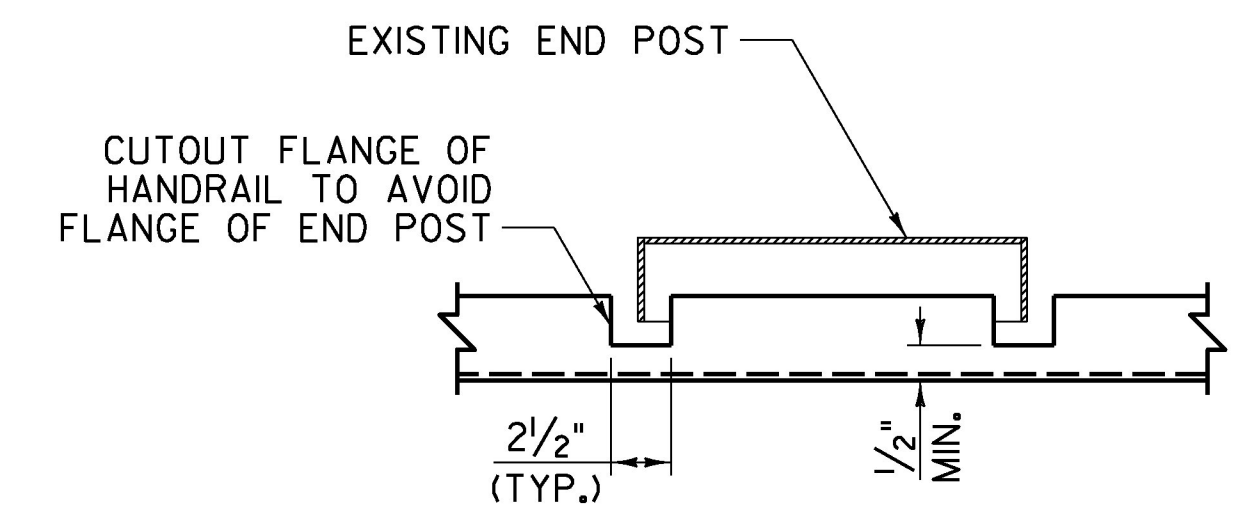
SECTION X-X
SCALE: 1 1/2" = 1'-0"



ELEVATION
SCALE: 1/4" = 1'-0"



DETAIL Y
*90° BEND IN TOP RAIL AT END POST
SCALE: 1 1/2" = 1'-0"



SECTION Z-Z
HANDRAIL FLANGE CUTOUT
SCALE: 1 1/2" = 1'-0"

PROJECT NAME: MORRISTOWN
PROJECT NUMBER: BF 0239(3)

FILE NAME: z13j274typ.dgn
PROJECT LEADER: T. KNIGHT
DESIGNED BY: T. KNIGHT
BRIDGE RAIL DETAILS

PLOT DATE: 3/9/2016
DRAWN BY: J. SOTER
CHECKED BY: G. BOGUE
SHEET 6 OF 9

