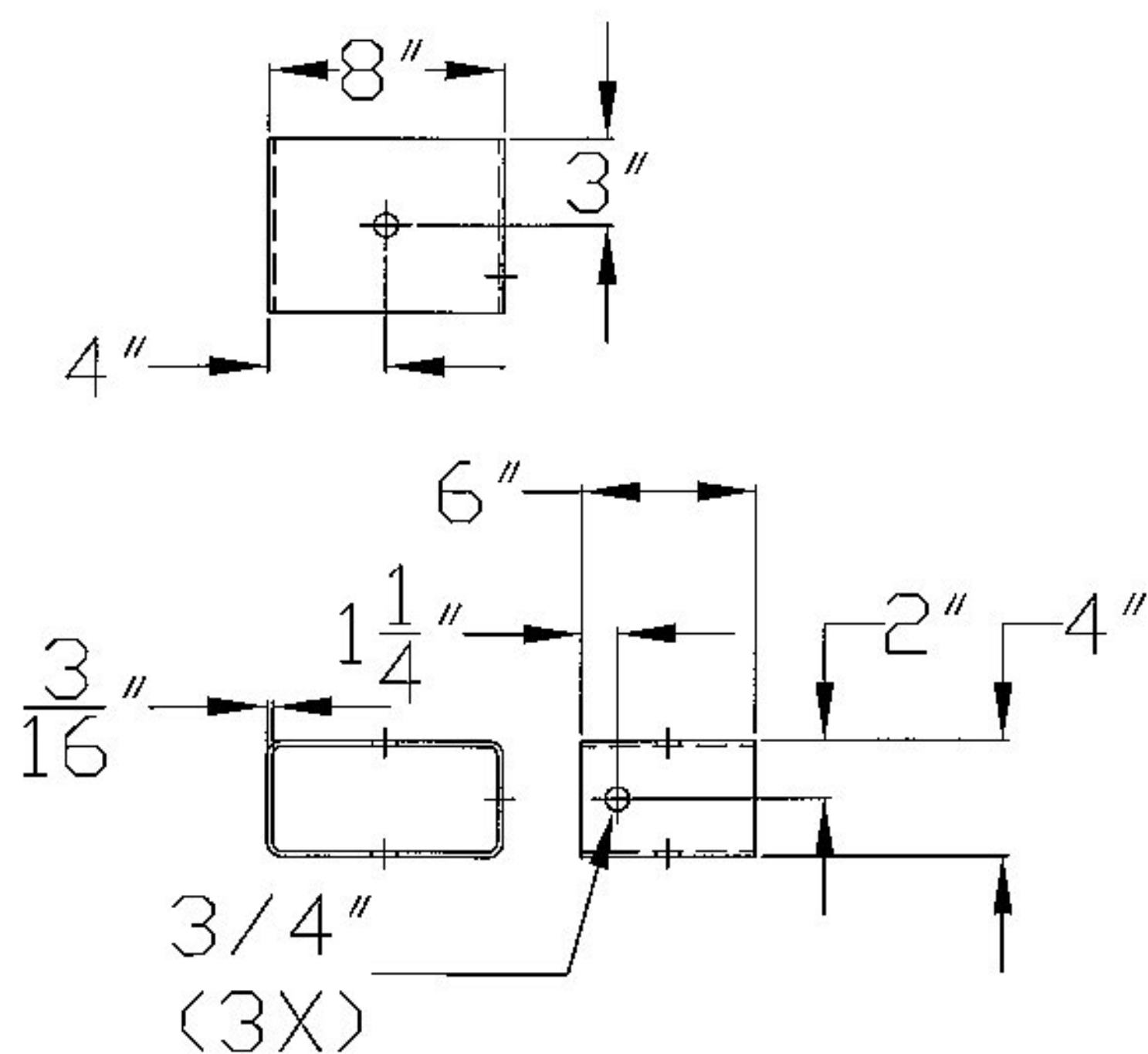
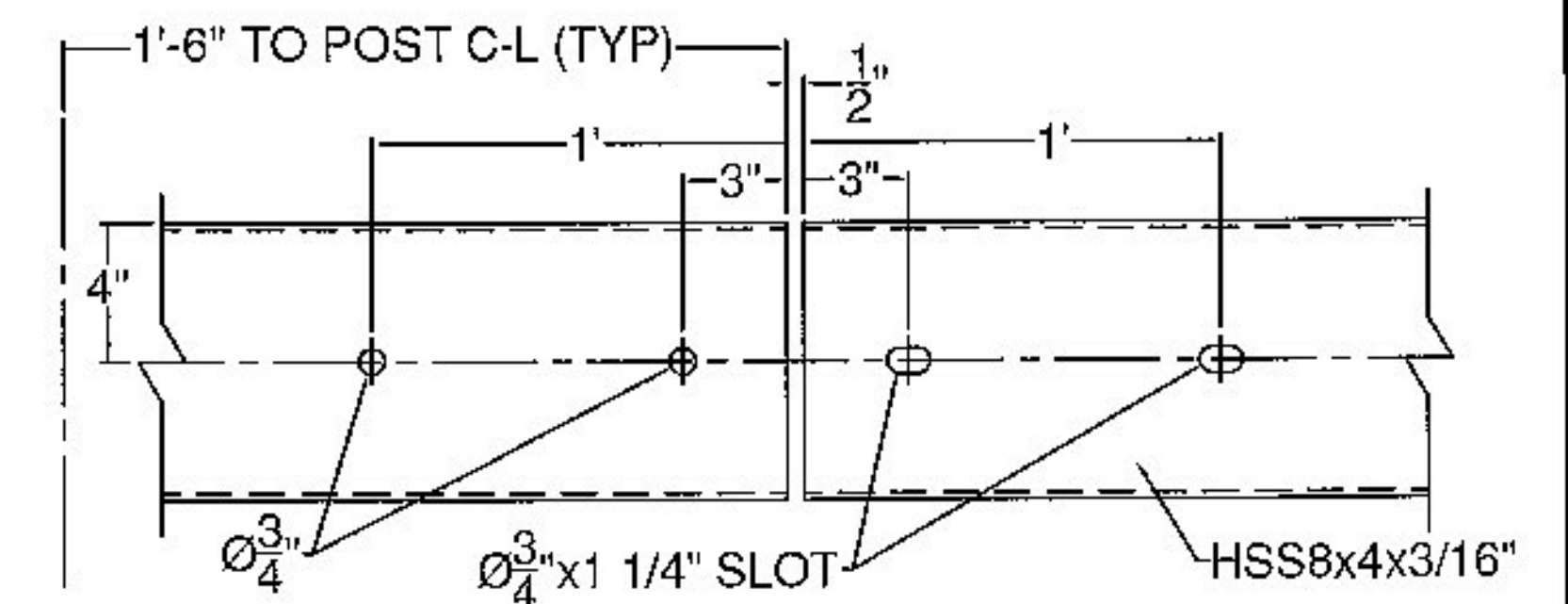
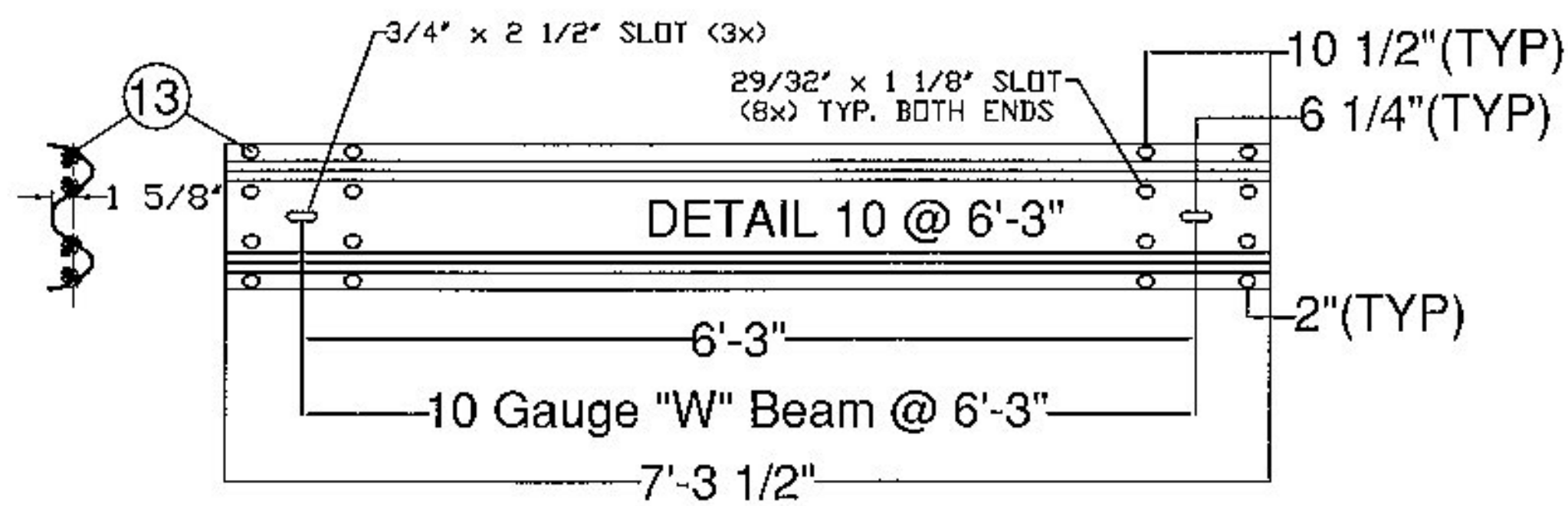
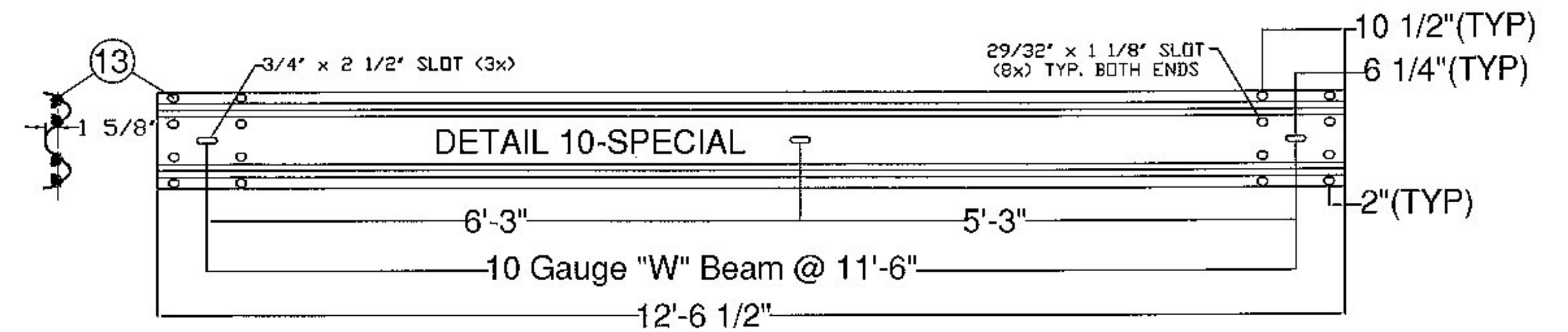
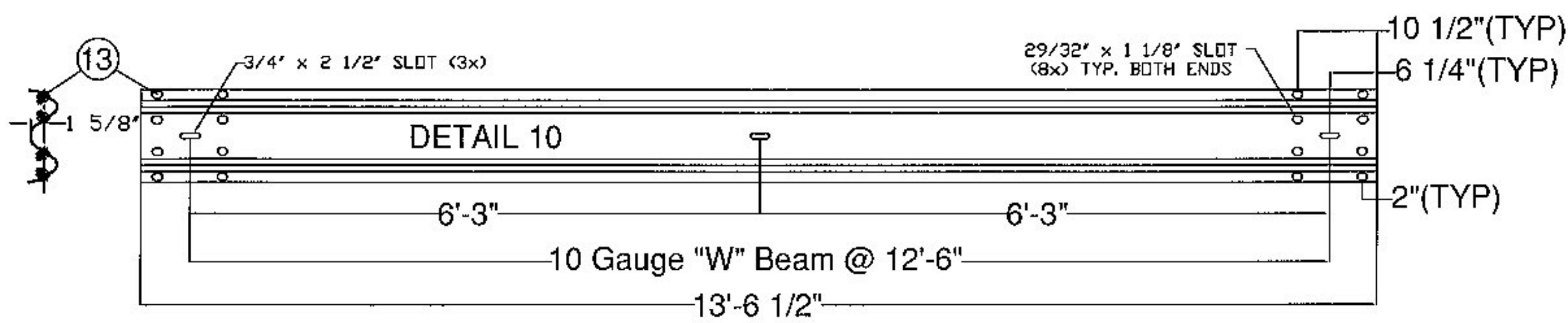
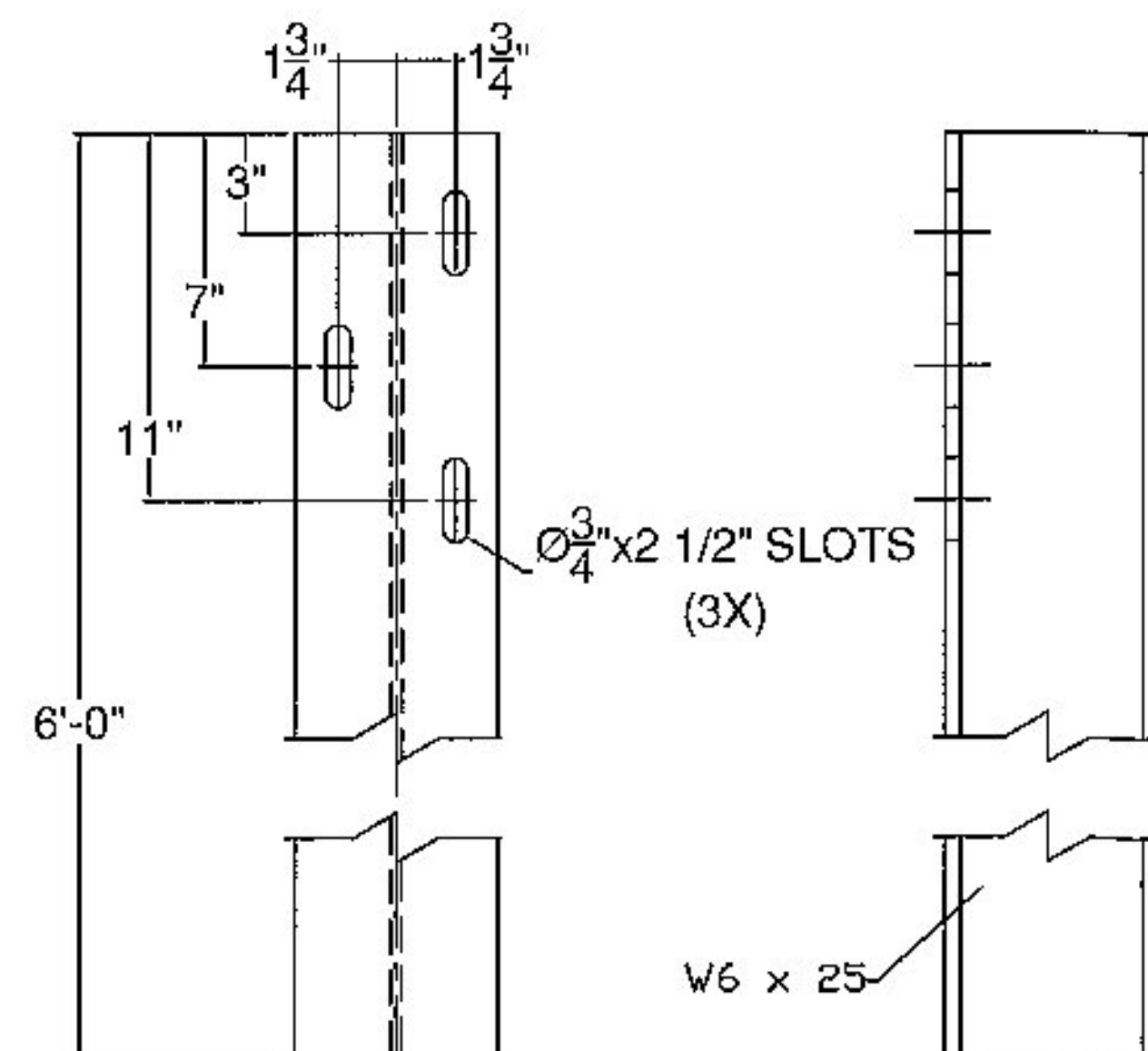


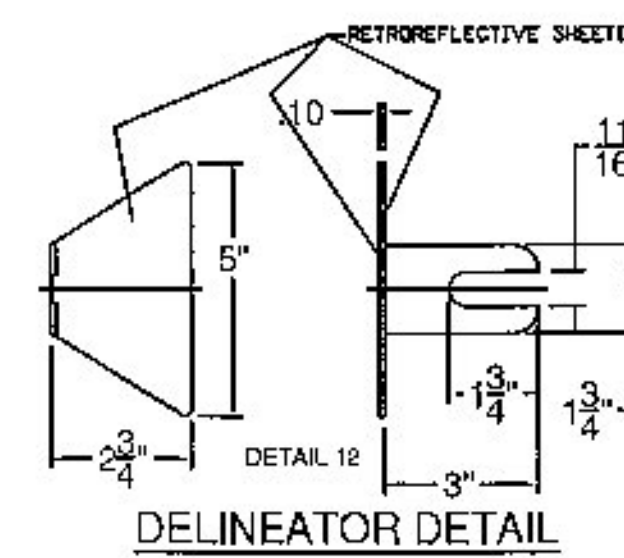
EAST RAILING, FACING EAST



BLOCK OUT (DETAIL #3)



DETAIL #11



Vermont Agency of Transportation  
**RECEIVED**  
 CK'D BY SMC/RSF OK'D BY WDL  
 February 17, 2016  
 RESUBMIT No Approved  
 BY RSY DATE 02/23/2016

ITEM #: 525.44

STRUCTURAL STEEL TO COMPLY W/ ASTM A6

GALVANIZING TO BE PER ASTM A123, UNLESS OTHERWISE SPECIFIED.

TOLERANCE UNLESS OTHERWISE NOTED:  
 HOLES - ± 1/32"  
 FRACTIONS - ± 1/16"  
 ANGLES - ± 1/2"

SHEET 2 OF 2

**BRIDGE RAIL DETAILS SHEET**

ROUTE # TH-4, RURAL MINOR COLLECTOR, CLASS 2, BRIDGE 4 OVER WHITNEY BROOK  
 TOWN OF CRAFTSBURY, COUNTY OF ORLEANS, VERMONT

R NO.	DATE	DESCRIPTION	BY	R NO.	DATE	DESCRIPTION	BY
E 1	2/17/16	REVISED PER 2/11/16 EMAIL	E.P.				

DRAWN	E.P.	1/13/16
CHECKED	D.L.	1/14/16
APPROVED		
SCALE	SCHEMATIC	

ELDERLEE, INC.  
 OAKS CORNERS, NEW YORK 14518  
 email: alang@elderlee.com / epeet@elderlee.com  
 Tel: 315-789-6670 Fax: 315-789-6615