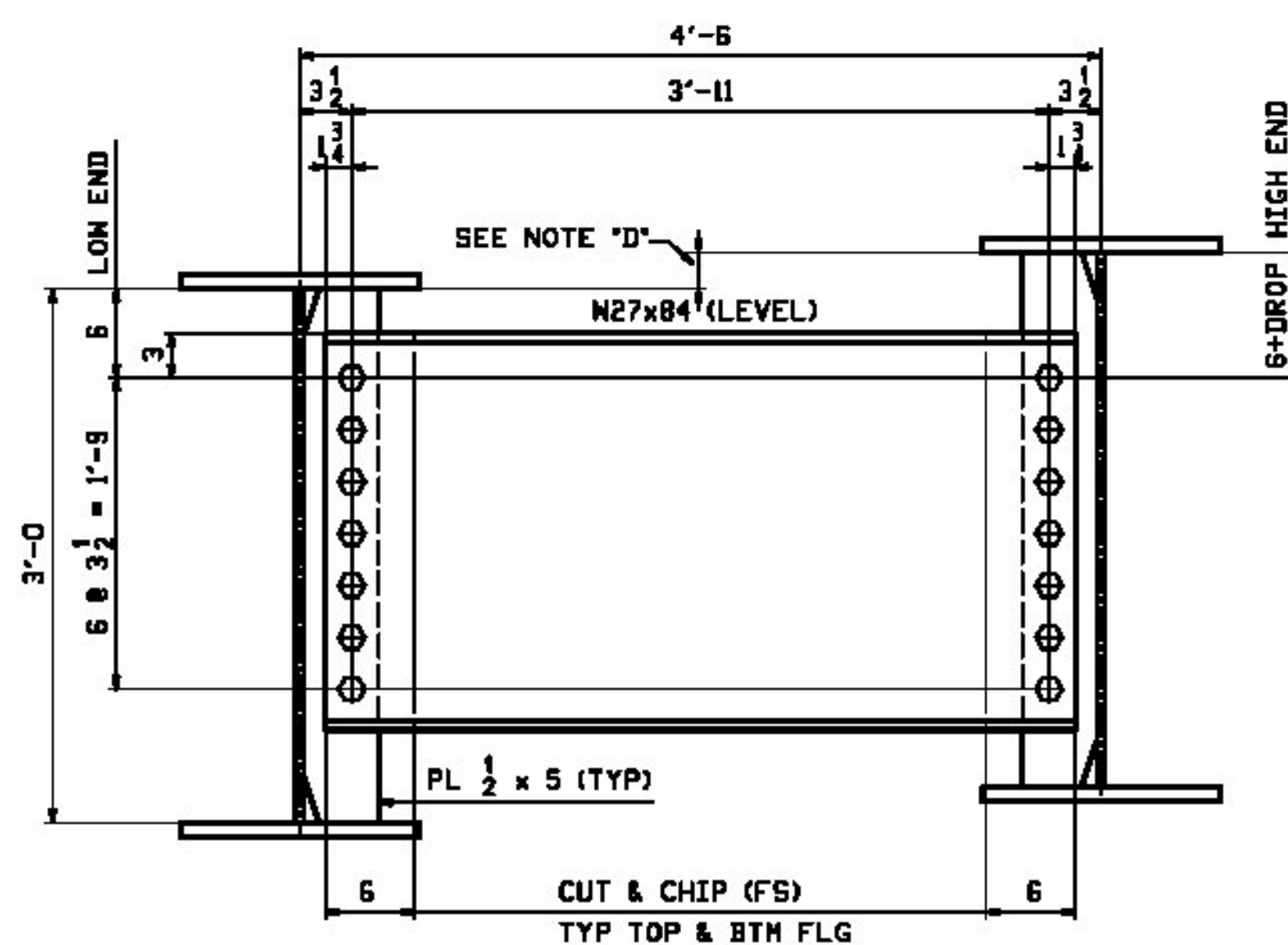


CALCULATION PLAN

Line	LEN A	GRADES	
		ABUT 1	ABUT 2
1	85'-1 1/8"	0.0581	0.0581
2	85'-1 1/8"	0.0587	0.0587
3	85'-1 1/8"	0.0581	0.0581
4	85'-1 1/8"	0.0587	0.0587
5	85'-1 1/8"	0.0601	0.0601
6	85'-1 1/8"	0.0607	0.0607

**** NOTE ****
 THE PURPOSE OF THIS DRAWING IS TO COORDINATE GEOMETRIC CONTROL INFORMATION. THIS DWG IS SUBMITTED FOR INFORMATION ONLY AND IS NOT INTENDED FOR SHOP FABRICATION.

- CALCULATION PLAN NOTES:**
1. LONGITUDINAL DIMENSIONS ARE SLOPING ALONG BTM OF GIRDERS WITH CORRECTIONS MADE FOR DL CAMBER, V.C. & GRADE (UN).
 2. TRANSVERSE DIMENSIONS ARE IN A HORIZONTAL PLANE (UN).
 3. ARROW POINTS TOWARD LOW END OF MEMBER.
 4. ENDS OF GIRDERS & BRGS STIFF'S ARE VERTICAL AFTER DL ROTATION.
 5. DIAPHRAGM STIFFENERS ARE NORMAL TO GRADE.
 6. BOTTOM POINT NUMBERS = TOP POINT NUMBERS + 500.
 7. COMBINE DIAPHRAGMS FOR DIFFERENCE IN DROPS OF +/- 1/8".
 8. FOR LAYOUTS SEE "TD" DRAWING.



TYP. INT. DIAPHRAGMS
 (LOOKING UP-STATION)
 15 REQ'D

- NOTES:**
1. DIAPHRAGMS & CONN. PLATES SHALL BE ASTM A709 GRADE 50W.
 2. ALL BOLT HOLES SHALL BE 1/16" FOR 7/8" HSB.

NOTE 'D'
 DROP VARIES IN MAGNITUDE.

Vermont Agency of Transportation
RECEIVED

CK'D BY RSF/SMC OK'D BY WDL

May 19, 2016

RESUBMIT No Approved AsNoted
 BY RSY DATE 05/26/2016

REV.	DATE	REMARKS	DWN	CHK	APVL	SHOP
MATERIAL:		SURFACE PREP. & PAINT:		HOLES:		SHOP BOLTS:
M270-SOWT2		SEE DWG GNI		1 1/2" ϕ		7/8" ϕ HSB
DESCRIPTION: CALCULATION PLAN & LAYOUTS						
CASCO BAY STEEL STRUCTURES, INC. 1 WALLACE AVE. PHONE (207) 780-6722 SOUTH PORTLAND, ME 04106 FAX (207) 780-6726			STRUCTURE: TH-4 OVER WHITNEY BROOK ROUTE NO: TH-4, RURAL MINOR COLLECTOR BRIDGE REPLACEMENT COUNTY OF ORLEANS		DATE: 02/25 CHKD: JTB DATE: 03/02 DRAWN: LWD	
LOCATION: TOWN OF CRAFTSBURY, VERMONT			JOB NO.:		DWG NO.:	
PROJ NO.: BD 1449(34)			JOB NO.:		DWG NO.:	
CUSTOMER: CCS CONSTRUCTORS INC.			JOB NO.:		DWG NO.:	