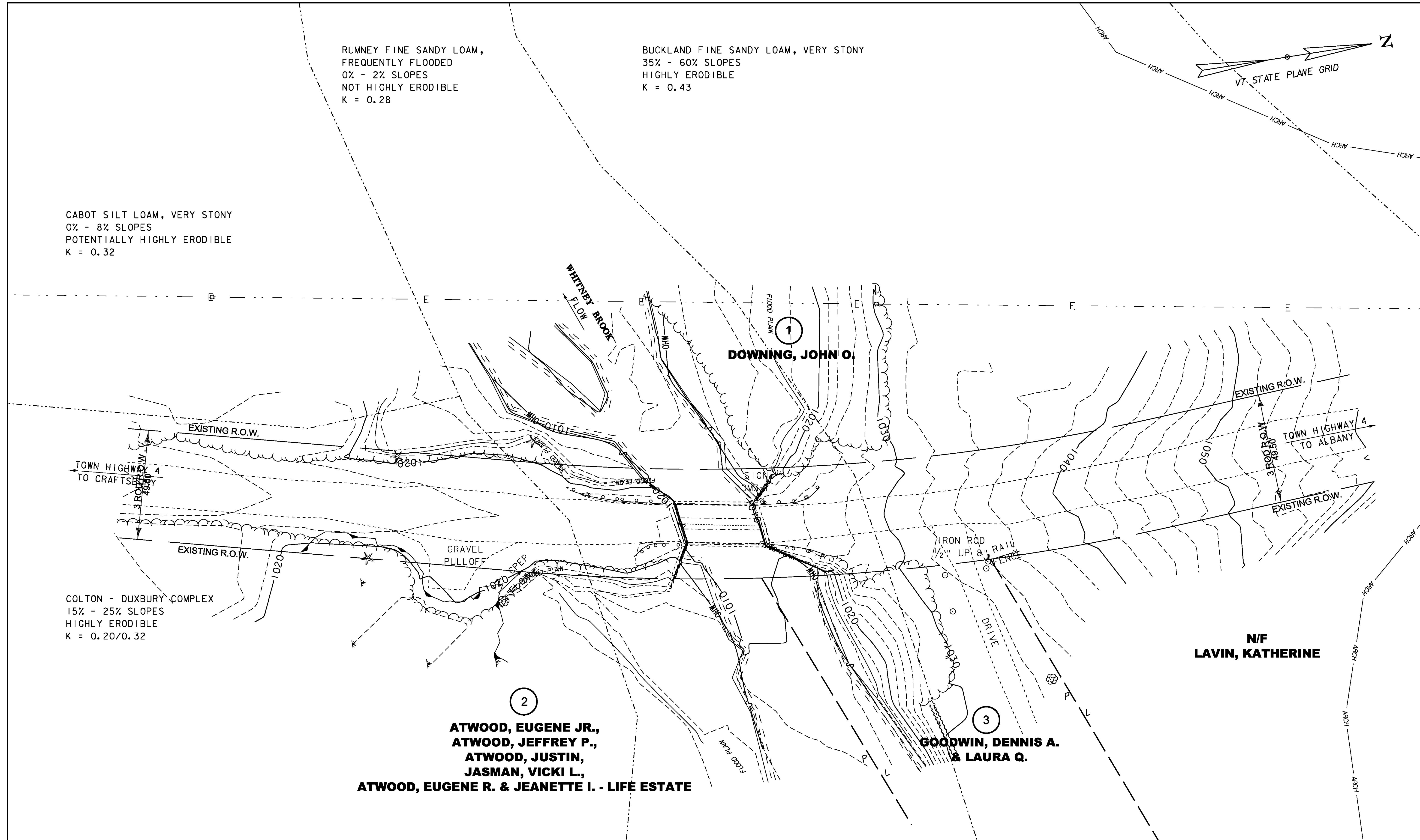
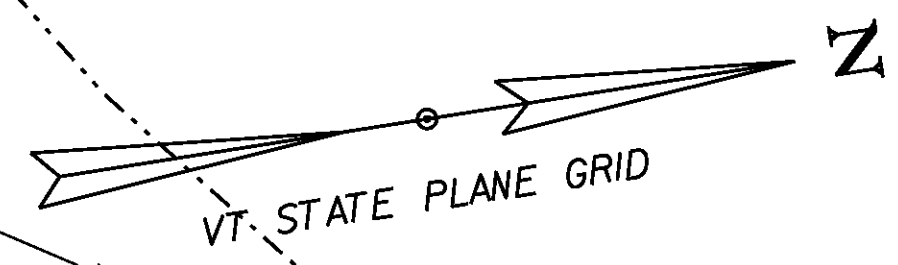


RUMNEY FINE SANDY LOAM,
 FREQUENTLY FLOODED
 0% - 2% SLOPES
 NOT HIGHLY ERODIBLE
 K = 0.28

BUCKLAND FINE SANDY LOAM, VERY STONY
 35% - 60% SLOPES
 HIGHLY ERODIBLE
 K = 0.43

CABOT SILT LOAM, VERY STONY
 0% - 8% SLOPES
 POTENTIALLY HIGHLY ERODIBLE
 K = 0.32

COLTON - DUXBURY COMPLEX
 15% - 25% SLOPES
 HIGHLY ERODIBLE
 K = 0.20/0.32



DOWNING, JOHN O.

**ATWOOD, EUGENE JR.,
 ATWOOD, JEFFREY P.,
 ATWOOD, JUSTIN,
 JASMAN, VICKI L.,
 ATWOOD, EUGENE R. & JEANETTE I. - LIFE ESTATE**

**GOODWIN, DENNIS A.
 & LAURA Q.**

**N/F
 LAVIN, KATHERINE**

EXISTING BRIDGE DATA
 SINGLE SPAN ROLLED BEAM
 BUILT 1929
 41' SPAN, 17.7' CURB - CURB

EPSC EXISTING CONDITIONS

SCALE 1" = 20' - 0"
 20 0 20

PROJECT NAME: CRAFTSBURY	PLOT DATE: 14-OCT-2015
PROJECT NUMBER: BO 1449(34)	DRAWN BY: S. COLEY
FILE NAME: s13j100ero_border.dgn	CHECKED BY: W. LAMMER
DESIGNED BY: S. COLEY	SHEET 37 OF 42
EPSC EXISTING CONDITIONS	