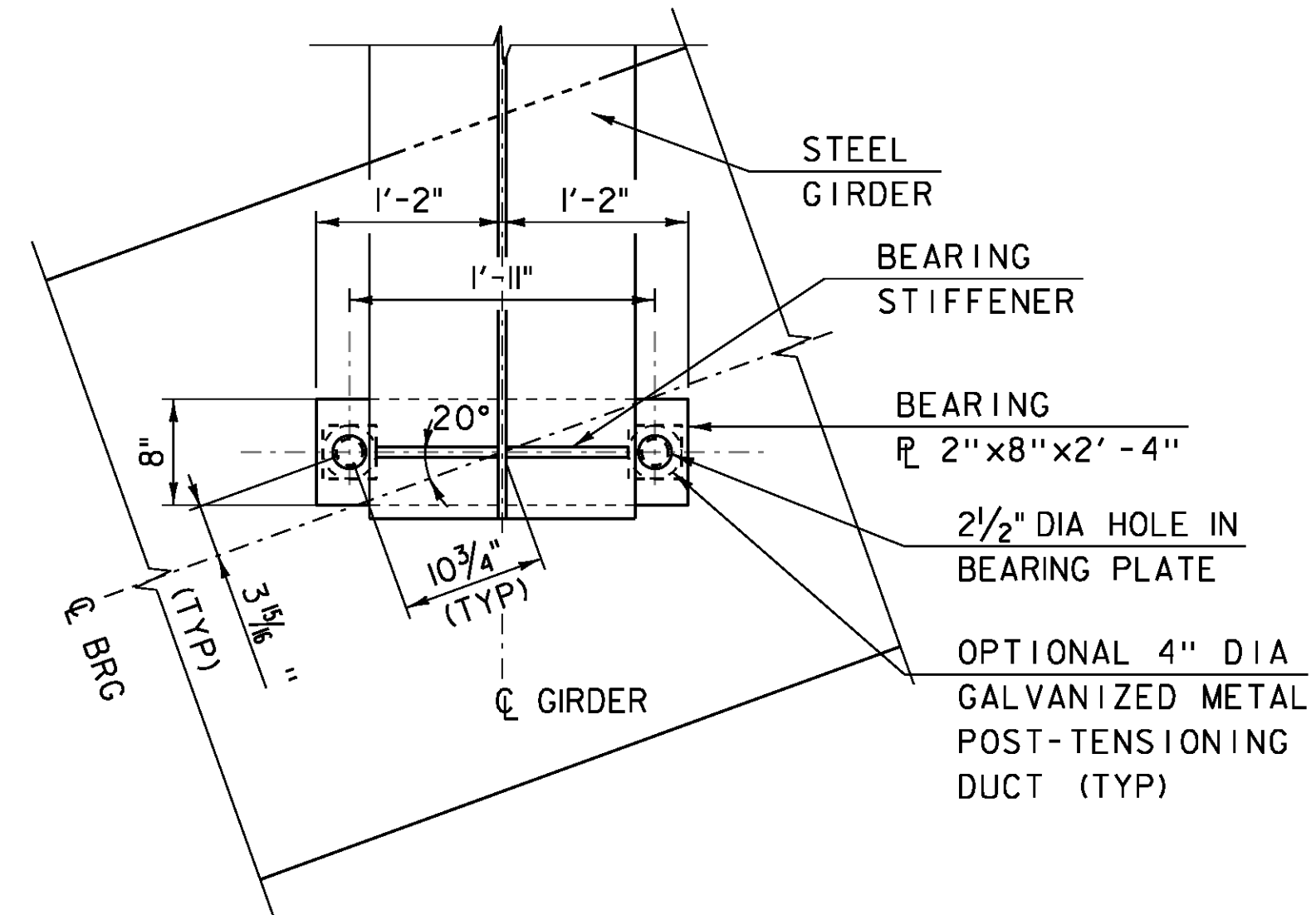


DEAD LOAD DEFLECTION DIAGRAM

NOT TO SCALE
SEE TABLES BELOW

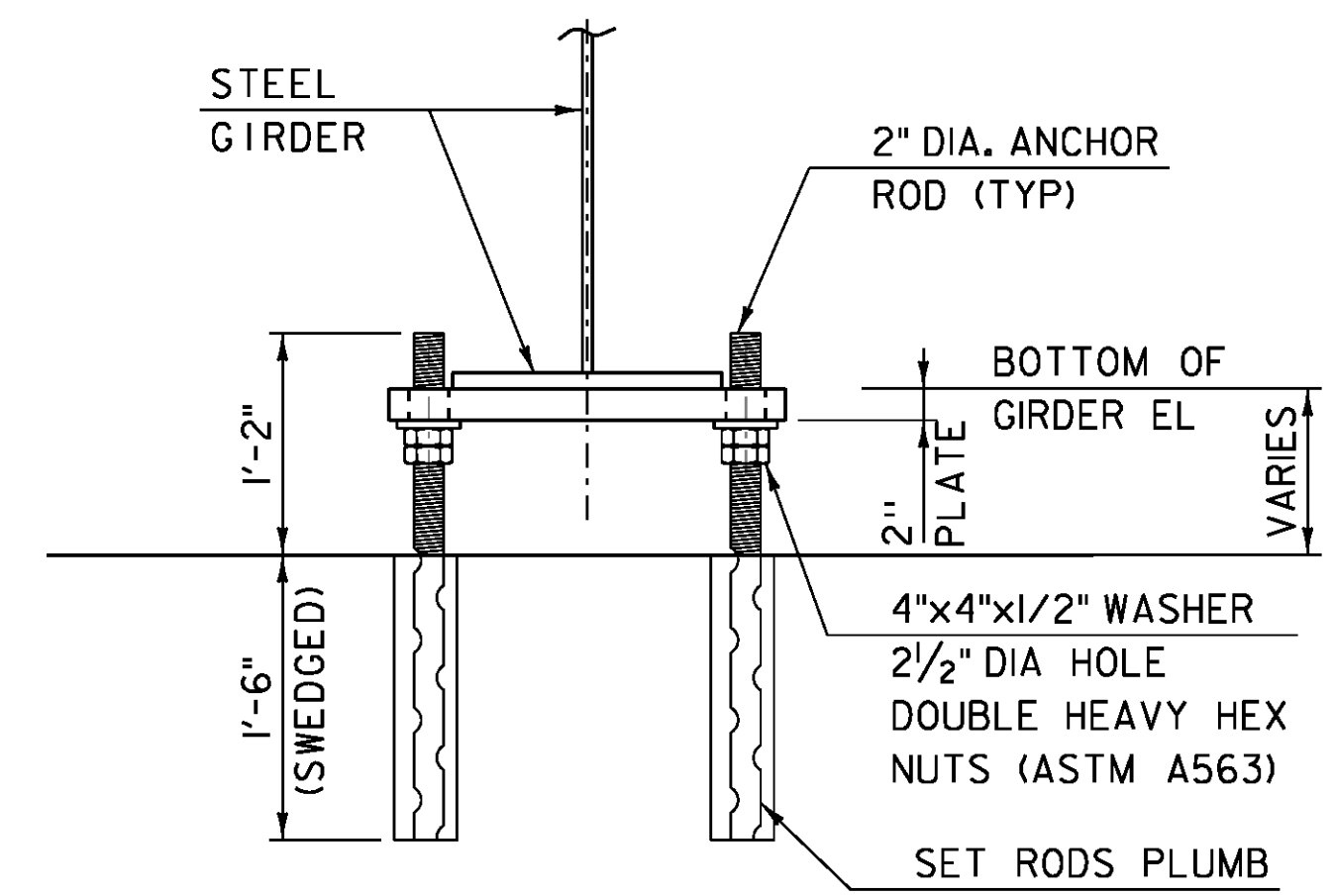
GIRDER 1, 6	.1L	.2L	.3L	.4L	.5L	.6L	.7L	.8L	.9L
STEEL DEFLECTION	3/16"	3/8"	1/2"	9/16"	5/8"	9/16"	1/2"	3/8"	3/16"
SLAB & SUPER DEFLECTION	1"	1 1/8"	2 5/8"	3 1/16"	3 3/16"	3 1/16"	2 5/8"	1 7/8"	1"
TOTAL DEFLECTION	1 3/16"	2 1/4"	3 3/8"	3 5/8"	3 1/16"	3 5/8"	3 1/8"	2 1/4"	1 3/16"
RESIDUAL CAMBER	0"	0"	0"	0"	0"	0"	0"	0"	0"
TOTAL CAMBER	1 3/16"	2 1/4"	3 3/8"	3 5/8"	3 1/16"	3 5/8"	3 1/8"	2 1/4"	1 3/16"

GIRDERS 2, 3, 4, & 5	.1L	.2L	.3L	.4L	.5L	.6L	.7L	.8L	.9L
STEEL DEFLECTION	3/16"	3/8"	1/2"	9/16"	5/8"	9/16"	1/2"	3/8"	3/16"
SLAB & SUPER DEFLECTION	5/8"	1 3/16"	1 5/8"	1 15/16"	2"	1 15/16"	1 5/8"	1 3/16"	5/8"
TOTAL DEFLECTION	11/16"	1 9/16"	2 1/8"	2 1/2"	2 5/8"	2 1/2"	2 1/8"	1 9/16"	11/16"
RESIDUAL CAMBER	0"	0"	0"	0"	0"	0"	0"	0"	0"
TOTAL CAMBER	11/16"	1 9/16"	2 1/8"	2 1/2"	2 5/8"	2 1/2"	2 1/8"	1 9/16"	11/16"



TEMPORARY BEARING ASSEMBLY PLAN

SCALE: 1" = 1'-0"



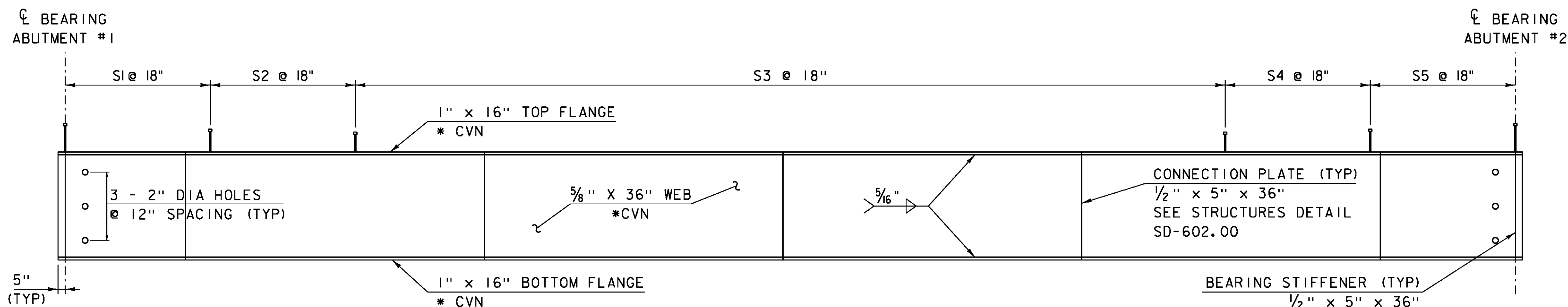
TEMPORARY BEARING ASSEMBLY ELEVATION

SCALE: 1" = 1'-0"

TEMPORARY BEARING NOTES

1. PAYMENT FOR TEMPORARY BEARING ASSEMBLIES WILL BE CONSIDERED INCIDENTAL TO THE APPROPRIATE PRECAST CONCRETE ABUTMENT ITEMS.
2. BEARING PLATES SHALL BE LEVEL PRIOR TO SETTING PREFABRICATED BRIDGE UNITS. ELEVATIONS SHALL BE ADJUSTED TO WITHIN 0.01FT OF ELEVATIONS NOTED DURING OFF-SITE FABRICATION OF THE UNITS.
3. BEARING PLATE STEEL SHALL CONFORM TO SUBSECTION 714.03. ANCHOR RODS SHALL MEET THE REQUIREMENTS OF SUBSECTION 714.08, AND SHALL BE GRADE 55.

BOTTOM OF GIRDER ELEVATIONS		
GIRDER	ABUTMENT #1	ABUTMENT #2
G1	1018.64	1023.58
G2	1018.90	1023.89
G3	1019.10	1024.12
G4	1019.36	1024.43
G5	1019.55	1024.66
G6	1019.81	1024.97



GIRDER ELEVATION

SCALE: HORIZ: 1/4" = 1'-0"
VERT: 1/2" = 1'-0"

WELDED SHEAR STUD CONNECTORS TABLE				
SHEAR STUD	SIZE	START	STOP	SHEAR STUD QUANTITY
S1	7/8" X 10"	0.0L	0.1L	6 PER ROW X 2 ROWS
S2	7/8" X 8"	0.1L	0.2L	6 PER ROW X 2 ROWS
S3	7/8" X 7"	0.2L	0.8L	34 PER ROW X 2 ROWS
S4	7/8" X 8"	0.8L	0.9L	6 PER ROW X 2 ROWS
S5	7/8" X 10"	0.9L	1.0L	6 PER ROW X 2 ROWS

* CVN DENOTES THAT CHARPY V-NOTCH TEST IS REQUIRED

PROJECT NAME:	CRAFTSBURY
PROJECT NUMBER:	BO 1449(34)
FILE NAME:	s13j100sup.dgn
PROJECT LEADER:	R. YOUNG
DESIGNED BY:	W. LAMMER
GIRDER AND BEARING DETAILS	
PLOT DATE:	14-OCT-2015
DRAWN BY:	S. COLEY
CHECKED BY:	J. GRIGAS
SHEET	19 OF 42